

13/9/19

BOILER ORDER N°4258 FOR MESSRS STEEL BROS & CO LD. FOR S. S. PERLAK

HEATING SURFACE

TUBES	575	Sq Feet
FURNACES	83	" "
C. CHAMBERS	87	" "
TUBE PLATES	30	" "
TOTAL	795	" "

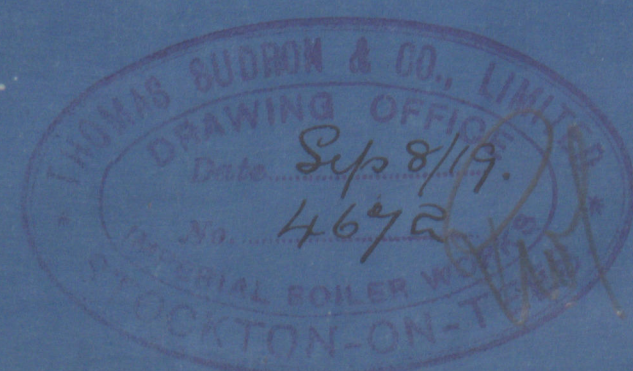
TOTAL GRATE AREA 26.5 Sq Feet
LENGTH OF FIREBARS 5'0"

WORKING PRESSURE 180 LBS. PER SQ INCH

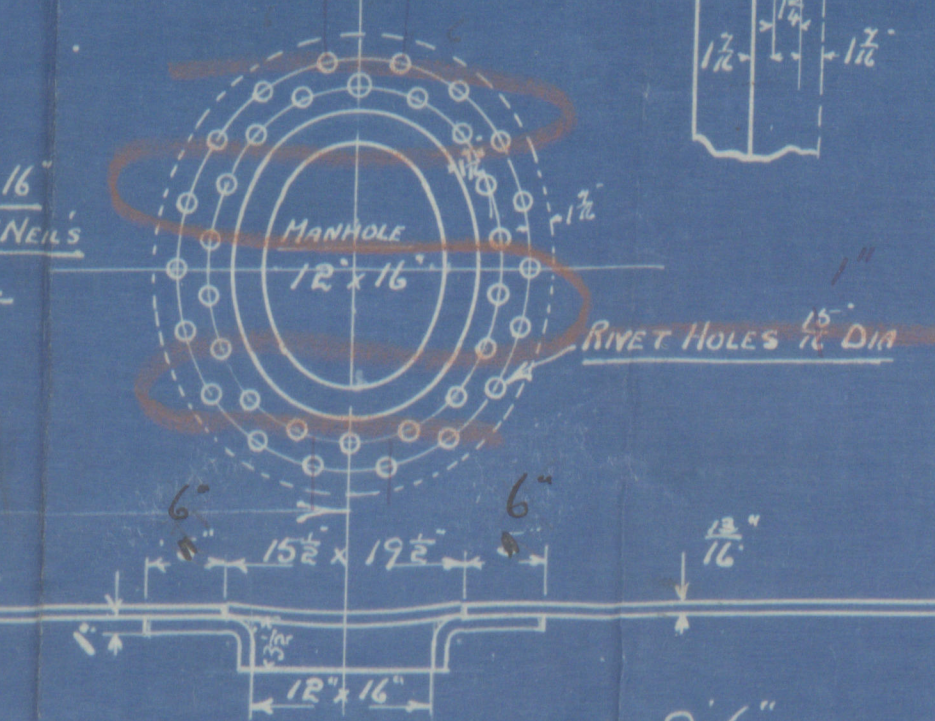
TEST 320 " " " "

TO BE CONSTRUCTED TO PASS LLOYDS SURVEY
AND BOARD OF TRADE SURVEY.

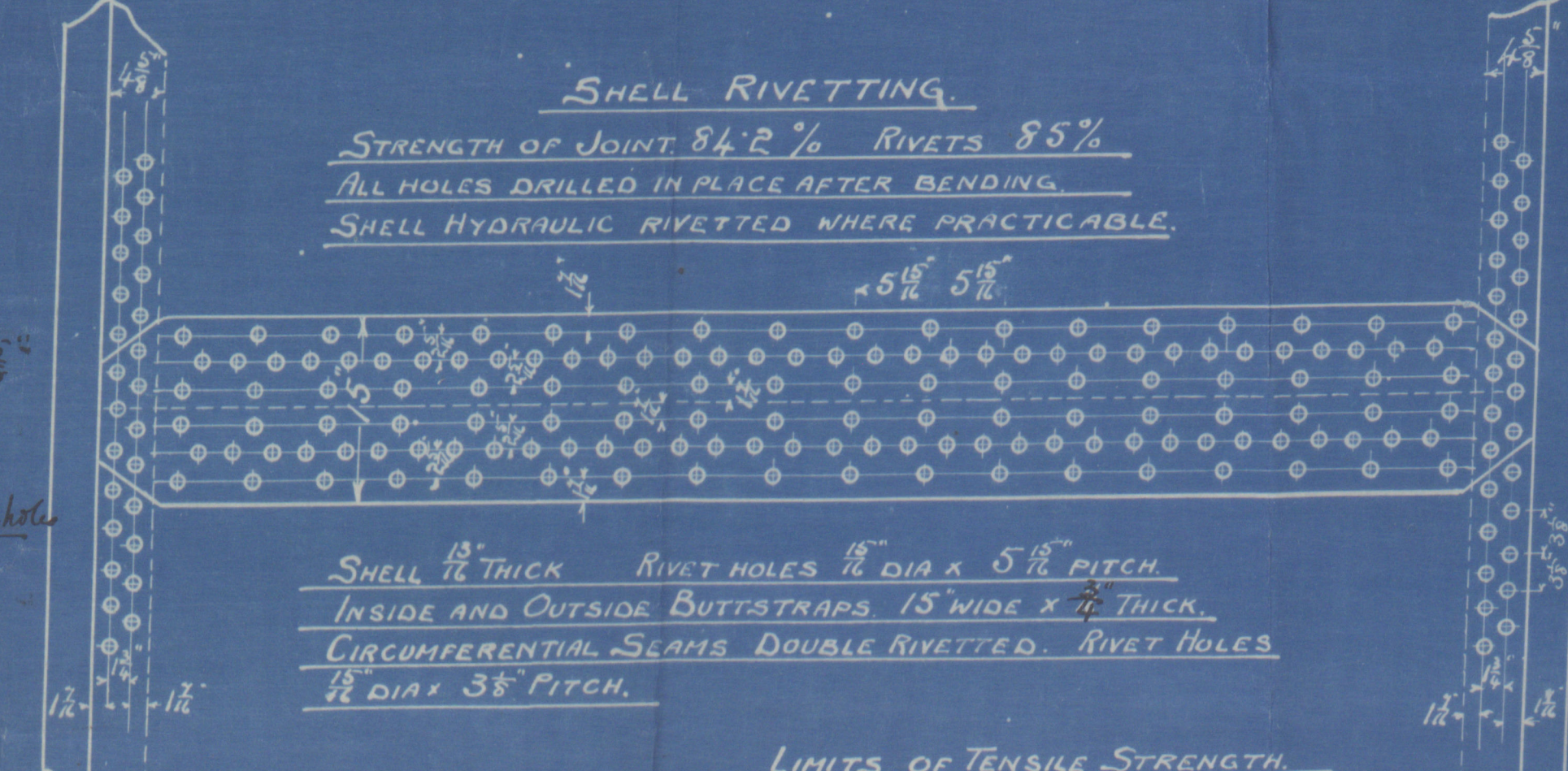
1 OFF SCALE 1 IN. = 1 FOOT. AUG 30/19.



MANHOLE 12" x 16"
FITTED WITH M'NEIL'S
GROOVED DOOR.



SHELL RIVETTING.
STRENGTH OF JOINT 84.2% RIVETS 85%
ALL HOLES DRILLED IN PLACE AFTER BENDING.
SHELL HYDRAULIC RIVETTED WHERE PRACTICABLE.



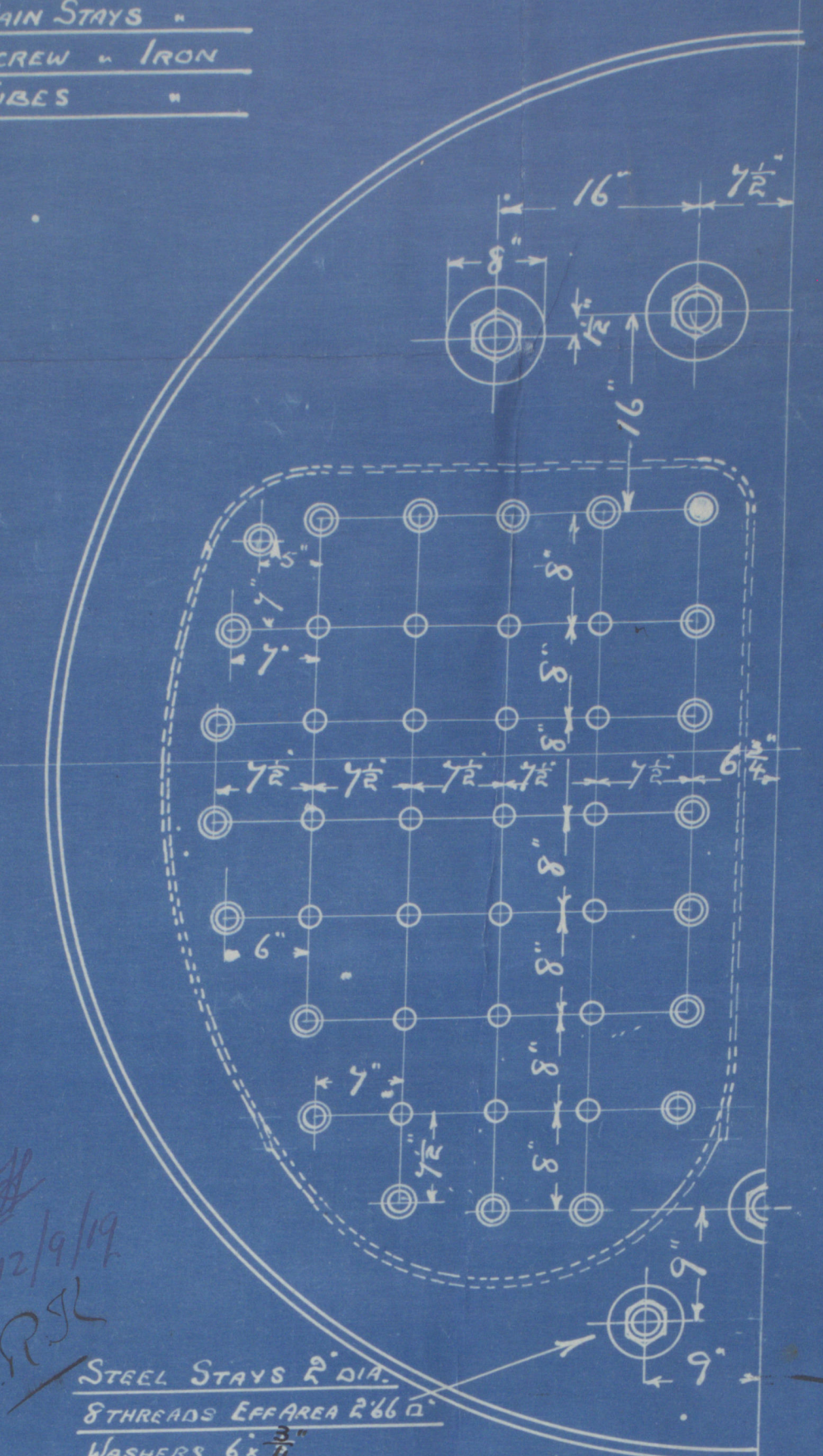
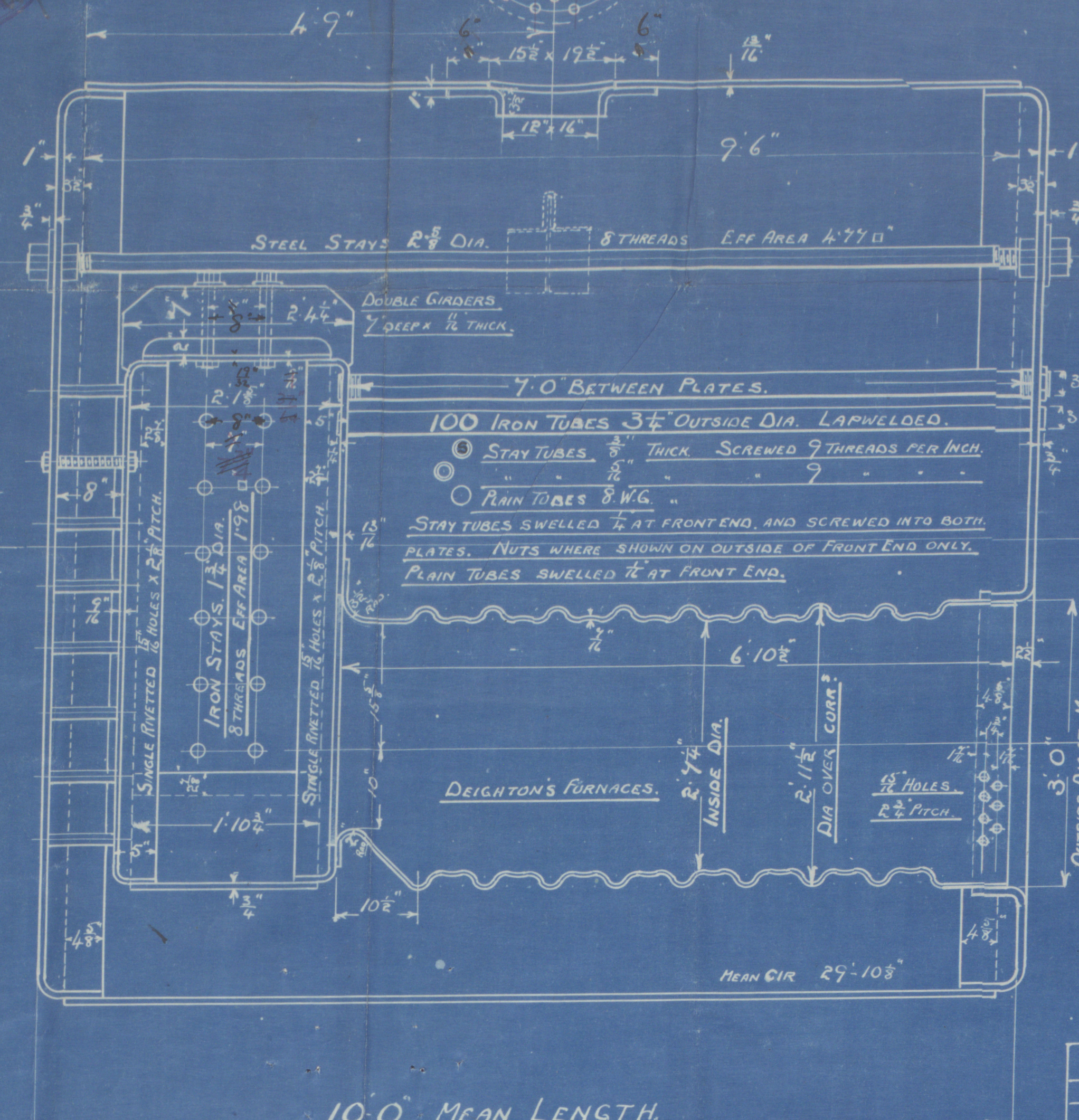
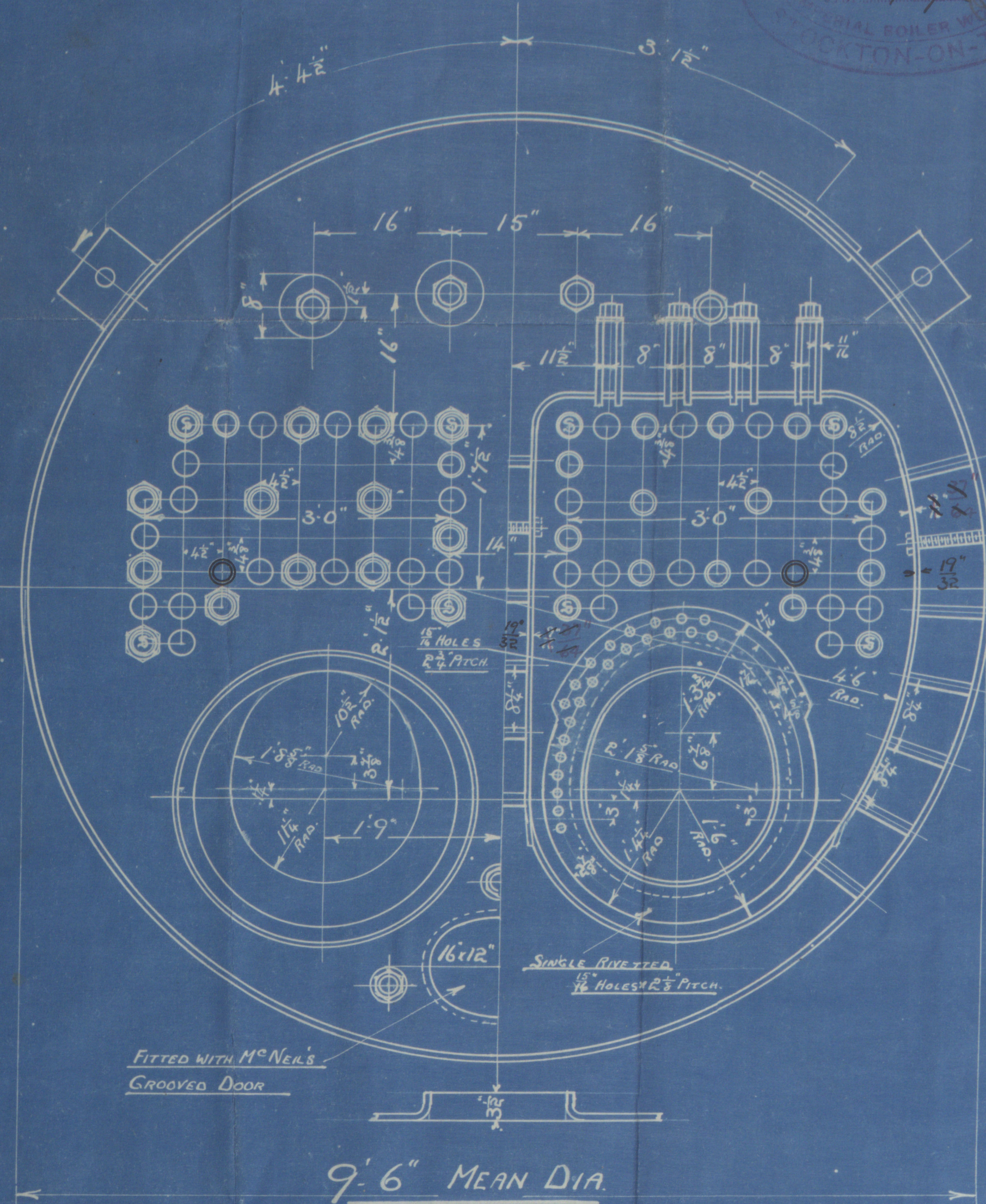
SHELL 1 1/2" THICK RIVET HOLES 1 1/2" DIA x 5 1/2" PITCH.
INSIDE AND OUTSIDE BUTTSTRAPS 15" WIDE x 1/2" THICK.
CIRCUMFERENTIAL SEAMS DOUBLE RIVETTED. RIVET HOLES 1 1/2" DIA x 3 1/2" PITCH.

LIMITS OF TENSILE STRENGTH

SHELL AND BUTTSTRAPS	29 TO 33 TONS
COMPENSATION PLATE	26 - 30 "
ALL OTHER PLATES	26 - 30 "
MAIN STAYS	28 - 32 "

Plates by Messrs John Spencer & Sons Ltd.

PLATES STEEL
RIVETS "
MAIN STAYS "
SCREW - IRON
TUBES "



	STEEL STAY	2" DIA	8 THREADS PER INCH	EFF AREA 2.66 sq
IRON	1 1/2"	8	"	2.31
	1 1/2"	8	"	1.98

ALL C. CHAMBER STAYS TO BE SCREWED INTO BOTH PLATES AND FITTED WITH A SINGLE NUT AT BOTH ENDS.

Missin Thos Sudron 7th Feb
Borde No 4258
for

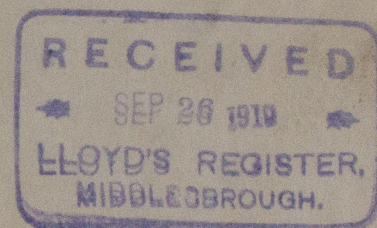
S.S. Perlak (of Rangorn)

Working Press 180 lbs.
Test Press 320 "

MIDDLESBRO'

No. 6136
LLOYD'S TEST
320
W.P. 180
16.6.20 - WM

10725



W625-0089



© 2021

Lloyd's Register
Foundation

WG25-0089 1/2

FOR ENCLOSURE TO

Messrs Lloyd's
Surveyors.

H.-1202.

From THOMAS SUDRON & Co., Limited,
Imperial Boiler Works, Stockton-on-Tees.