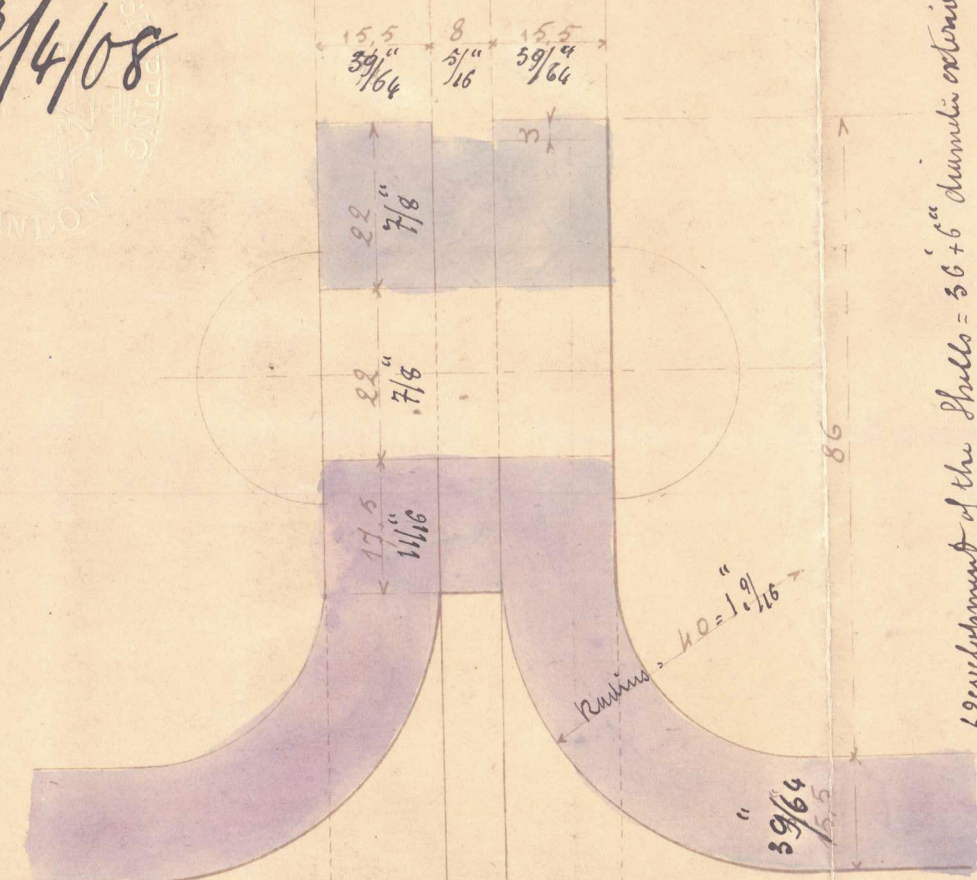
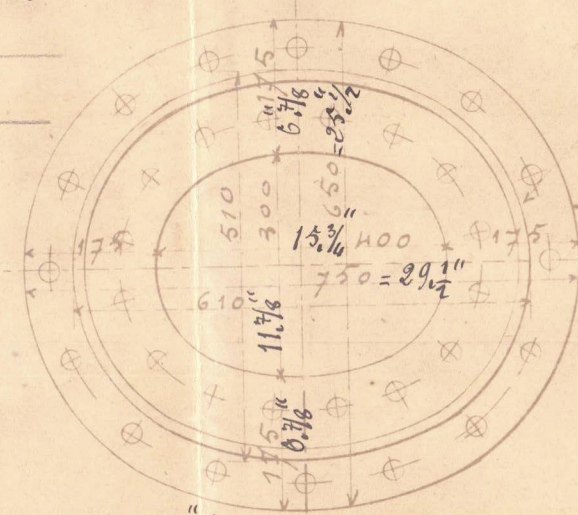


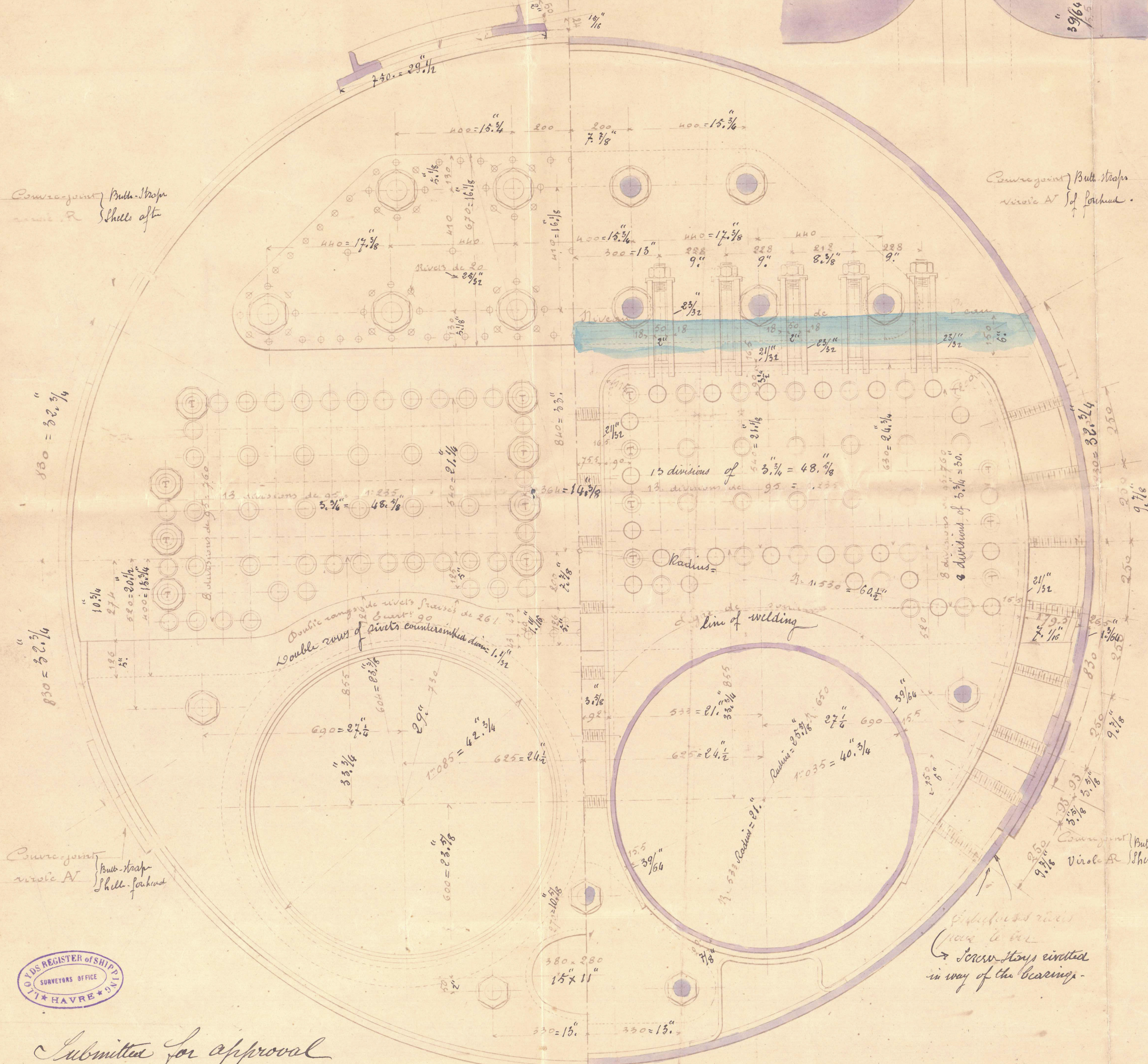
Plan of Main Boilers proposed to be built by M.  
Caillard & Co. at Havre, for a Cargo-Boat ordered to  
the "Ateliers & Chantiers de France" at Dunkirk by the  
"Compagnie Havraise Peninsulaire of Havre."

Other Main Boilers are to be built at

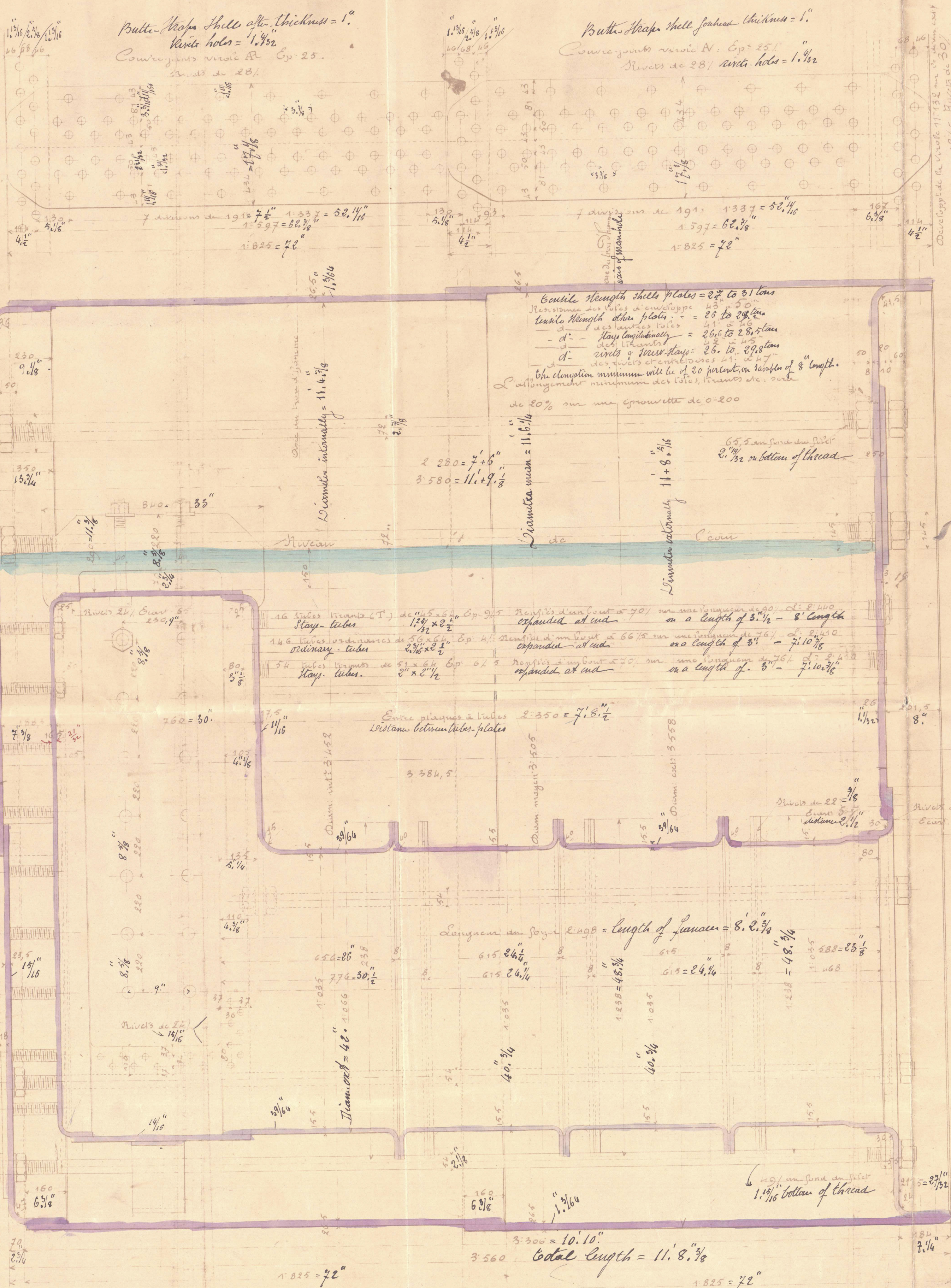
22/4/08



Development of the Shell = 56' 6" diameter external  
Development of the shell = 56' 6" diameter external  
Development of the shell = 56' 6" diameter external



Submitted for approval  
Havre the 10<sup>th</sup> April 1908  
A. Cartier

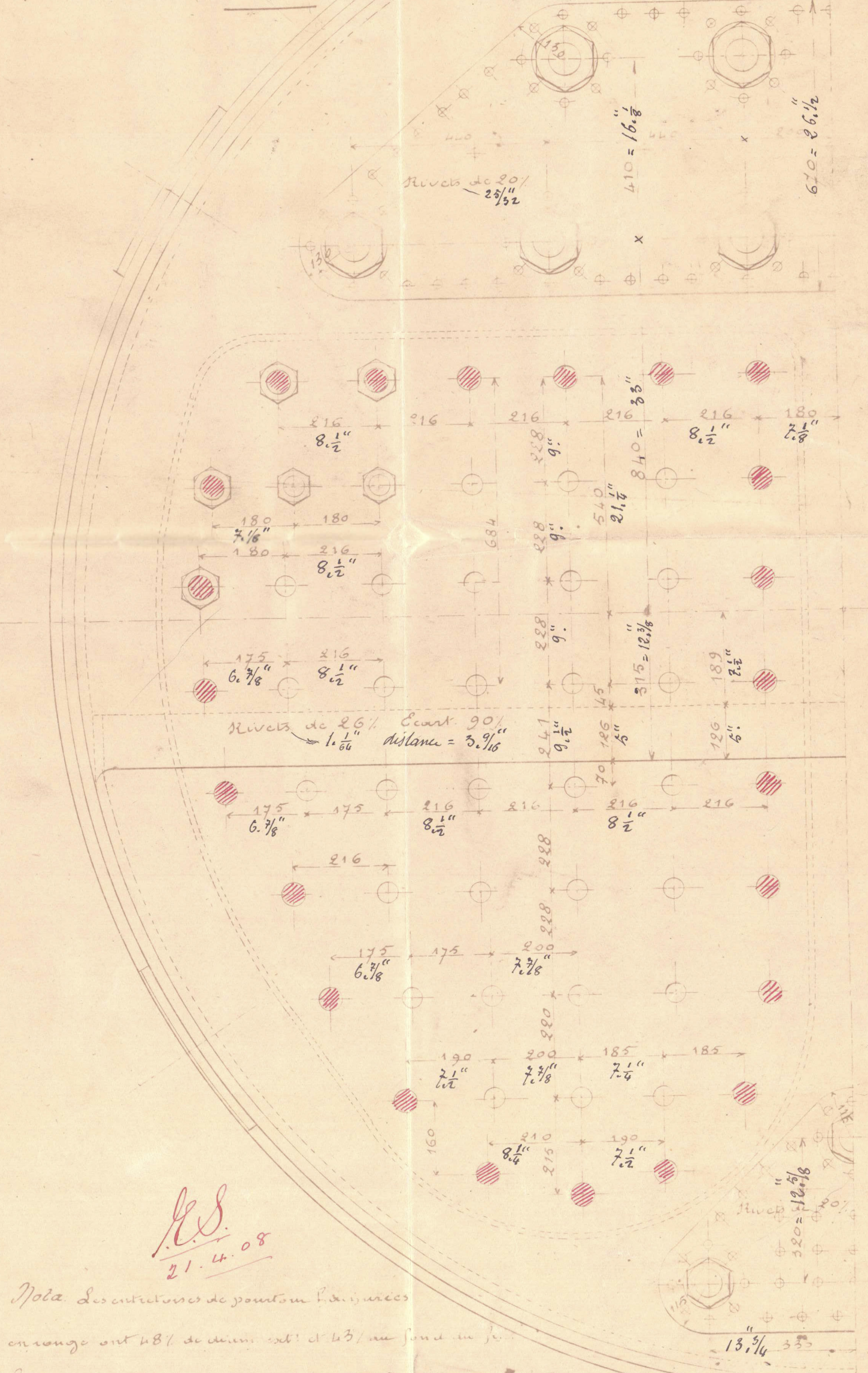


Development of the Shell = 56' 6" diameter external  
Development of the shell = 56' 6" diameter external  
Development of the shell = 56' 6" diameter external

Société des Ateliers et Chantiers de France  
Compagnie Havraise Peninsulaire  
Cargo-boat N. 56.  
Chaudières principales

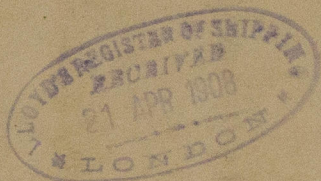
CAILLARD & Co  
INGÉNIEURS-CONSTRUCTEURS  
HAVRE  
Plan N° 27343  
Expédition 16463

Grille 13' 00" = Working pressure = 185 lbs per sq. inch  
Surface de chauffe 123' 50" Heating surface = 1350 square feet  
Surface de grille 3' 15' 6" Grate surface = 34 square feet  
Volume d'eau 15' 0' 0" each boiler.  
Volume de vapeur 7' 0' 0"  
Capacité totale 22' 0' 0"



Nota: Les chaudières de pression à vapeur  
ou vapeur ont été de même fait à 185 lbs par pouce carré  
des autres ont été de même fait à 30 lbs par pouce carré  
Nota: - The screw-downs in the marginal plates are 1 1/16" in bottom of thread  
the others are 1 1/16" diam in bottom of thread.





Plan of main-boilers, proposed to be built  
by M<sup>rs</sup> Caillaud & C<sup>o</sup> at Havre, for Vessel N<sup>o</sup> 56.  
"Engine Grosos" in building to the "ateliers & Chantiers  
d. France at Dunkirk." <sup>Dated 1847.</sup>

Vessel ordered by the "Compagnie Havraise Peninsulaire"  
of Havre.



© 2020

Lloyd's Register  
Foundation

W623-0212