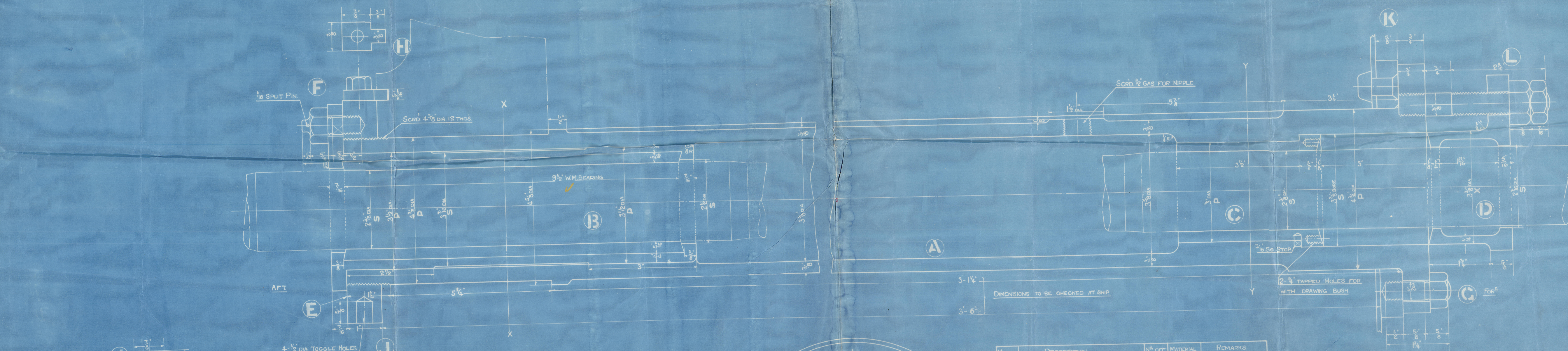


2/8/22

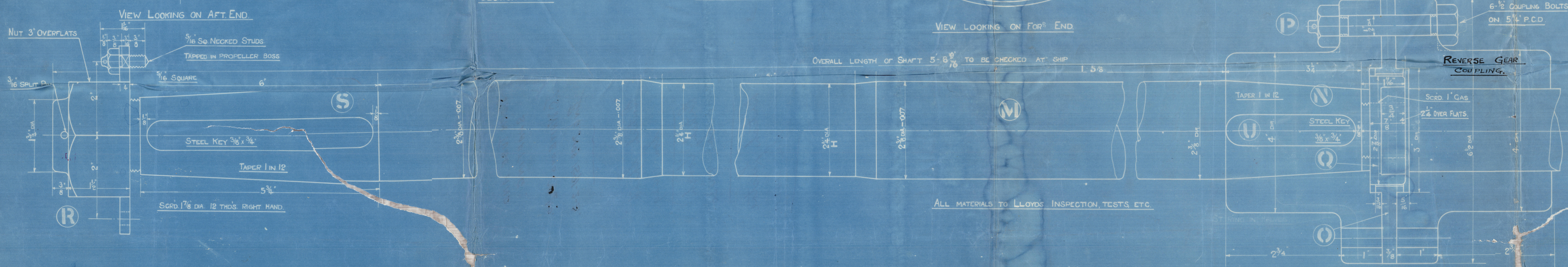


MARK	DESCRIPTION	Nº OFT	MATERIAL	REMARKS
A	STERN TUBE & STUFFING BOX	1	C.I.	
B	AFTER BEARING	1	G.M. & W.M.	
C	FOR	1	G.M.	
D	BEARING	1	"	Nº 32 STD. DWS. 2056
F	AFT BEARING STUDS	4	"	
G	STERN TUBE FOR	6	"	
H	STOP FOR ST NUT	1	"	
J	TAP BOLT FOR STOP	1	"	
K	BULKHEAD PAD PIECE	1	"	
L	GLAND STUDS & NUTS	2	R. N. B.	
M	TAIL SHAFT	1	W.F. ST.	
N	" COUPLING	1	CAST IRON	SUPPLIED BY GARDNER
O	COUPLING RING WITH SPLICOTS	1	W.F. ST.	SUPPLIED BY GARDNER
P	" BOLTS	6	"	
Q	" NUT	1	"	
R	PROPELLER	1	"	
S	" KEY	1	"	
T	" STOP & STUD	2	"	
U	COUPLING KEY	1	"	

MODIFIED TO RED 18/8/22.

- MACHINED
- ALL OVER
- COARSE FINISHED
- GROUND
- STANDARD
- EASY RUNNING FIT
- GOOD
- PUSH FIT
- DRAWING
- FORCE
- MEDIUM DRAWING FIT

QUANTITIES GIVEN ARE FOR ONE ENGINE Nº ONLY.



STERN TUBE & SHAFTING
FULL SIZE



STERN TUBE AND
SHAFTING.

J.S. WHITE AND CO. LTD.

ENG. NOS 1591-2-3.

"British Spark"
Sow 11429.

"British Torch."
Sow. 11430.

"British Lustre"
Sow. 11429.

RETAIN



© 2020

Lloyd's Register
W623-0053
Foundation