

MIDSHIP SECTION STEEL SCREW STEAMER

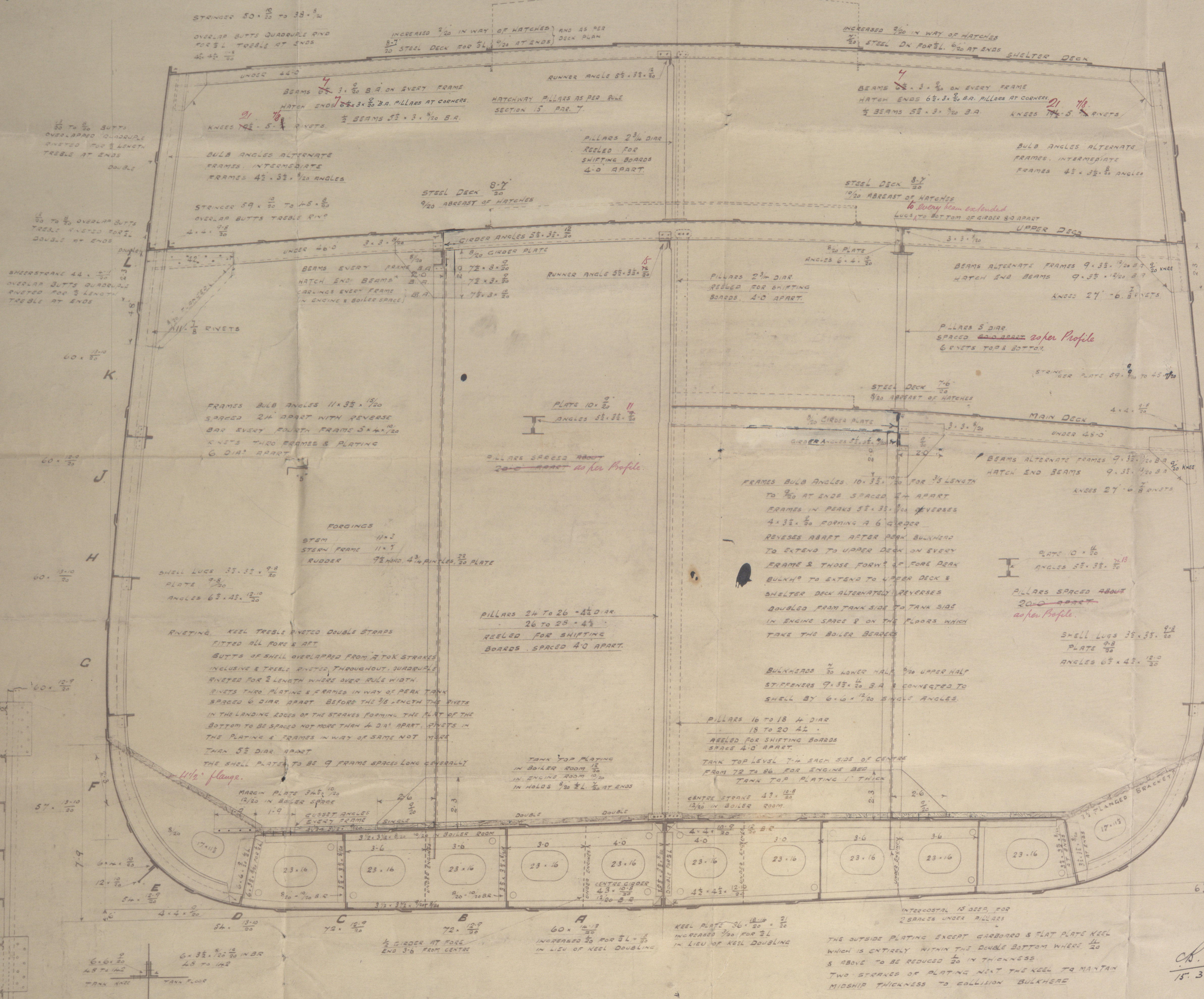
TO CLASS 100A1 AT LLOYDS THREE DECK RULE

380'0" x 48'9 1/2" MLD x 28'6" DEPTH MLD

SCALE 1" = 1'00"

Nº 421 SHIP.

15.3.07



1/2 CIRTH = 47.55
 1/2 BREADTH = 24.396
 DEPTH = 29.48
 LESS 7
 96.400 1st No
 LENGTH 378.10
 36.456 8 2nd No
 DEPTH TO LENGTH = 12.8
 BREADTH TO LENGTH = 7.7
 EQUIPMENT Nº
 103.406 x 378.10 = 39104.0
 SHELTER ON 378.10 x 7.5 x 1.5 = 4284.3
 DECK HOUSE 60 x 7.5 = 450.0
 EQUIPMENT Nº = 43908.3
 EQUIPMENT
 2 BOWERS STOCKLESS 60 CWT
 1 BOWER 51
 1 STREAM 10 1/2 24 STOCK
 1 KEDGE 7
 270 FMS 2 1/2 STUB CHAIN CABLE
 90 1/2 H.M. STEEL WIRE (STREAM)
 120 1/2 H.M. (TOW LINE)
 2 WAPES 90 FMS EACH 5 DIAMETER OF 2 1/2" STEEL WIRE
 2 90 7 2 1/2

SECTION BETWEEN BHDS Nº 40 to 72 & 98 to 144.

SECTION THRO Nº 1 & Nº 5 HOLDS.

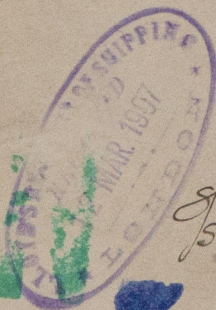


15.3.07.
 15.3.07.

451

amended

RETAIN



of Australia

Newcastle on Tyne

No 53553

Middle Section

RETAIN



© 2020

Lloyd's Register
6621-0154
Foundation