

15.3.07

LONGITUDINAL SECTION OF A STEEL SCREW STEAMER

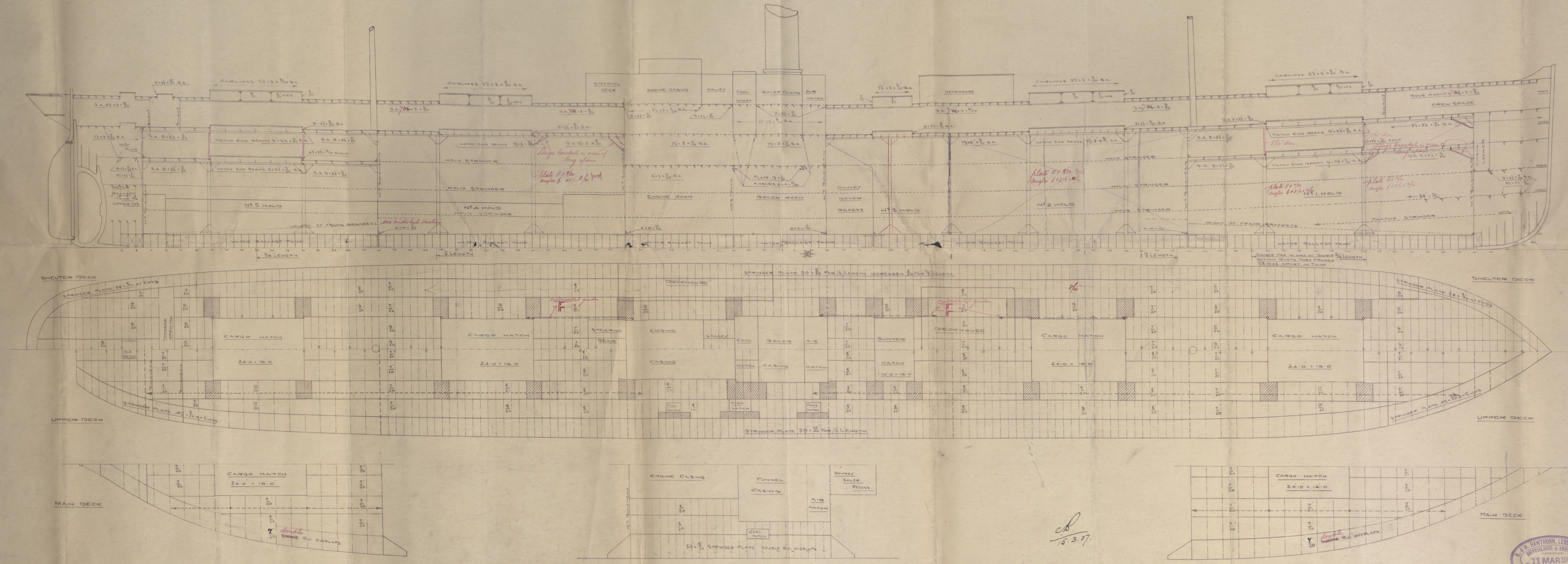
Nº 421

TO CLASS 100 A.1. AT LLOYD'S THREE DECK RULE

Australasia

380' 0" x 48' 9" MLD 28' 6" DEPTH MLD

SCALE 1/8" = 1 FOOT



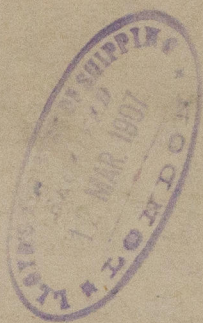
C.D.
15.3.07

R. & N. HAWTHORN, LESLIE & CO.
SHIPBUILDERS & ENGINEERS
11 MAR 1907
REPAIRING SHIPBUILDING YARD
NEWCASTLE-ON-TYNE

421

Amended

8 1/2" Australia
Newcastle-on-Tyne
No 53553



Longitudinal Section

RETAIN

RETAIN

W621-0153



© 2020

Lloyd's Register
Foundation