

# MIDSHIP SECTION.

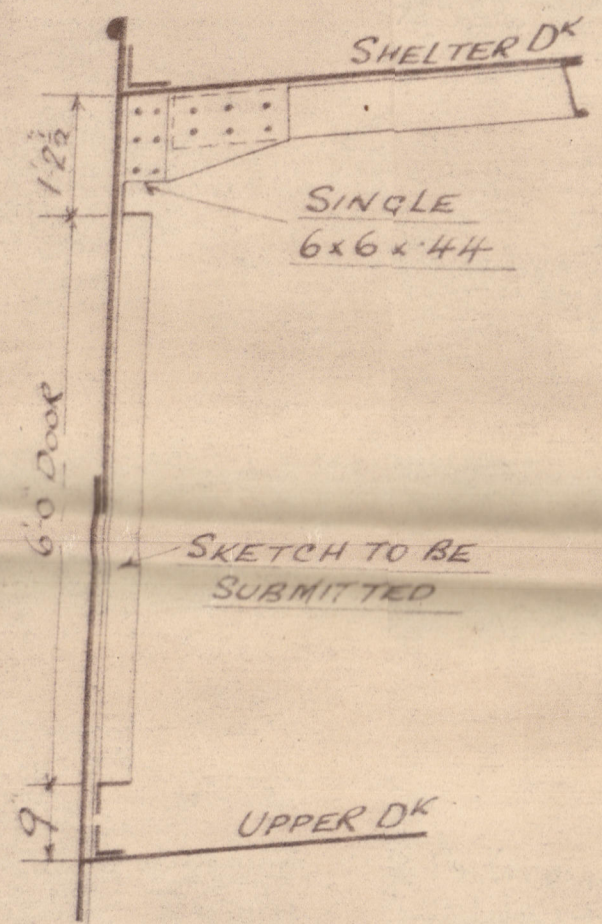
SCALE 1/2" = ONE FOOT

NOS 384-385

DIMENSIONS - 424.75 x 56.0 MLD x 30.7 1/2 D.MLD

DECK PLATING 40 UNDER WOOD SHEATHING. 46 CLEAR OF WOOD SHEATHING TO 42 AT ENDS INCREASED AT OPENINGS AS PER DECK PLAN. BUTTS DOUBLE FOR 1/2 L. SINGLE AT ENDS. SEAMS ALL SINGLE.

SKETCH SHOWING BEAM KNEE CONNECTION IN WAY OF DOOR FRAME



N. 65 1/2 x 72 to 46  
BUTTS QUAD OVERLAPS WITH 1" RIVETS & 1/4" OVERLAPS FOR 1/2 LENGTH TO TREBLE AT ENDS. INCREASED .02 FOR SIDELIGHTS. TO 72 TO 46.

M. 63 1/4 x 66 to 46  
BUTTS QUAD OVERLAPS WITH 1/8 RIVETING & 1/2" OVERLAPS TO TREBLE AT ENDS.

L. 63 1/4 x 64 to 46

BUTTS TREBLE OVERLAPS

K. 63 1/4 x 64 to 46

BUTTS TREBLE OVERLAPS.

J. 63 1/4 x 64 to 46

BUTTS TREBLE OVERLAPS.

H. 63 1/4 x 64 to 46

BUTTS TREBLE OVERLAPS.

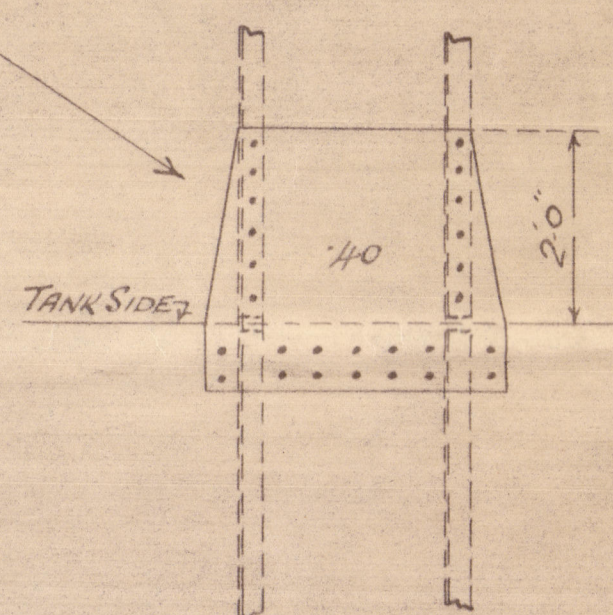
G. 63 1/4 x 66 to 46

BUTTS TREBLE OVERLAPS.

F. 62 x 66 to 48

BUTTS TREBLE OVERLAPS.

CONNECTION OF OUTSIDE BRACKETS TO MARGIN PLATE TO BE BY SINGLE 6x6x50 TO 48 WITH 12 1/8 RIVETS EACH WAY THROUGHOUT. GUSSETS FROM COLLISION BULKHEAD TO ENGINE ROOM BULKHEAD SPACED EQUAL TO RULE.



STRINGER 57 x 56 to 36 x 44  
BUTTS TREBLE OVERLAPS  
STRINGER ANGLE 5x5x62 TO 3 1/2 x 3 1/2 x 44

STRINGER 57 x 48 to 36 x 44  
BUTTS TREBLE OVERLAPS  
STRINGER ANGLE 3 1/2 x 3 1/2 x 48 TO 44  
INSIDE BAR KEPT 2" INSIDE FRAMES

STRINGER 58 x 44 to 36 x 44  
BUTTS TREBLE OVERLAPS  
STRINGER ANGLE 3 1/2 x 3 1/2 x 48 TO 44  
INSIDE BAR KEPT 2" INSIDE FRAMES

SIDE STRINGER

FACE BAR - 7 x 3 1/2 x 50 OR  
PLATE - 44  
SHELL LUGS - 3 1/2 x 3 1/2 x 44  
FRAME LUGS - 4 x 3 1/2 x 44

MARGIN PLATE RULE 35 x 48 & 58 IN BOILER SPACE  
BUTTS TREBLE OVERLAPS  
MARGIN ANGLE 4 x 4 x 48

HEIGHT OF BRACKETS MAINTAINED FORWARD

KNEES 40 TO 36

16x12

16x12

16x12

16x12

16x12

16x12

16x12

16x12

16x12

16x12

16x12

16x12

16x12

16x12

16x12

16x12

16x12

16x12

16x12

16x12

16x12

16x12

16x12

16x12

16x12

16x12

RIVETING OF BEAMS TO PLATING 7 DIAS APART UNDER 55.0  
THROUGH BEAMS 7 x 3 1/2 x 40 B.A. 26" APART WHERE SUPPORTED BY 3 ROWS OF PILLARS  
HALF " 7 x 3 1/2 x 40 " " " IN WAY OF HATCHES  
" " 8 x 3 1/2 x 44 " " " IN WAY OF MACHINERY SPACE  
STRONG " 9 x 3 1/2 x 66 ACROSS ENGINE SPACE, SPACED AS PER PROFILE WITH KNEES 28 x 54

RIVETING OF BEAMS TO PLATING 7 DIAS APART UNDER 56.0  
THROUGH BEAMS 7 x 3 1/2 x 40 B.A. 26" APART WHERE SUPPORTED BY 3 ROWS OF PILLARS  
HALF " 7 x 3 1/2 x 40 " " " IN WAY OF HATCHES  
" " 8 x 3 1/2 x 44 " " " IN MACHINERY SPACE  
STRONG BEAMS ACROSS ENGINE SPACE AS PER PROFILE.

RIVETING OF BEAMS TO PLATING 7 DIAS APART 56.0  
THROUGH BEAMS CLEAR OF PEAKS 8 x 3 1/2 x 42 B.A. 26" APART SUPPORTED BY 3 ROWS OF PILLARS  
" " IN PEAKS 7 x 3 1/2 x 40 B.A. 24" KNEES 24 x 46  
HALF BEAMS IN WAY OF ENGINE CASING 8 1/2 x 3 1/2 x 48 B.A. 26" APART  
STRONG BEAMS ACROSS ENGINE CASING AS PER PROFILE

FRAMES IN HOLDS & ENGINE ROOM 10 x 3 1/2 x 52 B.A. 26" APART. RIVETS 7 DIAS (EXCEPT DEEP TANK WHERE 5 1/2 DIA 15)  
FRAMES IN PEAKS 7 1/2 x 3 1/2 x 44 B.A. 24" APART. RIVETS 5 1/2 DIAS

SCREW FRAME = PROPELLER POST 10 1/2 x 8  
STEM BAR = 10 1/2 x 2 3/4  
RUDDER PLAN TO BE SUBMITTED

TANK TOP IN HOLDS 40 TO 36  
" " " ENGINE SPACE 50  
" " BUTTS DOUBLE FOR 1/2 L. SINGLE AT ENDS

CEILING LAID THROUGHOUT HOLDS  
NO MANHOLE IN WAY OF PILLARS.

FLOORS 40 TO 36

22x16

22x16

22x16

22x16

22x16

22x16

22x16

22x16

22x16

22x16

22x16

22x16

22x16

22x16

22x16

22x16

22x16

22x16

22x16

22x16

22x16

22x16

22x16

22x16

SHELTER DECK  
3 1/2 x 3 1/2 x 44

PILLARS 2 1/8 DIA 52" APART

UPPER DECK  
3 1/2 x 3 1/2 x 44  
116 BARS

PILLARS 2 1/4 DIA 52" APART

MAIN DECK  
3 1/2 x 3 1/2 x 46

NUMBERS.

|                  |                       |
|------------------|-----------------------|
| BEAM MOULDED     | 56.0                  |
| DEPTH MOULDED    | 30.625                |
| 86.625           | TRANSVERSE NO         |
| LENGTH           | 424.75                |
| 36790            | LONGITUDINAL NO       |
| DEPTHS TO LENGTH | 10.45 TO SHELTER DECK |
| DEPTH MOULDED    | 30.625                |
| DOUBLE BOTTOM    | 3.666                 |
| TWEEN DECKS      | 9.0 12.666            |
| d                | 17.969                |

PILLARS 4 1/4 DIA 52" APART. INCREASED AT ENDS PER RULE  
ARRANGEMENT OF WIDE SPACED QUARTER PILLARS & GIRDERS AS PER SEPARATE PLAN.

EQUIPMENT AS PER RULE

CENTRE PLATE RULE 44 x 52 TO 48  
60 x 50 TO 40  
BUTTS TREBLE OVERLAPS WHERE OVER 48  
REMAINDER DOUBLE

3 1/2 x 3 1/2 x 52 TO 48 (NO STRAP ANGLES)  
CENTRE KEELSON 44 x 52 TO 42  
BUTTS TREBLE OVERLAPS  
LUGS 6x6x50 FOR 1/2 L. & WITH 11 RIVETS.  
3 1/2 x 3 1/2 x 40 AT ENDS WITH 7 RIVETS.  
4 1/2 x 4 1/2 x 60 TO 56 (NO STRAP ANGLES)

KEEL 48 x 106 TO 74  
BUTTS DOUBLE STRAPS  
TREBLE RIVETED WITH 1/8 RIVETING & 2 1/2 STRAPS

44 x 56

3 1/2 x 3 1/2 x 62

LUGS 6x6x60

44 x 60

4 1/2 x 4 1/2 x 60

SHORT BROTHERS LTD  
SHIPBUILDERS.

SUNDERLAND 2020  
Lloyd's Register  
Foundation

SECTION IN WAY OF BOILER WELL.

W679-0215



Messrs Short Bros

384

Middle Section (As Shet)

P.D. "Moonish Prince"

Lo. Regt No. 26112

RETAIN

RETAIN



W 619-0215

© 2020

Lloyd's Register  
Foundation