

132214



Nº 2006 BOILERS (FOR MESSRS H & C GRAYSON LTD)

TWO BOILERS THUS

554 IRON TUBES 3/4" EXT DIA 8'-0" LONG x 1/2" W.G. (INCLUDING 166 STAY TUBES)

HEATING SURFACE OF TUBES 3650 SQ FEET

" " " FURNACES 850 " "

TOTAL 4500 " " (TWO BOILERS)

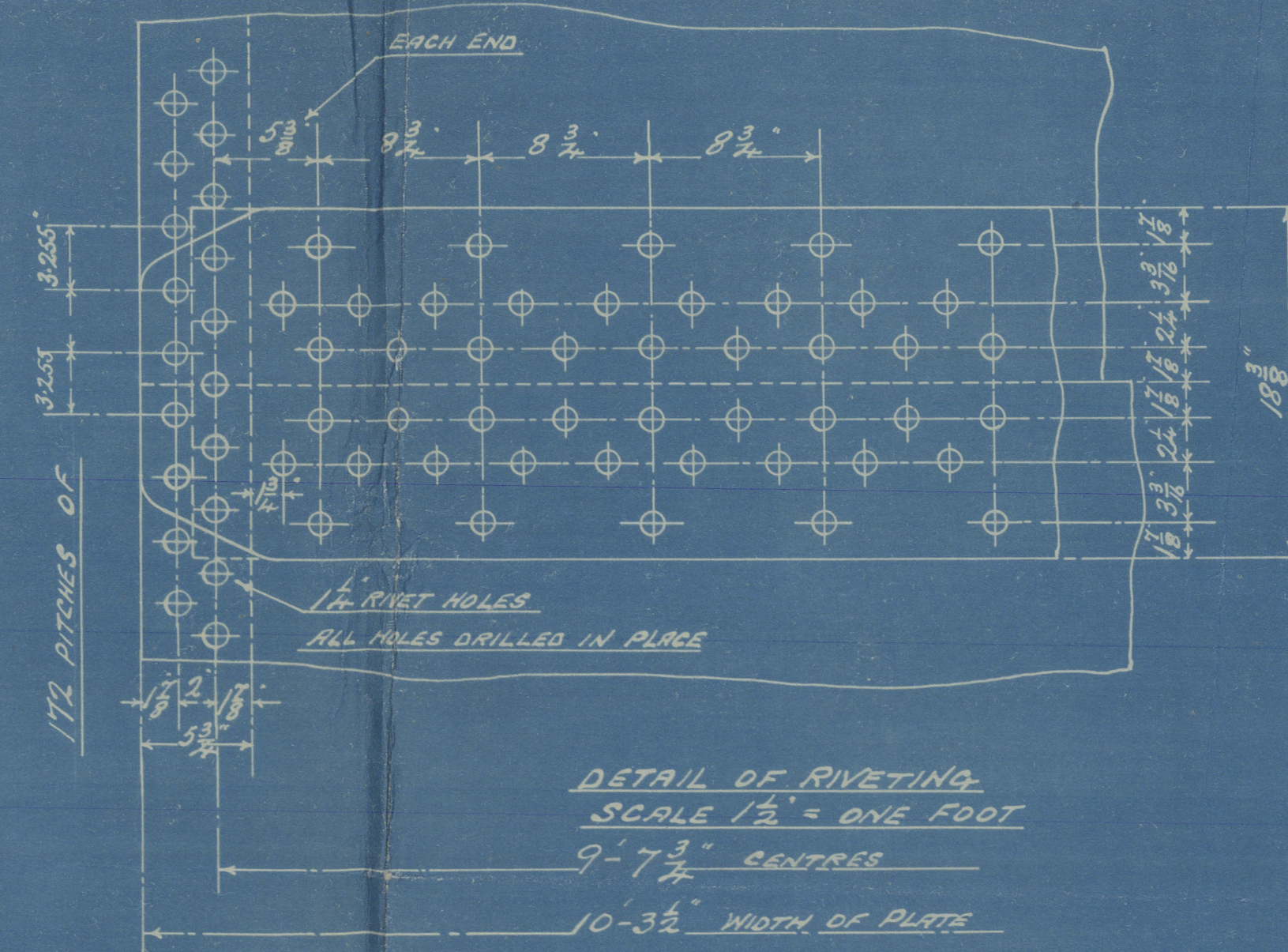
TOTAL AREA OF FIRE-GRATE (6'-0" BARS) 130 SQ FEET

WORKING PRESSURE 180 LBS PER SQ INCH

TEST " 360 " "

TO PASS LLOYDS SURVEY & REQUIREMENTS

ADDITIONAL TO THE SPECIFICATION
 WITH LLOYD'S SURVEY 2, 9th/18



DIAMETER OF BOILER INSIDE 14'-9"

THICKNESS OF SHELL 1 1/8"

DIAMETER OF RIVET HOLES 1 1/8"

THICKNESS OF BUTT-STRAPS - INSIDE 1 3/8" OUTSIDE 1 1/2"

STRENGTH OF LONGIT. SEAMS

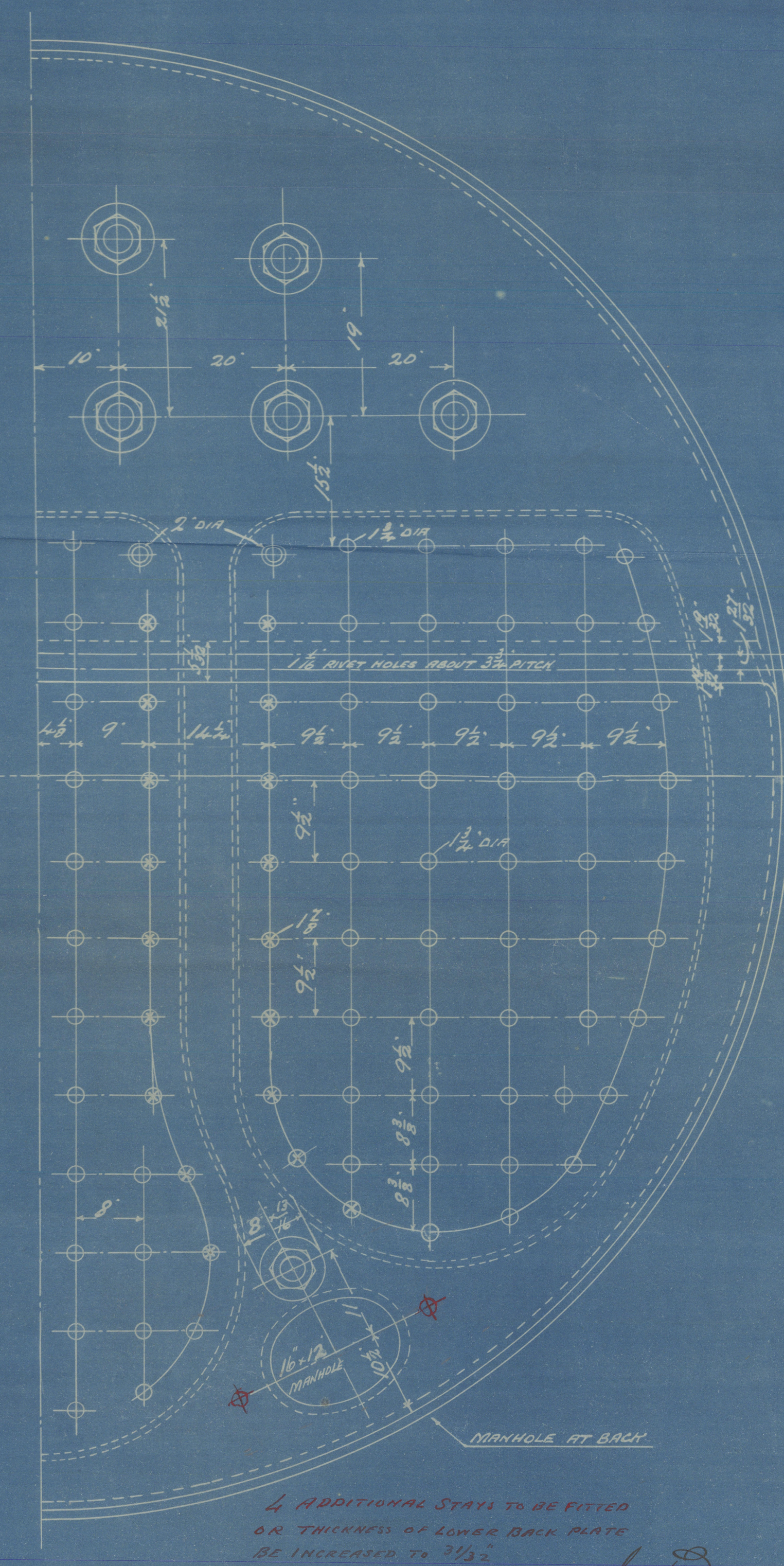
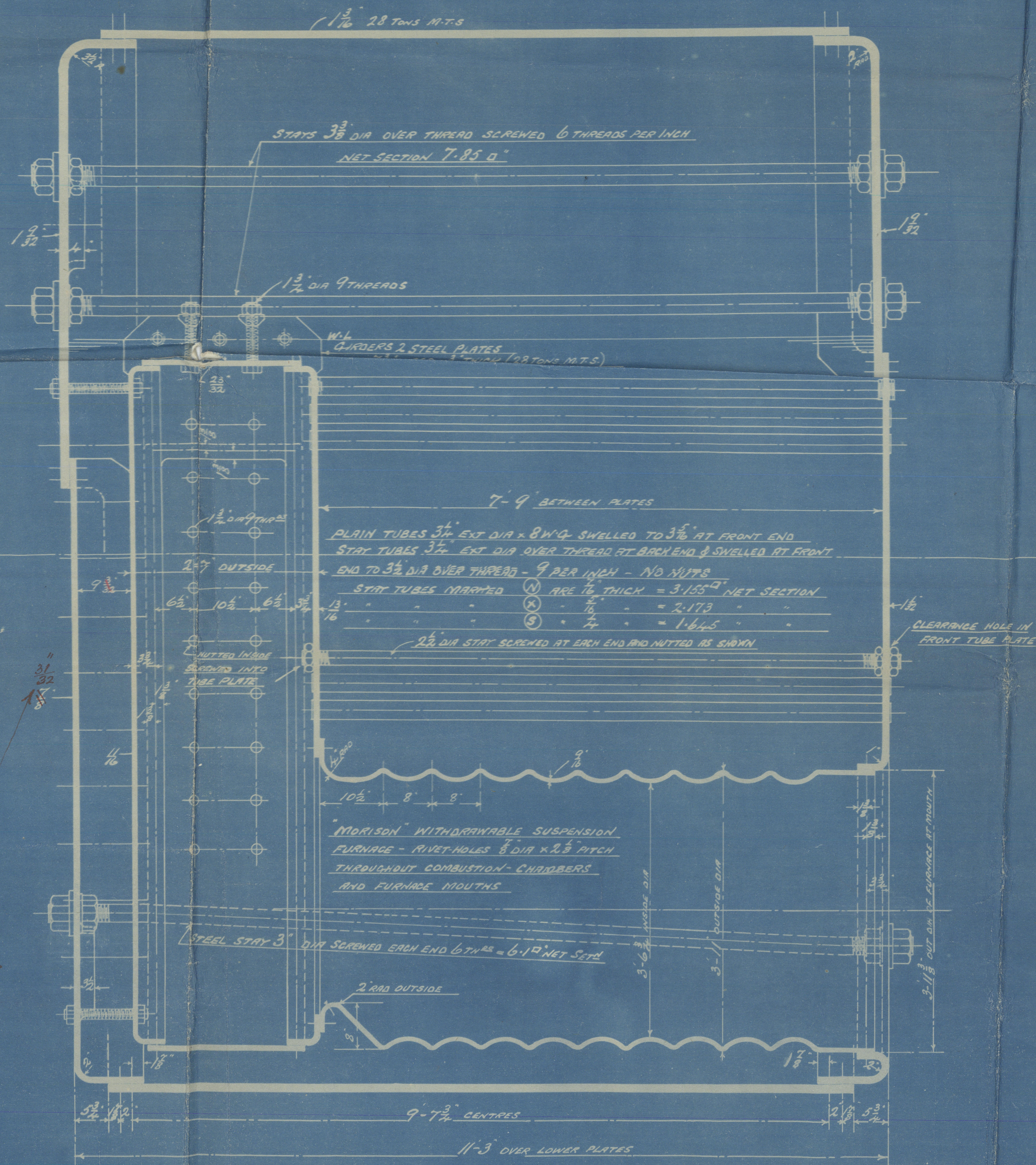
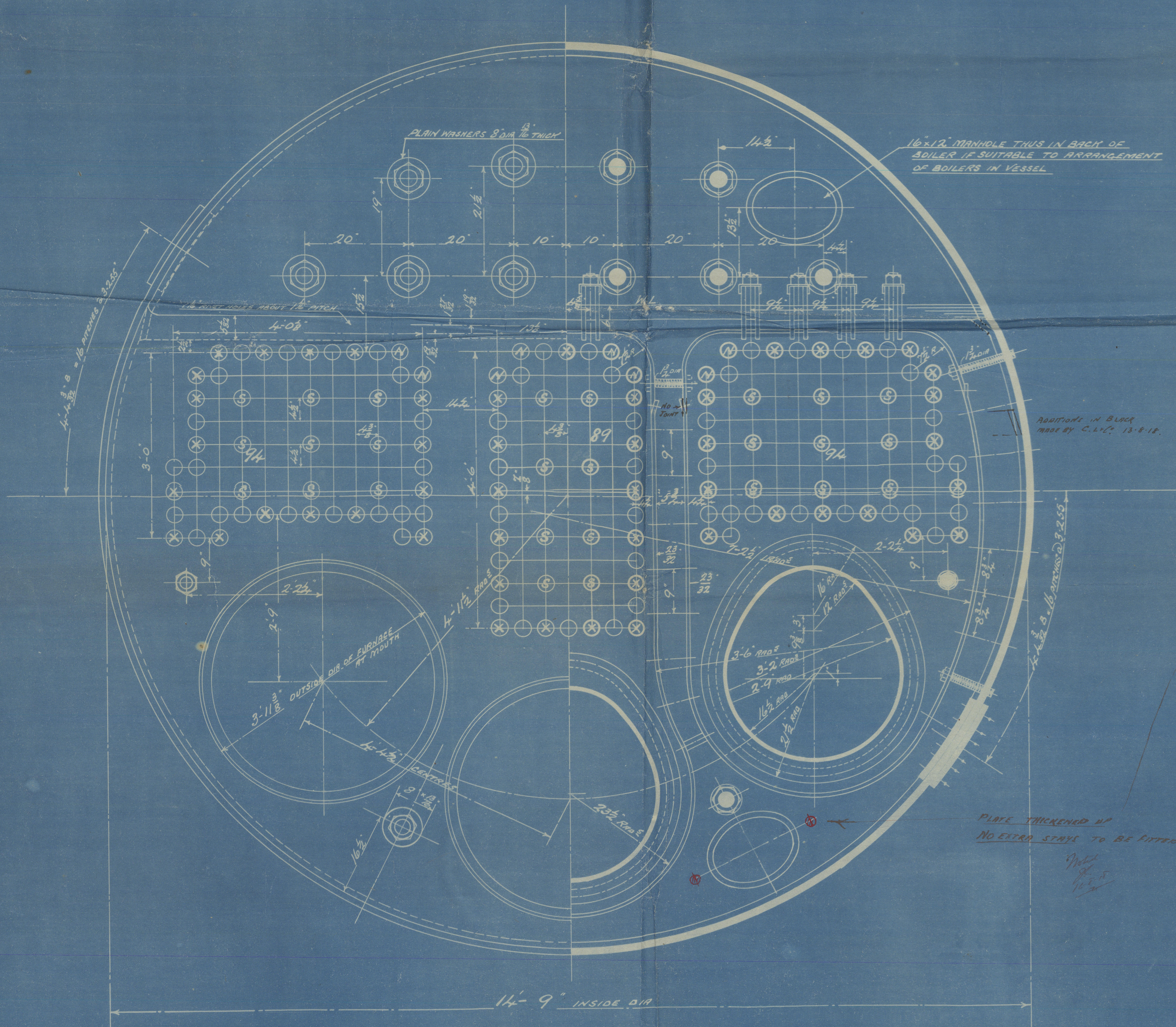
PLATE - TO LLOYDS REQUIREMENTS 85.71 %

RIVET - " 87.8 %

MINIMUM TENSILE STRENGTH OF SHELL AND BUTT-STRAPS 28 TONS

POSITION OF STAY	MARK	DIA 5"	EDGE DIST	THICK PER INCH
ACROSS TOP & SIDES	○	1 3/4"	2'-03" 12"	9
WIDE WATER SPACE	⊙	1 1/2"	2'-36" 13"	"
TOP CHAIN W.S.	⊙	2"	2'-71" 12"	"

ALL FIREBOX STAYS SCREWED THRU BOTH PLATES & NUTS FITTED AT EACH END, EXCEPT STAYS FROM WING CORRUG. BOX TO SHELL WHICH PROJECT 1/2" AND ARE DRILLED



Scale 1" = One Foot

4 ADDITIONAL STAYS TO BE FITTED
 OR THICKNESS OF LOWER BACK PLATE
 BE INCREASED TO 3 1/8"

10.15
 10.18
 10.19
 10.20
 10.21
 10.22
 10.23
 10.24
 10.25
 10.26
 10.27
 10.28
 10.29
 10.30
 10.31
 10.32
 10.33
 10.34
 10.35
 10.36
 10.37
 10.38
 10.39
 10.40
 10.41
 10.42
 10.43
 10.44
 10.45
 10.46
 10.47
 10.48
 10.49
 10.50
 10.51
 10.52
 10.53
 10.54
 10.55
 10.56
 10.57
 10.58
 10.59
 10.60
 10.61
 10.62
 10.63
 10.64
 10.65
 10.66
 10.67
 10.68
 10.69
 10.70
 10.71
 10.72
 10.73
 10.74
 10.75
 10.76
 10.77
 10.78
 10.79
 10.80
 10.81
 10.82
 10.83
 10.84
 10.85
 10.86
 10.87
 10.88
 10.89
 10.90
 10.91
 10.92
 10.93
 10.94
 10.95
 10.96
 10.97
 10.98
 10.99
 11.00
 11.01
 11.02
 11.03
 11.04
 11.05
 11.06
 11.07
 11.08
 11.09
 11.10
 11.11
 11.12
 11.13
 11.14
 11.15
 11.16
 11.17
 11.18
 11.19
 11.20
 11.21
 11.22
 11.23
 11.24
 11.25
 11.26
 11.27
 11.28
 11.29
 11.30
 11.31
 11.32
 11.33
 11.34
 11.35
 11.36
 11.37
 11.38
 11.39
 11.40
 11.41
 11.42
 11.43
 11.44
 11.45
 11.46
 11.47
 11.48
 11.49
 11.50
 11.51
 11.52
 11.53
 11.54
 11.55
 11.56
 11.57
 11.58
 11.59
 11.60
 11.61
 11.62
 11.63
 11.64
 11.65
 11.66
 11.67
 11.68
 11.69
 11.70
 11.71
 11.72
 11.73
 11.74
 11.75
 11.76
 11.77
 11.78
 11.79
 11.80
 11.81
 11.82
 11.83
 11.84
 11.85
 11.86
 11.87
 11.88
 11.89
 11.90
 11.91
 11.92
 11.93
 11.94
 11.95
 11.96
 11.97
 11.98
 11.99
 12.00
 12.01
 12.02
 12.03
 12.04
 12.05
 12.06
 12.07
 12.08
 12.09
 12.10
 12.11
 12.12
 12.13
 12.14
 12.15
 12.16
 12.17
 12.18
 12.19
 12.20
 12.21
 12.22
 12.23
 12.24
 12.25
 12.26
 12.27
 12.28
 12.29
 12.30
 12.31
 12.32
 12.33
 12.34
 12.35
 12.36
 12.37
 12.38
 12.39
 12.40
 12.41
 12.42
 12.43
 12.44
 12.45
 12.46
 12.47
 12.48
 12.49
 12.50
 12.51
 12.52
 12.53
 12.54
 12.55
 12.56
 12.57
 12.58
 12.59
 12.60
 12.61
 12.62
 12.63
 12.64
 12.65
 12.66
 12.67
 12.68
 12.69
 12.70
 12.71
 12.72
 12.73
 12.74
 12.75
 12.76
 12.77
 12.78
 12.79
 12.80
 12.81
 12.82
 12.83
 12.84
 12.85
 12.86
 12.87
 12.88
 12.89
 12.90
 12.91
 12.92
 12.93
 12.94
 12.95
 12.96
 12.97
 12.98
 12.99
 13.00
 13.01
 13.02
 13.03
 13.04
 13.05
 13.06
 13.07
 13.08
 13.09
 13.10
 13.11
 13.12
 13.13
 13.14
 13.15
 13.16
 13.17
 13.18
 13.19
 13.20
 13.21
 13.22
 13.23
 13.24
 13.25
 13.26
 13.27
 13.28
 13.29
 13.30
 13.31
 13.32
 13.33
 13.34
 13.35
 13.36
 13.37
 13.38
 13.39
 13.40
 13.41
 13.42
 13.43
 13.44
 13.45
 13.46
 13.47
 13.48
 13.49
 13.50
 13.51
 13.52
 13.53
 13.54
 13.55
 13.56
 13.57
 13.58
 13.59
 13.60
 13.61
 13.62
 13.63
 13.64
 13.65
 13.66
 13.67
 13.68
 13.69
 13.70
 13.71
 13.72
 13.73
 13.74
 13.75
 13.76
 13.77
 13.78
 13.79
 13.80
 13.81
 13.82
 13.83
 13.84
 13.85
 13.86
 13.87
 13.88
 13.89
 13.90
 13.91
 13.92
 13.93
 13.94
 13.95
 13.96
 13.97
 13.98
 13.99
 14.00
 14.01
 14.02
 14.03
 14.04
 14.05
 14.06
 14.07
 14.08
 14.09
 14.10
 14.11
 14.12
 14.13
 14.14
 14.15
 14.16
 14.17
 14.18
 14.19
 14.20
 14.21
 14.22
 14.23
 14.24
 14.25
 14.26
 14.27
 14.28
 14.29
 14.30
 14.31
 14.32
 14.33
 14.34
 14.35
 14.36
 14.37
 14.38
 14.39
 14.40
 14.41
 14.42
 14.43
 14.44
 14.45
 14.46
 14.47
 14.48
 14.49
 14.50
 14.51
 14.52
 14.53
 14.54
 14.55
 14.56
 14.57
 14.58
 14.59
 14.60
 14.61
 14.62
 14.63
 14.64
 14.65
 14.66
 14.67
 14.68
 14.69
 14.70
 14.71
 14.72
 14.73
 14.74
 14.75
 14.76
 14.77
 14.78
 14.79
 14.80
 14.81
 14.82
 14.83
 14.84
 14.85
 14.86
 14.87
 14.88
 14.89
 14.90
 14.91
 14.92
 14.93
 14.94
 14.95
 14.96
 14.97
 14.98
 14.99
 15.00
 15.01
 15.02
 15.03
 15.04
 15.05
 15.06
 15.07
 15.08
 15.09
 15.10
 15.11
 15.12
 15.13
 15.14
 15.15
 15.16
 15.17
 15.18
 15.19
 15.20
 15.21
 15.22
 15.23
 15.24
 15.25
 15.26
 15.27
 15.28
 15.29
 15.30
 15.31
 15.32
 15.33
 15.34
 15.35
 15.36
 15.37
 15.38
 15.39
 15.40
 15.41
 15.42
 15.43
 15.44
 15.45
 15.46
 15.47
 15.48
 15.49
 15.50
 15.51
 15.52
 15.53
 15.54
 15.55
 15.56
 15.57
 15.58
 15.59
 15.60
 15.61
 15.62
 15.63
 15.64
 15.65
 15.66
 15.67
 15.68
 15.69
 15.70
 15.71
 15.72
 15.73
 15.74
 15.75
 15.76
 15.77
 15.78
 15.79
 15.80
 15.81
 15.82
 15.83
 15.84
 15.85
 15.86
 15.87
 15.88
 15.89
 15.90
 15.91
 15.92
 15.93
 15.94
 15.95
 15.96
 15.97
 15.98
 15.99
 16.00
 16.01
 16.02
 16.03
 16.04
 16.05
 16.06
 16.07
 16.08
 16.09
 16.10
 16.11
 16.12
 16.13
 16.14
 16.15
 16.16
 16.17
 16.18
 16.19
 16.20
 16.21
 16.22
 16.23
 16.24
 16.25
 16.26
 16.27
 16.28
 16.29
 16.30
 16.31
 16.32
 16.33
 16.34
 16.35
 16.36
 16.37
 16.38
 16.39
 16.40
 16.41
 16.42
 16.43
 16.44
 16.45
 16.46
 16.47
 16.48
 16.49
 16.50
 16.51
 16.52
 16.53
 16.54
 16.55
 16.56
 16.57
 16.58
 16.59
 16.60
 16.61
 16.62
 16.63
 16.64
 16.65
 16.66
 16.67
 16.68
 16.69
 16.70
 16.71
 16.72
 16.73
 16.74
 16.75
 16.76
 16.77
 16.78
 16.79
 16.80
 16.81
 16.82
 16.83
 16.84
 16.85
 16.86
 16.87
 16.88
 16.89
 16.90
 16.91
 16.92
 16.93
 16.94
 16.95
 16.96
 16.97
 16.98
 16.99
 17.00
 17.01
 17.02
 17.03
 17.04
 17.05
 17.06
 17.07
 17.08
 17.09
 17.10
 17.11
 17.12
 17.13
 17.14
 17.15
 17.16
 17.17
 17.18
 17.19
 17.20
 17.21
 17.22
 17.23
 17.24
 17.25
 17.26
 17.27
 17.28
 17.29
 17.30
 17.31
 17.32
 17.33
 17.34
 17.35
 17.36
 17.37
 17.38
 17.39
 17.40
 17.41
 17.42
 17.43
 17.44
 17.45
 17.46
 17.47
 17.48
 17.49
 17.50
 17.51
 17.52
 17.53
 17.54
 17.55
 17.56
 17.57
 17.58
 17.59
 17.60
 17.61
 17.62
 17.63
 17.64
 17.65
 17.66
 17.67
 17.68
 17.69
 17.70
 17.71
 17.72
 17.73
 17.74
 17.75
 17.76
 17.77
 17.78
 17.79
 17.80
 17.81
 17.82
 17.83
 17.84
 17.85
 17.86
 17.87
 17.88
 17.89
 17.90
 17.91
 17.92
 17.93
 17.94
 17.95
 17.96
 17.97
 17.98
 17.99
 18.00
 18.01
 18.02
 18.03
 18.04
 18.05
 18.06
 18.07
 18.08
 18.09
 18.10
 18.11
 18.12
 18.13
 18.14
 18.15
 18.16
 18.17
 18.18
 18.19
 18.20
 18.21
 18.22
 18.23
 18.24
 18.25
 18.26
 18.27
 18.28
 18.29
 18.30
 18.31
 18.32
 18.33
 18.34
 18.35
 18.36
 18.37
 18.38
 18.39
 18.40
 18.41
 18.42
 18.43
 18.44
 18.45
 18.46
 18.47
 18.48
 18.49
 18.50
 18.51
 18.52
 18.53
 18.54
 18.55
 18.56
 18.57
 18.58
 18.59
 18.60
 18.61
 18.62
 18.63
 18.64
 18.65
 18.66
 18.67
 18.68
 18.69
 18.70
 18.71
 18.72
 18.73
 18.74
 18.75
 18.76
 18.77
 18.78
 18.79
 18.80
 18.81
 18.82
 18.83
 18.84
 18.85
 18.86
 18.87
 18.88
 18.89
 18.90
 18.91
 18.92
 18.93
 18.94
 18.95
 18.96
 18.97
 18.98
 18.99
 19.00
 19.01
 19.02
 19.03
 19.04
 19.05
 19.06
 19.07
 19.08
 19.09
 19.10
 19.11
 19.12
 19.13
 19.14
 19.15
 19.16
 19.17
 19.18
 19.19
 19.20
 19.21
 19.22
 19.23
 19.24
 19.25
 19.26
 19.27
 19.28
 19.29
 19.30
 19.31
 19.32
 19.33
 19.34
 19.35
 19.36
 19.37
 19.38
 19.39
 19.40
 19.41
 19.42
 19.43
 19.44
 19.45
 19.46
 19.47
 19.48
 19.49
 19.50
 19.51
 19.52
 19.53
 19.54
 19.55
 19.56
 19.57
 19.58
 19.59
 19.60
 19.61
 19.62
 19.63
 19.64
 19.65
 19.66
 19.67
 19.68
 19.69
 19.70
 19.71
 19.72
 19.73
 19.74
 19.75
 19.76
 19.77
 19.78
 19.79
 19.80
 19.81
 19.82
 19.83
 19.84
 19.85
 19.86
 19.87
 19.88
 19.89
 19.90
 19.91
 19.92
 19.93
 19.94
 19.95
 19.96
 19.97
 19.98
 19.99
 20.00
 20.01
 20.02
 20.03
 20.04
 20.05
 20.06
 20.07
 20.08
 20.09
 20.10
 20.11
 20.12
 20.13
 20.14
 20.15
 20.16
 20.17
 20.18
 20.19
 20.20
 20.21
 20.22
 20.23
 20.24
 20.25
 20.26
 20.27
 20.28
 20.29
 20.30
 20.31
 20.32
 20.33
 20.34
 20.35
 20.36
 20.37
 20.38
 20.39
 20.40
 20.41
 20.42
 20.43
 20.44
 20.45
 20.46
 20.47
 20.48
 20.49
 20.50
 20.51
 20.52
 20.53
 20.54
 20.55
 20.56
 20.57
 20.58
 20.59
 20.60
 20.61
 20.62
 20.63
 20.64
 20.65
 20.66
 20.67
 20.68
 20.69
 20.70
 20.71
 20.72
 20.73
 20.74
 20.75
 20.76
 20.77
 20.78
 20.79

Cammell Band 7th 6

Bulter no 2006

In Seasons
S/S no 106

S. S. *War Yare*

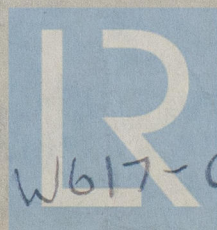
LIVERPOOL.

Report No. *79060*

RETAIR



RETAIR



© 2020

W617-0013 Lloyd's Register
Foundation