

S. S. "CALDER"

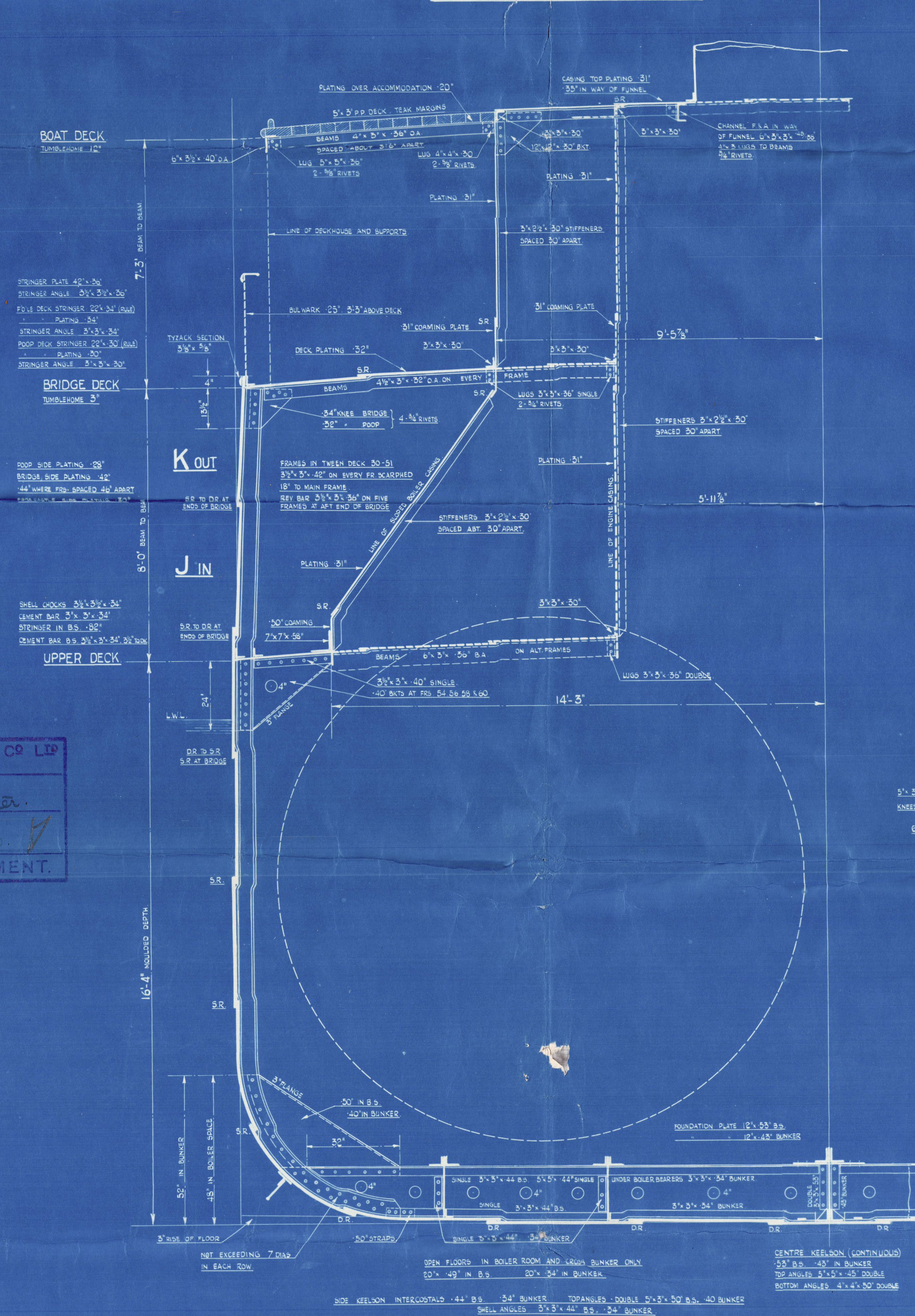
MIDSHIP SECTION.

DIMENSIONS 240'-0" B.P. x 34'-0" MLD. x 16'-4" MLD. TO UPPER DK.

SCALE: 1/2" = ONE FOOT.

TO CLASS LLOYDS 100 A.I.

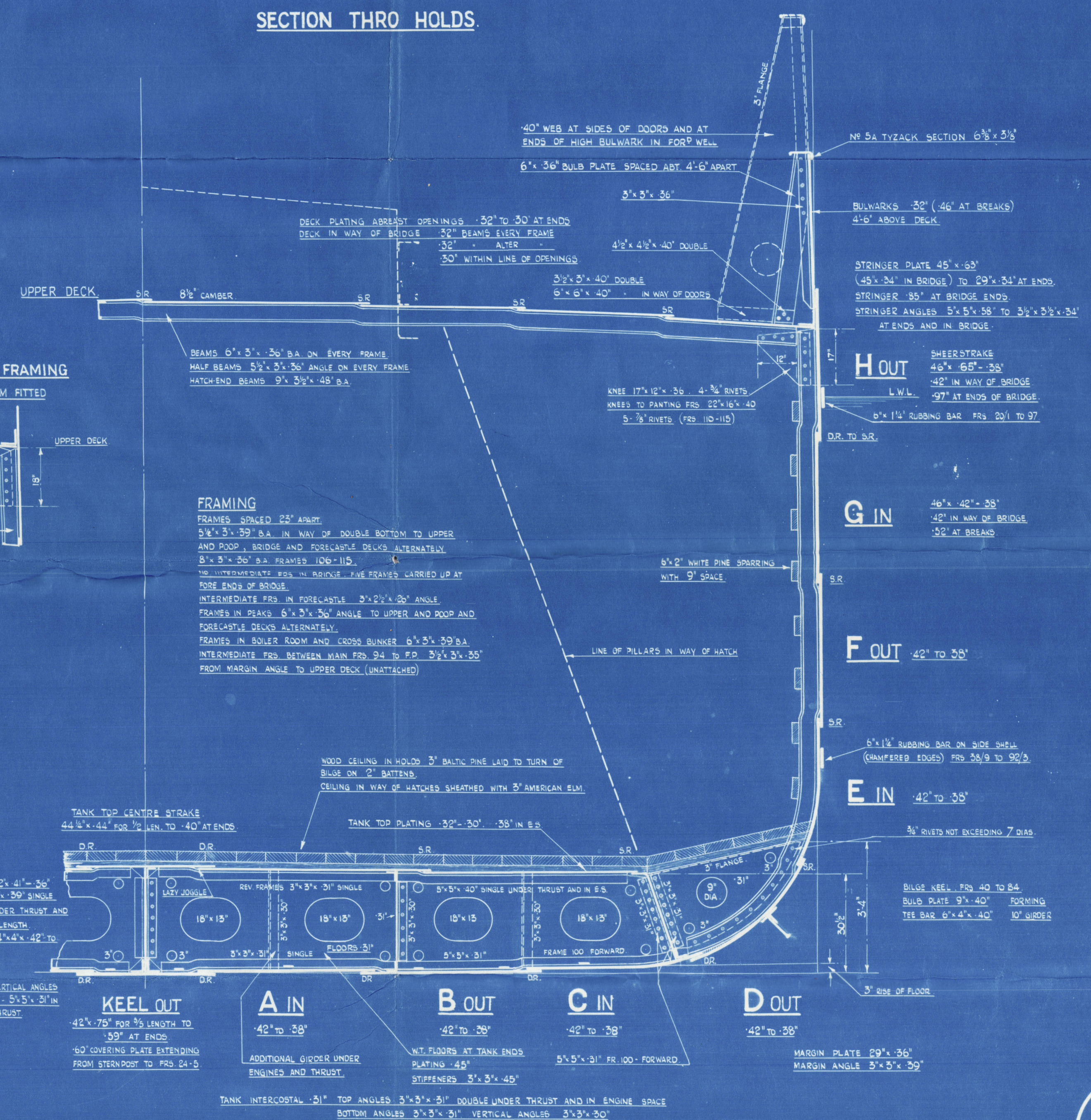
SECTION THRO. BOILER ROOM.



RIVETING.

KEEL BUTTS, QUAD. RIV. OVERLAPS FOR 1/2 LEN. TO T.R. AT ENDS (EXCEPT AT EXTREME ENDS WHERE T.R. STRAP)
CENTRE GIRDER BUTTS, TREBLE RIV. TO DOUBLE AT ENDS (WHERE NOT EXCEEDING 30')
TANK TOP CENTRE STRAKE, T.R. FOR 1/2 LEN. TO D.R. AT ENDS
TANK TOP PLATING, D.R. * * * * S.R. * * *
MARGIN PLATE, D.R. THROUGHOUT.
BOTTOM SHELL (TO UPPER TURN OF BILGE) BUTTS T.R. FOR 1/2 LEN. TO D.R. AT ENDS.
SIDE SHELL BUTTS D.R. THROUGHOUT.
SHEERSTRAKE IN WELLS BUTTS Q.R. FOR 1/2 LEN. TO D.R. AT ENDS. (QUIN. RIV. AT BREAKS)
STRAKE BELOW * T.R. * * * * *
UPPER DK. STRINGER Q.R. * * * * * (D.R. IN BRIDGE QUIN. RIV. AT BREAKS)
UPPER DK. PLATING D.R. * * * * S.R. * * *
POOP AND F.C.L. STRINGER & DECK, ALL BUTTS S.R. THROUGHOUT.
BRIDGE DK. STRINGER D.R. THROUGHOUT.
BRIDGE DK. PLATING D.R. *
BRIDGE SIDE PLATING BUTTS T.R.
POOP & F.C.L. SIDE PLATING * S.R.

SECTION THRO HOLDS.



CAMMELL LAIRD & CO. LTD.
BIRKENHEAD.
FOR ENCL. TO
Lloyd's Register.
DATE 12.12.30.
SHIP DEPARTMENT.

Cammell Laird & Co's
No 976

Midship Section (as built)

S. S. "Calder"

LIVERPOOL

Report No. 97993

W.B. 69. Top

RETAIN



© 2020

Lloyd's Register
Foundation

Wb15-0246