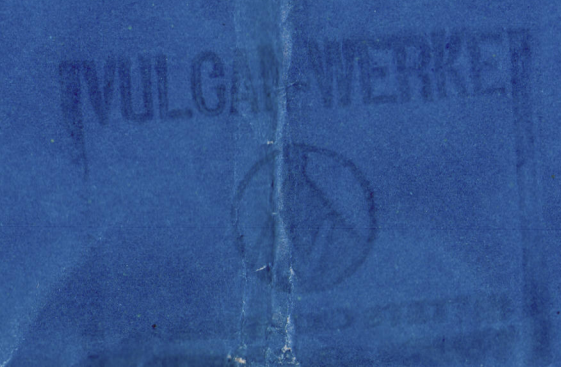


3-9-21

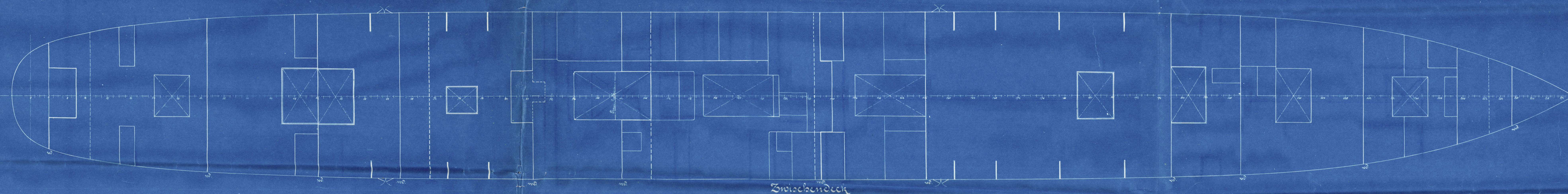


Schiff Nr. 264.

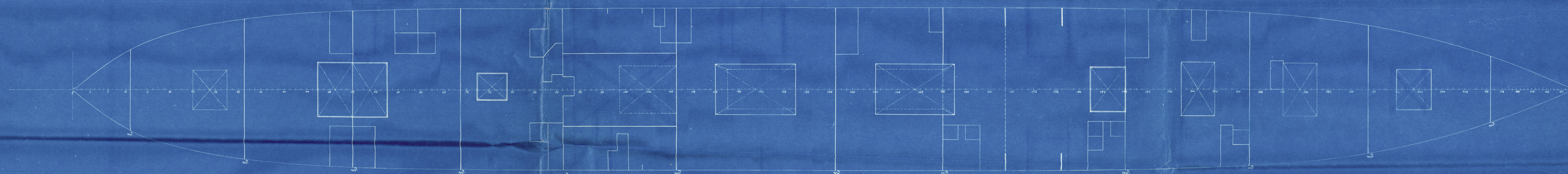
1:200.

Die stark ausgezogenen Linien bezeichnen Stahlbohrte u. Rahmenspanne von 8mm Dicke.
Die dünn ausgezogenen Linien bezeichnen Stahlwände von 6mm Dicke, resp. 102. Schotte.

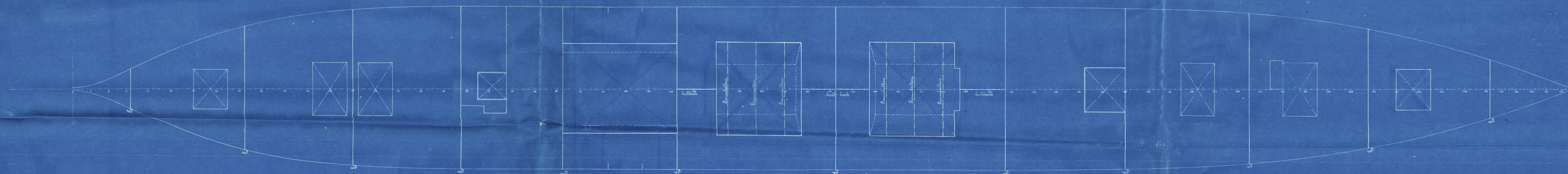
Blatt Nr. 3



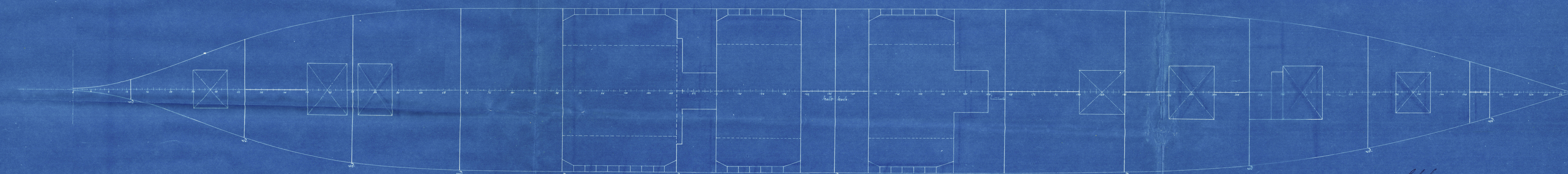
Zwischendeck



Unterdeck



Oberdeck



Raumdeck

bbf.
2-9-21.

W611-0138

RETAIN

Empress of Scotland

Upper Llanwrda

Vulcan Works No 264

Ham. letter 25/8/21

Ham. Report No 14892



© 2021

Lloyd's Register
Foundation