

"Douv. Series"

Projet de Cargo-boat de 3600^{ton}.

General arrangement
Plan des Emmenagements

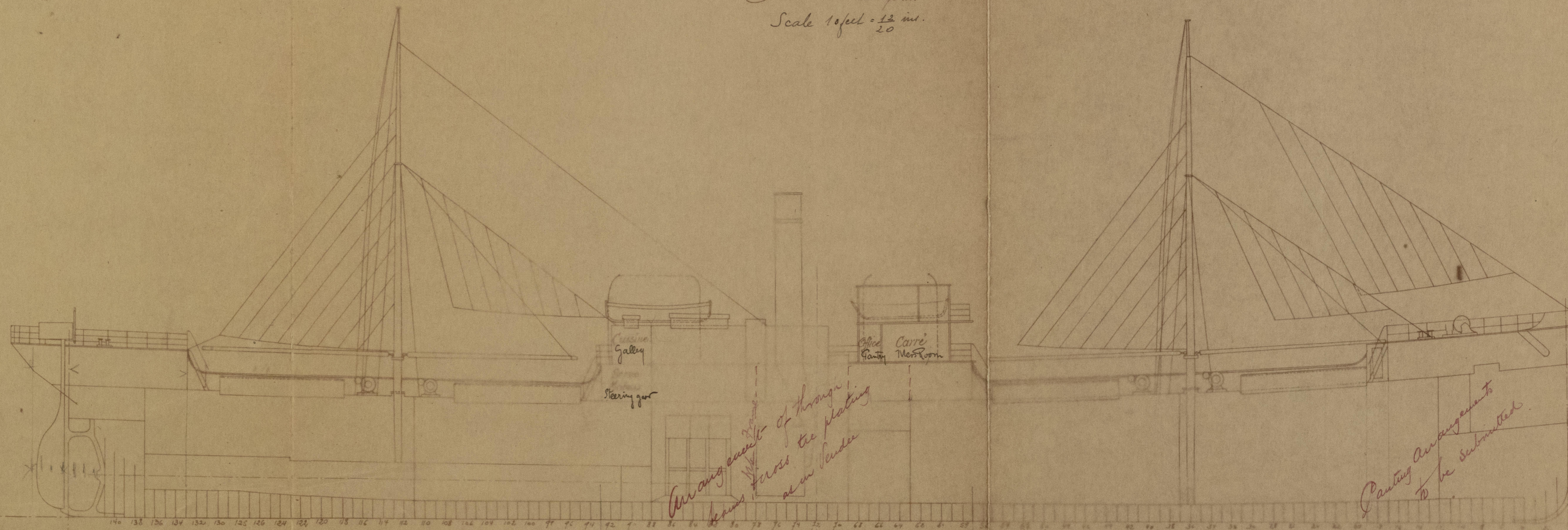
Tourist ship
app. 8/11/06.

24.10.05
2.1.06

FORGES & CHANTIERS DE LA MEDITERRANEE
HAVRE.
N° 39083
A. de la Pointe 24.07.11
Chantier de Gravelle 16 Octobre 1905

Tourist ship
8.11.06

Echelle 0.005 p.m.
Scale 1/2000

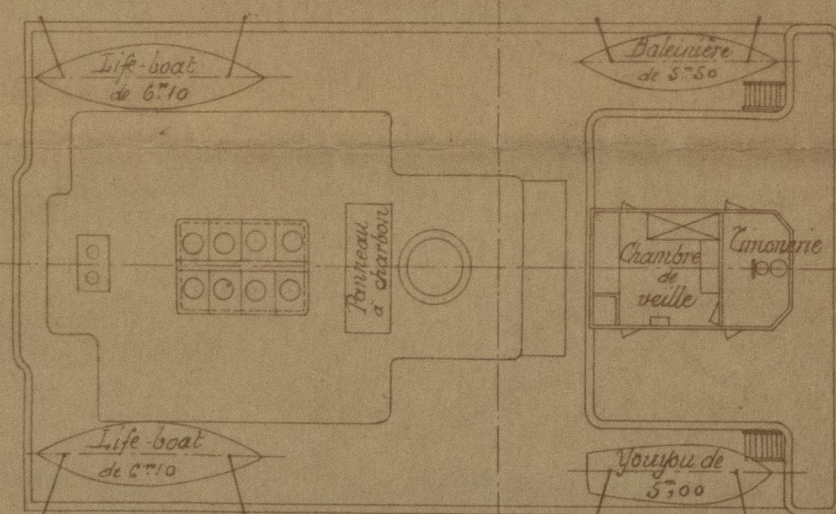


Arrangement of housing
for the crew
as in plan

Planing arrangement
to be submitted

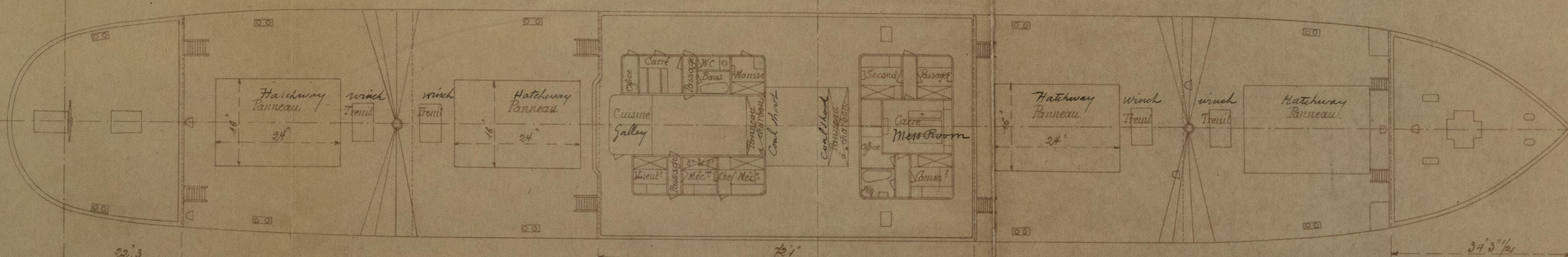
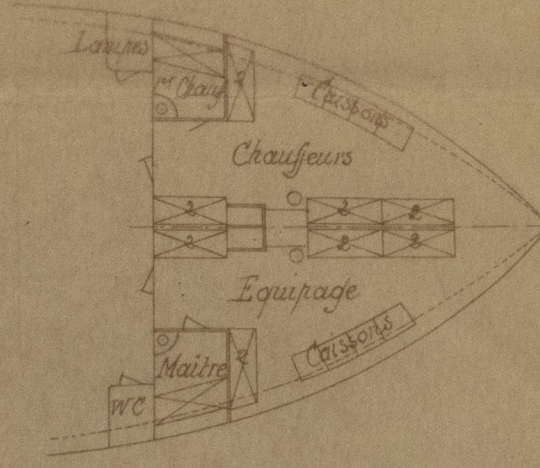
Dimensions principales.

Longueur entre FP	88.00	Length between perp	289.18
Largeur	13.40	Great breadth	44.0
Ceureux	6.50	Depth	21.3
Profondeur de coque	5.30	Draught	17.40

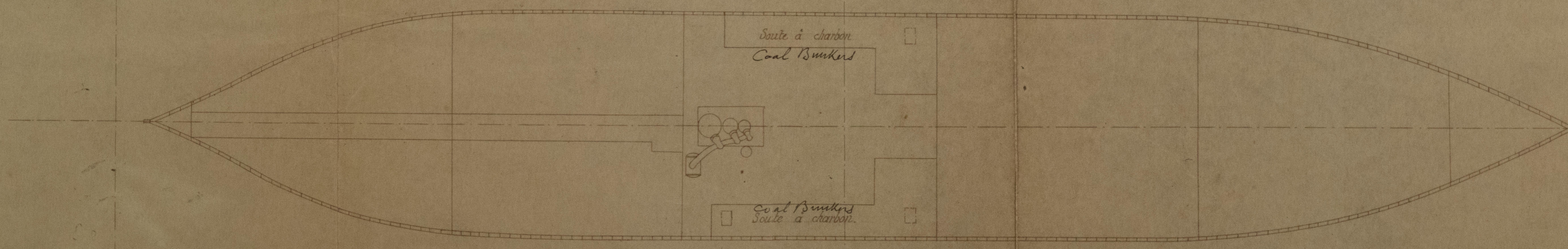


Section in bridge house
Coupe dans les coqs.

Coupe dans la teugue. Section in Forecastle



Deck, Holds



Soute à charbon
Coal Bunkers

Soute à charbon
Coal Bunkers

Chantier de Gravelle, 16.10.1905.

L'Ingénieur en Chef.

[Signature]

C.B.
24.10.05.

2

Lloyd

RETAIN
FORGES ET CHANTIERS
de la Méditerranée
HAVRE

"DEUX - SÈVRES"

Har. 2478
Projet de Cargo boat de 3.600 T.
General Arrangement

Plan des Emmenagements

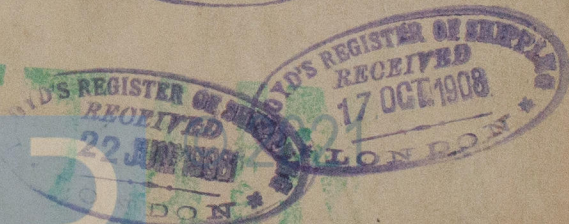
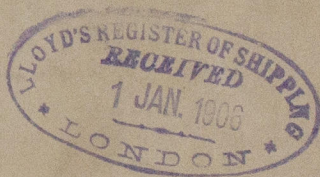
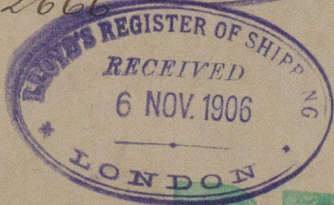
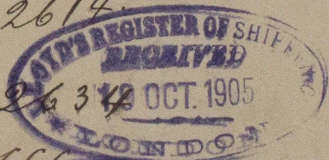
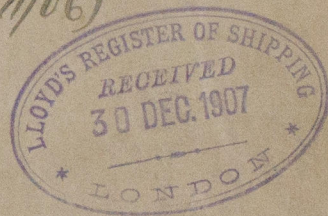
(Four sister ships approved 8/11/06)

S.S. "Indre" Havre 2587.

S.S. "Sarthe" Hav. 2614.

S.S. Mayenne Hav. 2634

S/S. Lovet Hav 2666



Lloyd's Register
Foundation
W611-0054