

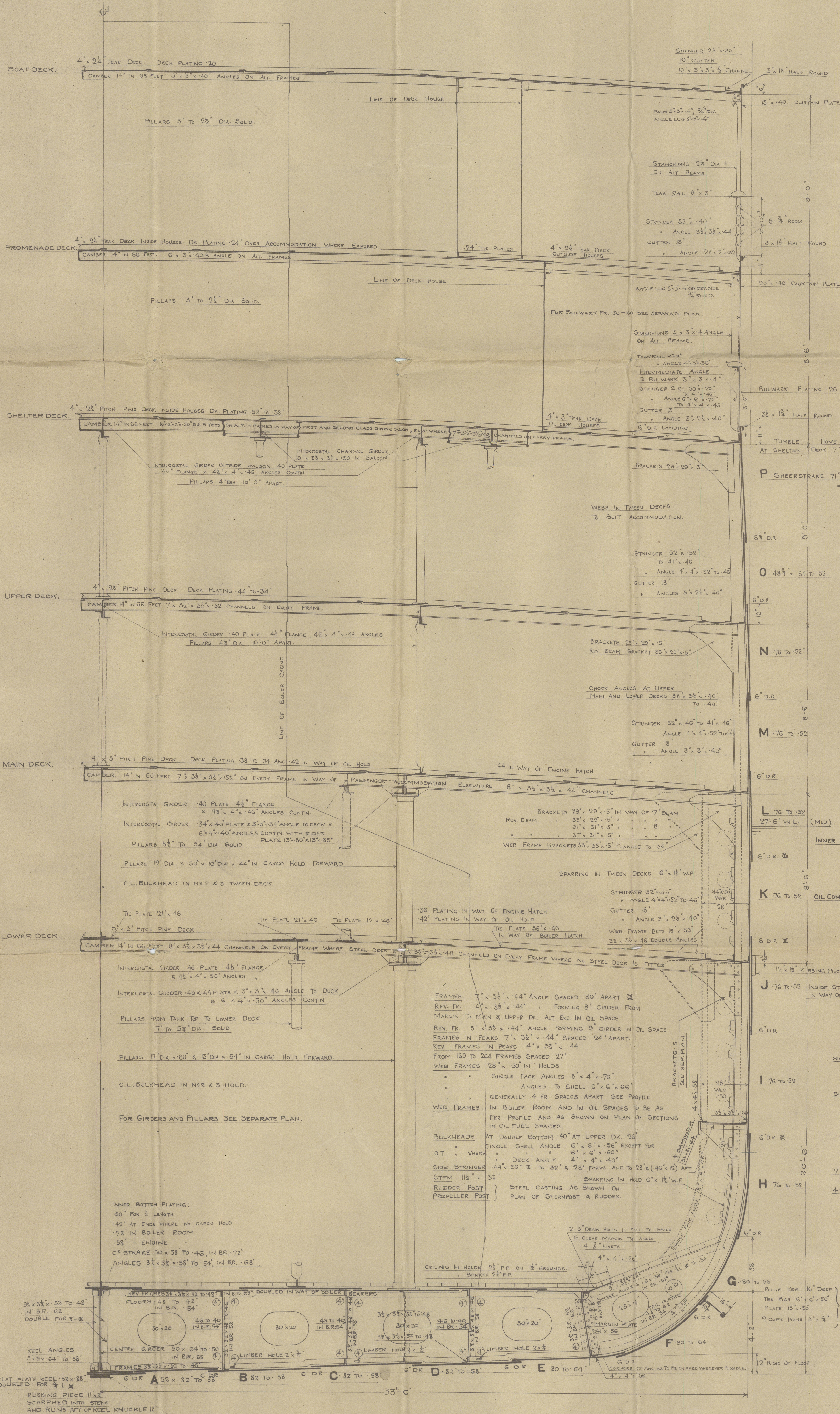
T.S.S. "NIAGARA".

MIDSHIP SECTION.

SCALE $\frac{1}{2}'' = 1 \text{ FOOT.}$

DIMENSIONS 522'-6" x 66'-0" x 37'-6".

TO LLOYD'S 100 AL. SHELTER DK. RULE.



NUMERALS.

TRANSVERSE NUMBER (B + D)	= 66 + (37.5 + 1) = 104.5
LONG. NUMBER	L (B + D) = 522.5 x 104.5 = 54400
$\frac{L}{D}$	= 11.8
d	= 16.333

LONG. NUMBER	54 400
ABOVE SHELTER	1683
" PROM.	1575
" BOAT.	608
UPPER TO SHELTER	3 32
	61738

EQUIPMENT.

NUMERALS	61738
3 BOWIE ANCHORS (HALLS)	STOCKLESS COLL. WEIGHT 298 CWTs
1 STREAM	RODGERS BOX PATTERN EX. STOCK 31
1 KEDGE	" " " " " " 16
330 FATHS. 2 1/8"	STUD. CHAIN CABLE.
120 "	6" STEEL WIRE OR 1 1/8" STREAM CHAIN.
130 "	7" " " " " " " " " " " "
2 AT 100 FATHS.	8" MANILLA
2 " 120 "	8" " " " " " " " " " "

HAWKERS AND WARPS.

RIVETING.

SHELL: KEEL PLATE, SINGLE STRAPS OUTSIDE, TREBLE RV. IN WAY OF DOUBLING. INSIDE, QUAD. ELSEWHERE. DOUBLING, SINGLE STRAPS INSIDE TREBLE RIVETED. "A" & "L" STRAKES, EXCEPTING "J" STRAKE, TO HAVE LAP BUTTS, QUAD RV. FOR 8" L & AND TREBLE RV. AT ENDS. "J" STRAKE IN WAY OF RUBBING PIECE TO BE SHROPPED INSIDE AND QUAD RV. ELSEWHERE TO HAVE TREBLE RV. LAP BUTTS. "M", "N", "O" & "P" STRAKES DOUBLE BUTTSTRAPS, TREBLE RV. FOR 8" L & TO SINGLE INSIDE, QUAD. & TREBLE RV. AT ENDS. LANDINGS, TO BE DOUBLE RV. ALL F & A EXCEPT THOSE MARKED IN WHICH ARE TO BE TREBLE RV. FOR 8" L IN FORE BODY AND 8" L IN AFTER BODY. SKETCH SHOWING TR. LANDINGS TO BE SUBMITTED.

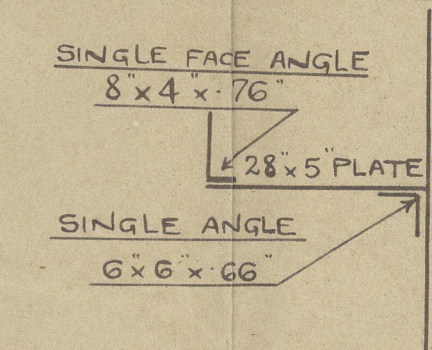
DECK: LOWER DECK STRINGER, TREBLE RV. LAP BUTTS.

MAIN	"	"	"	"	"
UPPER	"	"	"	"	"
SHELTER	"	"	"	"	"
PROMENADE	"	"	"	"	"
BOAT	"	"	"	"	"
LOWER DECK TIES	"	"	"	"	"
PROMEN.	"	"	"	"	"
LOWER, MAIN & UPPER DECK PLATING	"	"	"	"	"
SHELTER DECK PLATING	"	"	"	"	"
PROMEN.	"	"	"	"	"
BOAT	"	"	"	"	"
ALL DECK EDGES	"	"	"	"	"
DECK STRINGERS	"	"	"	"	"
ALSO PLATING OVER OIL SPACE	"	"	"	"	"

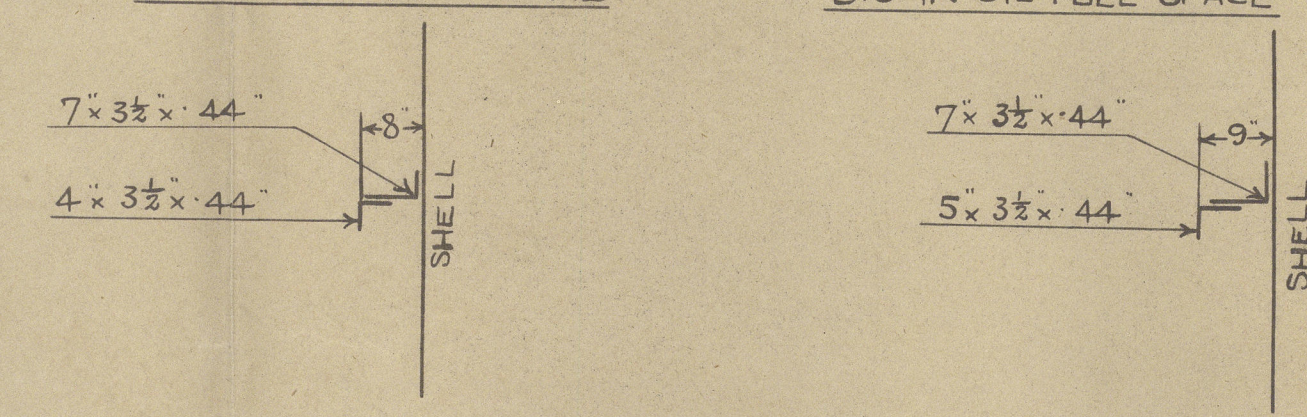
INNER BOTTOM: CENTRE GIRDER, QUADRUPE RIVETED LAP BUTTS TO TREBLE AT ENDS. MARGIN PLATE TREBLE " " " " ALL FORE & AFT. CENTRE STRAKE " " " " " " TO DOUBLE AT ENDS. INNER BOTTOM PLATING " " " " " " EDGES DOUBLE RIVETED.

OIL COMPARTMENT: RIVETING TO BE AS PER SECTION 69. PAR. 10.

SECTION THRO' WEB FRAME



SECTION THRO' FRAME



J. Brown Ho

No 415

Niagara

Co 32426.

Midship Section as built

W61-0166



© 2021
Lloyd's Register
Foundation