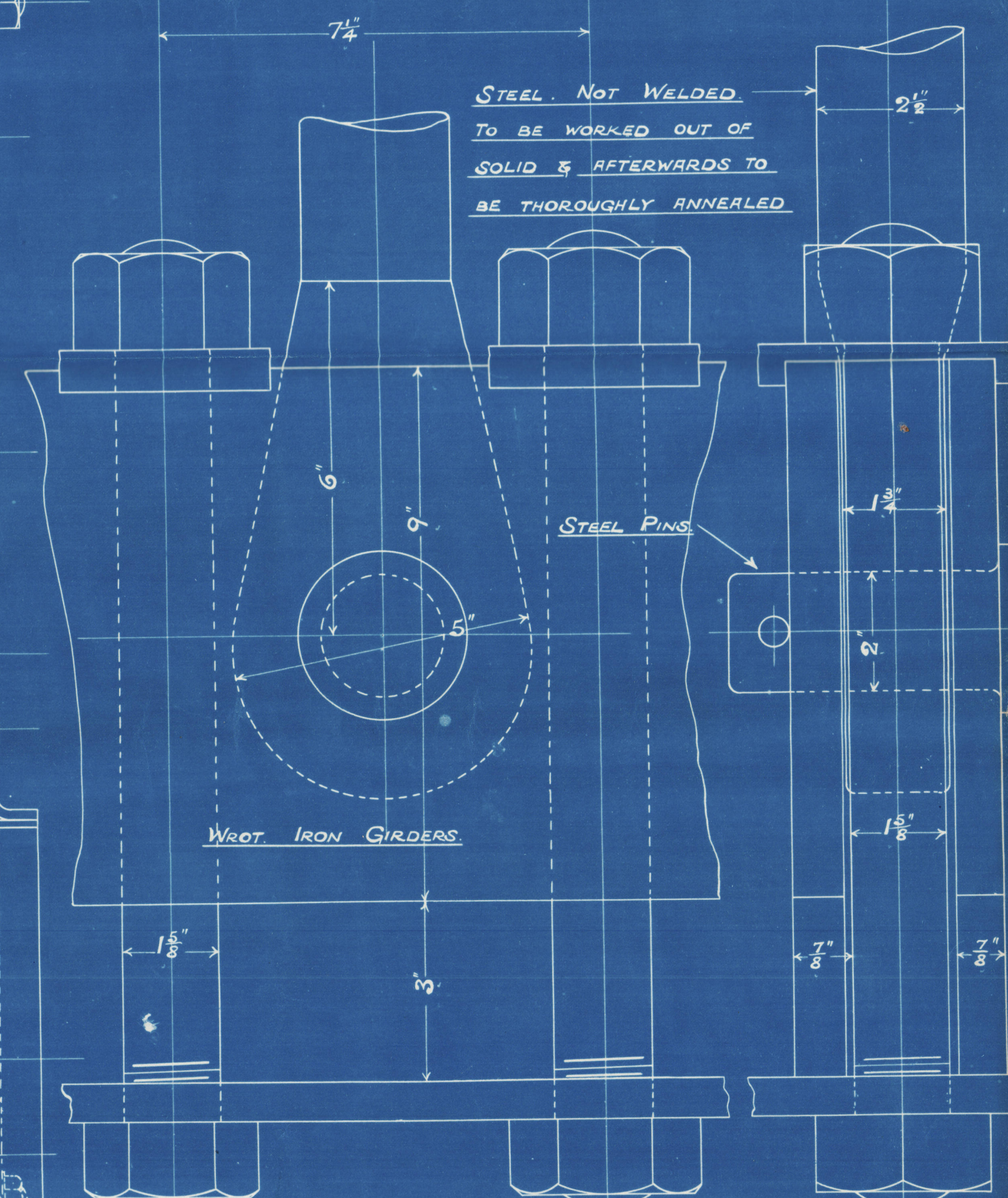


598 ORDINARY TUBES NO 8 I.W.G. —
 162 STAY TUBES 5" 1/4" THICK. —
 STAY TUBES SCREWED 10 THRU PER INCH. —
 122 STAY TUBES "N" 3/8" THICK. NUTTED AT FRONT. —
 8 STAY TUBES "T" 1 1/2" THICK. NUTTED AT FRONT. —
 TOTAL 890 TUBES. WROT IRON. —



STEEL. NOT WELDED.
TO BE WORKED OUT OF
SOLID & AFTERWARDS TO
BE THOROUGHLY ANNEALED.

STEEL F

WROT. IRON GIRDER

— PARTICULARS OF RIVETING



LONGITUDINAL SEAMS. DOUBLE BUTT STRAPS. RIVETED AS SHOWN.

STRENGTH OF PLATE 85%. STRENGTH OF RIVET 87.5%.

CIRCUMFERENTIAL SEAMS. DOUBLE RIVETED AT ENDS AS SHOWN.

" " TREBLE " " CENTRE " "

END PLATES

LAPPED DOUBLE RIVETED $1\frac{1}{8}$ " RIVETS, $3\frac{7}{8}$ " PITCH.
DOUBLE RIVETED, $\frac{7}{8}$ " RIVETS, 3" PITCH. SINGLE RIVETED, $\frac{7}{8}$ " RIVETS, $2\frac{1}{2}$ " PITCH.
ALL PLATES & RIVETS STEEL. ALL HOLES DRILLED IN PLACE.

FURNACES & COMB. CHAMBERS DOUBLE RIVETED, 8 RIVETS,
ALL PLATES & RIVETS STEEL. ALL HOLES DRILLED IN PLACE

MINIMUM TENSILE STRENGTH OF SHELL PLATES 29 TONS PER SQ. INCH.

[illegible][illegible][illegible]

MAXIMUM					26 TONS
MINIMUM					ENDS & C.C. ^{H.R.} PLATES 26 TONS

MINIMUM	0	1	2	3	4	5	6	7	8	9	10	11	12	13	14	15	16	17	18	19	20	21	22	23	24	25	26	27	28	29	30	31	32	33	34	35	36	37	38	39	40	41	42	43	44	45	46	47	48	49	50	51	52	53	54	55	56	57	58	59	60	61	62	63	64	65	66	67	68	69	70	71	72	73	74	75	76	77	78	79	80	81	82	83	84	85	86	87	88	89	90	91	92	93	94	95	96	97	98	99	100
MAXIMUM	0	1	2	3	4	5	6	7	8	9	10	11	12	13	14	15	16	17	18	19	20	21	22	23	24	25	26	27	28	29	30	31	32	33	34	35	36	37	38	39	40	41	42	43	44	45	46	47	48	49	50	51	52	53	54	55	56	57	58	59	60	61	62	63	64	65	66	67	68	69	70	71	72	73	74	75	76	77	78	79	80	81	82	83	84	85	86	87	88	89	90	91	92	93	94	95	96	97	98	99	100

WORKING PRESSURE **215** LBS. PER SQ. INCH.

430

TEST

— 3. OFF. —

— D. E. MAIN BOILER, N^o 418.

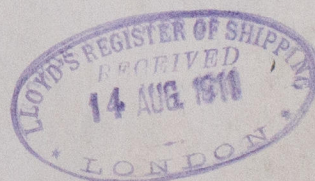
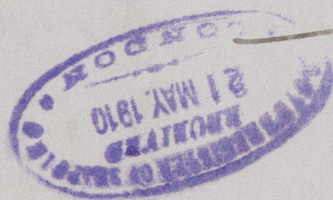
UNDER SURVEY OF BOARD OF TRADE & LLOYDS.

SCALE 1" = ONE FOOT.

16-5
498

RIVETS IN FURNACES & COMB
CHAMBERS TO BE FINISHED THUS

Belfast
Howland & Walley
468
Jas. W. Demosthenes.
Double End Vailers
Bel 6973



RETAIN



© 2021

Lloyd's Register
Foundation

W627-0154