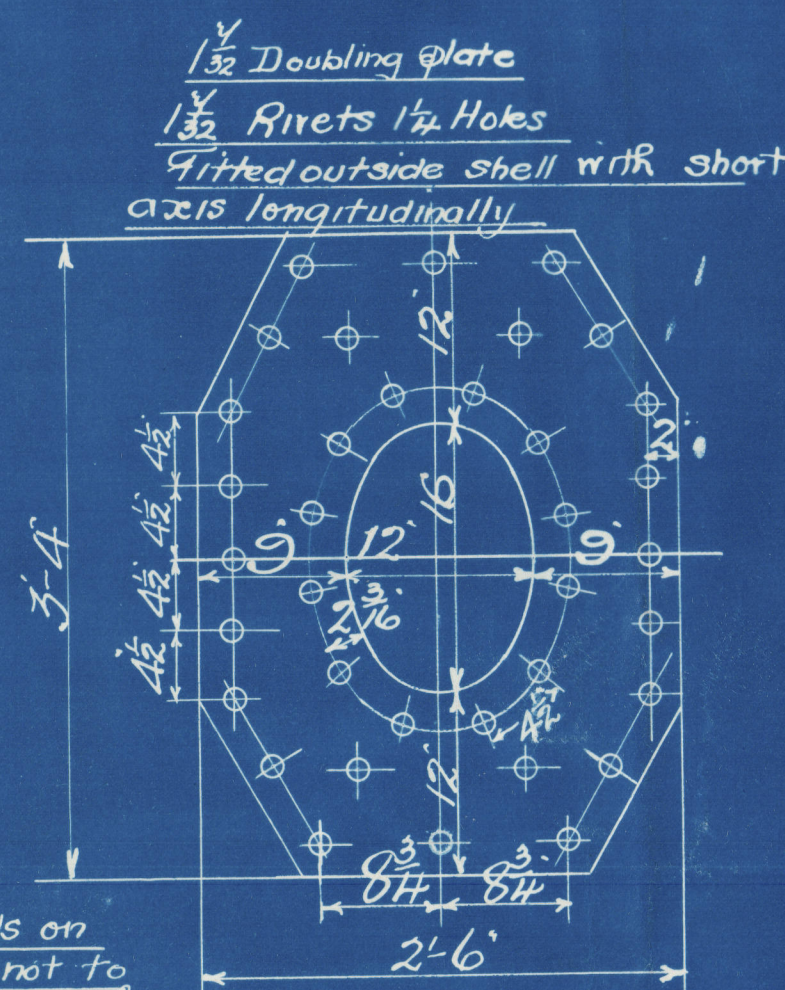


Dia. of Boiler 14'-0" Inside  
 Length of do 10'-6"  
 Number of Tubes 202.  
 Length of do 6'-8" between plates  
 Dia. of do 3 1/2" Area thro Tubes 10'-42 1/2"  
 Heating Surface in Tubes 1234  
 Total Heating Surface 1628 1/2  
 Fire Bar Surface 5'-0" Bars 48.75 #  
 Dia. of Safety Valves  
 Cubic feet of Steam space 350 Cubic feet. (6' above C.C.)  
 Working Pressure 200 Lbs Lloyds.

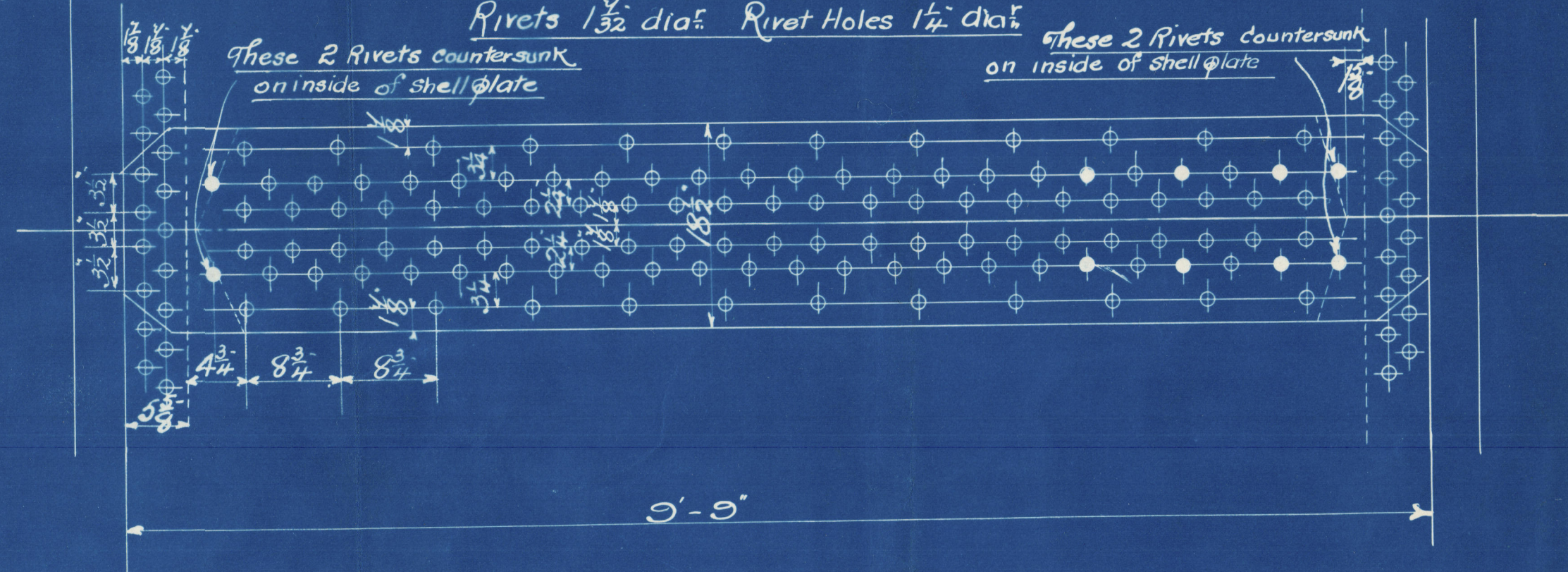


Note: Studs on  
 Manhole doors are not to  
 project through nuts when  
 nuts are nipped up.

Circumferential Seams  
 1/32 Rivets 1 1/4" dia. hole  
 % plate 64.3.  
 % Rivet 48.9.

Longitudinal Seams  
 1/32 Rivets 1 1/4" dia. holes  
 % plate 85.6.  
 % Rivet 88.58.

Double butt Straps 1/32 thick outside, 1/32 thick inside  
 Rivets 1 1/2" dia. Rivet Holes 1 1/4" dia.

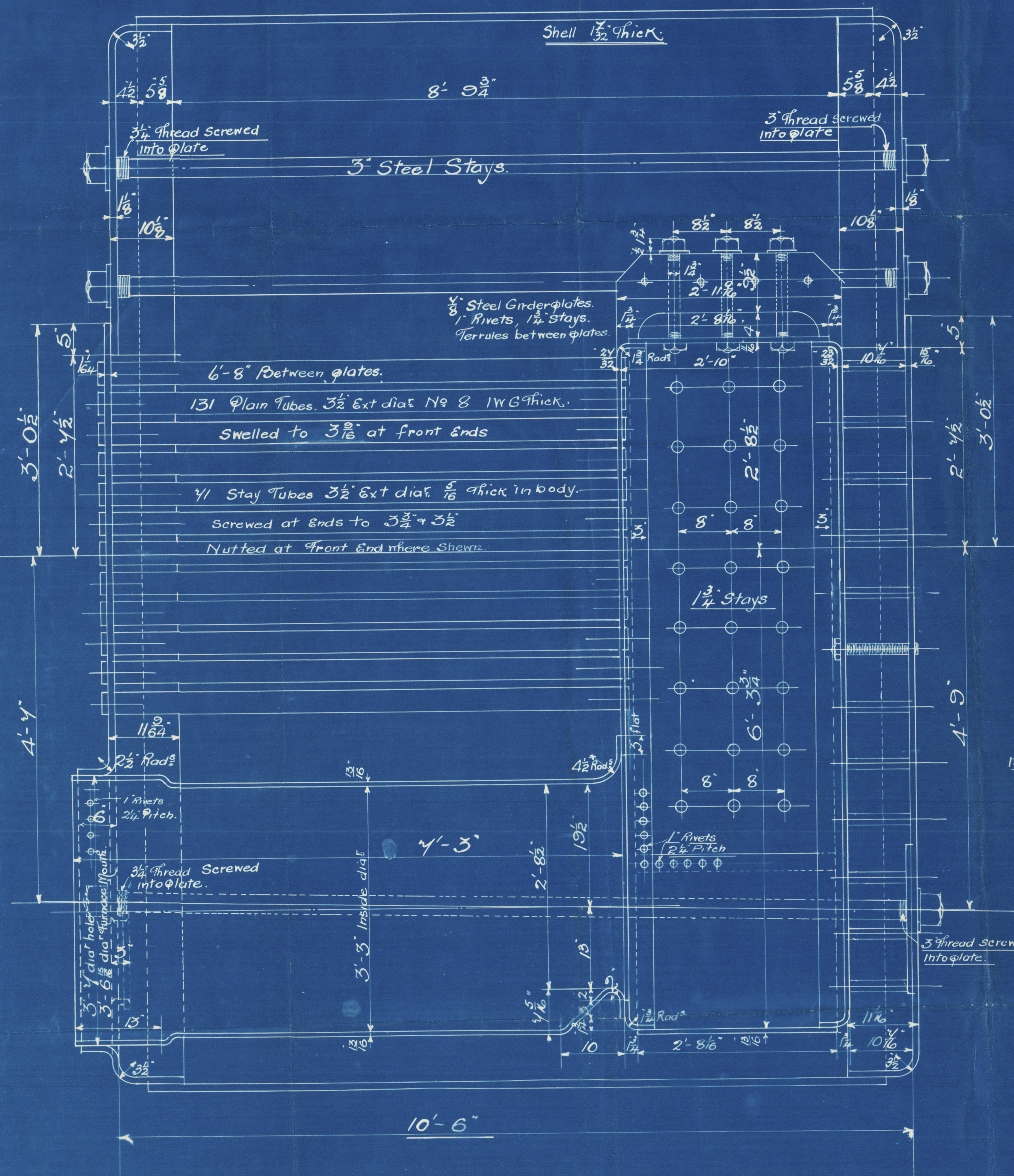
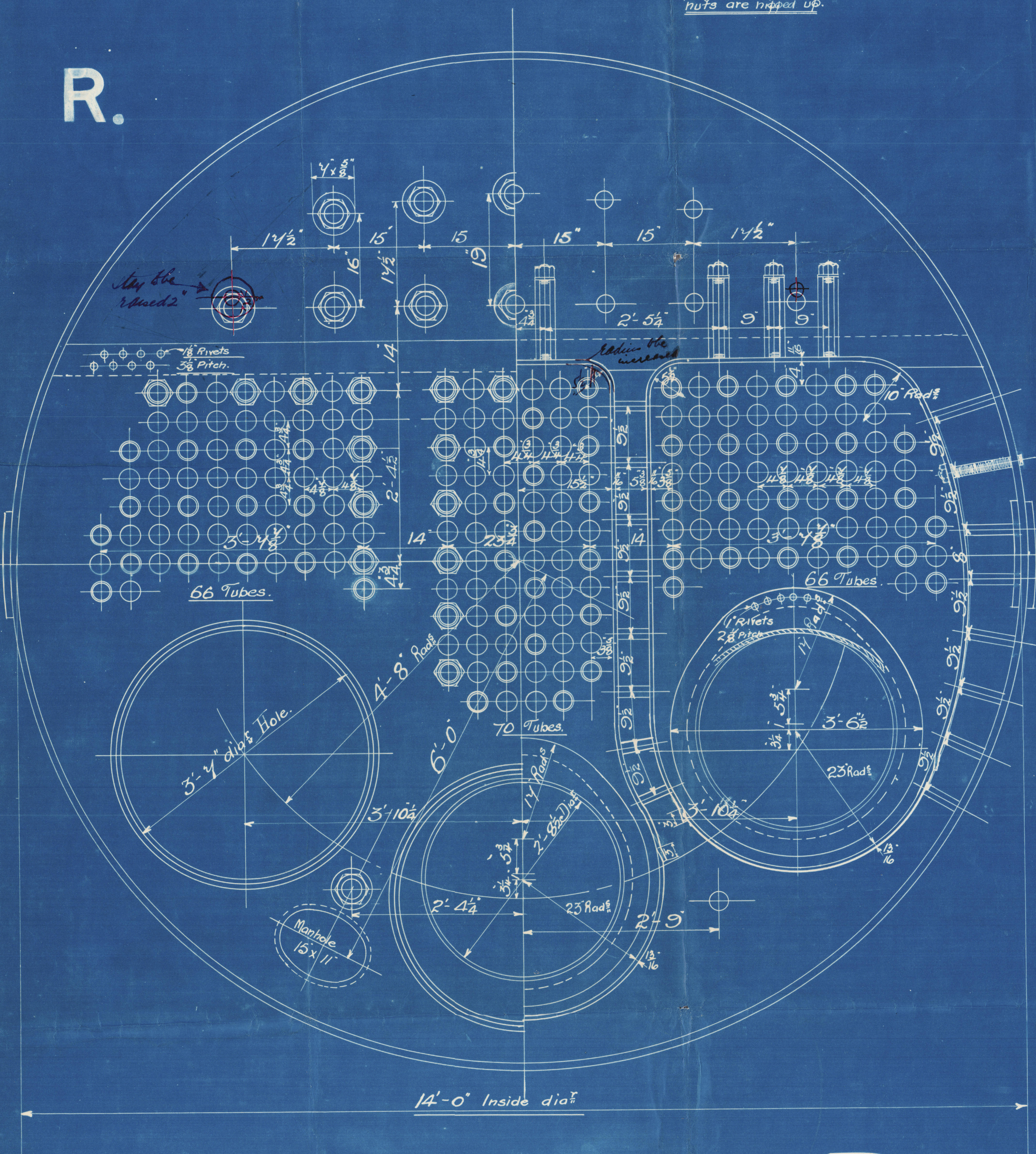


Note: The plates, rivets & stays of Steel by the Siemens Martin process.  
 All rivet holes drilled throughout the boiler. Those in shell  
 after the plates are bent.  
 All Flanged Plates to be annealed after the plates are bent.  
 Stays are not to be welded. Tubes are of iron.  
 The Tensile strength of the shell plates & butt straps  
 to be between 28 & 32 tons per sq inch.  
 The Combustion Chamber stays are screwed into both plates.  
 No Washers inside Combustion Chamber.

Particulars of Staying

Stay	Dia.	Threads per inch	Stiff area at bottom of thread
Steam Space Stays.	3"	6	6.10 dia.
Bottom Stays	3"	6	6.10 dia.
C.C. Stays	1 1/2"	10	2.066 dia.
Stay Tubes.	3 1/2"	9	2.364 dia.

R.



Marginal Stays to be  
 putted outside.

Care to be taken that  
 C.C. Stays are sufficiently  
 clear of the round that full  
 nuts can be got upon the flat  
 plate.

24" Doubling plate  
 1" Rivets 6" pitch

Pattern of stays to be  
 made & 2 added fitted.  
 Also doubling the outside.

AMOS & SMITH LTD  
 ENGINEERS  
 ROBERT DOCK WORKS  
 HULL

JSM  
 25/1/11  
 25/1/11

STEEL BOILER N° 1959

TITLE Steel Boiler  
 FOR WHOM City S. & Co. Ltd  
 DATE 20/1/11  
 ORDER No 1959  
 IF MADE  
 SCALE 1" = 1 foot.

10312.



© 2021  
From AMOS & SMITH, Ltd., HULL.

Enclosure for

Messrs Lloyd's Surveyors  
Hull

W607-0128 1/2

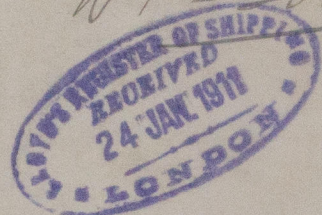
Length of do



Amos Smith

Boiler No 1959

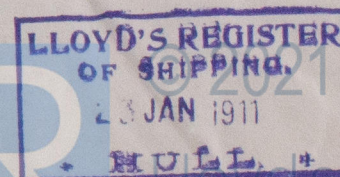
WP = 200 lbs



s/s 'Drypool'  
Hull Report No 24460

RETAIN

W 607-0128



Lloyd's Register  
Foundation