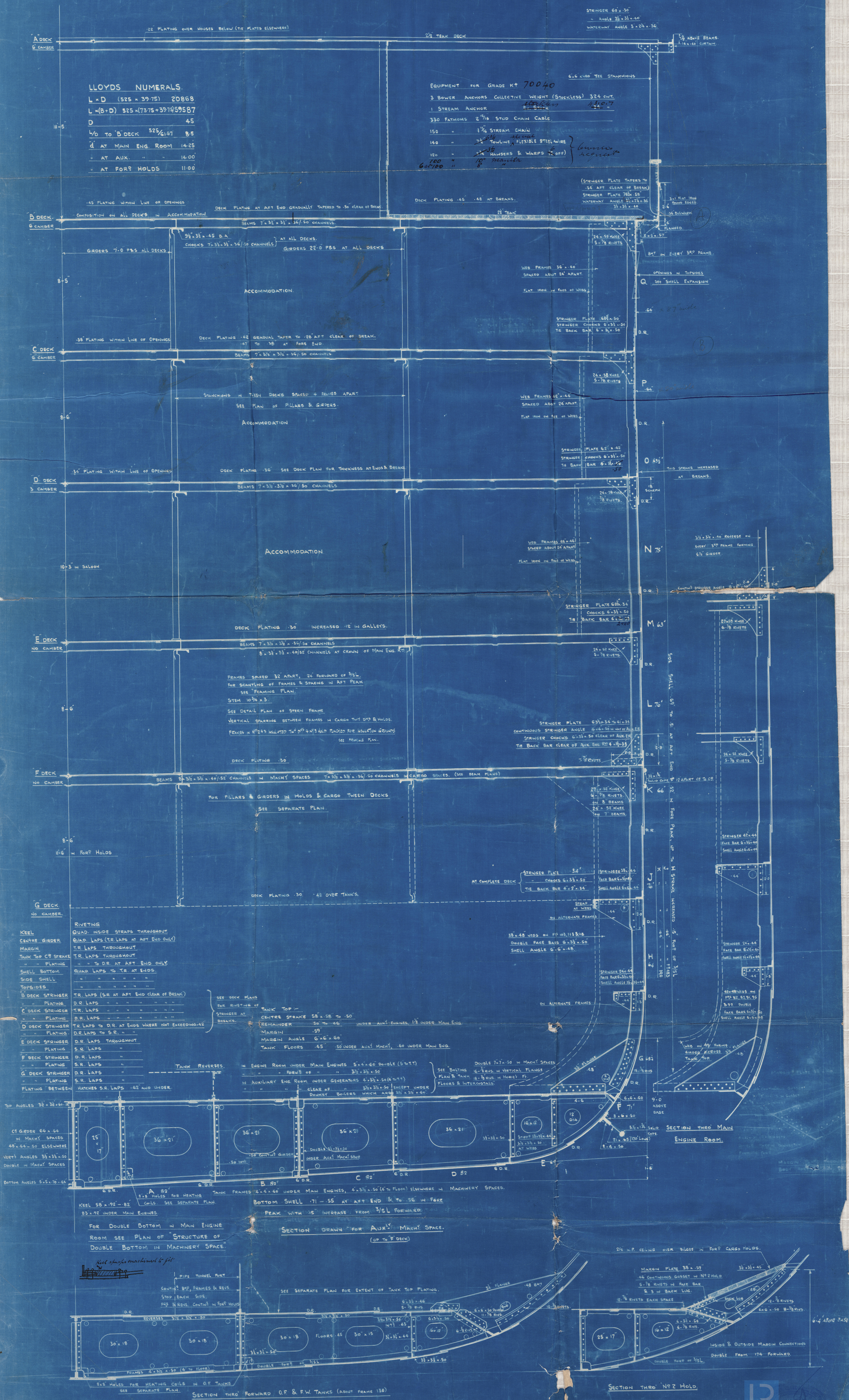


DIMENSIONS:- 525'-0" x 73'-9" M^{LD} x 45'-0" TO "D" DECK.

TO CLASS 100 A.I. WITH FREEBOARD CORRESPONDING TO A DRAFT OF 26'-9" B.K.



①

Section
as built

N^o 490

Workman to Lark & C
Belmont

Q.M.V. "BERMUDA"

Rept. N^o

RETAIN

W606-0071



© 2020

Lloyd's Register
Foundation