

18.3.03
8.4.03
9.1.04

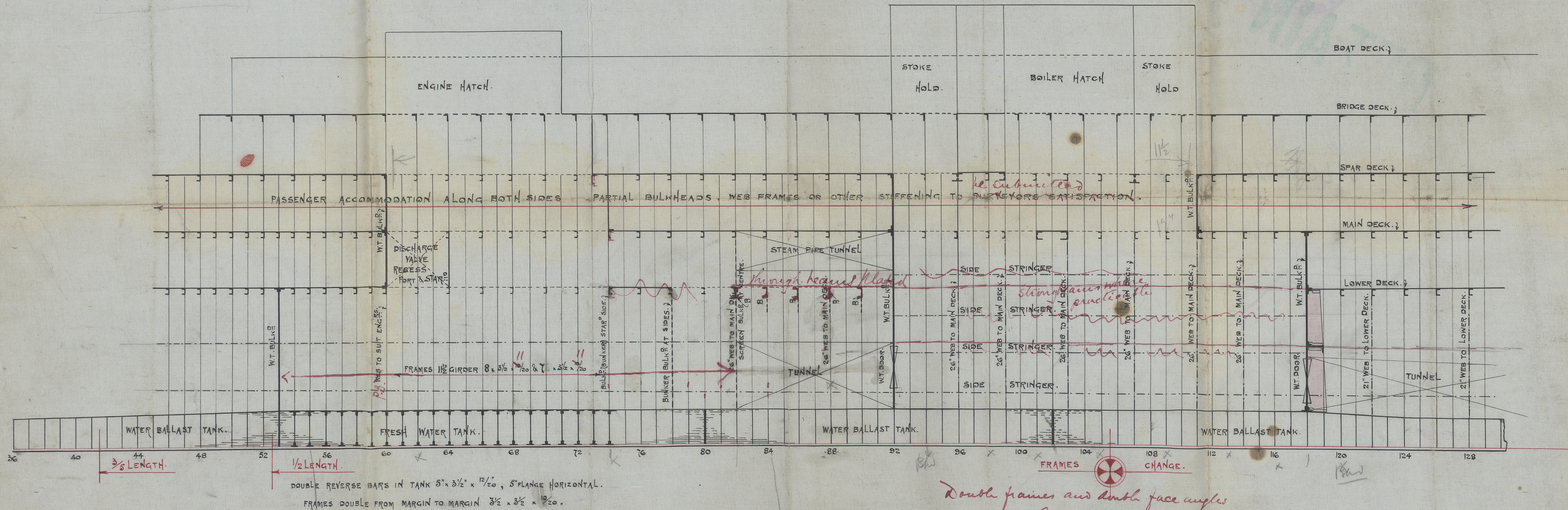
— LLOYDS PROFILE —

— TWIN SCREW STEAMER. — No 403

— 460' 0" x 55' 6" x 36' 0". —

SCALE $\frac{1}{8}$ " = ONE FOOT.

— AMENDED E & B SPACE. —



Alex. Stephen & Sons Ltd.,
SHIPBUILDERS & ENGINEERS,
GLASGOW

DRAWING NO 2682

MARCH 13TH 1903.

A. Stephen Lemo.

T-S/S. N° 403.

457.96 x 55.24 x 29.19.

People in Machine
Space

Port Kingston

Gls report No 21986



© 2021

Lloyd's Register

W605-0209