

PARTICULARS TO BE ENTERED IN REGISTER BOOK.

J. S. S. "Port Kingston"

REFRIGERATING MACHINES.

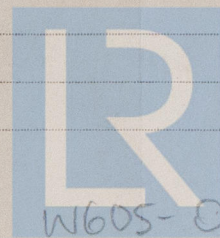
| No. and whether Single or Duplex. | Makers. | Date of Construction. | System. | Type. | System or (1) Refrigerating (2) Insulating the Chambers. | POWER. | | INSULATED CARGO CHAMBERS. | |
|-----------------------------------|------------------------------------|-----------------------|-----------------------|-------------------|---|---------------------------------------|------------------------------------|---------------------------|---------------------|
| | | | | | | Cubic feet of air delivered per hour. | Ice melting capacity per 24 hours. | No. | Capacity. |
| <i>One Duplex</i> | <i>J. & Hall L^d</i> | <i>1904</i> | <i>CO₂</i> | <i>horizontal</i> | <i>Brine grid pipes forming air coils granulated cork</i> | <i>—</i> | <i>—</i> | <i>6</i> | <i>122,000 cft.</i> |

Fee £ : : { Fee applied for, 190
 Travelling Expenses £ : : { Received by me, 190

Arthur L. Jones
 Surveyor to Lloyd's Register.

Committee's Minute

Assigned



© 2021

Lloyd's Register
 Foundation

W605-0194