

DIMENSIONS.	
LENGTH OF FIRE BARS	5'-0"
AREA OF FIRE GRATE	56 sq
DIAM OF TUBES OUTSIDE	3 1/2"
LENGTH OF TUBES	6'-6 1/2"
Nº OF TUBES	176
SURFACE OF TUBES	1030 sq
TOTAL HEATING SURFACE	1350 sq
WORKING PRESSURE	200 LB
DIAM OF SAFETY VALVE	

PARTICULARS OF RIVETING

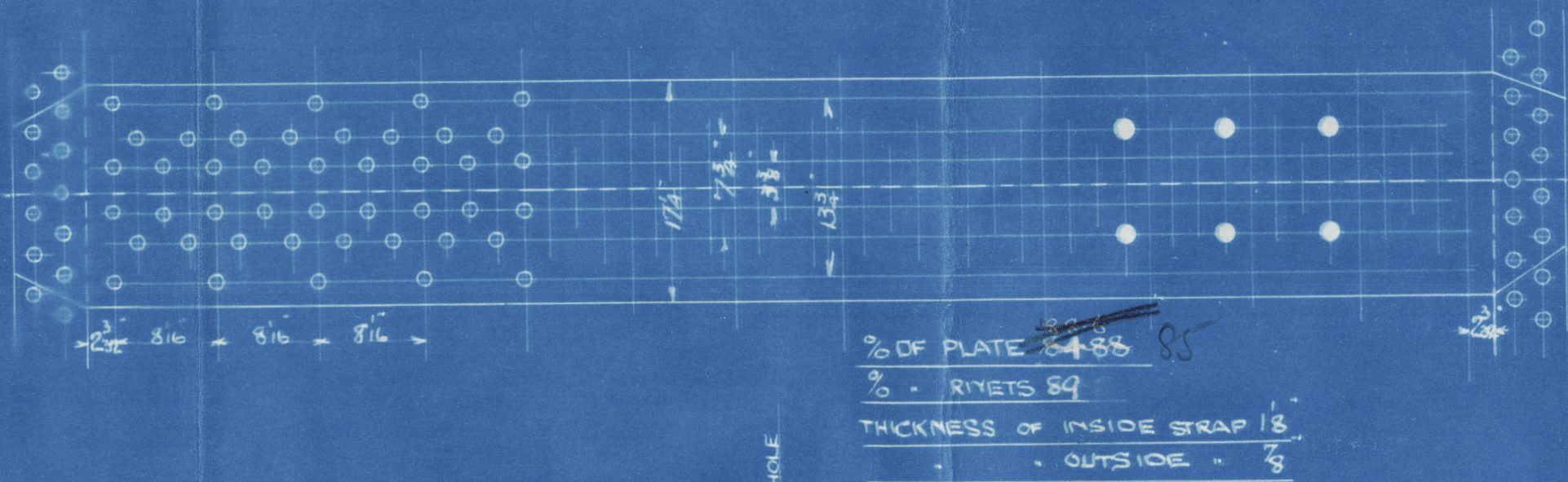
LONGITUDINAL JOINTS - TO BE TREBLE RIVETTED DOUBLE BUTT JOINTS
 HOLES DRILLED 1 1/8" DIA. 8" PITCH

CIRCUMFERENTIAL JOINTS - TO BE DOUBLE RIVETTED LAP JOINTS
 HOLES DRILLED 1 1/8" DIA. 3 1/2" PITCH

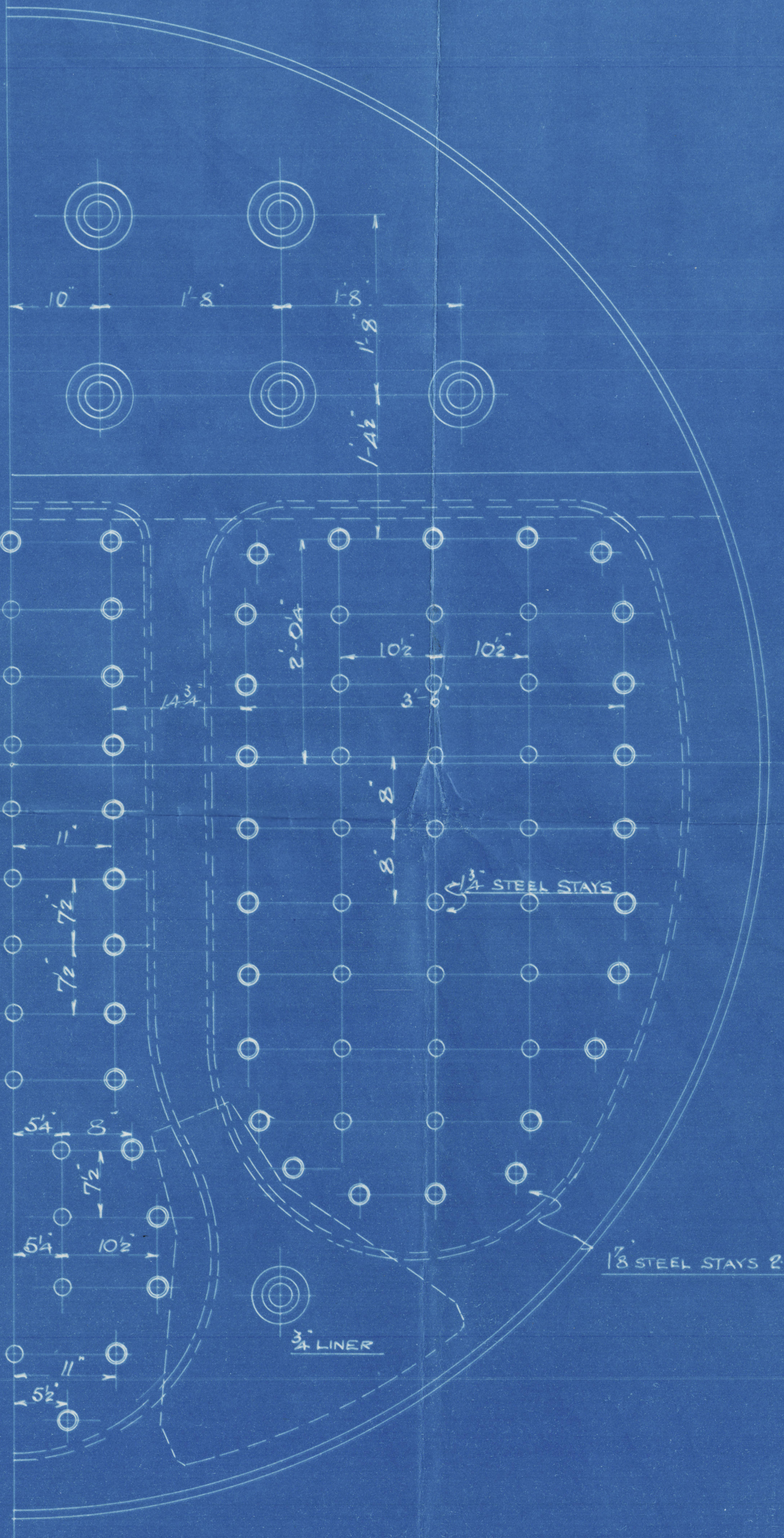
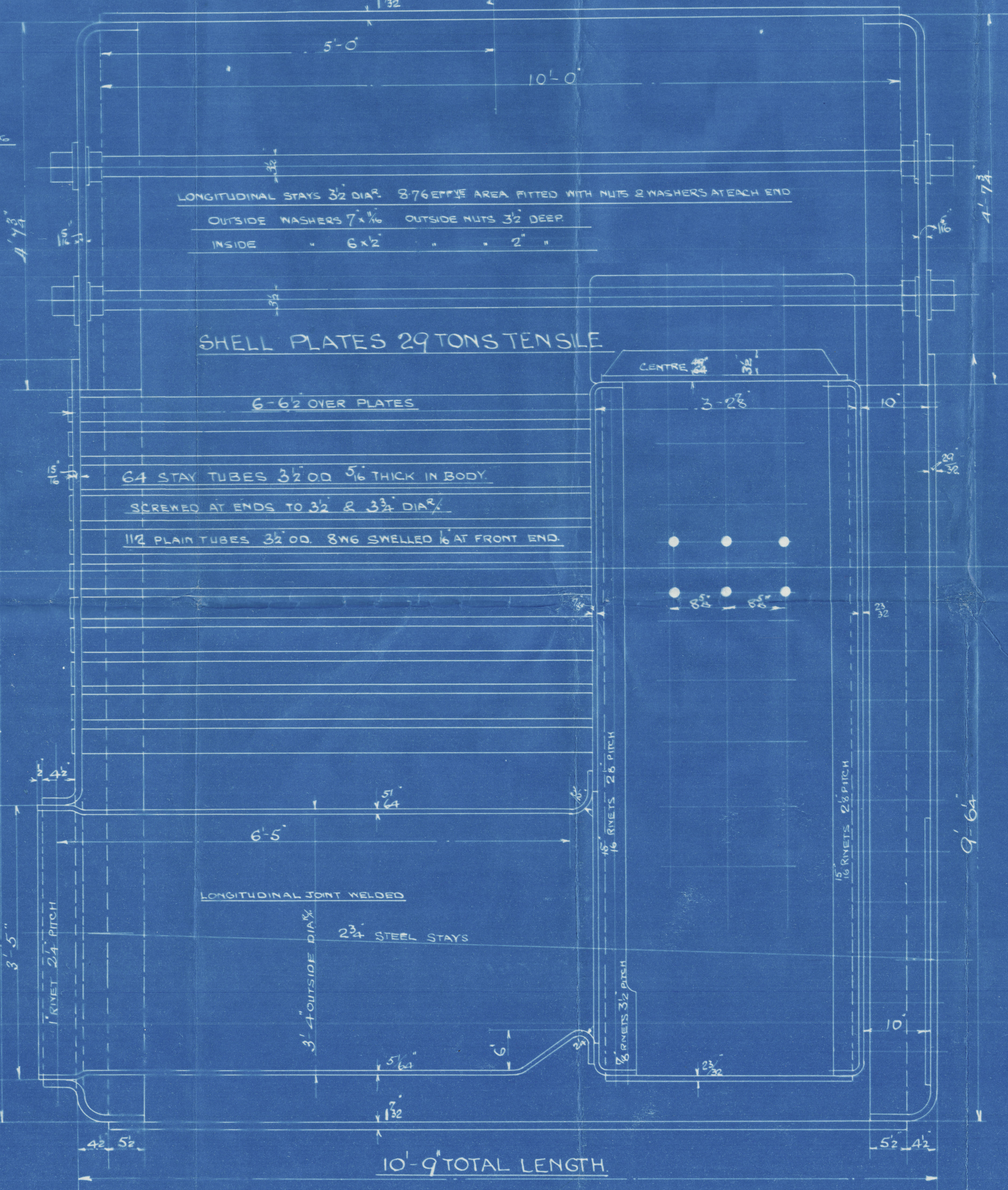
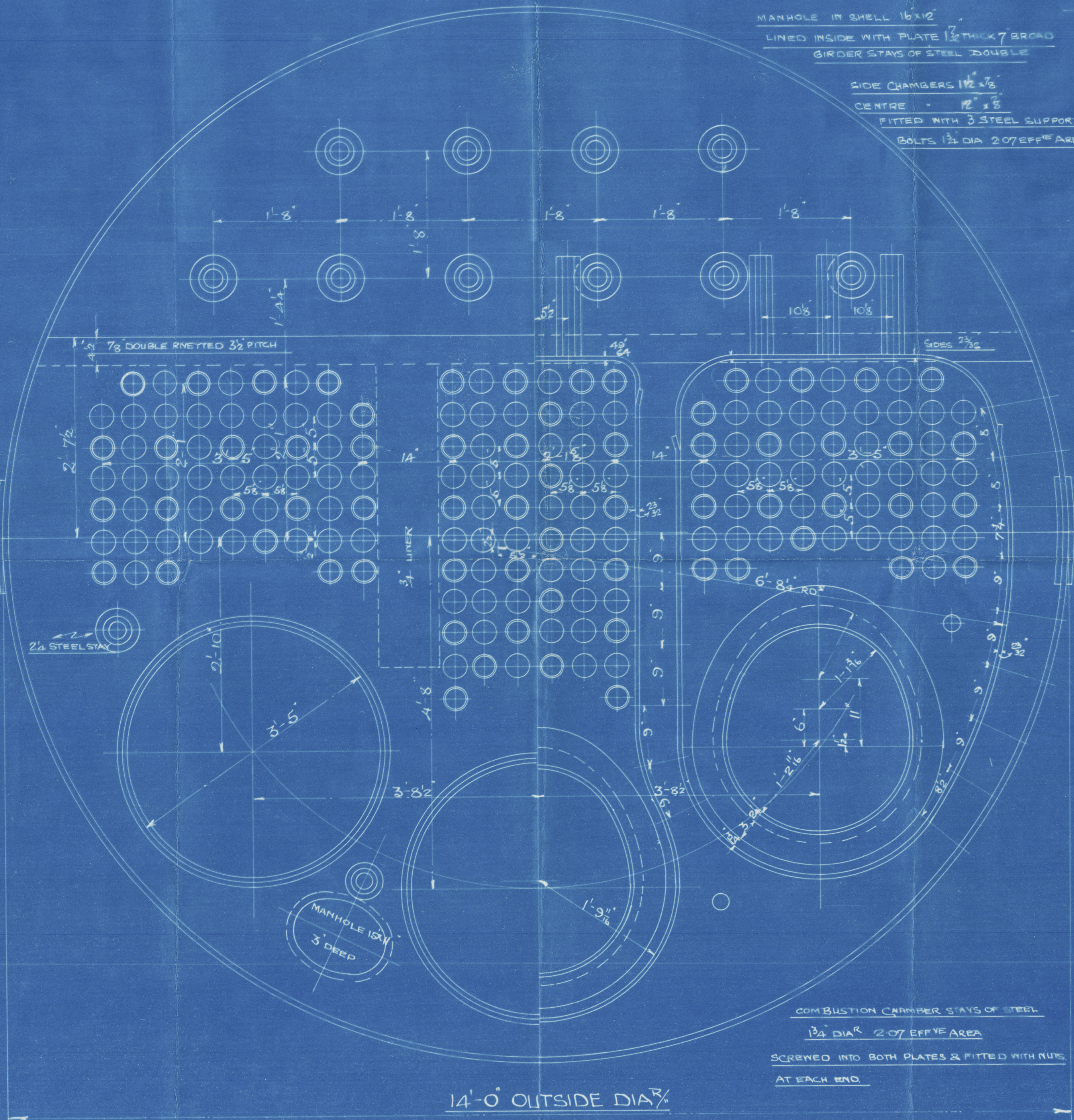
FURNACES - SINGLE RIVETTED FRONT & BACK
 COMB. CHAMBER - SINGLE RIVETTED EXCEPT BOTTOM OF

TUBE PLATE WHICH IS TO BE DOUBLE RIVETTED

CROSS SEAMS - TO BE DOUBLE RIVETTED



11/1/13



PLAN Nº 2806

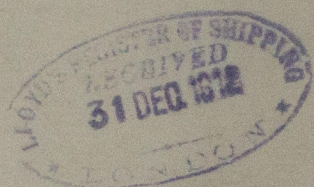
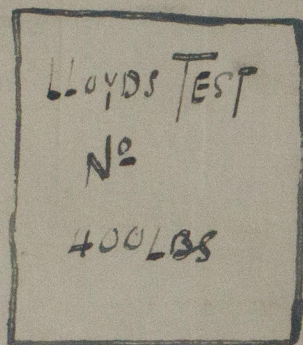
STEEL BOILER Nº 1019

CHARLES D HOLMES & CO LTD
 ENGINEERS & BOILER MAKERS
 HULL

MESSRS CHARLES D. HOLMES & Co. Ltd.

Nº 1019

WORKING PRESSURE 200 LBS.



J. Marleau

Hull Report No. 26958.

RETAIN



W605-0166

