

262.23

STEEL BOILERS

To Lloyds requirements for a working pressure of 180 lbs per sq inch & a Test pressure of 320 lbs per sq inch.
All plates, Rivets, Stays & Girders of steel. Tubes of Wrot Iron.

SCALE = 1 INCH = 1 FOOT

H. W. DICKINSON & SONS, LIMITED
ENGINEERS
TRADING NO. 8609
DATE 15.2.23
SUNDERLAND, ENGLAND

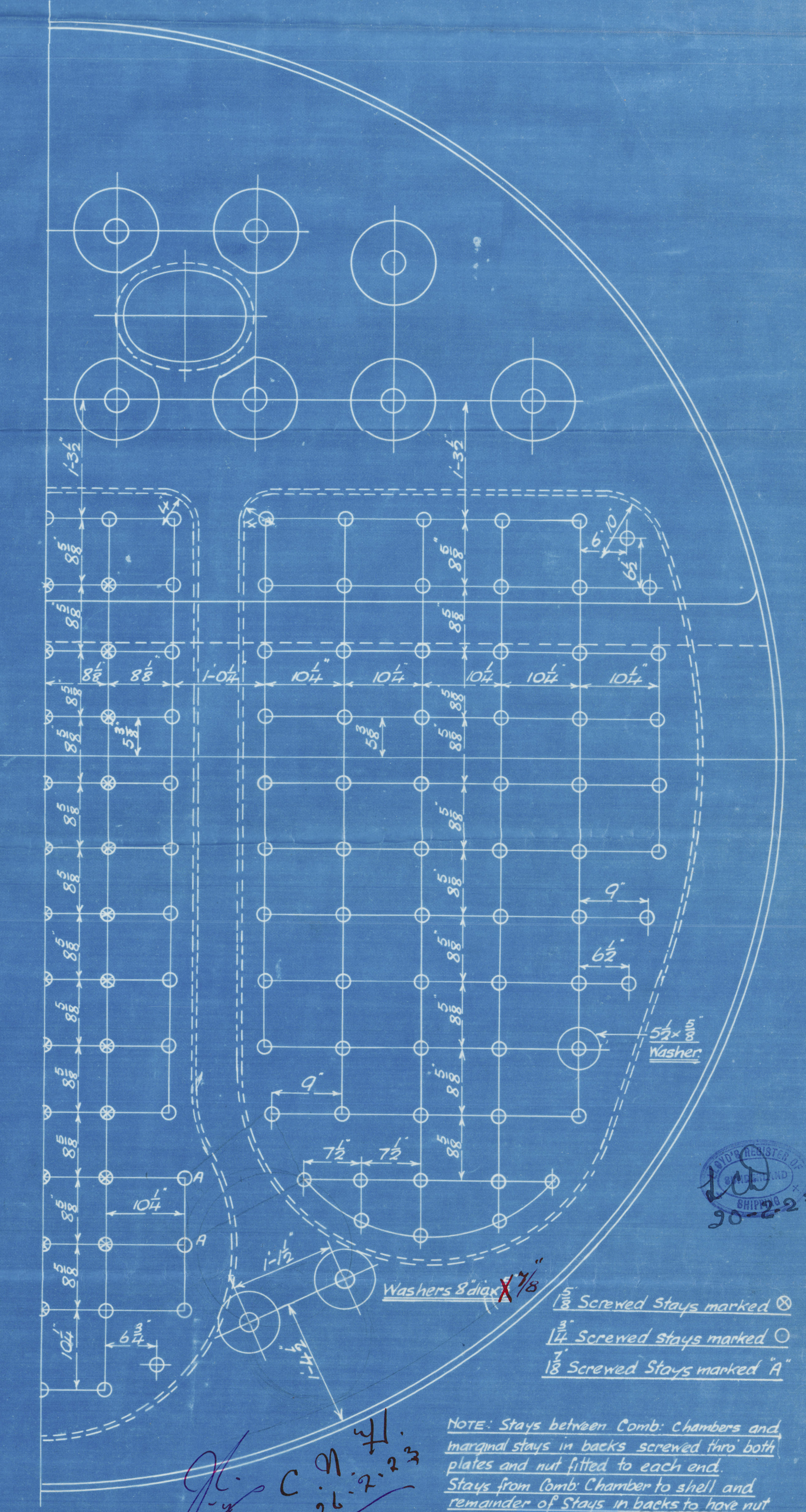
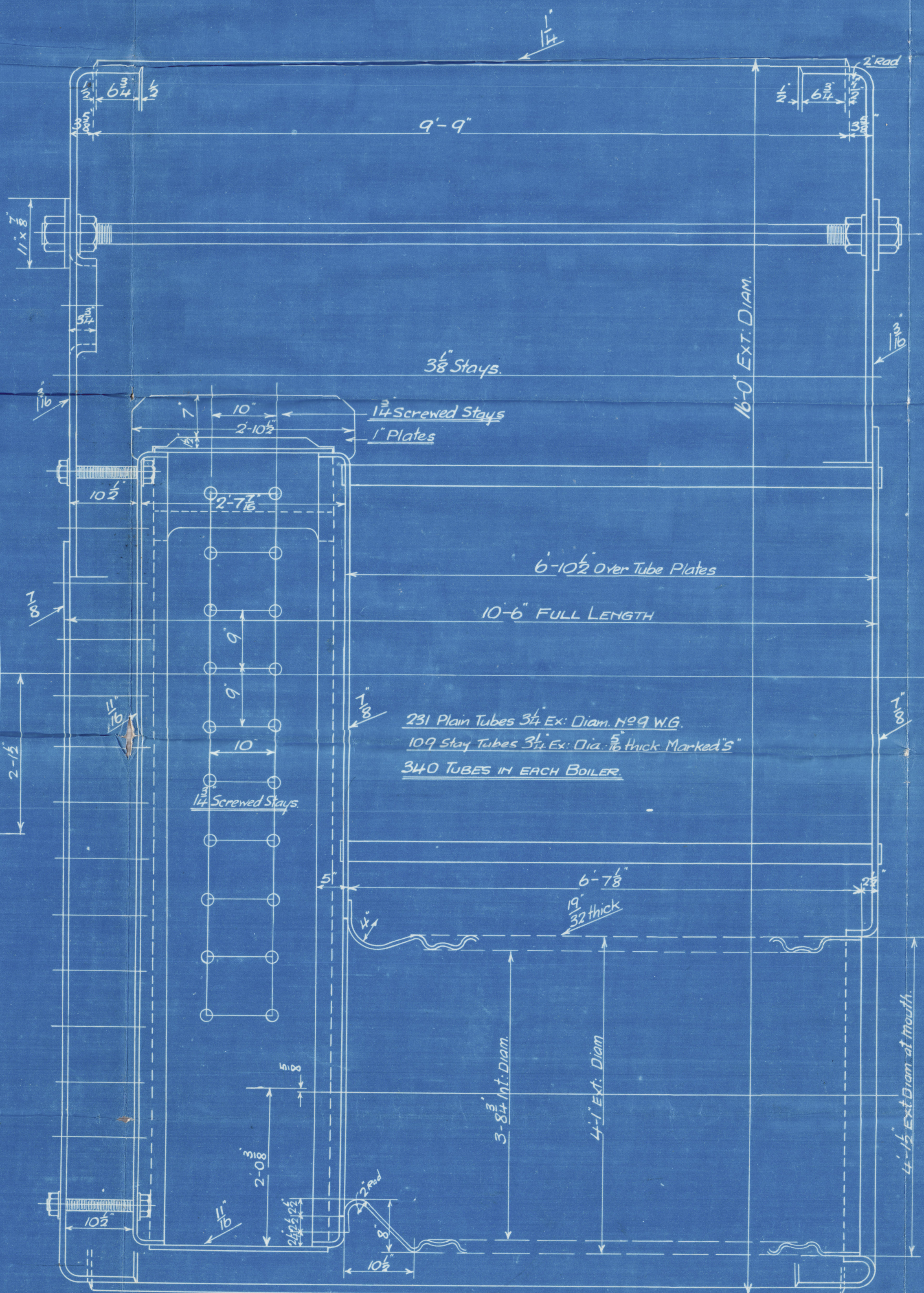
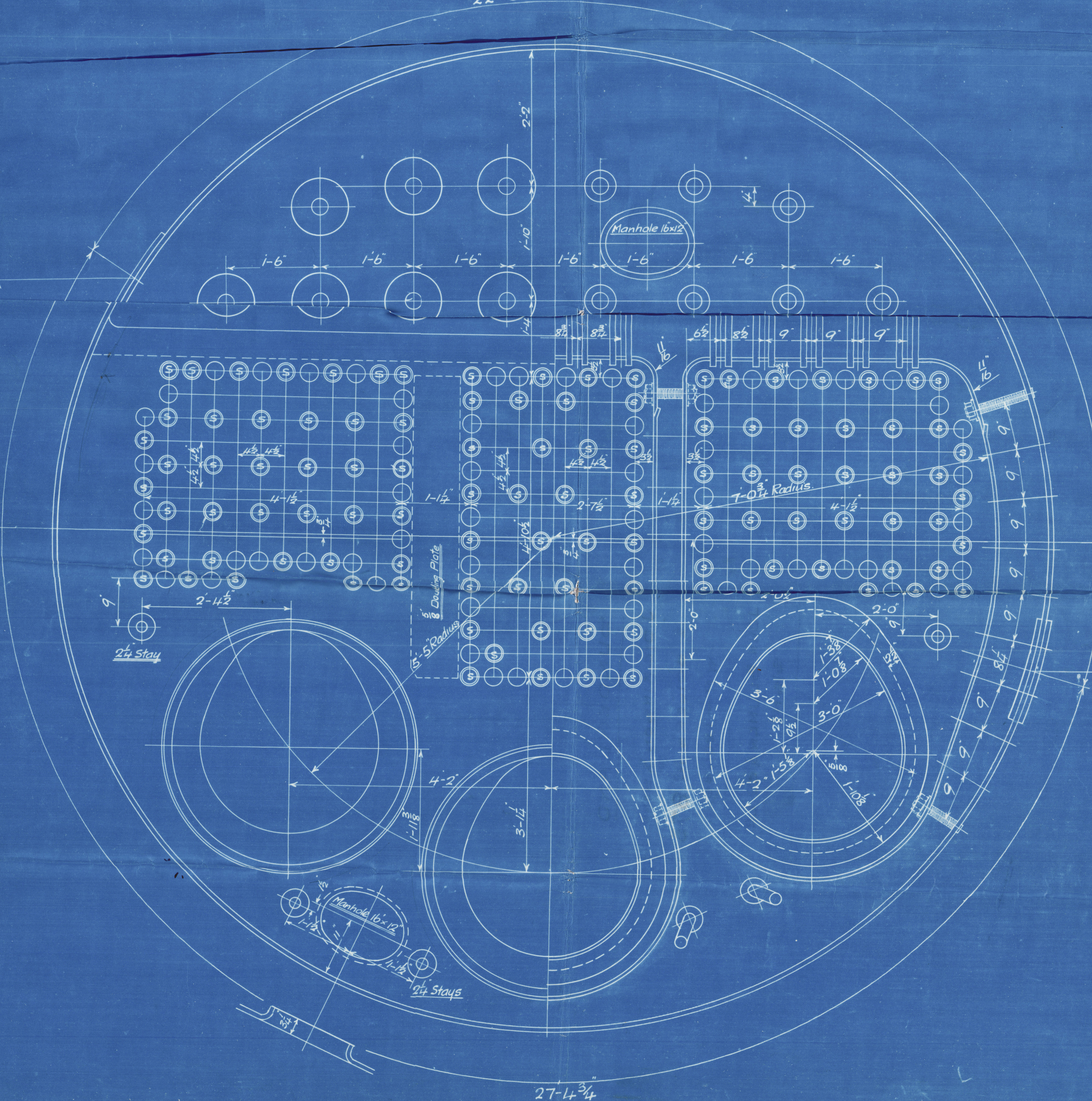
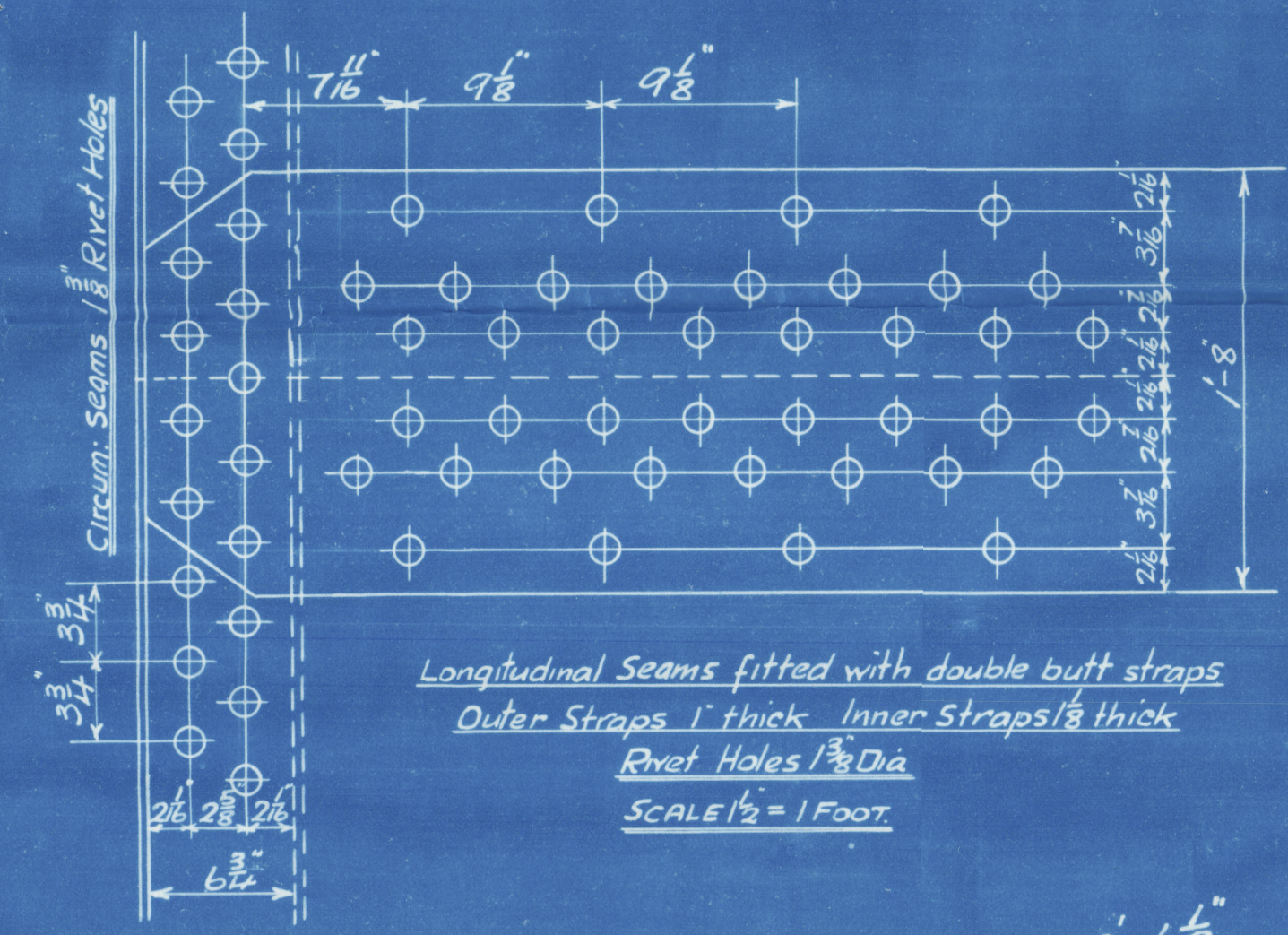
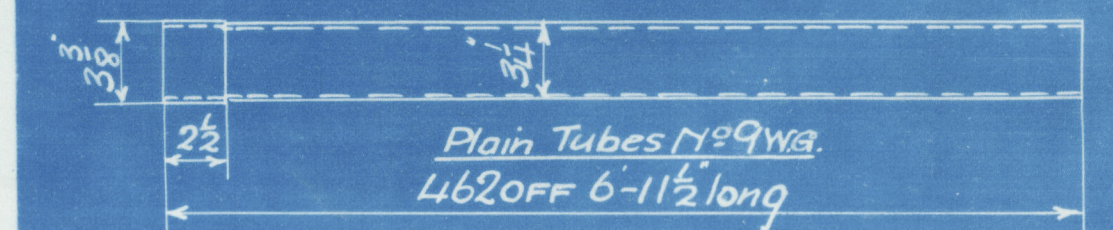
Total Heating Surface in
2 Boilers = 4690 sq ft

TENSILE STRENGTH	
Plate	Tons per sq inch
Shell Plates & Butt Straps	29½ to 33
Combustion Chamber Girders	28 to 32
All other plates	26 to 30

RIVETTING			
Position	Rivetting	Rivet Holes	Pitch
Front & Back Seams	Double	1 1/16	3 1/2
Comb. Chamber Longitud. Seams	Single	1 1/16	2 1/2
Comb. Chamber & Furnace Seams	Single	1 1/16	2 1/2

ENGINE	DATE	FURNACES
S732 OFF	Feb 13 1923	Deighton Section.

STAYS					
Tensile Tons/sq in	Diam	Thru Diam	Eff. Area	Eff. Area	NIP in
26	1 1/8	9	1.48	1.73	34
30	1 1/8	9	1.6078	2.031	272
30	1 1/8	9	1.7327	2.355	4
28	2 1/4	6	2.0366	3.25	6
32	3 1/8	6	2.9128	6.7	14



C. M. 41.
26.7.23

SUNDERLAND

J. DICKINSON & SONS LD

(2) BOILERS NO 873

WP = 180 LBS

JOHN. BLUMER & CO LD

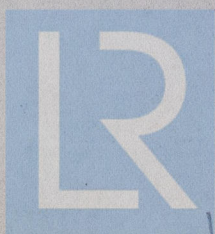
S/S NO 257

No. 3879
LLOYD'S TEST
320 lbs.
WP 180 lbs
GAH 13.5.24

S Neworth.

SUNDERLAND RPT. NO. 29327.

RETAIN



© 2021

Lloyd's Register

Foundation