

T. S. S. SPEEDONIA.

SCANTLINGS

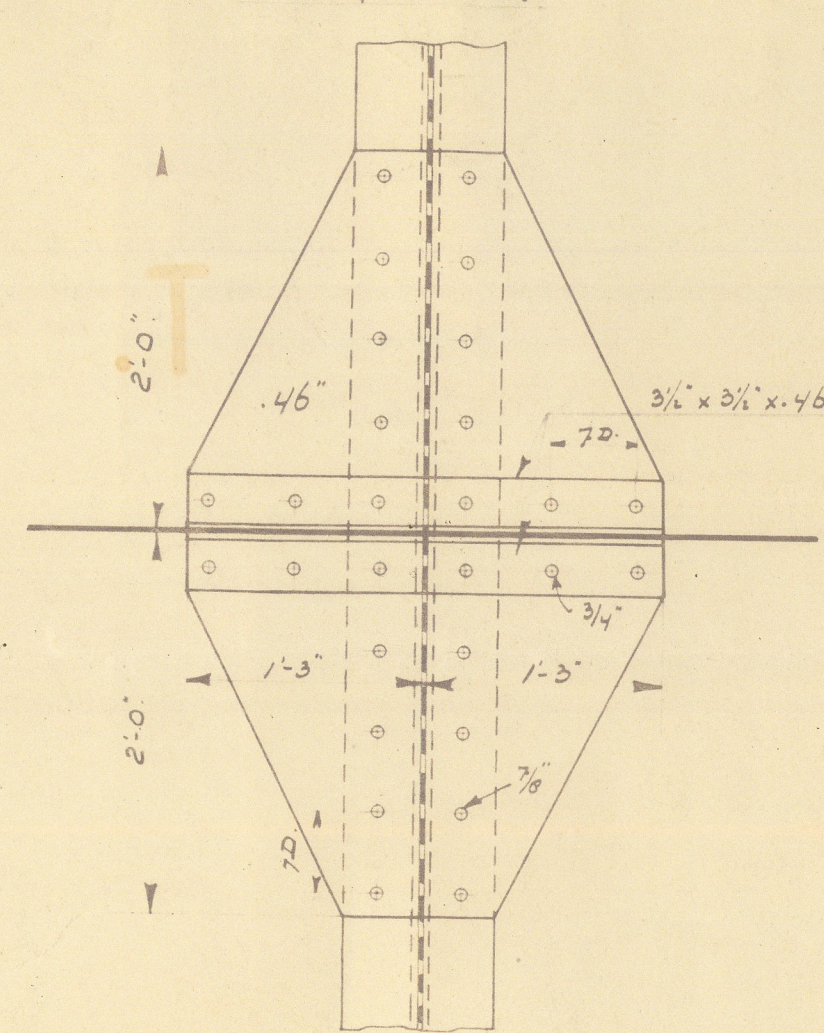
TRANSVERSE NUMBER B+D = 75.7  
LONGITUDINAL NUMBER L[B+D] = 23845  
DEPTHS TO LENGTH 10.50  
BREADTHS TO LENGTH 6.6  
DEPTH S = 26° 3'.

### DIMENSIONS

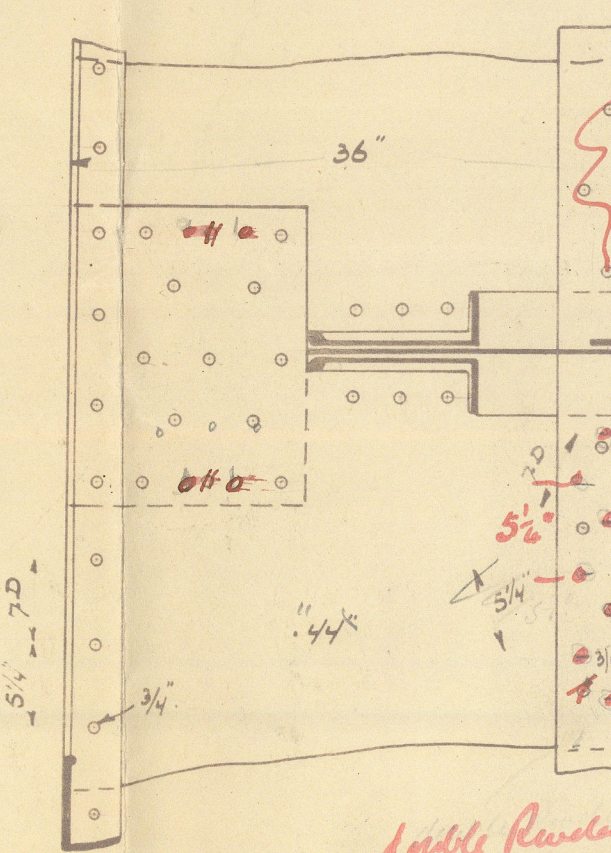
LENGTH BETWEEN PERPEN <sup>RS</sup>	315'-0"
BREADTH MOULDED	46'-10½"
DEPTH	28'-10"

SCALE  $\frac{1}{2}'' = 1'-0''$

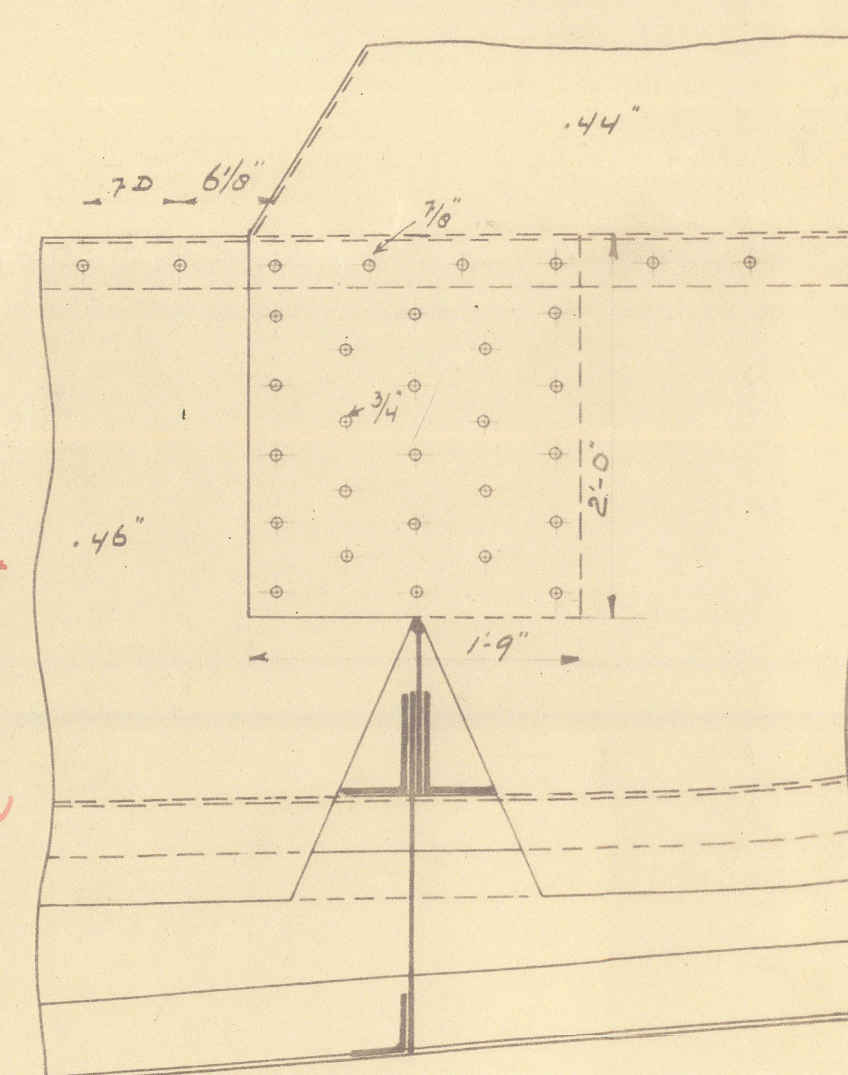
DETAIL M



DETAIL K



DETAIL L.



Double Rueda Ben  
los non yueh  
6: de an.

S.B.

B.B.

STRONG BEAM AS DETAILED  
AT WEB FRAMES AND SEMI BOX BEAM  
TWO FRAMES SPACES IN DEPTH  
AT BULTHEADS. THE REMAINING BEAMS  
MAY BE CUT OUT [SEE BULTHEAD PLAN]

HEIGHT OF TANK DECK FOR SCANTLINE  
8'-0" BELOW TOP OF TRUNK.

STRINGER PLATE 45 x  $\frac{1}{2}$ " FOR 1/2"  
AT ENDS 35 x  $\frac{1}{2}$ "

TIE PLATE 18 x  $\frac{1}{2}$ "

AT ALTERNATE FRAME T 12 x 6 x  $\frac{1}{2}$ "

FOR DISPOSITION OF BEAMS, POSITION OF BULKHEADS, WEB FRAMES. STRONG BEAMS, SEE PROFILE. FOR BULKHEADS, SEE SEPARATE PLAN.

## FRAMING

FRAMES  $6\frac{1}{2} \times 3\frac{1}{2} \times .50$  FOR  $\frac{3}{8}L$  TO  $.45$  AT ENDS.  
SPACED 25" APART.

SIDE REV: FRAMES  $6\frac{1}{2} \times 3\frac{1}{2} \times .50$  FOR  $\frac{3}{8}L$  TO  $.45$  AT ENDS.  
ALL TO TANK DECK IN FORECASTLE. REVERSE  
FRAMES EXTEND DISTANCE TO  $5'0"$  TO  $5'6"$  IN IT

RIVETING

SHELL RIVETING, FRAMES TO SHELL AND STRINGERS TO SHELL TO REMAIN AS AT PRESENT ON SHIP.  
TANK DECK AND EXPANSION TRUNK SEAMS DOUBLE CHAIN RIVETED -  $\frac{3}{4}$ " RIVETS. 2 $\frac{1}{2}$ " APART. LANDINGS 4".  
TANK DECK - EXPANSION TRUNK BUTS - DOUBLE RIVETED.  
 $\frac{1}{2}$ " RIVETS - OVERLAP 5". RIVETS 2 $\frac{1}{2}$ " APART.  
CENTRE LINE BULKHEAD - ALL LANDINGS DOUBLE RIVETED -  $\frac{3}{8}$ " DIA. CENTRE TO C.  
O.T. BULKHEADS DOUBLE RIVETED - RIVETS  $\frac{3}{8}$ " DIA. C. TO C.  
BULKHEAD BOUNDARY BARS TO SHELL DOUBLE RIVETED  $\frac{3}{4}$ " RIVETS 3 $\frac{1}{2}$ " APART.  
TANK DECK STRINGERS AND ALL BULKHEADS STIFFENER KNEES DITTO.  
BULKHEAD STIFFENERS, WEAPENRIES, FACE ANGLES EXPANSION TRUNK - SECTION C-D.  
STIFFENERS, DECK PLATING - AND TOP OF EXPANSION TRUNK TO BEAMS  $\frac{3}{4}$ " RIVETS - 4" APART.

NO BEAM AT LOWER DECK  
AT WEBFRAMES.

Beam on other side  
web frame

ONE WELD FRAME, ONE STRONG BEAM  
ONE PILLAR AND ONE DEEP FLOOR  
PER TANK.

PRESENT EQUIPMENT

1	BOWEN ANCHOR	45' EX STORM
1		15% LIGHTER
1		7 1/2'

COLLECTIVE. 128 1/4 CWT

300	FMS.	2 9/16"	STUD CHAIN CABLE
120	"	1 3/16"	STREAM CHAIN

REQUIRED. NO. 24560  
3 BOWERS. TOTAL. 128c<sup>t</sup>  
STREAM. 12 c<sup>t</sup> HEDGE 5/2 EX STR  
270 FAT. 1 1/2 STD C. CABLE.  
90" 1 3/4 STREAM OR 1 1/4 S<sup>h</sup>  
ONE 100 F. TOWLINE 4" S. W.  
2 OF 7 & 2 OF 6 MANILLA 90 FM

Equipment 1/20  
made up to  
requirements  
see Secretary letter  
7/1/81.

SHEER STRAKE 44" x  $1\frac{3}{16}$ " FOR  $\frac{1}{2}$ L TO  $1\frac{0}{16}$ ".

N. OUT  $\frac{1}{20}$  FOR  $\frac{1}{2}L$  TO FORM  $\frac{1}{40}$  AND AFT  $\frac{9}{20}$

M. IN ( $1/20'' + 1/20''$ ) =  $13/20''$  FOR  $1/2''$  L TO  $9/20''$  INCREASED  $1/20''$  FOR  $1/2''$  L.

L. OUT  $1\frac{1}{2}$ " FOR  $\frac{1}{4}$ " L TO  $1\frac{1}{2}$ " FORW, &  $\frac{9}{16}$ " AF

K. IN  $13/20$  FOR  $1/2L$  TO  $10/20$ . ✓

I. OUT  $1\frac{3}{10}$ " FOR  $\frac{1}{2}$ L TO  $1\frac{1}{2}$ " FORM. AND  $1\frac{1}{10}$  RE

H. IN  $13/20$ " FOR  $1/2$ L TO  $10/20$ ".

5. OUT  $13/20$ " FOR  $1/2L$  TO  $12/20$  FORW. AND  $10/20$  AFT

25. 1. 21.

W601-0346.





RETIRED



© 2020

Lloyd's Register  
Foundation

W601-0346