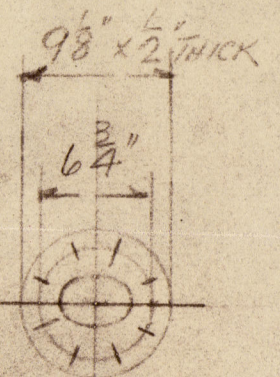
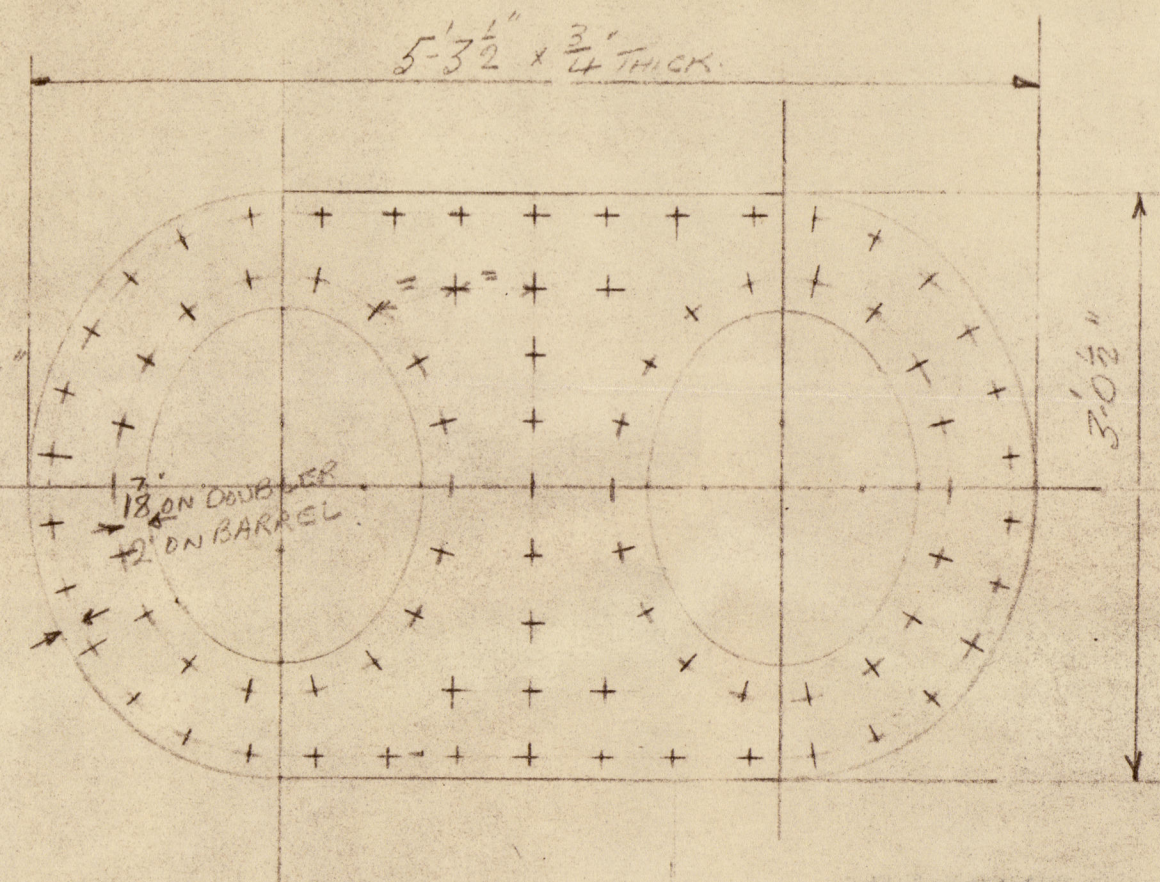
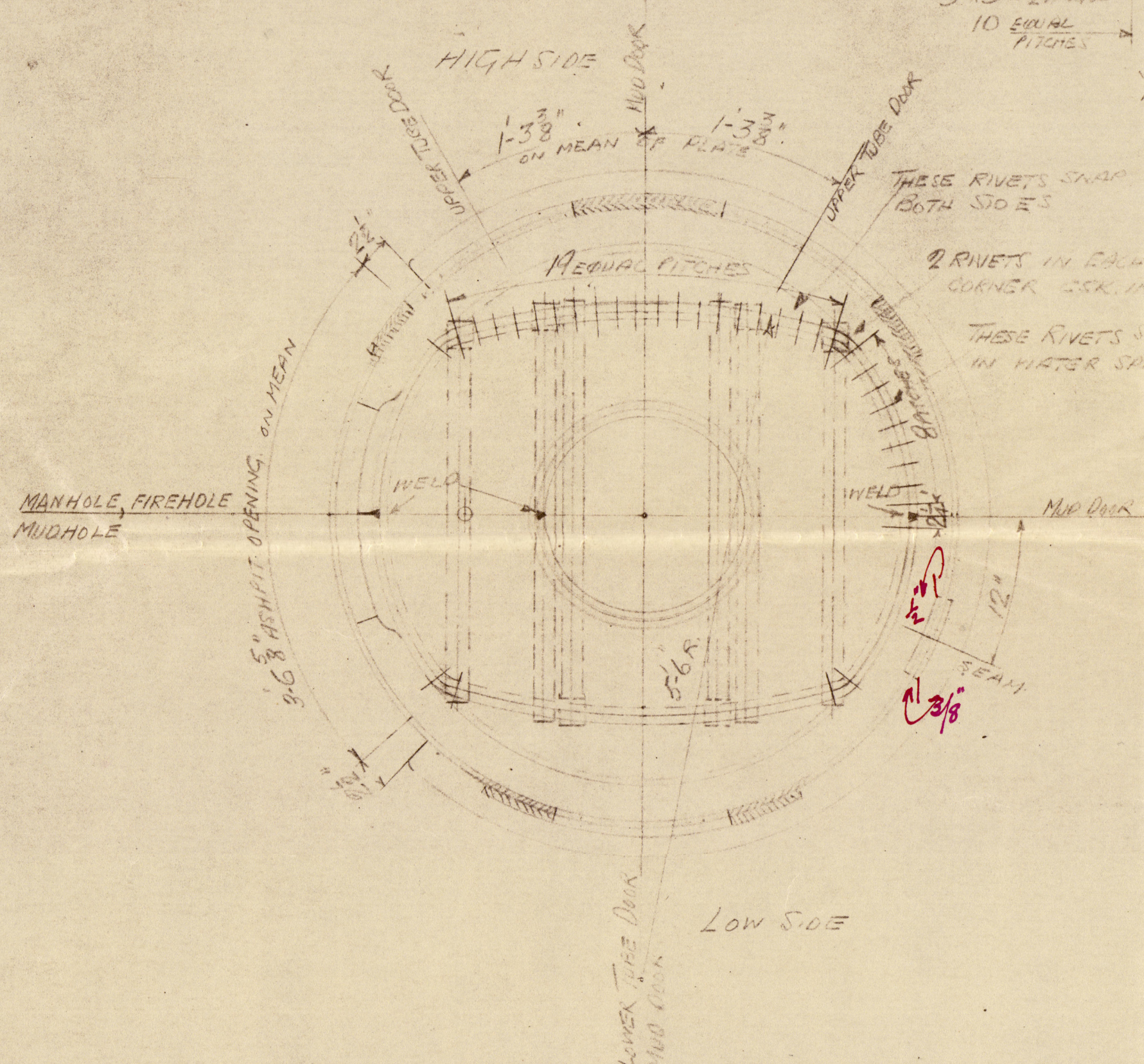
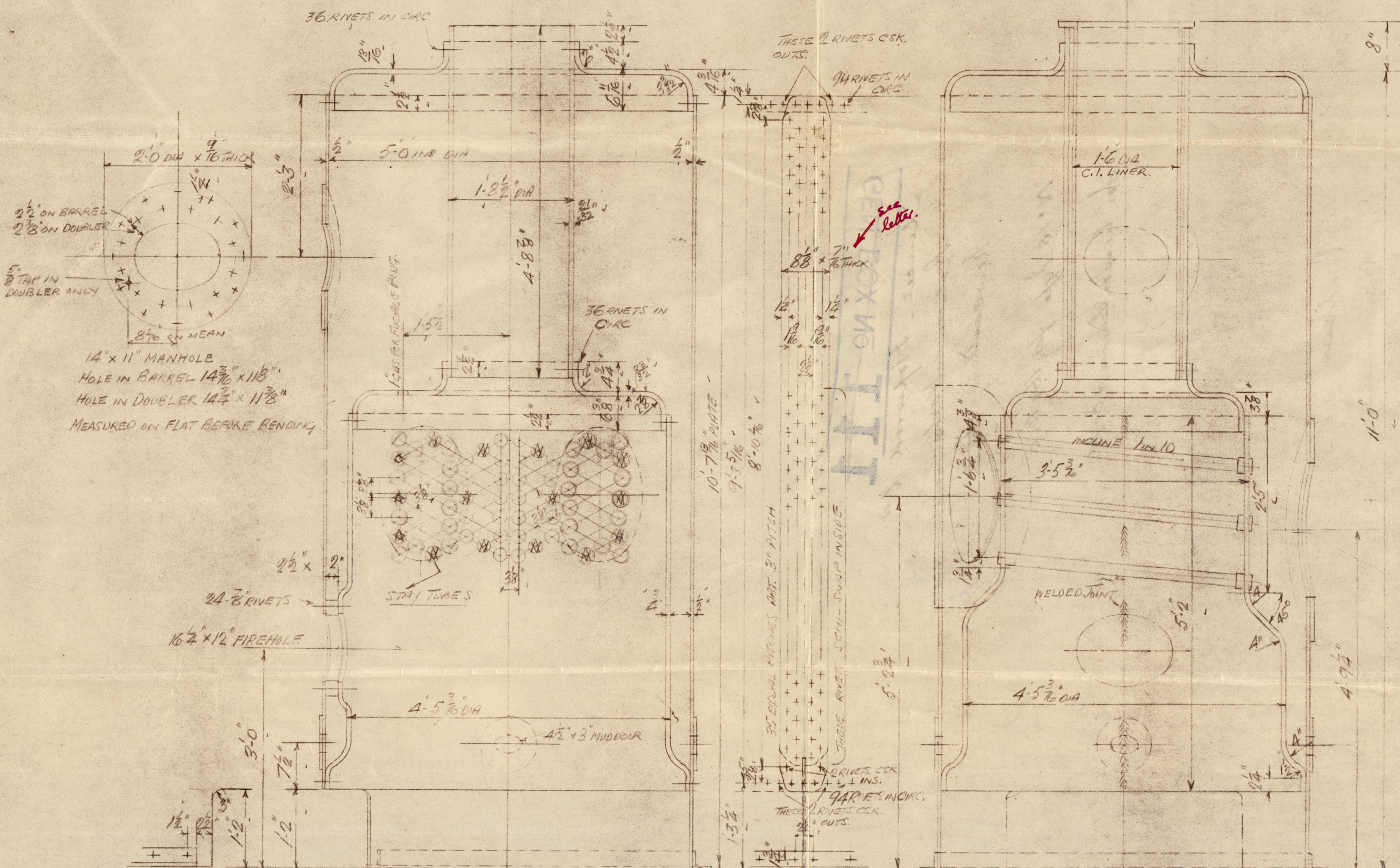


22" x 17" TUBE DOORS.
HOLE IN BARREL 22 3/8" x 17 1/4"
HOLE IN DOUBLER 22 3/8" x 17 3/8"
MEASURED ON FLAT BEFORE BENDING



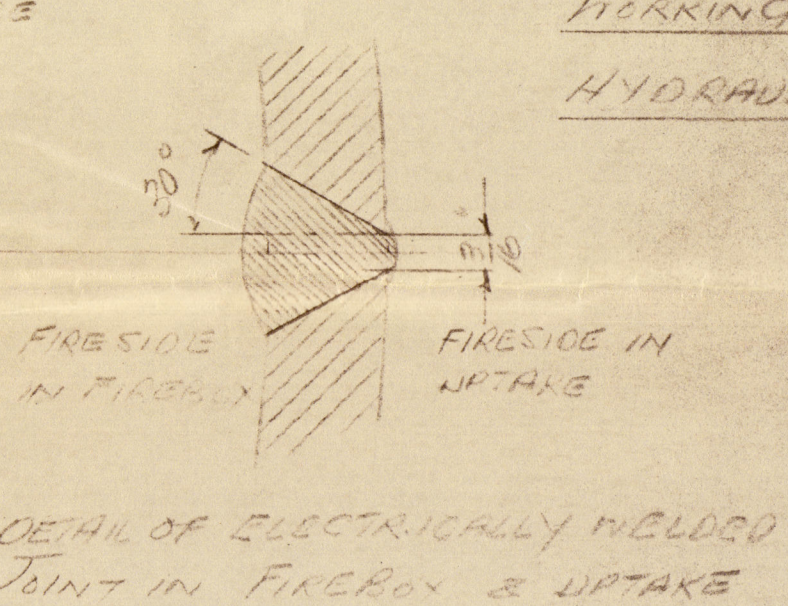
4 1/2" x 3" MUD DOOR
HOLE IN BARREL 4 5/8" x 3 3/8"
HOLE IN DOUBLER 5" x 3 3/8"
MEASURED ON FLAT BEFORE BENDING



88 TUBES

72 PLAIN TUBES 2 1/4" O.D. x 10 W.G. THICK SWELLED AT ONE TO 2 1/2" O.D. FOR 2 1/2" UP
16 STAY TUBES AS ABOVE BUT 1/2" THICK. ENDS SCREWED 11 THDS/INCH

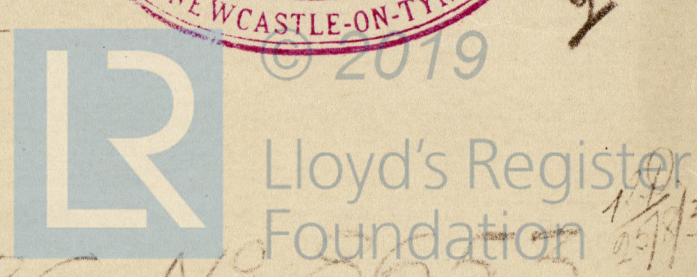
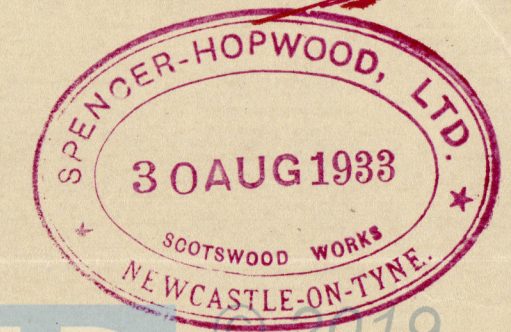
HEATING SURFACE	FIREBOX	30	SQUARE FEET
"	TUBES	170	"
"	TOTAL	250	"
GRATE AREA		14.5	"
WORKING STEAM PRESSURE		160	LBS. PER SQ. INCH
HYDRAULIC TEST PRESSURE		270	"



ALL RIVETS TO FINISHED DIA.

THE DESIGN SHOWN ON THIS DRAWING
IS PROTECTED BY PATENTS
OWNED AND CONTROLLED BY
SPENCER - HOPWOOD LTD

Boiler Arrangement for
ONE NO 18-S-H BOILER
ORDER NO S.B. 243.
SCALE 1" = 1 FOOT.



~~GEN. BOX NO 111~~

~~Spencer - Hopwood & Co~~

~~Scotwood Works~~

~~Newcastle-on-Tyne~~

(3E)

N^o 18 Type for 160 lbs 0

for Locomotives & Co.

Simons

704

Balbus.

Baler Arrangement

Qs 54092.



© 2019

Lloyd's Register
Foundation

W6-0154