

5/5/28

LOYD'S NUMBERS
1. 0 = 500 - 50 = 450
1. (8+0) = 500 - (68+50) = 50-57
70 = 500 - 30 = 470

FOR THICKNESS OF UPPER DECK PLATING - STRINGER SEE DETAIL PLAN
BUTY OF UPPER DECK PLATING
98 PLATES QUADRUPLE RIVETED OVERLAP FOR 12 LEVELS
2. 0 RIVETS IN BEAMS & 2. 1/2

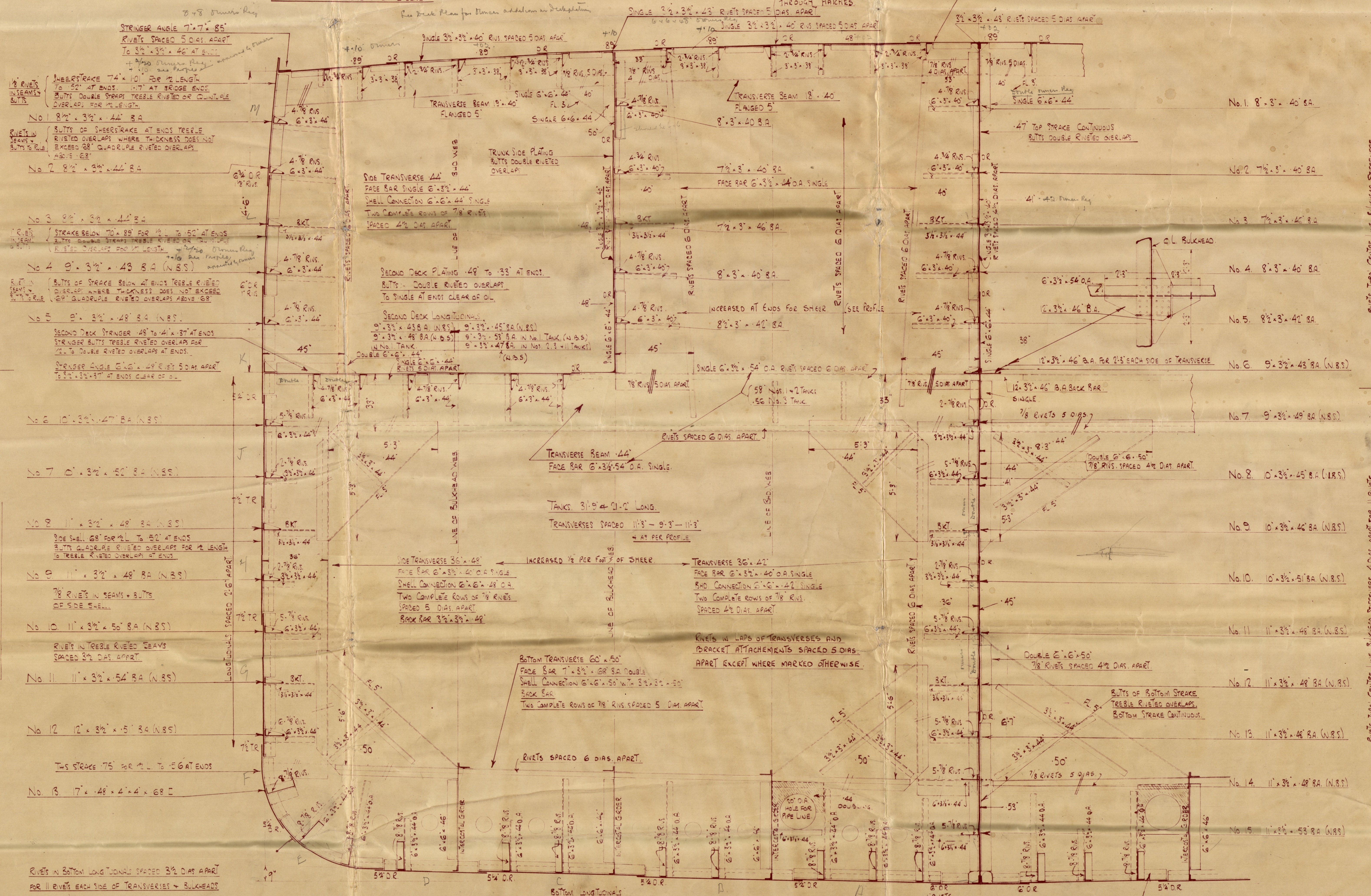
BUTY OF UPPER DECK PLATING AT END OF BUTTE
BUTY OF UPPER DECK PLATING AT END OF BUTTE
BUTY OF UPPER DECK PLATING AT END OF BUTTE
BUTY OF UPPER DECK PLATING AT END OF BUTTE

SHIP No 137
MIDSHIP SECTION & O.T. TRANSVERSE BHD.
DIMENSIONS 525' O.L. B.P. 68' 6" B.M. 39' 0" D.M.
SCALE 1/2" = ONE FOOT

N.B.S. = NEW BRITISH STANDARD

SPECIAL NOTATION 'LONGITUDINAL FRAMING'
TO CLASS LLOYDS 100 A1 CARRYING PETROLEUM OR MOLASSES IN BULK.
EQUIPMENT TO RULE.

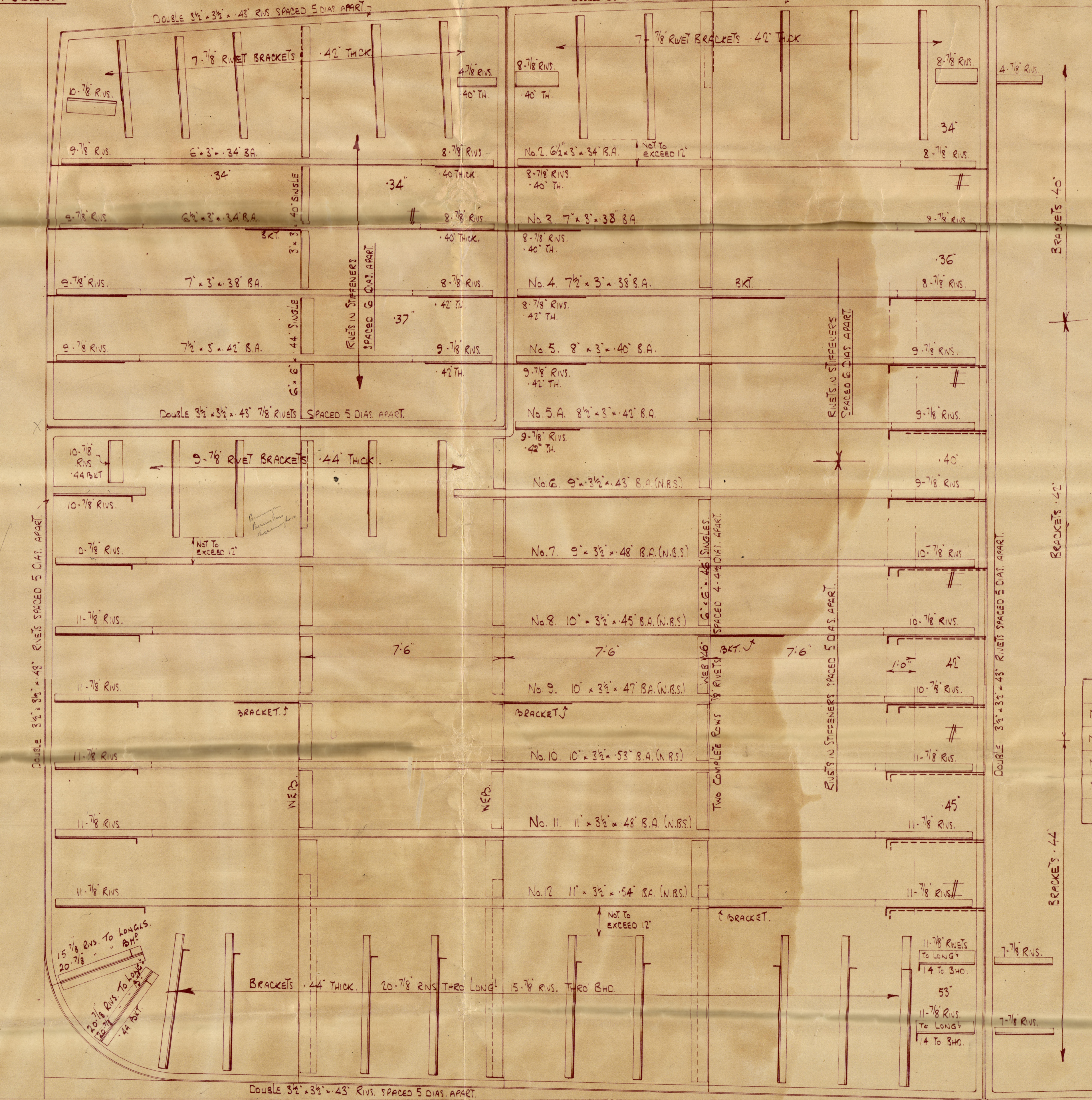
NOTES FOR LONGITUDINALS TO BE WELL ROUNDED AT CORNERS AND NOT ENOUGH PUNCHED
LONGITUDINALS IN TRANSVERSE TO MATCH THE SAME RIVETS 5" ON TO THE SHELL
AS SHOWN ON MIDSHIP SECTION AND NOT TO BE CLOSER TO WATER TANKS
TRANSVERSE BULKHEAD AND C.L. BULKHEAD PLATING AND BULKHEAD RIVETS CLEAR OF ANCHORS
TO BE AS PER RULE
TRANSVERSE BULKHEAD AND C.L. BULKHEAD STIFFENERS TO BE SUBSTANTIALLY INCREASED AT END FOR SHEER



THIS SHEET CARRIES THE BULKHEAD STIFFENERS
G.O. 1/2" FROM CENTRE LINE

THIS SHEET CARRIES THE BULKHEAD STIFFENERS
G.O. 1/2" FROM CENTRE LINE

THIS SHEET CARRIES THE BULKHEAD STIFFENERS
G.O. 1/2" FROM CENTRE LINE



	FORE END	AFT END
No. 1 TANK	6" x 3/4" x 40' 0"	6" x 3/4" x 40' 0"
No. 2 TANK	6" x 3/4" x 40' 0"	6" x 3/4" x 40' 0"
No. 3 TANK	6" x 3/4" x 40' 0"	6" x 3/4" x 40' 0"
No. 4 TANK	6" x 3/4" x 40' 0"	6" x 3/4" x 40' 0"
No. 5 TANK	6" x 3/4" x 40' 0"	6" x 3/4" x 40' 0"
No. 6 TANK	6" x 3/4" x 40' 0"	6" x 3/4" x 40' 0"
No. 7 TANK	6" x 3/4" x 40' 0"	6" x 3/4" x 40' 0"
No. 8 TANK	6" x 3/4" x 40' 0"	6" x 3/4" x 40' 0"
No. 9 TANK	6" x 3/4" x 40' 0"	6" x 3/4" x 40' 0"
No. 10 TANK	6" x 3/4" x 40' 0"	6" x 3/4" x 40' 0"
No. 11 TANK	6" x 3/4" x 40' 0"	6" x 3/4" x 40' 0"
No. 12 TANK	6" x 3/4" x 40' 0"	6" x 3/4" x 40' 0"
No. 13 TANK	6" x 3/4" x 40' 0"	6" x 3/4" x 40' 0"

INCREASES FOR SHEER
WEB 10' 0" FROM CENTRE LINE

INCREASES FOR SHEER
WEB 17' 6" FROM CENTRE LINE

WEB 10' 0" FROM CENTRE LINE

WEB 17' 6" FROM CENTRE LINE

WEB 25' 0" FROM CENTRE LINE



MEASURES THE FURNISH SHIPBUILDING CO. LTD.
HARRISON HILLMAN & CO.
15th May 1928.

Furness. S.B. 602 (16)

No 137

MIDSHIP SECTION

+

O.T. TRANSVERSE BHD.

(AMENDED)

525-0 x 68-6 x 39-0

Carrying Petroleum in bulk
(Longitudinal framing)

Owner's addition in pencil

S.S. Athelcrown
MDB. RPT. No. 13781



© 2019

Lloyd's Register
Foundation

W6-0042