

24.8.07

## MIDSHIP SECTION

## TWIN SCREW STEAMER

- SCALE  $\frac{1}{2}$  INCH = ONE FOOT

№ 142

## NUMERALS

$\frac{1}{2}$  BREATH = 24.58 ✓  
 $\frac{1}{2}$  GIRTH = 55.29 ✓  
 DEPTH = 34.52 ✓

7.00 ✓  
107.39 ✓ FRAME NUMERAL

$$\begin{array}{r} 443 \\ \hline 32217 \\ 12251 \end{array}$$

42956  
42956  
47573.77 PLATING NUM

4731377 FLATTING HOME

DEPTH TO LENGTH UPPER DECK = 12.83  
" " " MAIN " = 16.67  
BREADTH TO LENGTH = 9.00

EQUIPMENT N<sup>o</sup> 114-39 x 443 = 50674.47 ✓  
ERECTOR 225-33 x 114-39 = 3221.93 ✓  
8. 53896.40 EQUIPMENT NUMERAL  
5403939

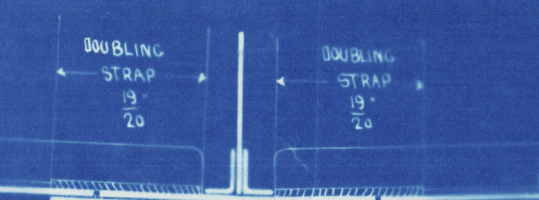
FRAMES  $62 \frac{1}{2} \times 32 \frac{11}{16}$  SPACED 30" APART, TO FORM  $10 \frac{1}{2}$ " GIRDER WITH REVERSE FRAME  $\frac{3}{8}$ " LAP  
DOUBLE FRAMES IN AFTER PEAK ONE TO UPPER AND THE OTHER TO POOP DECK HEIGHT.  
BULKHEAD FRAMES DOUBLE  $6 \times 32 \frac{11}{16}$  TO  
FRAMES IN CELLULAR BOTTOM  $32 \frac{1}{2} \times 32 \frac{11}{16}$   
FRAMES IN BOTH PEAKS SPACED 25" APART OF  $6 \times 32 \times 60$  ANGLE TO FORM  $7 \frac{1}{2}$ " GIRDER IN FORE PEAK  
FRAMES IN WAY OF LOWER DECK BEAMS  $62 \times 32 \times \frac{3}{8}$  WITH REVERSE BAR TO FORM 8" GIRDER  
FRAME RIVETING TO SHELL 6 DIAMETERS APART 8" RIVETS

REVERSE FRAMES IN WAY OF 10 1/2 GIRDER OF 7, 3 1/2, 11-10  
FRAME FOR 1/2 LENGTH ANKSHIPS, BEFORE AND ABAFT 1/2 LENGTH TO EXTEND TO UPPER AND MAIN DECKS  
ALTERNATELY, EXCEPT IN WAY OF FOLE, WHERE THEY EXTEND TO FOLE AND MAIN DECKS ALTERNATELY.  
REVERSE FRAMES IN WAY OF LOWER DECK BEAMS AND FORE PEAK OF 4 1/2, 3 1/2, 10  
TO FORM 8 AND 7 1/2 GIRDER AND ABOVE

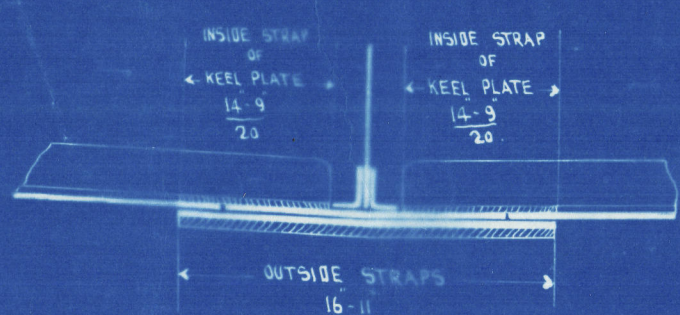
BULKHEADS  $\frac{8 \cdot 7}{20}$  STIFFENED PER RULE. CONNECTION (DOUBLE) TO TANK TOP  $4 \frac{1}{2} \times 3 \frac{1}{2} \times \frac{10 \cdot 5}{20}$

FLOORS AT ENDS OF VESSEL  $\frac{8 \cdot 7}{20}$  IN PEAKS.

STEM 12<sup>1</sup>/<sub>2</sub> x 3<sup>1</sup>/<sub>4</sub> STERN POST (TWIN SCREW) CAST STEEL 12<sup>1</sup>/<sub>2</sub> x 7<sup>3</sup>/<sub>4</sub> RUDDER 10<sup>1</sup>/<sub>2</sub> DIA<sup>R</sup>. 5<sup>1</sup>/<sub>4</sub> PINTLES



— SKETCH OF STRAP TO KEEL  
— PLATE DOUBLING. —



— SKETCH OF KEEL PLATE BUTTSTRAPS —

— NOTE — NO REDUCTION OF ABOVE SHELL THICKNESS IN WAY OF DOUBLE BOTTOM

SHELL PLATING ALL TO HAVE LAPPED BUTTS BELOW LOAD  
WATER LINE, ABOVE WATER LINE TO BE FLUSH RIVETED.  
OUTSIDE STRAKES EXCEEDING 45 AND INSIDE STRAKES  
EXCEEDING 54 TO BE QUADRUPLE OVERLAPS, PITCH OF  
RIVETS IN THESE OVERLAPS TO BE 32 DIAMETER PITCH.  
TWO ADDITIONAL RIVETS IN EACH LANDING BETWEEN FRAMES

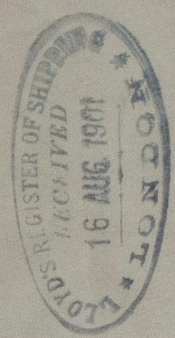
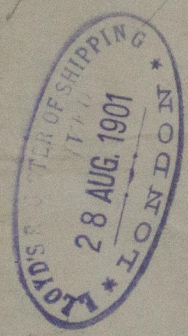


*J.S.S. Aki Maru*

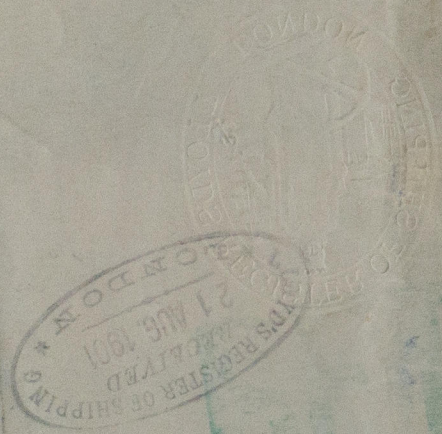
*Med up Sectu*

*Mag Rep 272*

*"Aki Maru"  
Mag. 272*



*142*



**RECEIVED**

*W599-0256*

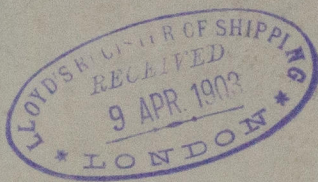




Wire hawse

120 fms $5\frac{1}{4}$	71 tons without tr.
90 " 5"	64
90 " 4"	33
90 " 4"	33
90 " $3\frac{1}{4}$	22

Atlas Wire Rope Works  
Redditch  
Cables by Harbours



© 2021

Lloyd's Register  
Foundation