

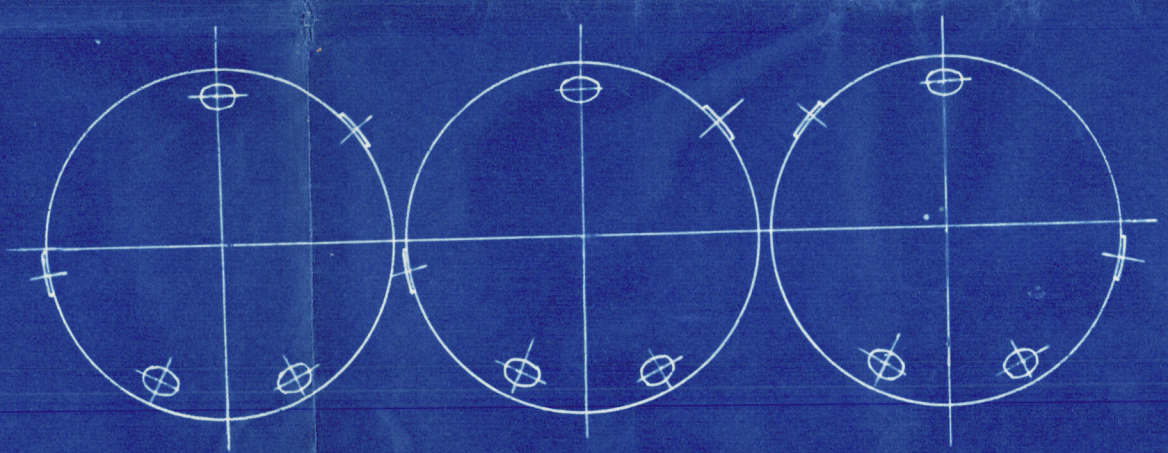
- NORTHUMBERLAND ENGINE WORKS -

- TRACING 489. - **- SCHEDULE L. -**

- STEAM BOILER -

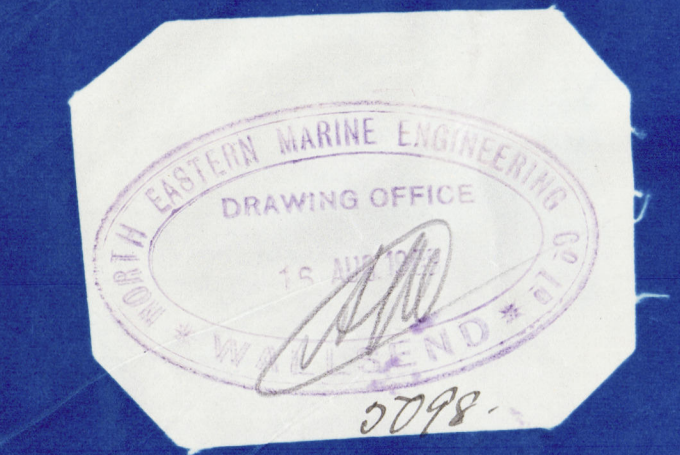
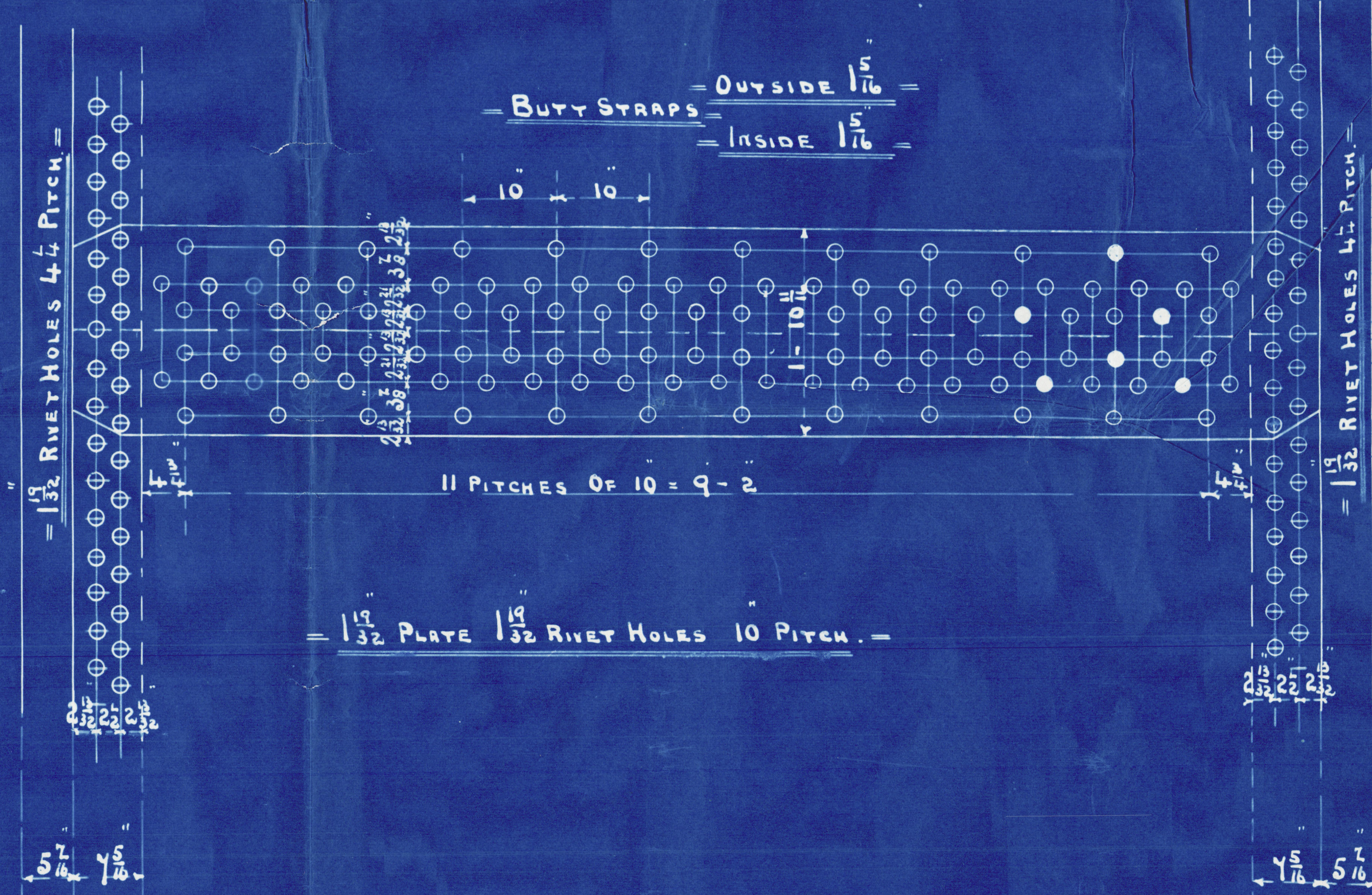
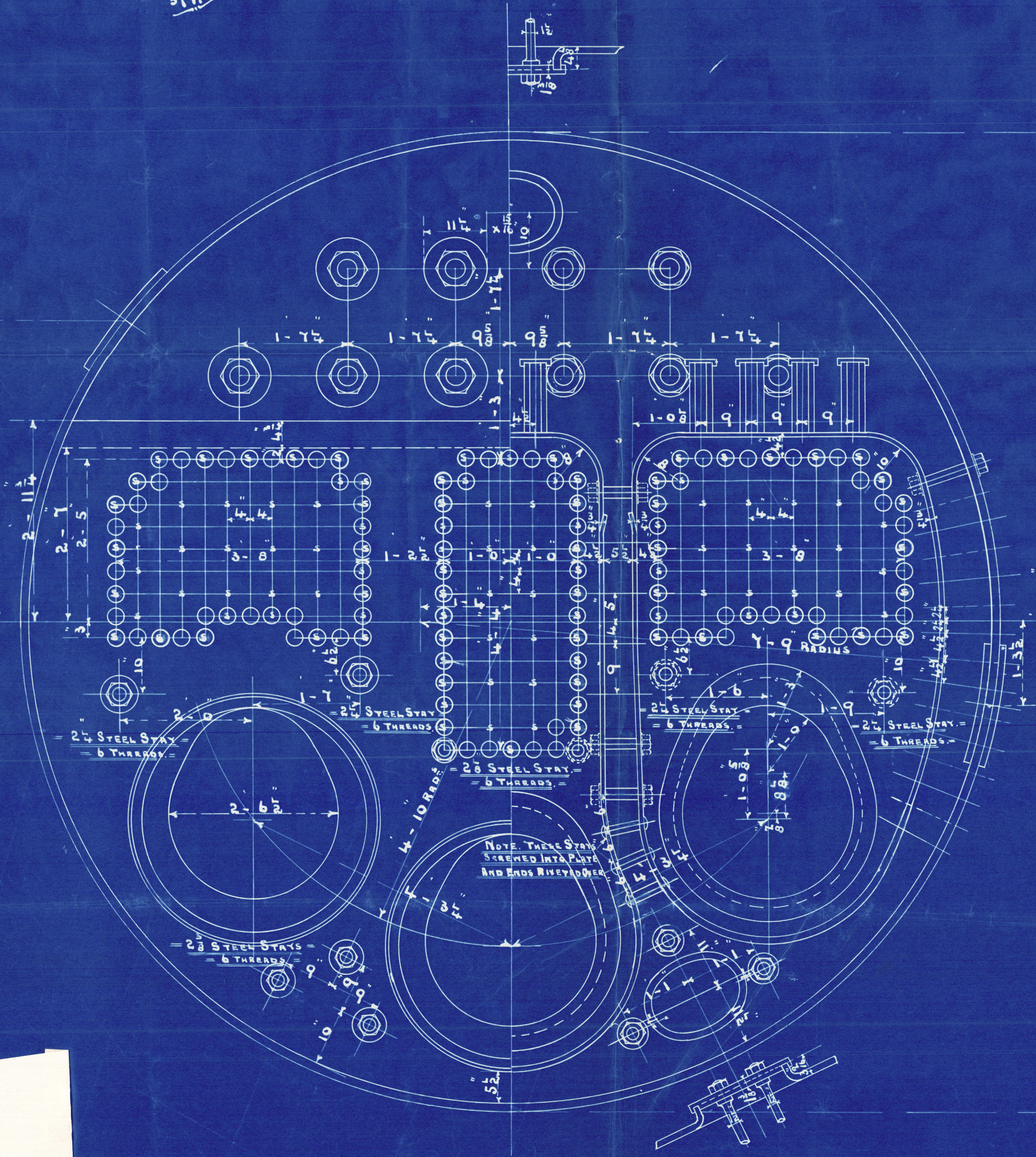
- SCALE. 1 INCH = ONE FOOT. -

25/11/09



VIEW LOOKING ON BACK OF BOILERS SHEETING -
POSITION OF MANHOLES AND BUTT JOINTS.

J.W. 3
5/11/09



- WORKING PRESSURE = 220 LBS. -

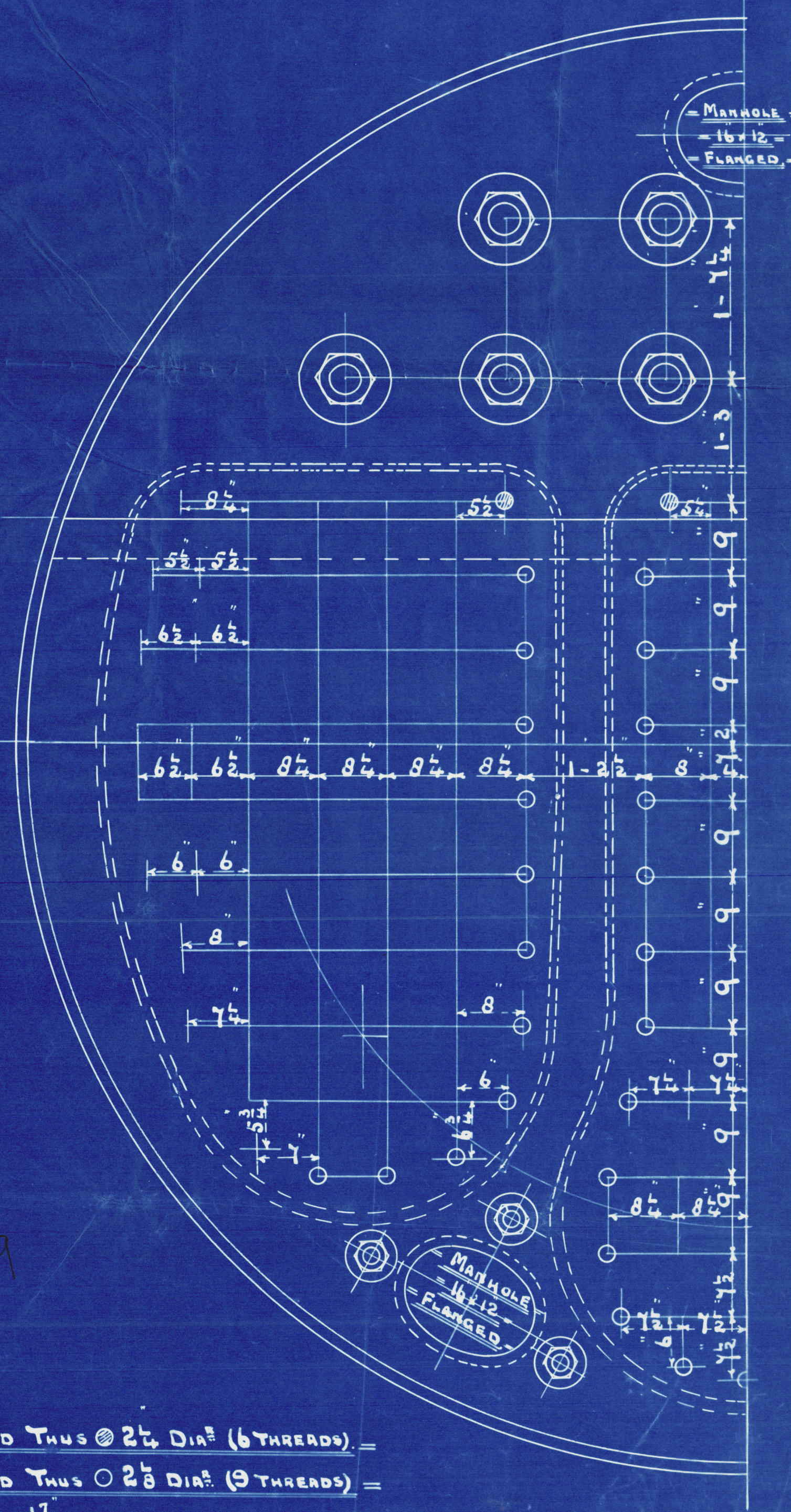
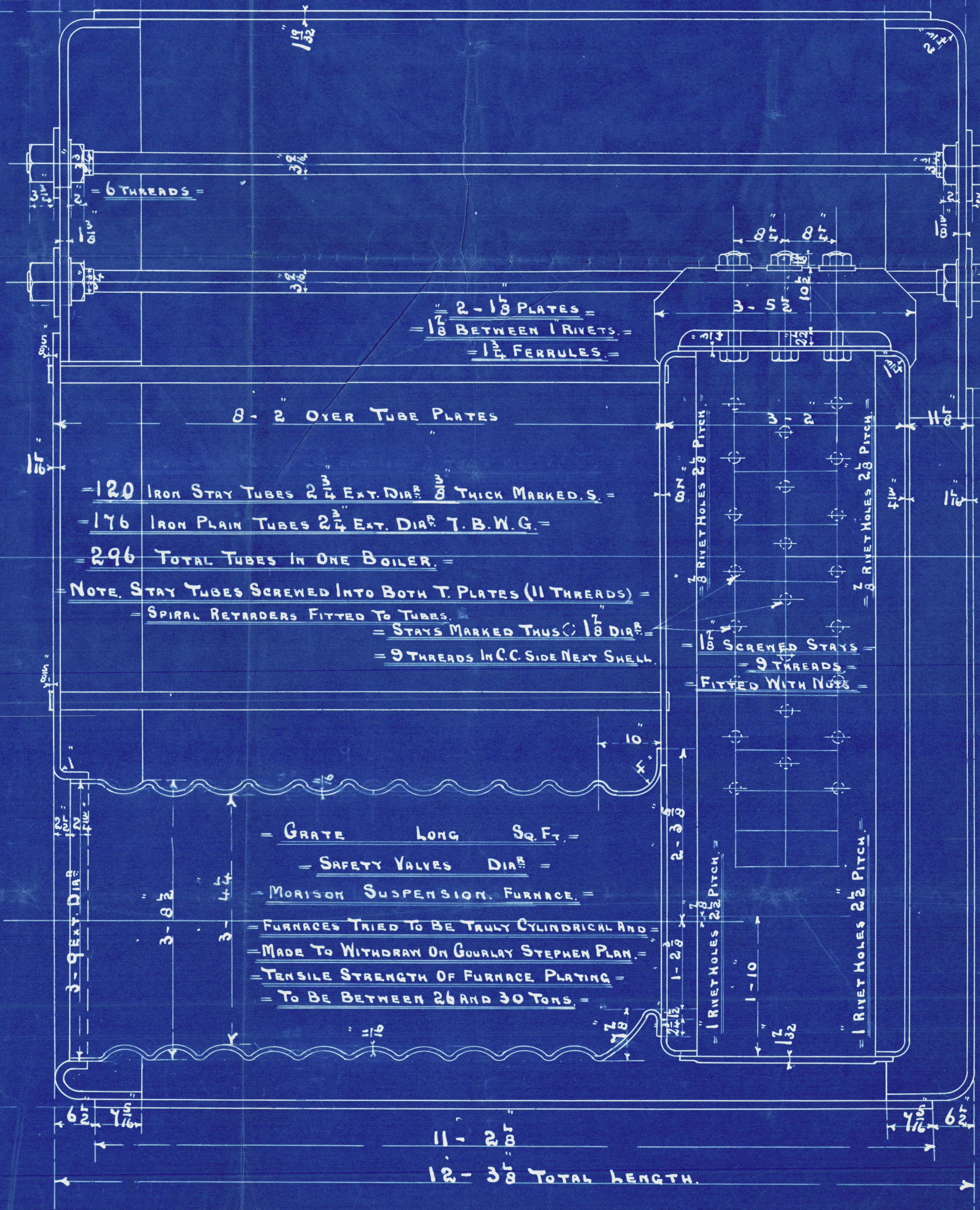
- TEST PRESSURE = 440 LBS. -

- NOTE. ALL PLATES, STAYS, &c. TO BE OF STEEL SMOKE TUBES OF IRON. -

- TENSILE STRENGTH OF SHELL PLATING TO BE NOT LESS. -

- THAN 28 3/4 TONS PER SQUARE INCH. -

- ALL HOLES DRILLED IN PLACE AFTER PLATES ARE BENT. -



J.W. 3
25-11-09

- STAYS MARKED THUS @ 2 1/2 DIA. (6 THREADS) -

- STAYS MARKED THUS O 2 1/2 DIA. (9 THREADS) -

- ALL OTHERS 1 1/2 DIA. (9 THREADS) -

- NOTE. ALL STAYS SCREWED AND FITTED WITH NUTS. -

- 3 THUS. - CONTRACT 1909. -

- FOR POSITION OF MANHOLES AND BUTT JOINTS -
- SEE SKETCH ABOVE. -

N. E. M. E. CO., LIMITED, WALLSEND.

ENCLOSURE

FOR

Messrs.

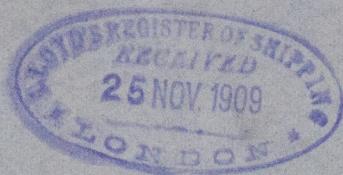
W598-0291 1/2

North Eastern Marine Eng^g Co^{ys} Ltd
No 1909

Amended Print

Morison's Furnaces substituted
in place of Brown's Improved

Messrs Short Bros
S/S No 358



S.S. "CACIQUE"

NEWCASTLE ON TYNE.

REPORT No. 57816
Sld. " " 24344

RETAIN

W598-0291 2 1/2



© 2020

Lloyd's Register
Foundation