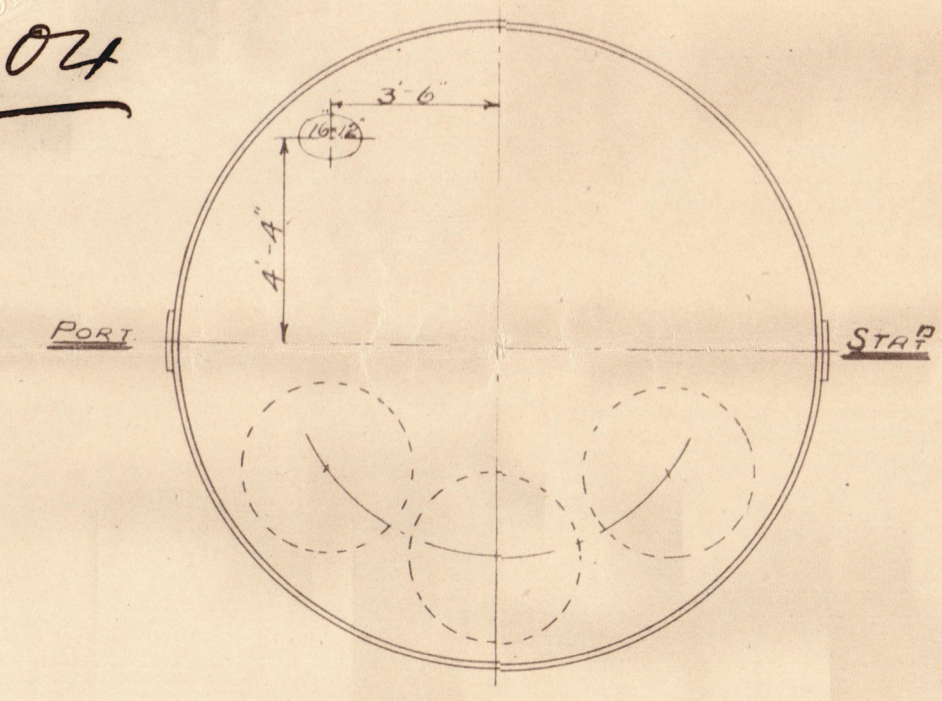


20:6:04



VIEW SHOWING POSITION
OF MANHOLE ON BACK OF BOILER
SCALE 1/2" = 1 FOOT

HEATING SURFACE	SQ. FT.
TUBES	1261
FURNACES	115
CHAMBERS	201
FRONT TUBE PLATE	23
TOTAL	1600
GRATE AREA	58 1/2

LONGITUDINAL SEAM 7/8" RIVETS 1 1/2" HOLES 6 1/4" PITCH
CIRCULAR SEAM 1" RIVETS 1 1/2" HOLES 3 1/2" PITCH
DOUBLE BUTT STRAPS 3/8" THICK

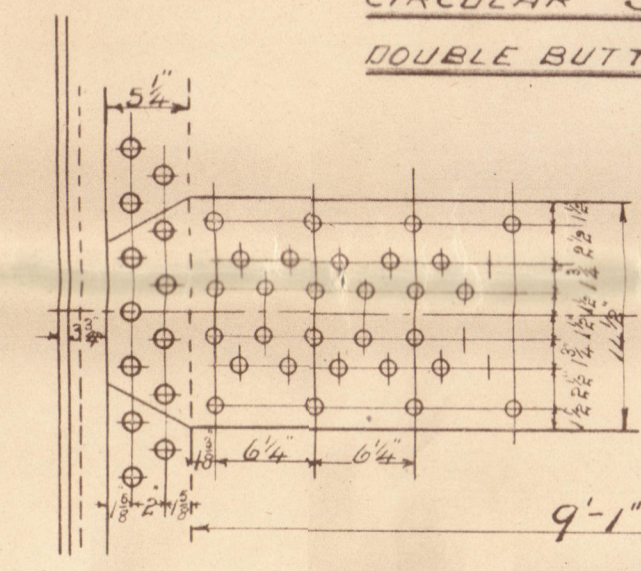
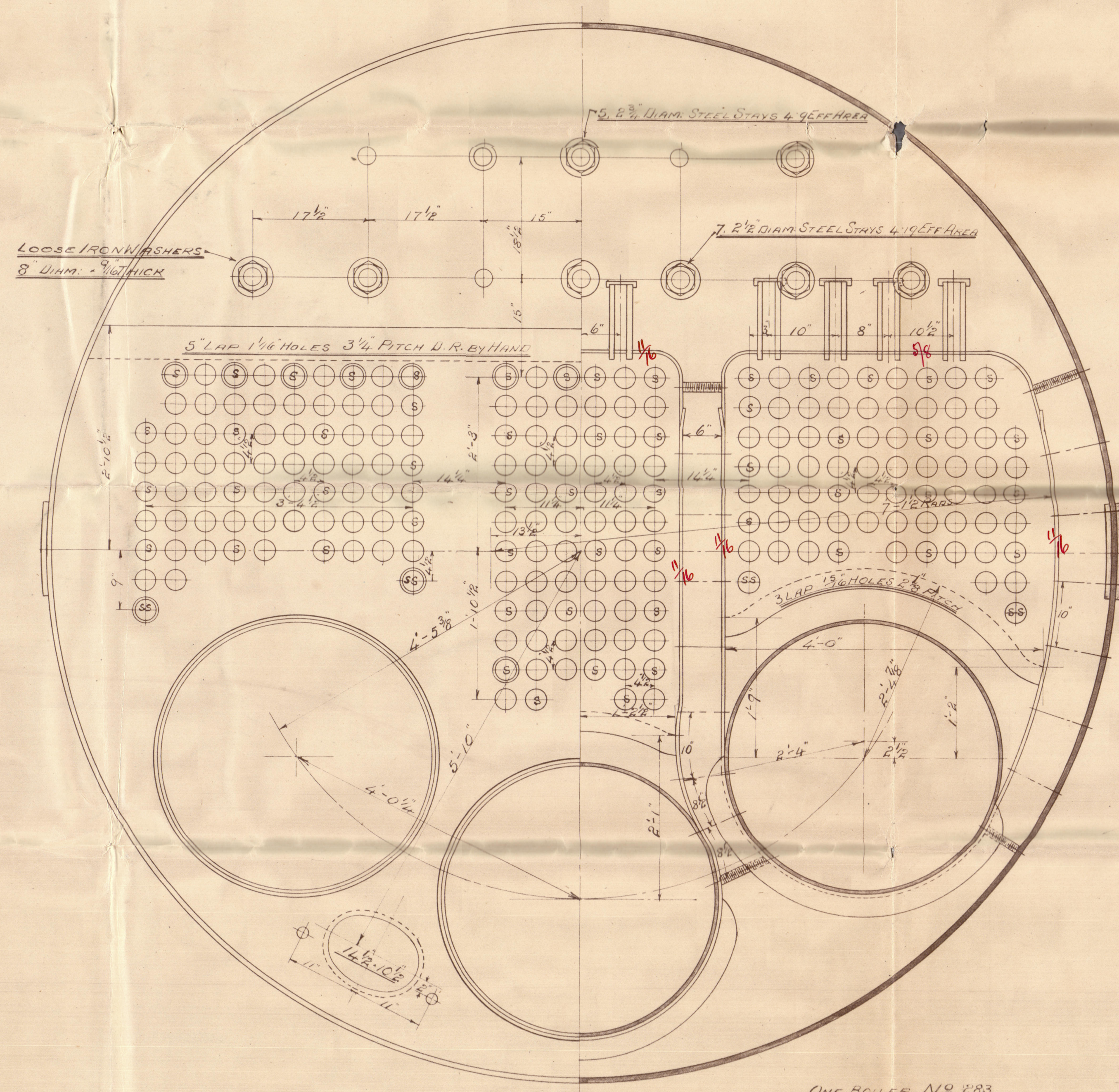
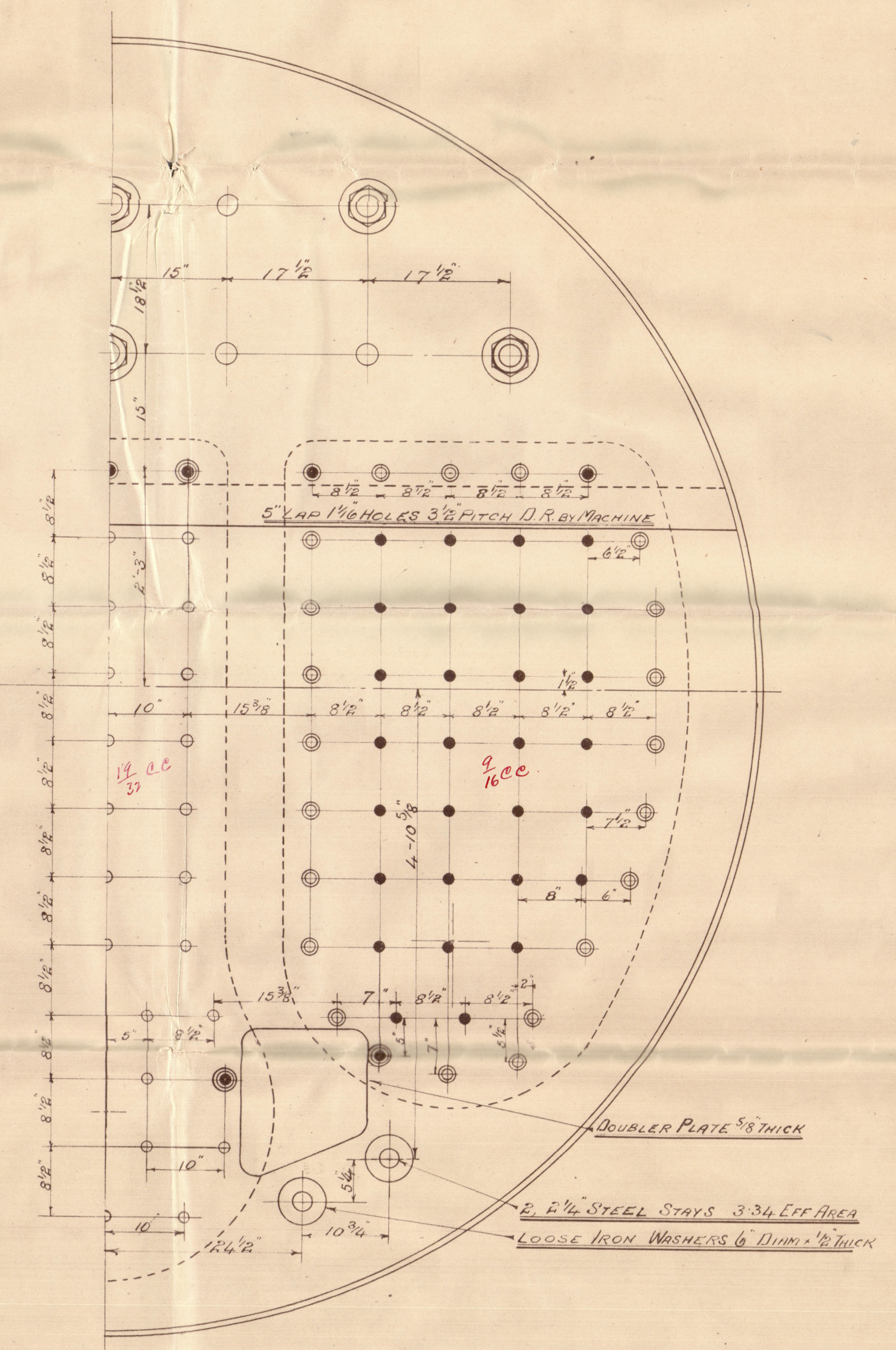
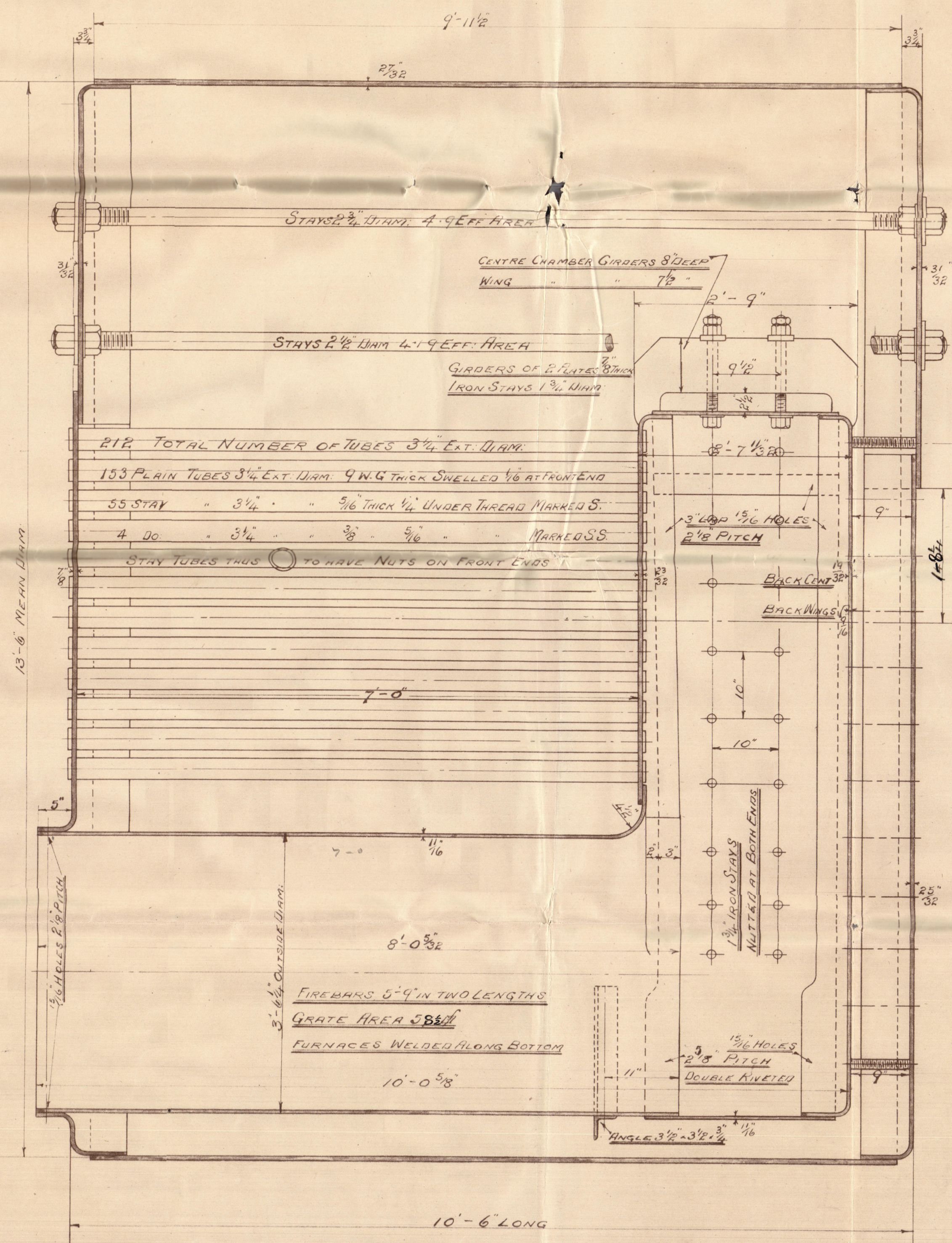


PLATE THICKNESS	
SHELL	3/8"
BUTTS	1/2"
TOP OF FRONT	3/8"
" " BACK	3/8"
BOTTOM OF FRONT	3/8"
" " BACK	3/8"
BACK TUBE PLATES	3/8"
COMB CHAM TOP CENT	1/2"
" " WINGS	5/8"
" " SIDES	1/2"
" " BACK CENT	3/8"
" " WINGS	3/8"
FURNACES	1/2"
GIRDERS	3/8"



ONE BOILER NO 283



TO PASS LLOYDS SURVEY FOR 130 LBS. WORKING PRESSURE
TENSILE STRENGTH OF SHELL PLATES AND BUTT STRAPS P 8 TO 35 TONS
DO OF ALL OTHER PLATES AND SCREWED STAYS 20 TO 30 TONS
DO OF LONGITUDINAL STAYS 27 TO 35 TONS

BOILER NO 283

FOR MESSRS THE GOOLE SHIPBUILDING CO 95 NO 70

SCALE 1" = 1 FOOT



- STAYS IN CHAMBER BACKS
- 1 1/4" IRON STAY 2.09 EFF. AREA
 - 1 1/2" IRON STAY 1.78 EFF. AREA
 - 1 1/2" STEEL " 1.78 " "
 - 1 1/2" STEEL " 2.09 " "
 - 1 1/2" STEEL " 2.42 " "

NOTE ALL STAYS IN BOUNDING ROWS
TO BE NUTTED AT BOTH ENDS
STAYS IN NESTS NUTTED IN CHAMBERS ONLY





Richardsons Walworth & Co

No 283

for

The fore D B Co s/s No 76

130 lbs Mr

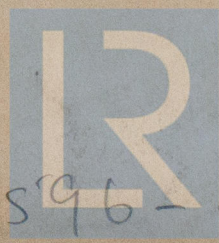


s/s "Grace"

Indb report No 3996

Hull. Rpt. No 16430

RETAIN



© 2021

Lloyd's Register Foundation

W 596 - 0089