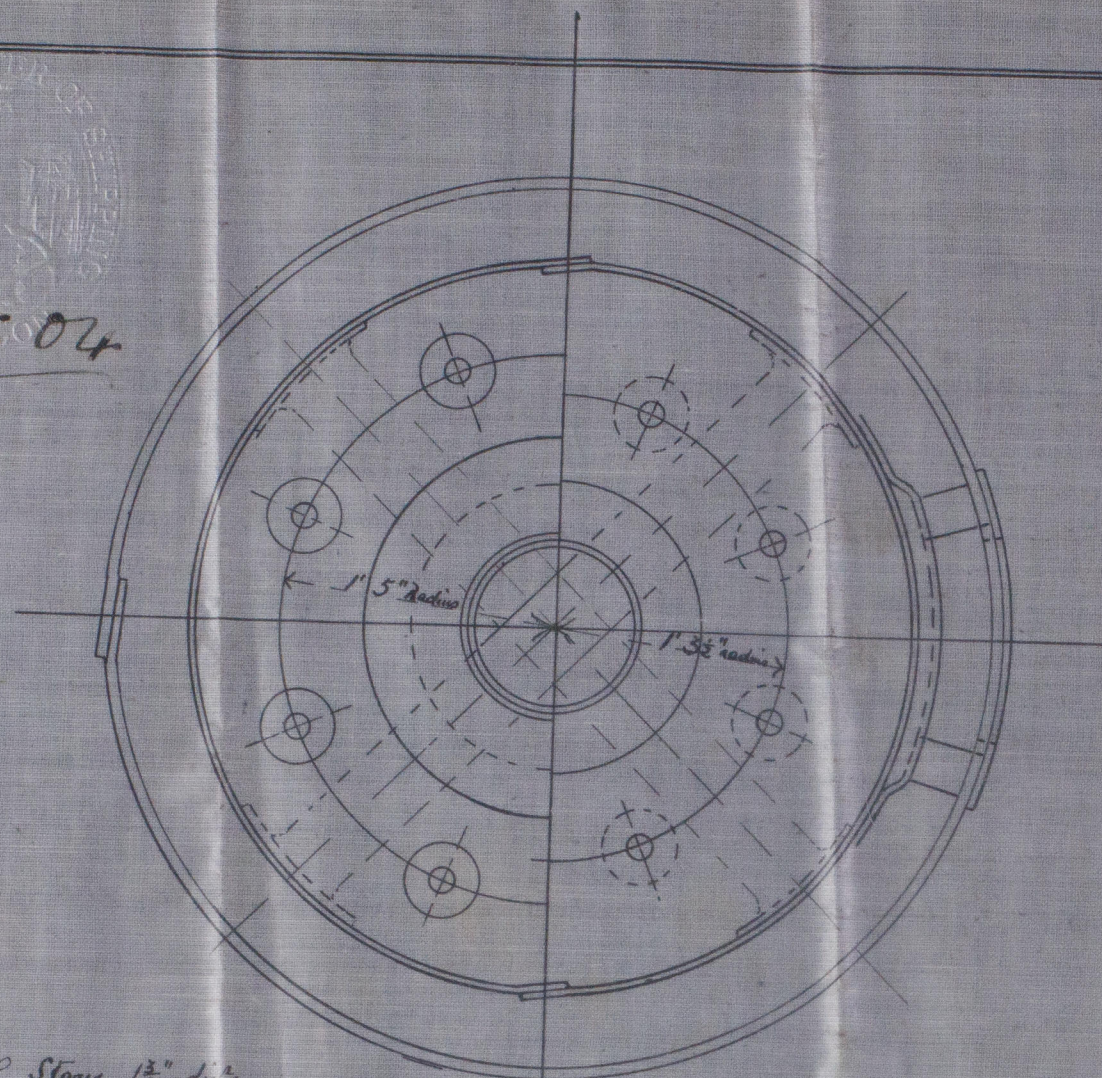
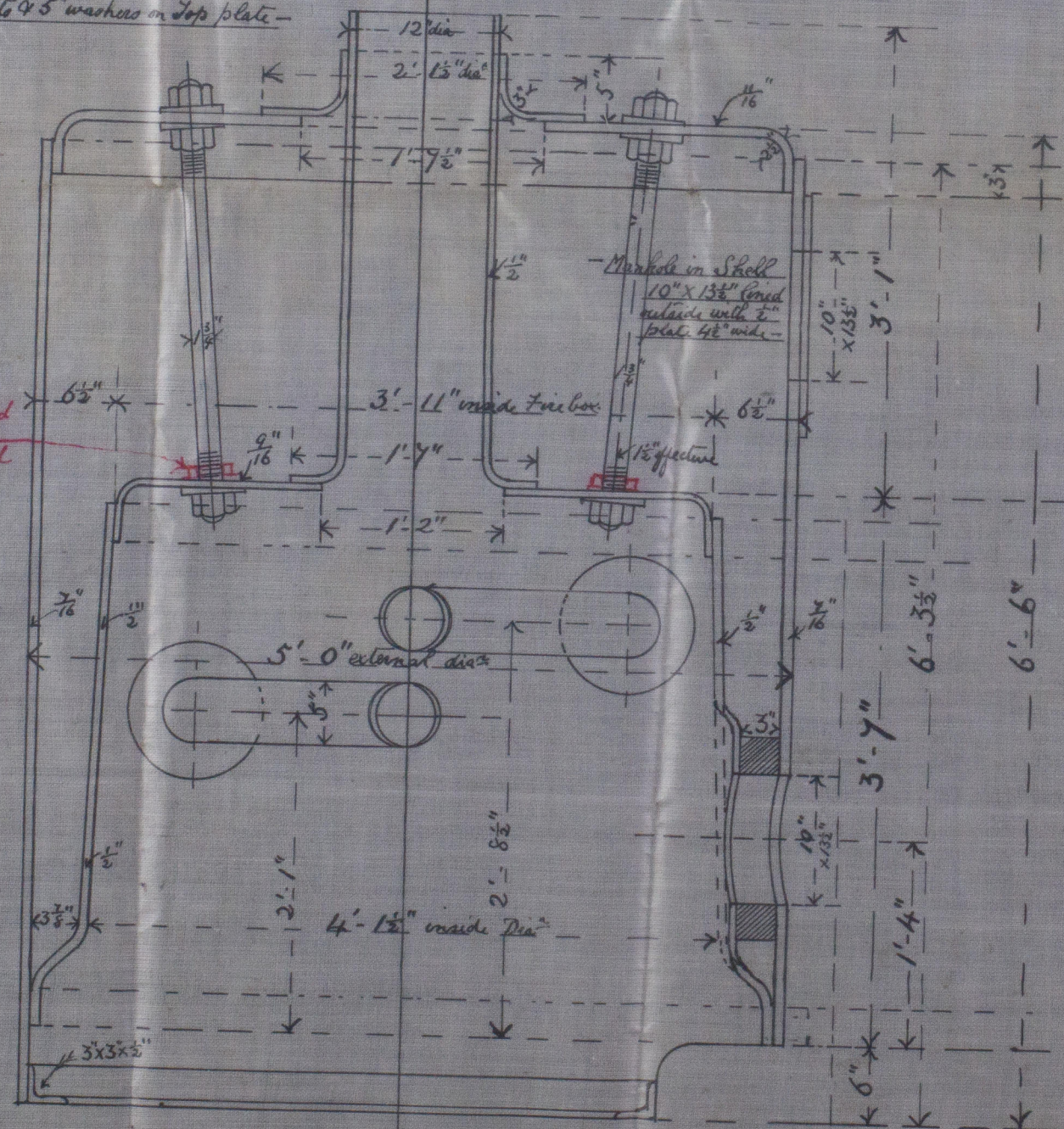


6:7:04



— 8 Vertical Stays $1\frac{1}{4}$ " dia —
in body (Steel) Screwed into Firebox one nut
filled with 2 nuts & 5" washers on top plate —



Double nuts to be fitted
at both ends of vertical
stays

Particulars of Rivetting in Shell

Longitudinal seams to be double rivetted lap joints $\frac{7}{8}$ " holes $3\frac{1}{2}$ " Pitch.

Holes to be drilled

Circumferential seams to be single rivetted lap joints $\frac{7}{8}$ " holes $2\frac{3}{8}$ " Pitch.

Holes to be drilled

— 2 Handholes $6" \times 4"$ (lined outside with $\frac{1}{2}"$ Plate) to be fitted in Shell
in way of each water tube —

— 2 Mudholes $6" \times 4"$ (lined outside with $\frac{1}{2}"$ Plate)
to be inserted in Bottom of Boiler

— Vertical Seams of Firebox to be
Single rivetted lap joints
 $1"$ holes $2\frac{3}{8}"$ Pitch.

Steel

— Donkey Boiler —

— For —

Goole Shipbuilding Co

Working Pressure 80 lbs. per sq. inch.

— Webster & Bickerton —

— Engineers & Boiler makers —

— Phoenix Foundry —

Goole.

— Scale 1 inch to a foot. —

J. G. 31/5/04

R.S.
6.7.04



© 2021

Lloyd's Register
Foundation

Donkey Boiler
sp Grace.

Hull Report 16430

mlb 3996

Donkey Boiler
Wobster Buckhorn

Boole 8000
for fuel 1.00 lb.
2.70 sp.

W596-0086



© 2021

Lloyd's Register
Foundation