

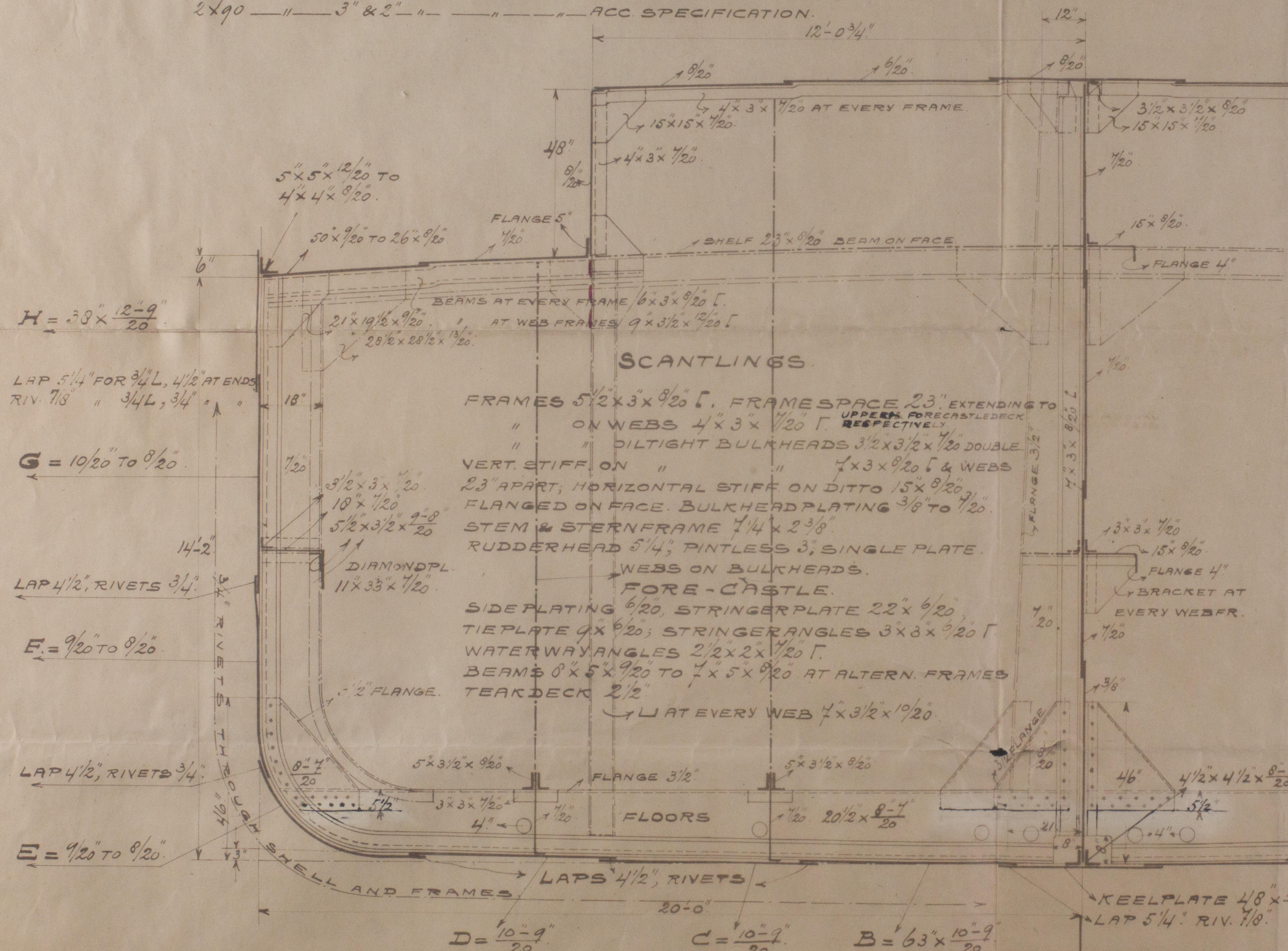
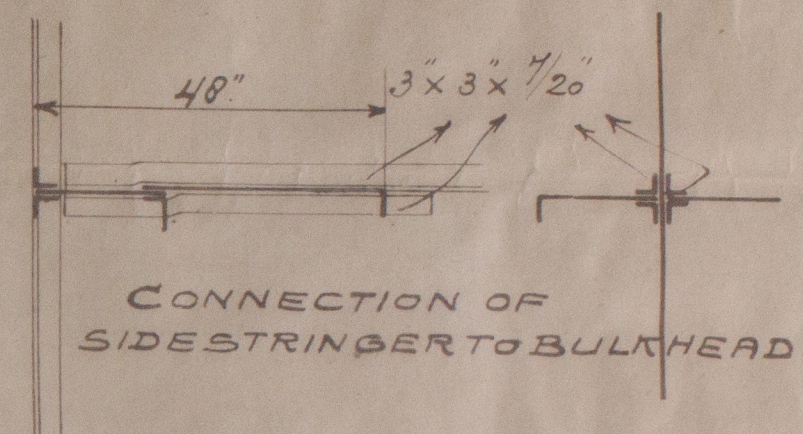


HALF BREADTH.....20, 0'  
 DEPTH.....15, 02  
 HALF GIRTH.....32, 92  
 FIRST NUMBER.....67, 94  
 SECOND "..... $67, 94 \times 216, 334 = 14698$   
 L : B = 5, 408.....L : D = 14, 403

|   |                                  |
|---|----------------------------------|
| 2 STOCKLESS BOWERS                              | 38 1/4 CWT EACH.                 |
| 1 " " " " " " " " " " " "                       | 32 1/4 " " " " " " " " " " " "   |
| 1 STREAM ANCHOR WITH STOCK                      | 11 CWT (INC. STOCK)              |
| 1 KEDGE " " " " " " " " " " " "                 | 5-2-14 (" " " " " " " " " " " ") |
| 2 40 FATHOM 1 1/16" STUD CHAINCABLE             | 388 CWT.                         |
| 45 " " 3 1/2" CIRC. STEELWIRE FOR STREAM ANCHOR |                                  |
| 90 " " 3 1/4" " " " " " " " " " " " "           | TOW LINE                         |
| 2 x 90 " " 3" & 2" " " " " " " " " " " "        | ACC SPECIFICATION.               |

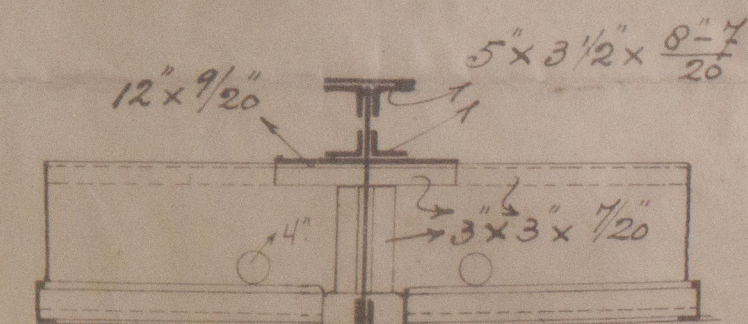
216'-4" x 40'-0" x 14'-2 1/4."

Widdship-section. Scale 1:24.



KEELPLATE TREBLE RIVETED BUTTLAPS FOR  $\frac{1}{4}L$ .  
SHEERSTRAKE ———— " ————  $\frac{3}{4}L$ ,  
DOUBLE AT ENDS.  
ALL REMAINING SHEELPLATING TREBLE RIVETED  
BUTTLAPS FOR  $\frac{1}{2}L$ , DOUBLE AT ENDS. QUADRUPLE  
WHEN OVER RULE BREADTH.  
FORE-CASTLE PLATING, DOUBLE RIV BUTTLAPS  
UPPERDECK STRINGER PLATE, TREBLE RIV. BUTTLAPS  
FOR  $\frac{1}{2}L$ , DOUBLE AT ENDS  
REMAINING DECKPLATING, DOUBLE RIV. BUTTLAPS IN  
WAY OF OILTANKS, SINGLE AT ENDS.  
STRINGER AND TIEPLATE OF FORECASTLE, DOUBLE  
RIV BUTTLAPS  
SEAMS & BUTTLAPS OF OILTIGHT BULKHEADS  
DOUBLE RIV.  
TRUNKPLATING SINGLE RIV. SEAMS, DOUBLE RIV.  
BUTTLAPS.

CENTRE KEELSON  
IN FORE & AFTER BODY



CONNECTION OF  
FLOORS TO  
CENTRE LINE BULKHEAD

C.B.  
25-5-58



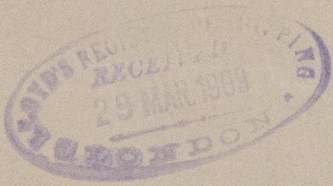
© 2021

Lloyd's Register  
W596-0035 Foundation



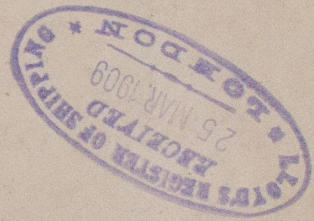
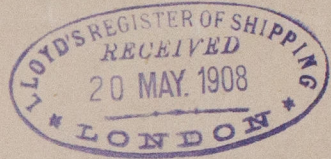
N: 90

Midship Section



Strecht

Amo H154.



RETAIN

W596-0035



© 2021

Lloyd's Register  
Foundation