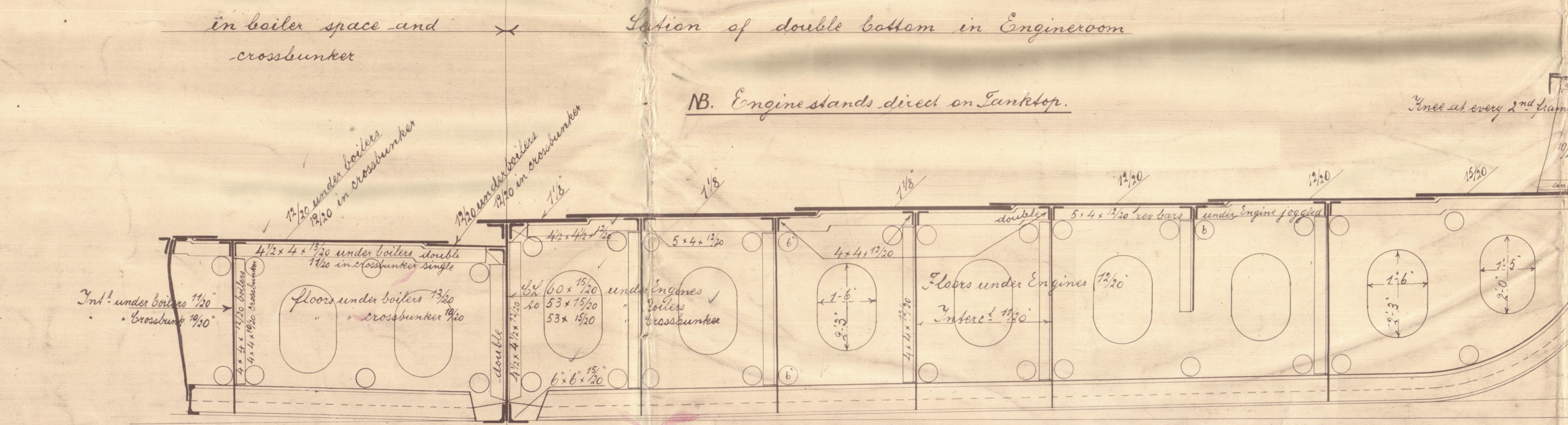
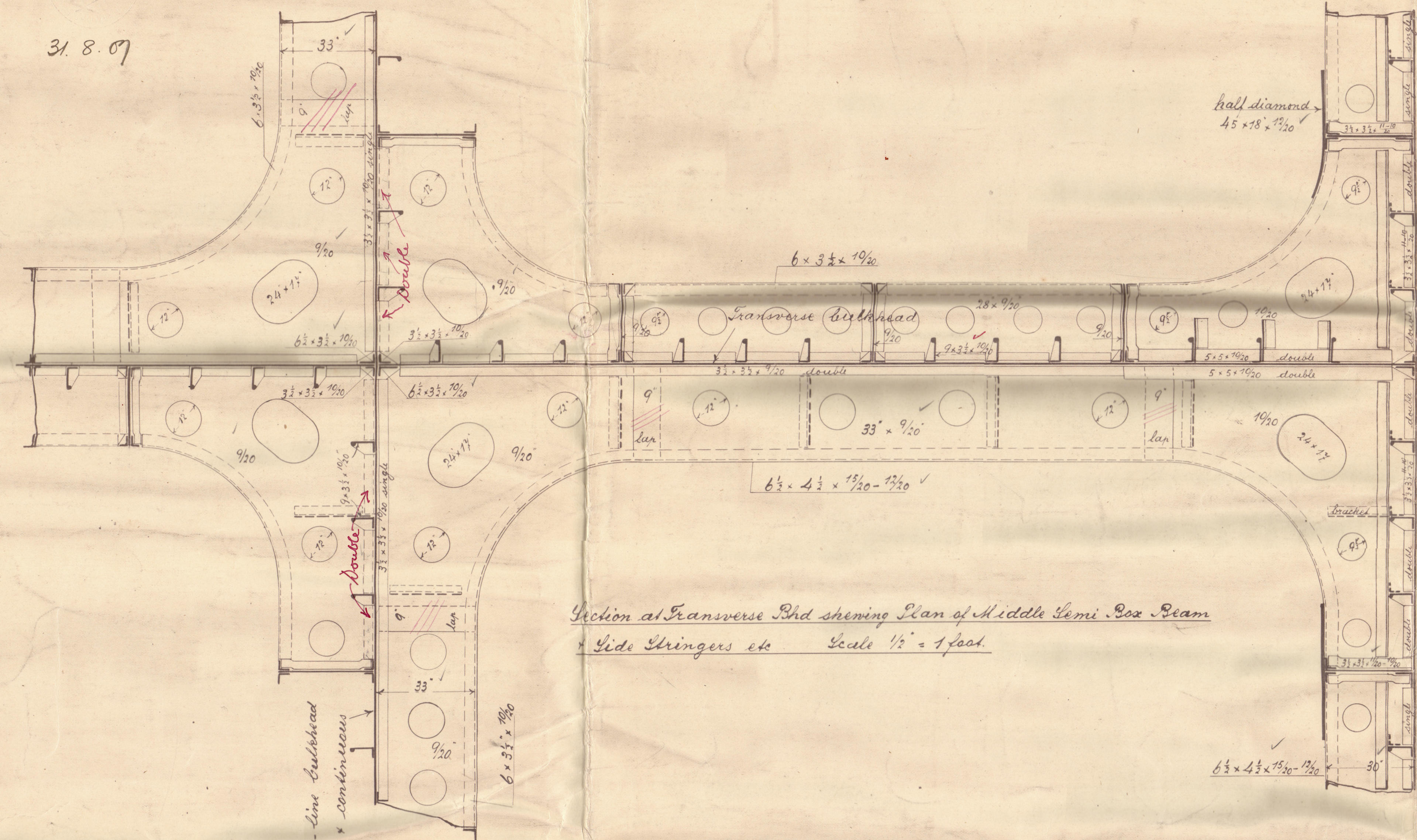
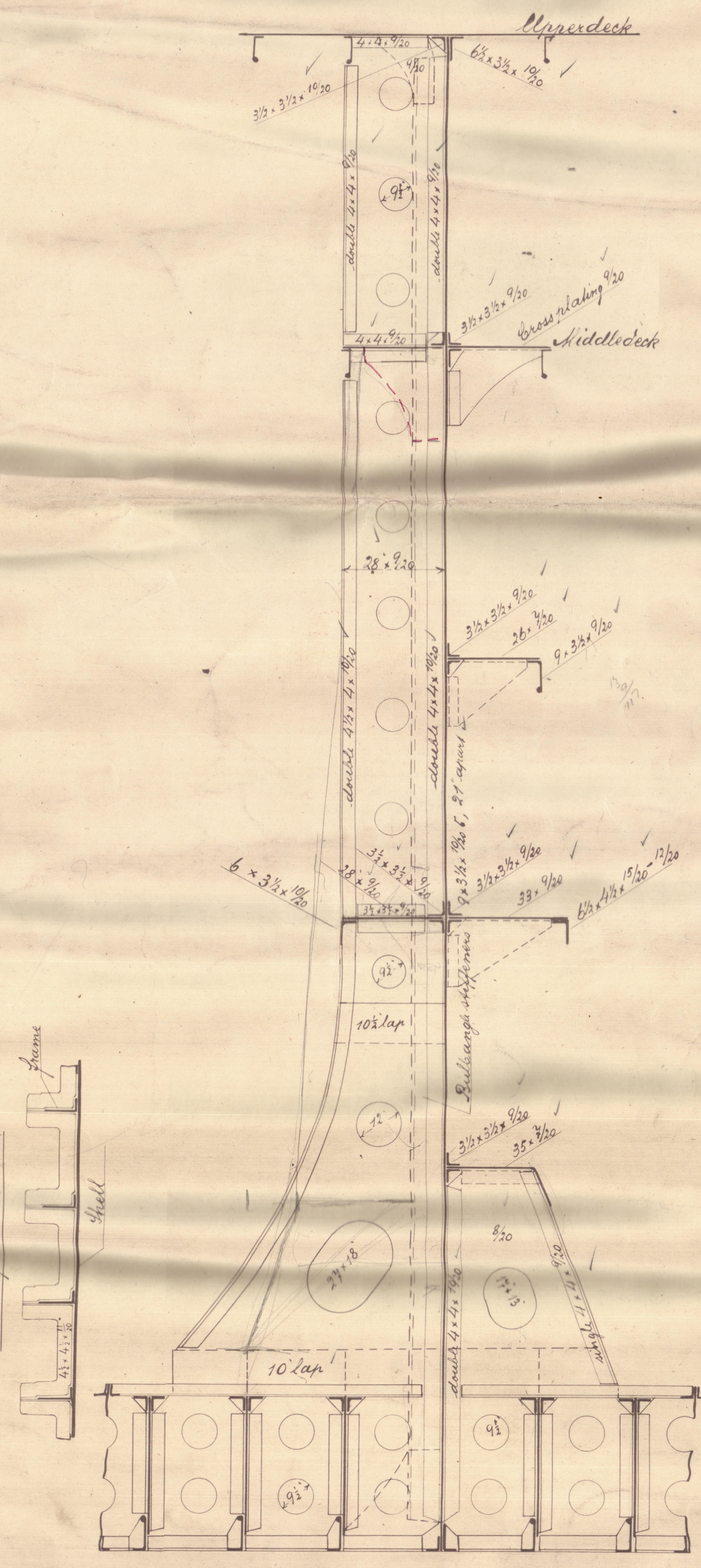


31.8.07



Nº277.



Section of Transverse Bulkhead

EQUIPMENT Nº 58758

- 3. Lower Anchor (Bottom) 2 6 1/2 tons at stock
- 1. Stream 22
- 1. Ridge 10
- 300. Lashings steel link chain cable 2 1/2 tons
- 120. steel wire rope 3 1/2 tons
- 130. 1/2" 1/2"
- 5 to 100. Manila 8

OILTANK AND GENERAL CARGO STEAMER Nº 277

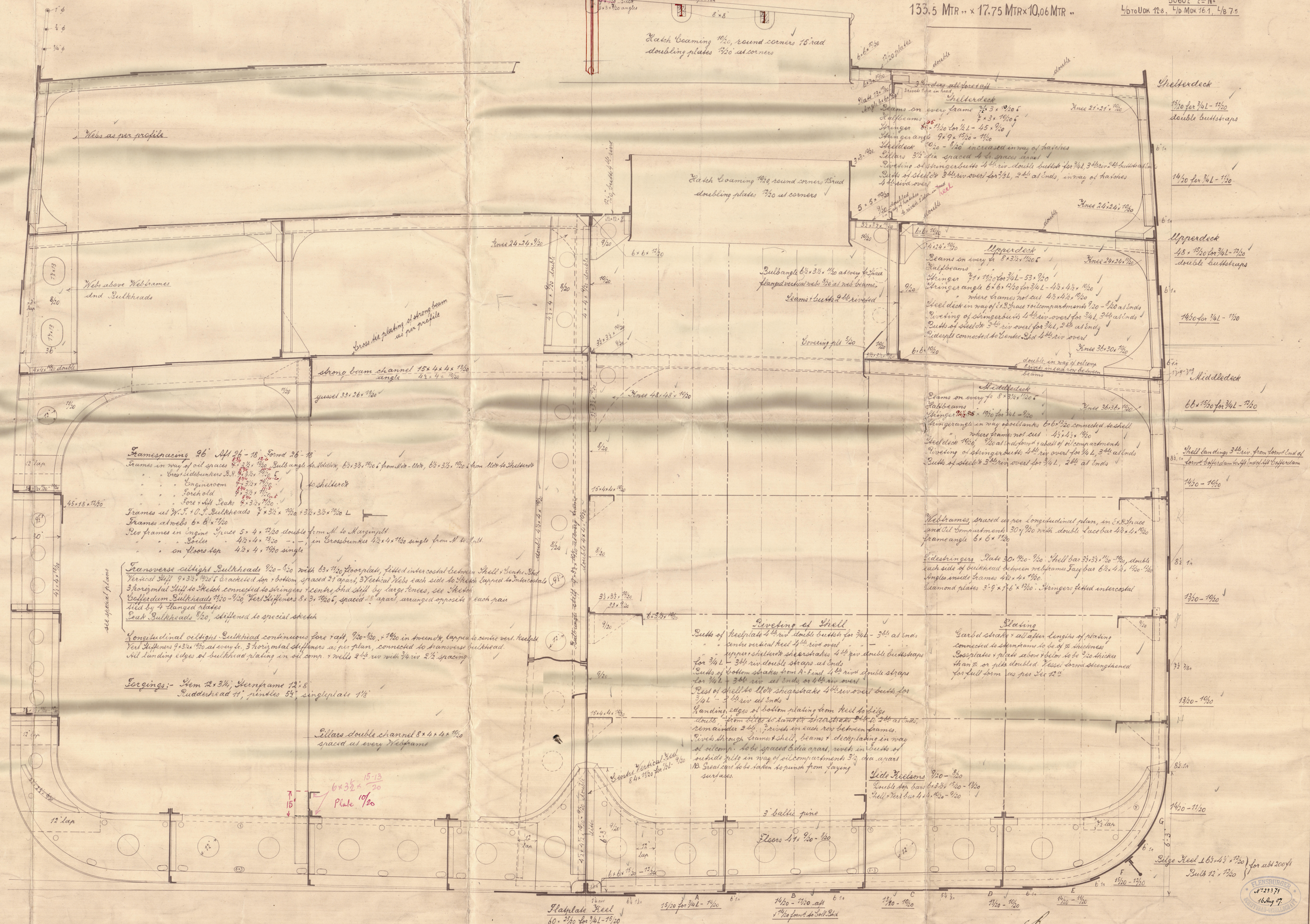
SCALE 1:24. MATERIAL STEEL

CLASS 100A.1. BRITISH LLOYD

DIMENSIONS: 440'-0" BET PP. x 58'-3" x 33'-0" MLD to UK

135.5 MTR. x 17.75 MTR x 10.06 MTR.

18 29.0
26 39.5
LD 34.6
123.33
115.53 1" N
60602 2" N
1/10 DOK 12.8 1/10 DOK 12.1 1/10 7.5



Nº277.

Transverse Section

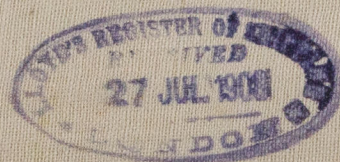
Klensburg. Schif. Ges

Oilsteamer

No 244

Ham. Letter 19/8/04

S/S "Niagara" Ham Rpt 10368



© 2020

Lloyd's Register
Foundation