

131729
MIDSHIP SECTION

N^o 570.

LENGTH B.P. 306'-0"
BREADTH M^d 43'-9"
DEPTH M^d 21'-0"
CLASS 100 A.I. LLOYDS

SCALE 3/4" = 1 FOOT

EQUIPMENT NUMERALS

L (B+D) 19933.00
R.O. DECK 176.66 4.75 1839.13
FORECASTLE 33.5 7.25 182.15
CASING 54.0 7.0 199.00
SAFETY HOUSE 10.35 7.25 59.00
OFFICERS HOUSE 11.5 7.25 41.09

EQUIPMENT N^o 21244

NUMERALS

LENGTH ON L.W.L. 315'-5"
BREADTH MOULDED 43'-7 1/2"
DEPTH MOULDED TO MAIN DECK 21'-20"
L D 6568
L (B+D) 19933
Q TO UPPER DECK 18.5'
Q TO QUARTER DECK 23.25'
Q TO UPPER DECK 14.20'
Q TO QUARTER DECK 11.63'

EQUIPMENT N^o 21244

2 POWER ANCHORS 43 CWT EACH STOCKLESS
1 BOW ANCHOR 353 CWT STOCKLESS
1 STREAM ANCHOR 11 CWT EX STOCK
240 FATHOMS 1 1/2" STUD CHAIN CABLE
75 FATHOMS 4" STEEL WIRE IN LIEU OF STREAM CHAIN
100 FATHOMS 4" STEEL WIRE
2 2 1/2" 40 12 1/2" 40
2 2 1/2" 40 12 1/2" 40
1 2 1/2" 40 12 1/2" 40 (OWNERS REQUIREMENTS)
3 2 1/2" 40 12 1/2" 40

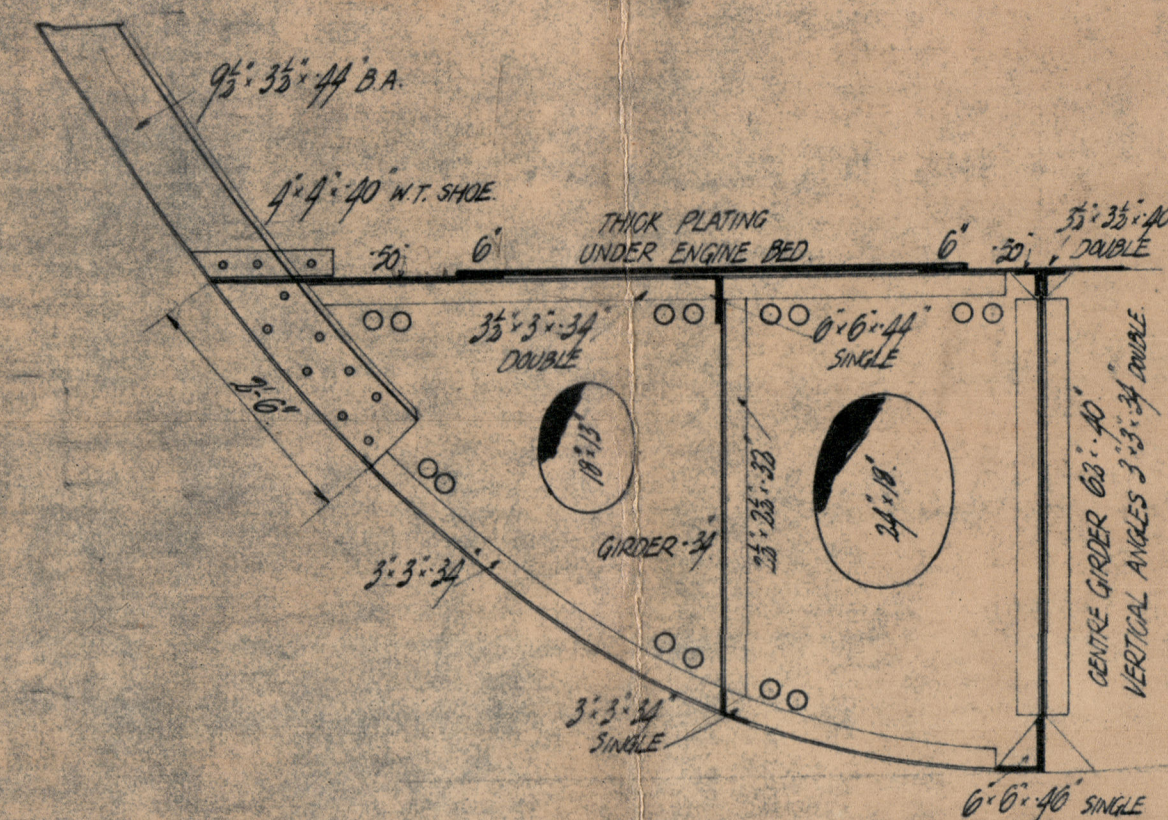
STERN FRAME - RUDDER POST 8' 2 1/2" PROPELLER POST 9' 5 1/2"
STEM BAR 8' 3 1/2" RUDDER PLAN TO BE SUBMITTED

DOUBLE BOTTOM

FLOORS ON EVERY FRAME IN HOLDS & IN ENGINE ROOM 3 1/2" 3 1/2" 44" IN BOILER SPACE
IN PEAKS 4 1/2" FLANGED
FRAMES IN DOUBLE BOTTOM 3 1/2" 3 1/2" 34" DOUBLE FORWARD OF 1/2" LENGTH
REVERSE FRAMES ON FLOORS 3 1/2" 3 1/2" 34" SINGLE IN HOLDS
3 1/2" 3 1/2" 34" DOUBLE UNDER ENGINES & THRUST BLOCK
3 1/2" 3 1/2" 34" SINGLE IN BOILER ROOM & 3 1/2" 3 1/2" 44" DOUBLE UNDER BOILER CHIMNEYS
INTERCOSTAL GIRDER 3 1/2" (4 IN BS) VERTICAL CONNECTIONS 2 1/2" 3 1/2" 34" 40" N.B.S.
GIRDER TOP & BOTTOM BARS 3 1/2" 3 1/2" 34" TOP BAR 44" IN BS

OUTSIDE FLANGED BRACKETS IN WAY OF QUARTER DECK 40"
3 1/2" FLANGE & 4 1/2" LAP ON FRAME 8" 1/2" RIVETS
ANGLE CONNECTION TO MARGIN PLATE 3 1/2" 3 1/2" SINGLE - 7 1/2" RIVETS EACH FLANGE
LUG 3 1/2" 6 1/2" 3 1/2" (44 IN BS) ON OPPOSITE SIDE ON EVERY SECOND FRAME IN LIEU OF GUSSETS

SECTION THROUGH DOUBLE BOTTOM IN WAY OF ENGINE ROOM ENGINES AFT



E, F, G, H STRAKES 50" FOR 1/2" LENGTH TO 44" (RULE 49 TO 41)
41" IN PEAKS BUTTS OVERLAPPED & TREBLE RIVETED TO DOUBLE IN PEAKS

QUARTER DECK SHEER STRAKE 50" FOR 1/2" LENGTH TO 41" AT END BUTTS OVERLAPPED & TREBLE RIVETED THROUGHOUT

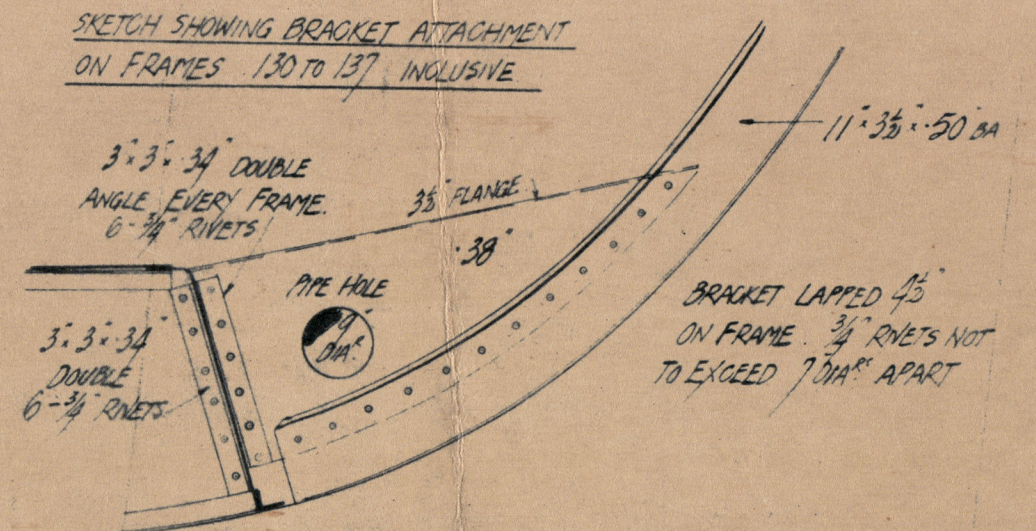
10" 50" FOR 1/2" LENGTH TO 41" AT END BUTTS OVERLAPPED & TREBLE RIVETED THROUGHOUT

A, B, C, D STRAKES 50" FOR 1/2" LENGTH TO 44" (RULE 49 TO 41)
41" IN PEAKS BUTTS OVERLAPPED & TREBLE RIVETED FOR 1/2" LENGTH TO TREBLE & DOUBLE RIVETED AT ENDS

45" 60" FOR 1/2" LENGTH TO 50" AT ENDS SINGLE OUTSIDE STRAKES 8 1/2" 1/2" TREBLE RIVETED

A, B, C, D STRAKES 50" FOR 1/2" LENGTH TO 44" (RULE 49 TO 41)
41" IN PEAKS BUTTS OVERLAPPED & TREBLE RIVETED FOR 1/2" LENGTH TO TREBLE & DOUBLE RIVETED AT ENDS
A, B, C STRAKES 50" TO COLLISION BULKHEAD

OUTSIDE FLANGED BRACKETS IN WAY OF UPPER DECK 40" 1/2" FLANGE & 4 1/2" LAP ON FRAME 8" 1/2" RIVETS
ANGLE CONNECTIONS TO MARGIN PLATE 3 1/2" 3 1/2" SINGLE - 6" 1/2" RIVETS EACH FLANGE
LUG 3 1/2" 6 1/2" 3 1/2" ON OPPOSITE SIDE ON EVERY SECOND FRAME IN LIEU OF GUSSETS



131729
31 AUG 1917
LLOYD'S REGISTER
W593-0141

1

Hawthorn Leslies

570

Midship section

S.S. "KIRKWOOD".

NEWCASTLE ON TYNE.

Report No. 85288.

REMAIN



© 2020

Lloyd's Register
Foundation

W593-0149