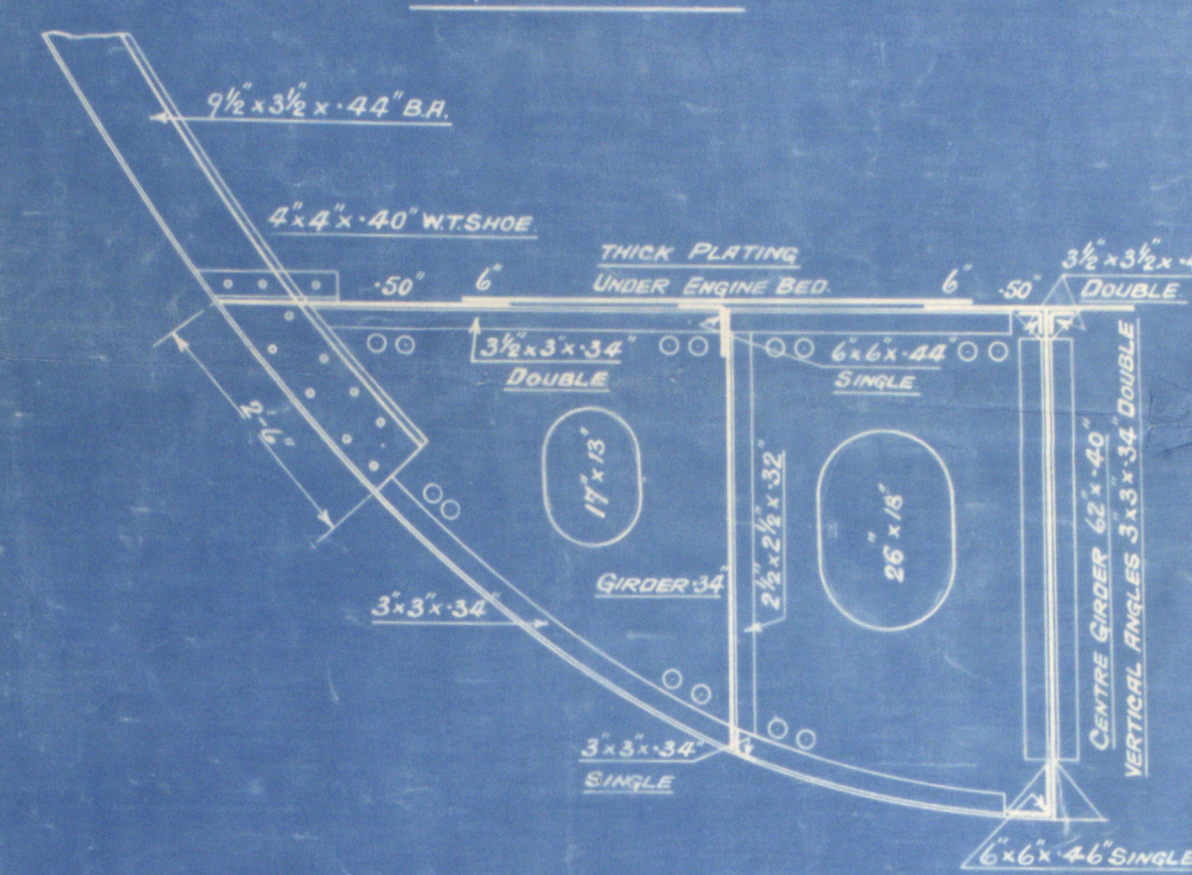
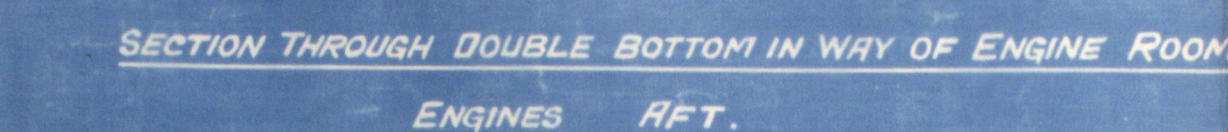


<u>LENGTH B.P.</u>	<u>306'-0"</u>
<u>BREADTH MLD</u>	<u>43'-9"</u>
<u>DEPTH MLD</u>	<u>21'-6"</u>
<u>CLASS 100 R.I. LLOYDS</u>	

SCALE $\frac{1}{2}'' = 1 \text{ FOOT}$

L (B + D)	19933.00
R.O. DECK 176'-66" x 475'	= 839.13
FORECASTLE 33'-5" x 7'-25" x 3/4	= 182.15
CABING 54'-0" x 7'-0" x 1/2	= 189.00
SALOON HOUSE 16'-25" x 7'-25" x 1/2	= 58.90
OFFICERS HOUSE 11'-5" x 7'-25" x 1/2	= 41.69

EQUIPMENT № 21244



SKETCH SHOWING BRACKET ATTACHMENT
ON FRAMES 130 TO 137 INCLUSIVE.

$3 \times 3 \times \frac{3}{4}$ DOUBLE
 ANGLE EVERY FRAME
 6, $\frac{1}{4}$ RIVETS

$4\frac{1}{2}$ FLANGE

38'

PIPE HOLE
 $\frac{11}{16}$

$3 \times 3 \times \frac{3}{4}$ DOUBLE

BRACKET LAPPED $4\frac{1}{2}$
 ON FRAME $\frac{3}{4}$ RIVETS NOT
 TO EXCEED 7" MIN. SPAC.

$11 \times 3\frac{1}{2} \times 50$ B.A.

FRAMES IN PERMS (7 TAB, 6 (32 TO STAY) 6" X 3" - 55 B AT 26" APART.
 * TO UPPER DECK (85 TO 10) 85" X 3" - 48 B AT 26" APART.
 * " " " (10 TO 47) 11" X 3" - 50 B AT 26" APART IN LINE OF WEB FRAMES
 * " " " (SEED TRAY, 86-88) 9" X 3" - 48 B AT 26" APART
 * TO QUARTER DECK (58-8) 10" X 3" - 45 B AT 26" APART
 * " " " (ENGINE ROOM, 7-2) 95" X 3" - 44 B AT 26" APART
 * " " " (SOLAR DECK 4 CHOICE BUNKERS) 10" X 3" - 57 B AT 26" APART
 * IN FORE PEAK RUN IN TOP FORECASTLE GUNWALL

CENTRE SANDWICH 36×46 FT. TO 38 FT. END 140 IN ENGINE ROOM 148 IN BOILER ROOM
 * BUTTE OVERLAPPING TRIMBLE RIVETED TO DOUBLE WINDSH NOT EXCEEDING 50 IN
 * TOP BUILT $41 \frac{1}{2}$ FT. TO 40 IN SINGLE 50 IN BOILER ROOM
 * * * $55 \frac{1}{2}$ IN DOUBLE 50 IN ENGINE ROOM $5 \times 5 \times 80$ DOUBLE FORWARD OF $\frac{1}{2}$ LENGTH
 * BOTTOM BRG 51×148 TO 48 SINGLE
 * * * 51×148 DOUBLE FORWARD OF $\frac{1}{2}$ LENGTH
 * VERTICAL COUNTERWEIGHT $5 \times 81 \times 58$ DOUBLE, DOUBLE IN RAISE ROSS & UNDER THRUST BLOCK 44 IN BOILER ROOM
 MIDDLE LINE STRAKE (RULL $45 \times 5 \times 81$) INCREASED TO 58 IN 50 IN HOUSE 50 IN BOILER ROOM
 TANK TOP PLATING (RULL 36 TO 38 INCREASED TO 50 TO 50 IN HOUSE 50 IN BOILER ROOM 50 IN ENGINE ROOM
 * * * 100 IN UNDER ENGINE-BUILT PLATE & THRUST BLOCK
 TANK MAIN PLATE 32×40 IN MILL & ENGINE ROOM (RULL 36) 50 IN BOILER ROOM

OUTSIDE FLANGED BRACKETS IN WAY OF
UPPER DECK .38" $3\frac{1}{2}$ " FLANGE
1 $\frac{1}{2}$ " LAP ON FRAME 8, $\frac{1}{4}$ " RIVETS
ANGLE CONNECTIONS TO MARGIN
PLATE 5"x5"x $\frac{1}{4}$ " SINGLE
6, $\frac{1}{4}$ " RIVETS EACH FLANGE
LUG 12"x6"x $\frac{1}{4}$ " .38" ON OPPOSITE SIDE ON
EVERY 3RD FRAME ABOUT $\frac{1}{4}$ " L. FROM STE
ON EVERY 2ND FRAME FORWARD OF $\frac{1}{4}$ " L.
FROM STEM IN LIEU OF GUSSETS

A.B.C.D. STRAKES .52" FOR 1/2 LENGTH TO .14" (PILE .49" TO .41")
.41" IN PERKS BOSS PLATES .55"
BUTTS OVERLAPPED 3 TREBLE RIVETED FOR
1/2 LENGTH TO TREBLE 2 DOUBLE RIVETED AT ENDS

A B C & D STRAKES - 52" FOR 1/2 LENGTH TO 44" (RULE 49" TO 41")
H IN PEAKS BUTTS OVERLAPPED & TREBLE RIVETED
FOR 1/2 LENGTH TO TREBLE & DOUBLE RIVETED AT ENDS
A B & C STRAKES - 52 TO COLLISION BULKHEAD.

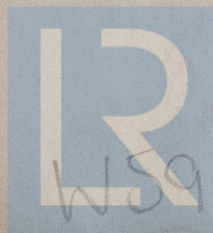
Midship Section
as built

S. S. "KIRK WOOD"

NEWCASTLE ON TYNE.

Report No. 85288.

RETAIN



© 2020

Lloyd's Register
Foundation