

Midship Section of No 200 S.S.

Dimensions 380'-0" x 48'-6" x 31'-3" Appd.

To Class 100 A. 1. 3. H. Rule.

Scale 1/2" = 1'.

35-9-02
30-9-02
Bridge Deck
17-10-02
3-12-02
6-12-02
16-12-02
24-12-02
8-1-03

Bridge 8' 3 1/2" x 3 1/2" x 20 Channels on every frame.
Toole 7' 3 1/2" x 3 1/2" x 8 1/2"
Pop 6 10/16
10/16
Turnerals.
1/2 Breadth 24' 25"
Depth 32' 25"
1/2 Girth 52' 8 3/4"
109' 3 3/4"
102' 33" Framing
102' 33" x 378' 17" 386' 98" Making 112'

Proportions
Depth to Main Bk. 15' 7 1/2"
upper 11' 7 1/2"
Breadths 7' 7 1/2"

Upper Deck

6 x 8' x 3 1/2" x 20 Channels on every frame.
Frames 7' 3 1/2" x 20" spaced 25" apart.
Recesses frames 7' 3 1/2" x 20" to upper and main bks alternately, alternately to Toole & Main Bk for 45 ft aft of Stem all to upper Bk abaft aft. Part Bk Bulkheads 20' 12"
as approved for 112' 186' 3 3/4"
Vertical Stiffs 9' 3 1/2" x 20" B.C. on 8' 19"
Bulkheads 9' 3 1/2" x 20" at 110' 38' 3/4"
9' 3 1/2" x 20" at 110' 38' 3/4" spaced 30" apart
Stem 11' 38' 3/4" Stern 11' 7 1/2" 109' 3 3/4" 112' 186' 3 3/4"

Frame

Riveting

Keel Plate double straps, treble riveted throughout.
6" longitudinal capped & double.
Tank top bulk. " " double.
Margin.
upper Bk stringer " Quad riveted for 1/2 L. Treble at ends.
Main " and Treble riveted.
Pop. Bridge & Toole. Stringer capped & double riveted.
Sheer strake capped and Quad riveted for 1/2 L. Treble at ends.
All other shell plating capped & double riveted.
Quad over rule marks

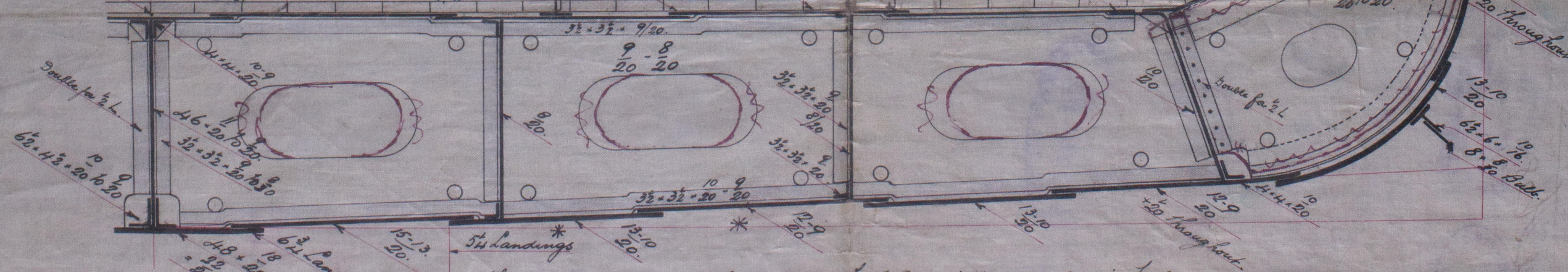
Main Bk.

7' 3 1/2" x 3 1/2" x 20 Channels on every frame

Equipment

109' 33" x 378' 17" + 8' Length = 414' 7 1/2" + 34' = 450' 4 1/2"
2 lower anchors Stockless 58 1/2 cuts
1 Stream 49 1/4 ex stock
1 Hedge 7
270 Fathoms 2 1/2 Stud Chain Cable.
90 4 1/2 Steel wire Stream
120 8' Towline
90 8' Hauler 2 off.
90 7' 2 off.

1/2 Engine space 30
Tank top Boiler 20
Holds 20 112'



Shell plating entirely within range of Tank Margin plates, excluding keel & Starboard strakes, reduced to where 20" above.
Tank frames to be doubled between 1/2 L. & Collision Bulkhead.
* These two strakes to maintain their midships thickness for 20' in Bulkhead.
Tank floors, keelson & other parts of double bottom increased to 20' in Boiler space.

J.H.L.
24/9/02

Miss Wootman Clark & Co

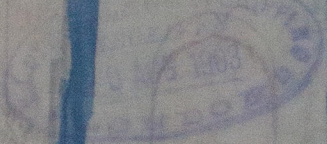
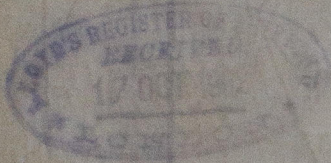
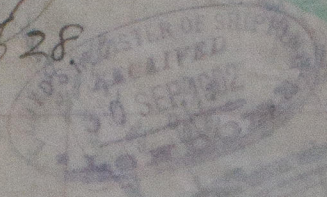
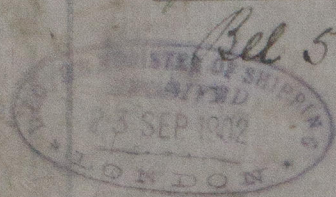
S.S. No 200.

(Star of Ireland)
Friendship Section.

To Class 100.1-1.1.

Per J.P. Corry & Co

Bel 5628.



W593-0083



© 2020

Lloyd's Register
Foundation