

# DIMENSIONS.

LENGTH OF FIRE BARS  
AREA OF FIRE GRATE  
DIAM OF TUBES OUTSIDE  
LENGTH OF TUBES  
NO OF TUBES  
SURFACE OF TUBES  
TOTAL HEATING SURFACE  
WORKING PRESSURE  
DIAM OF SAFETY VALVE

12:7:05

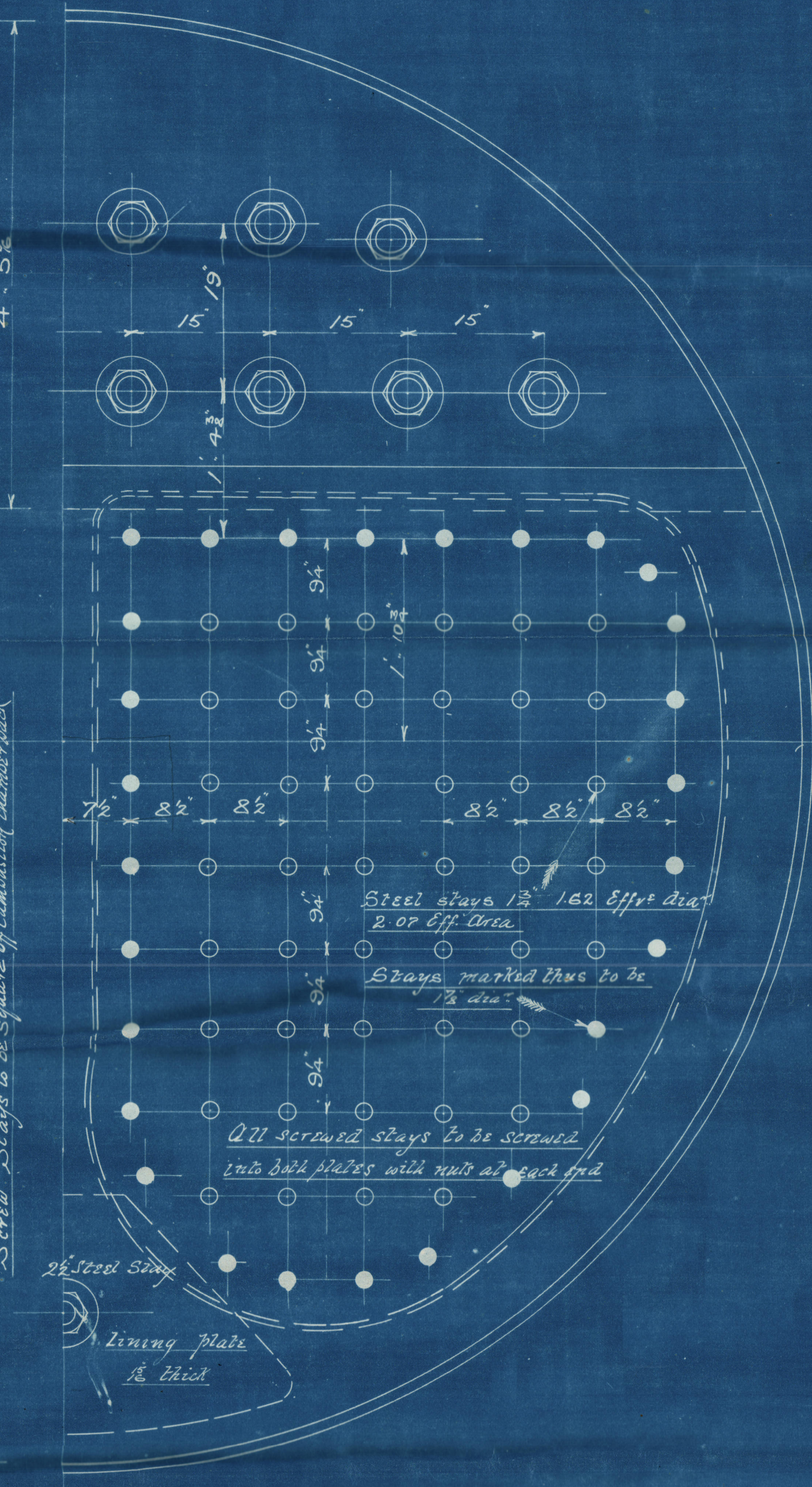
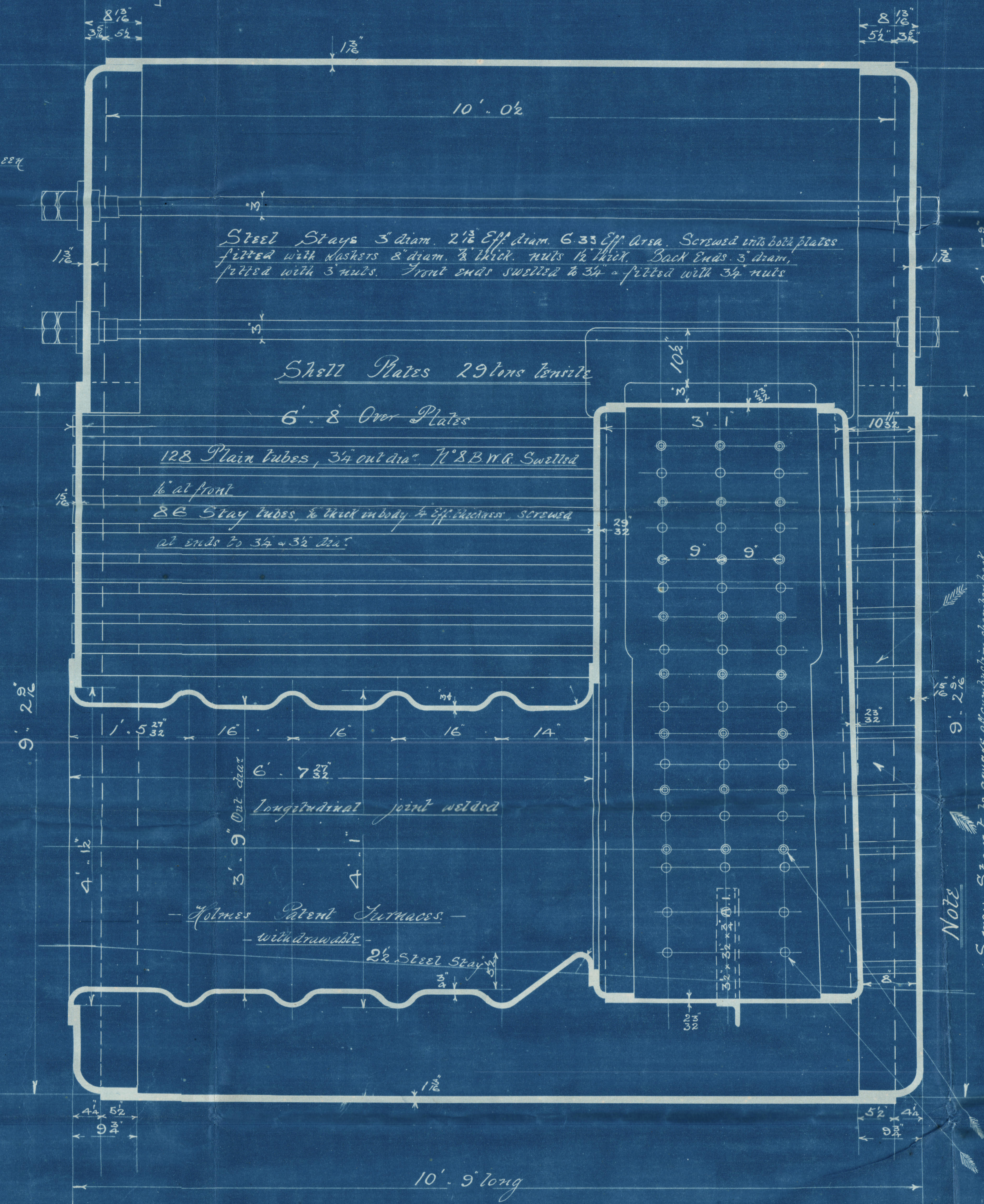
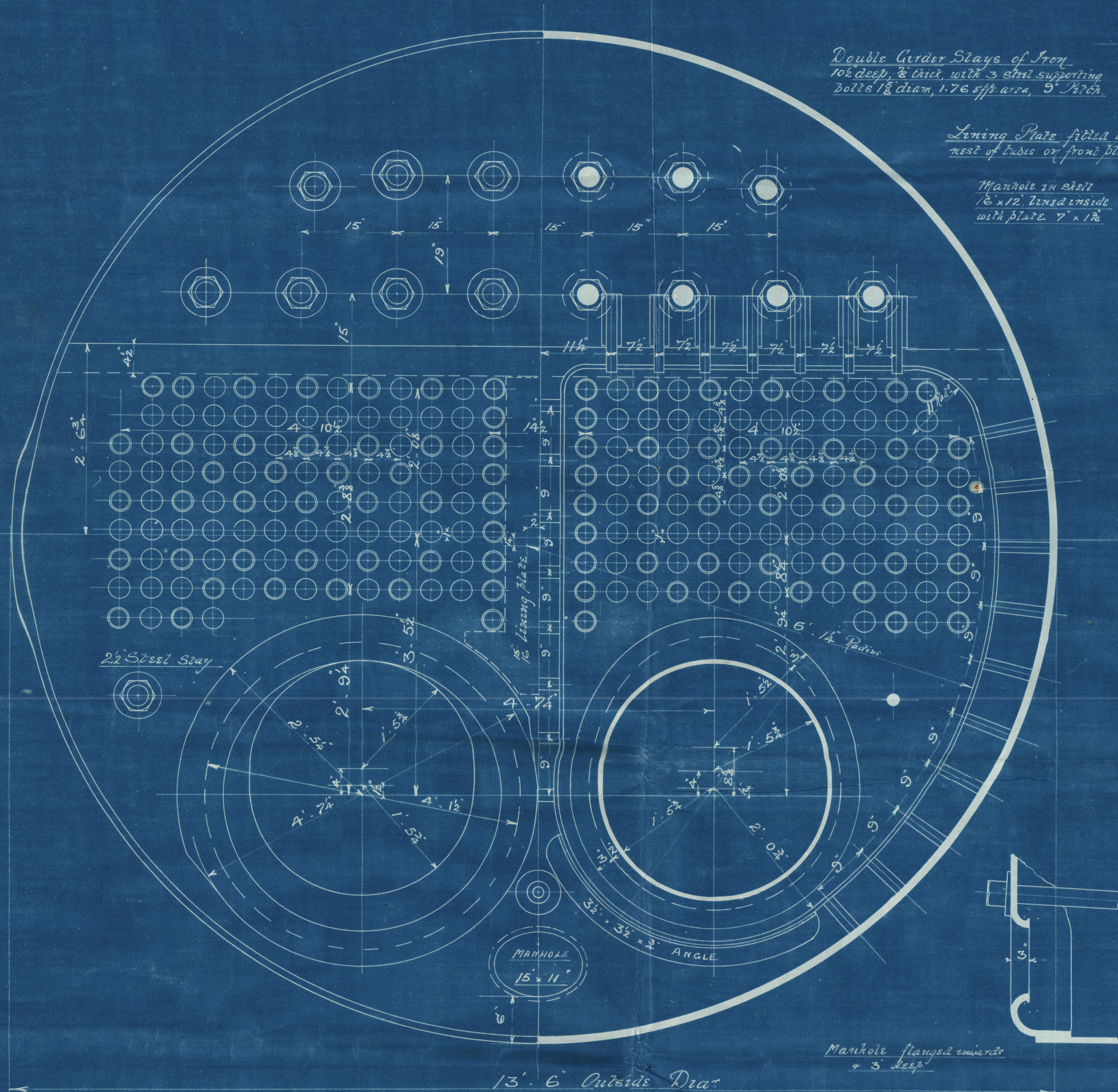
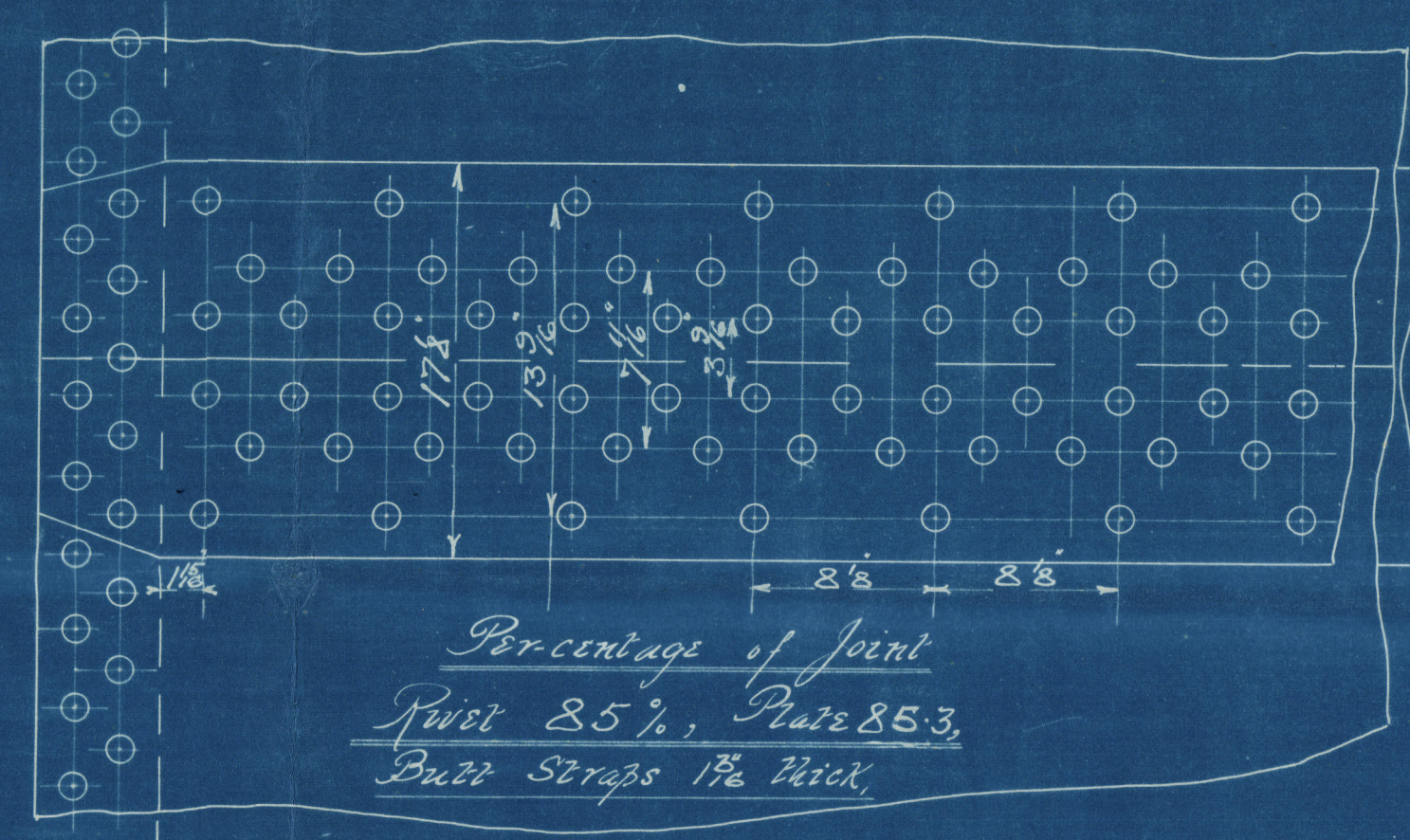
## Particulars of Rivetting

**Shell** Longitudinal seams to be double riveted double butt straps  
bolts drilled 1/8 dia, 8 1/2 pitch.  
Circumferential seams to be double riveted lap joints  
bolts drilled dia pitch.

**Comb. Chamber** To be double riveted along bottom & up stays  
to level of furnace tops. Remainder to be single riveted.

**End Plates** Cross seams to be double riveted.

**Furnaces** To be single riveted at back & bottom half of front, top half of  
front to be double riveted longitudinal joint welded.



Note  
Screw Slays to be square off remaining diameter back

Slays marked thus © to be between  
Comb Chambers & Centre  
Slays marked thus ○ to be between  
Comb Chamber & Shell

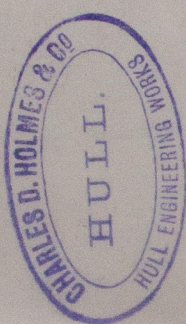
STEEL BOILER N<sup>o</sup> 777

James Barclay  
8.7.05

11.7.05

W593-0008





Messrs  
Charles D. Holmes & Co.  
Boilers No 777

Sc. H. Eske.  
Hull Report No. 17497

No 1439  
Lloyds Test.  
400 lbs.  
J.B.  
20.12.05



RETAIN

W593-0008



© 2020

Lloyd's Register  
Foundation