

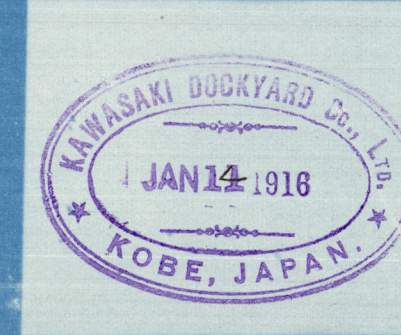
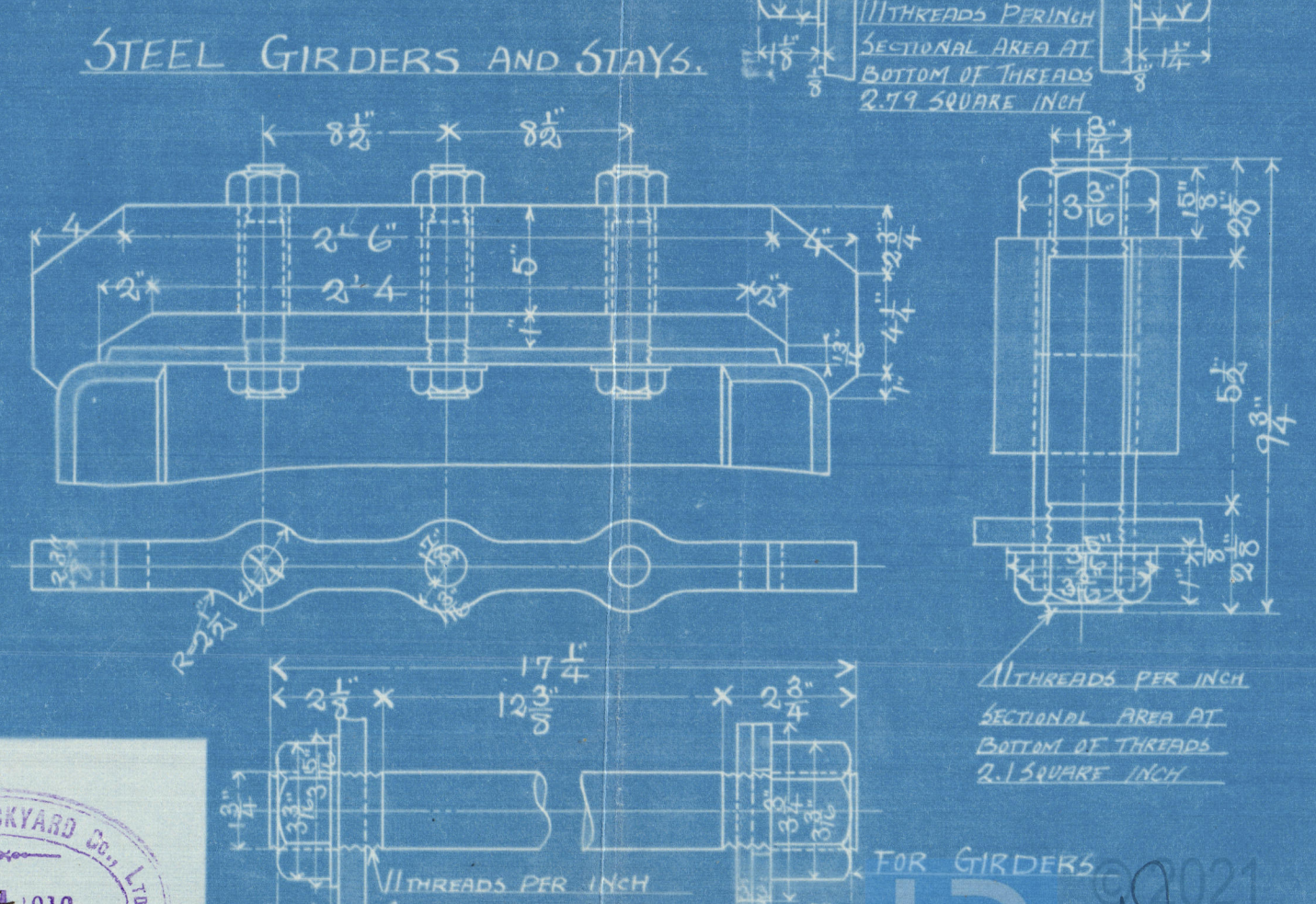
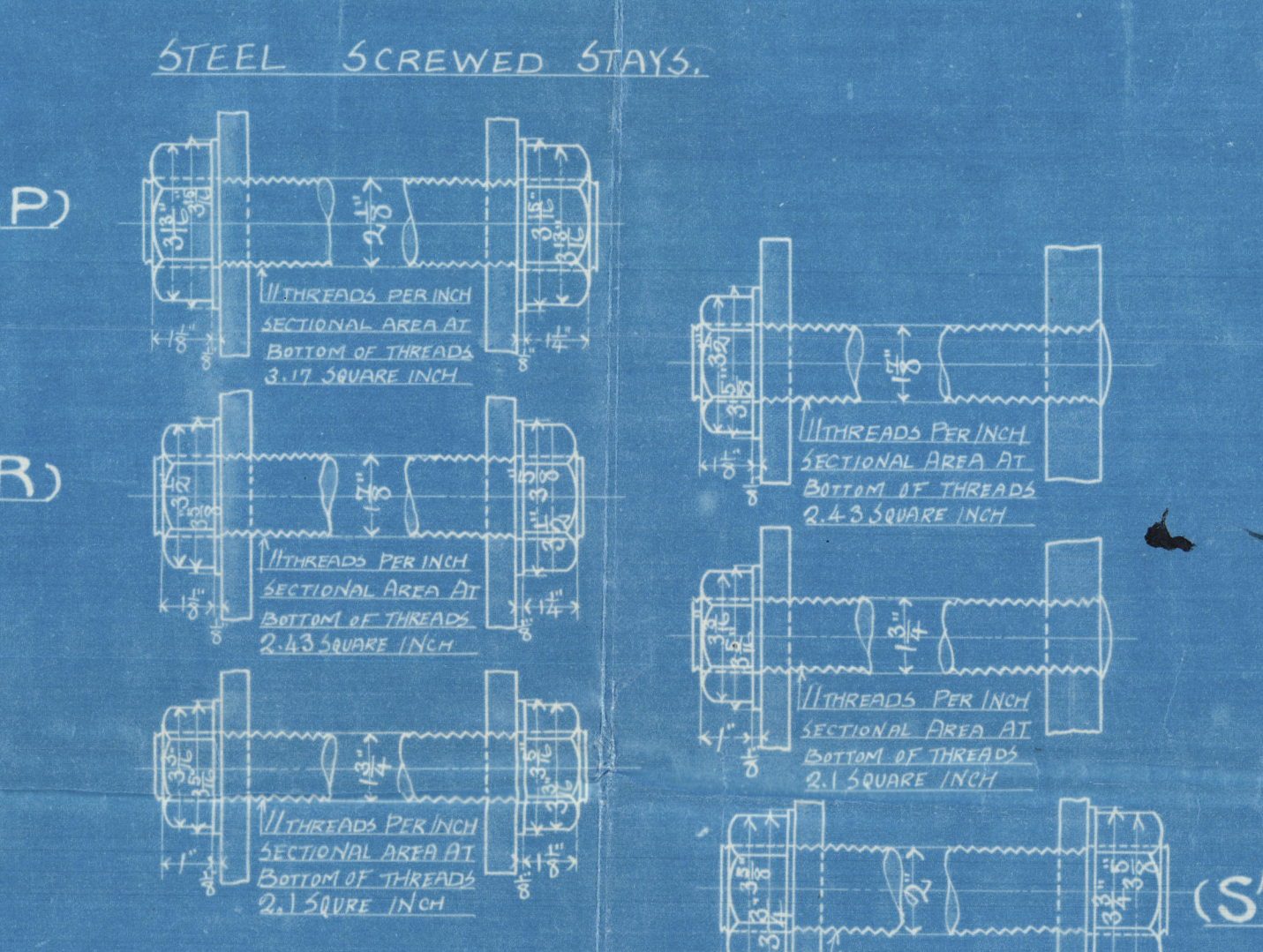
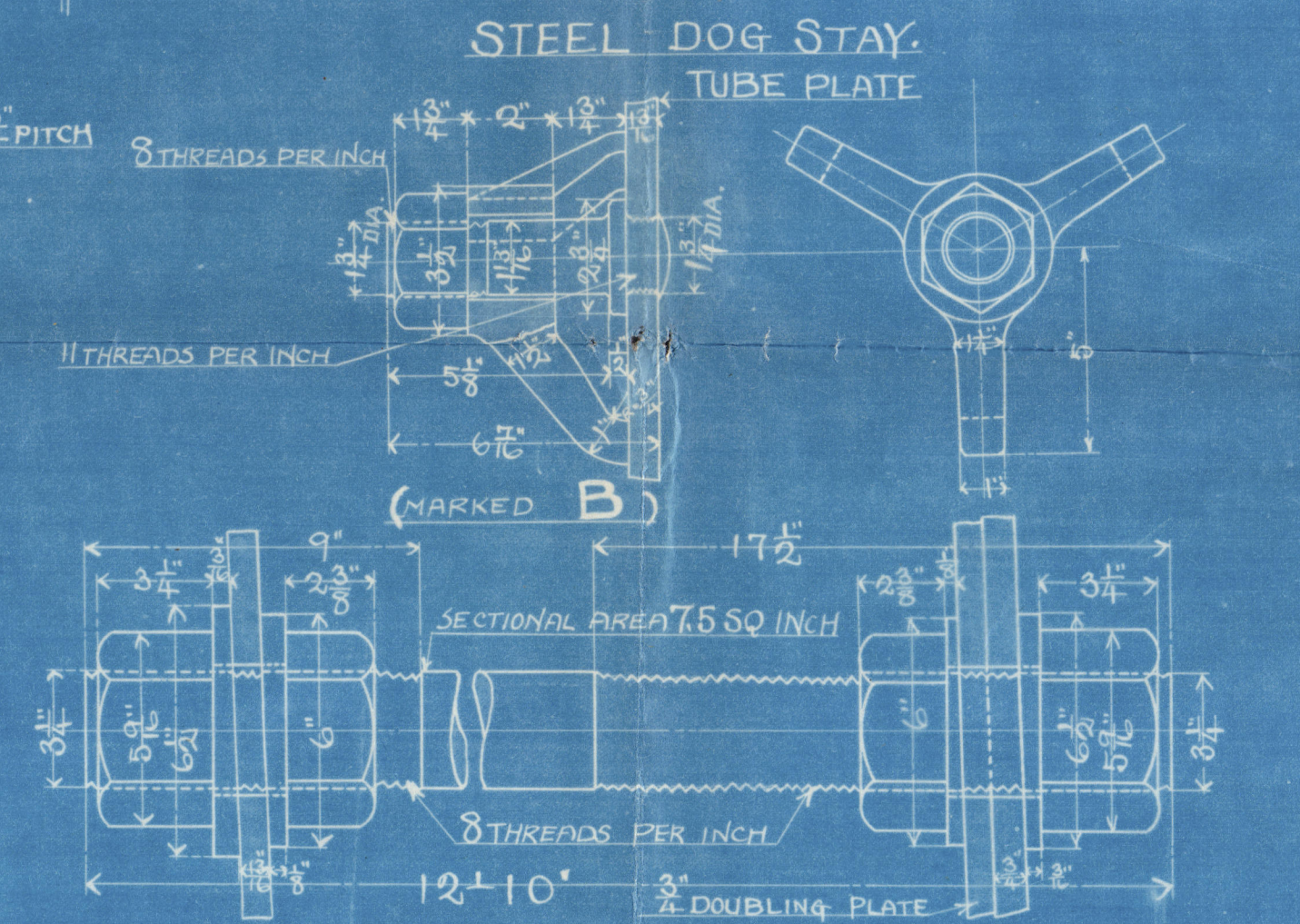
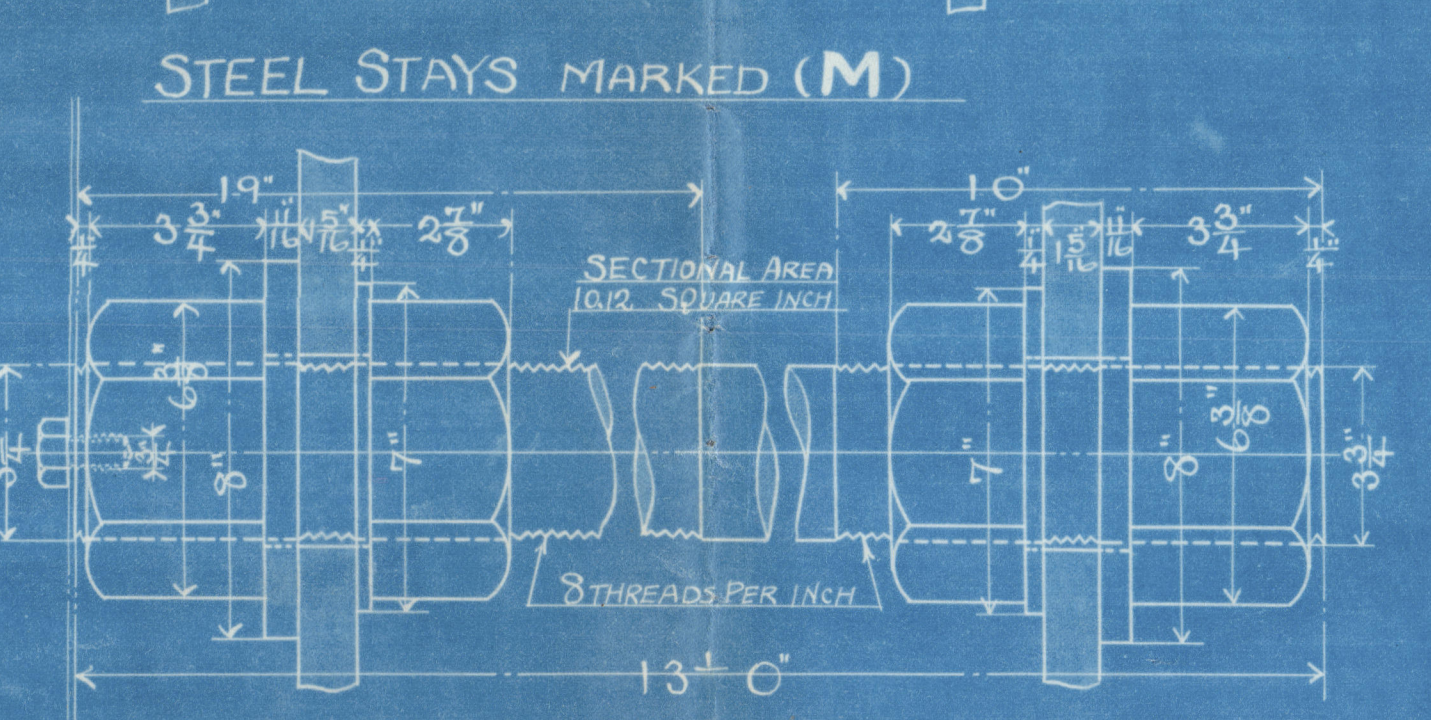
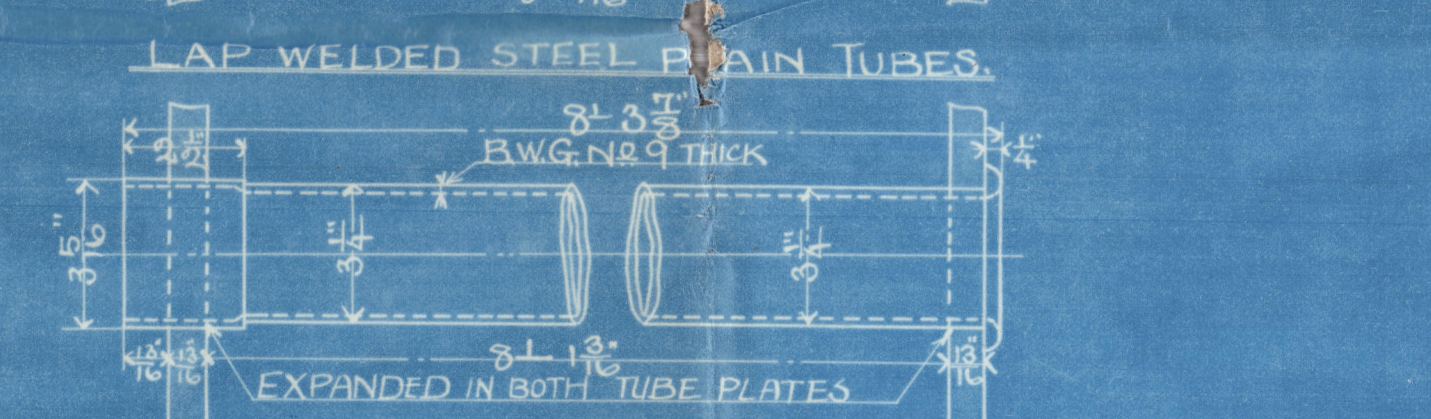
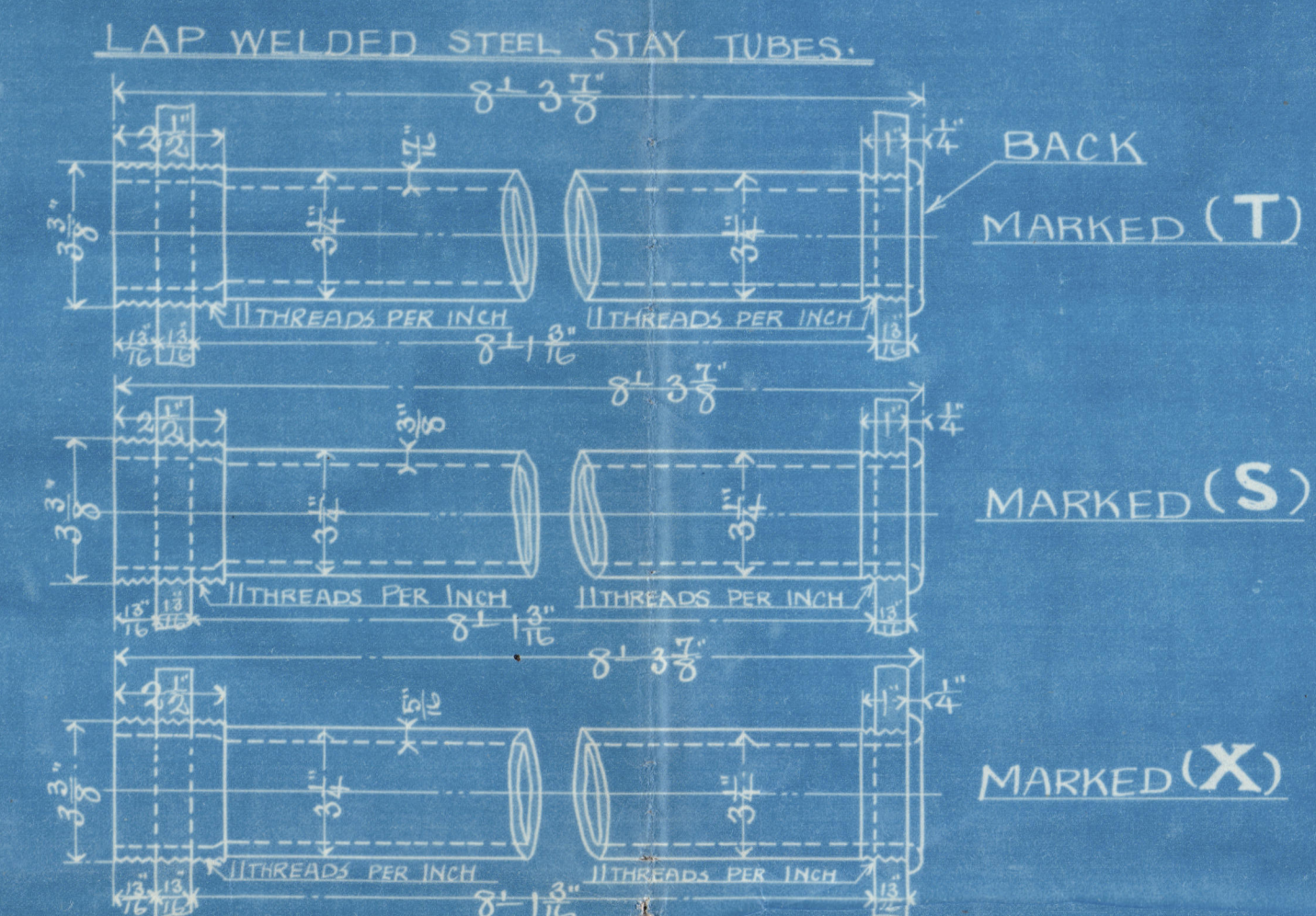
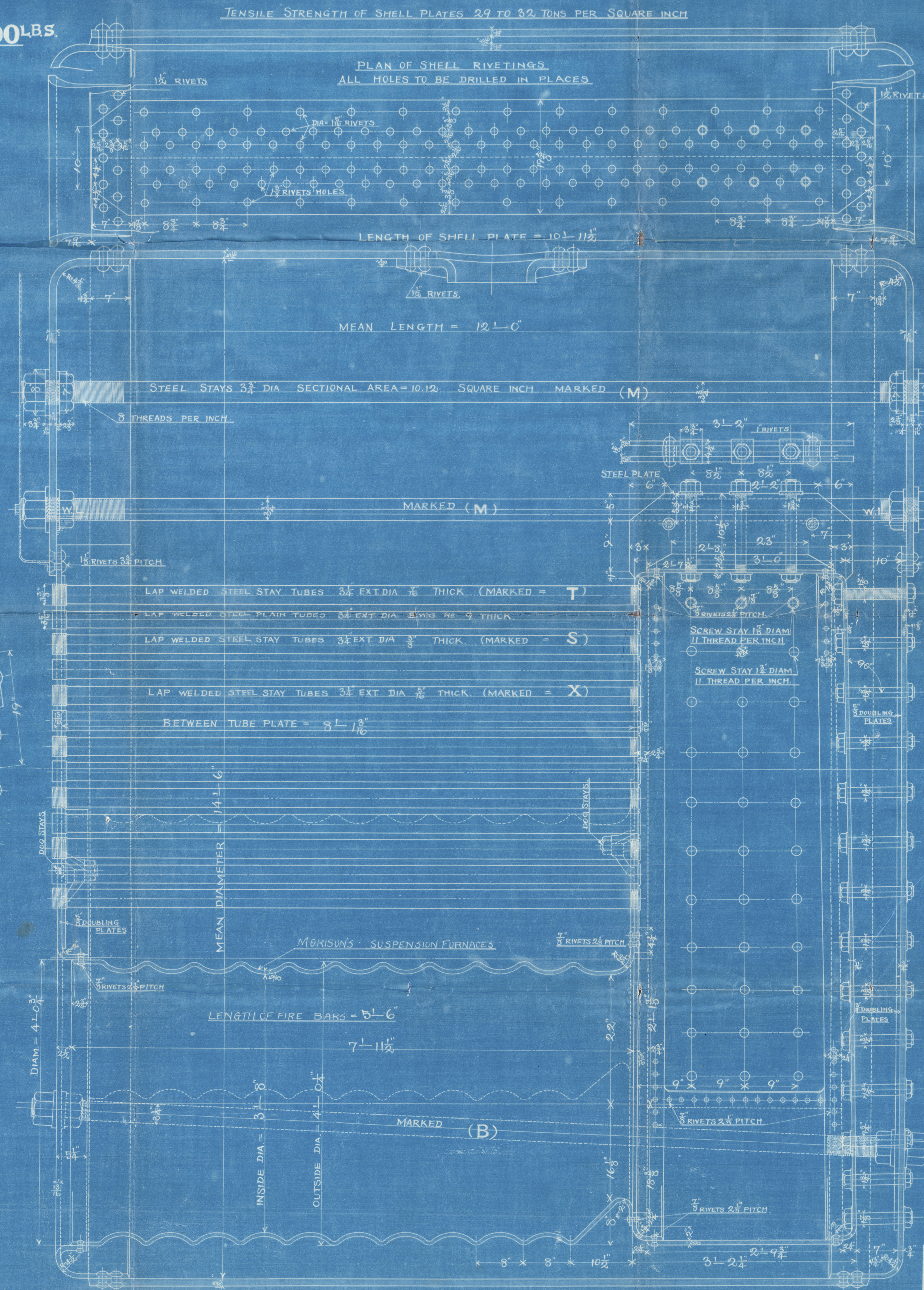
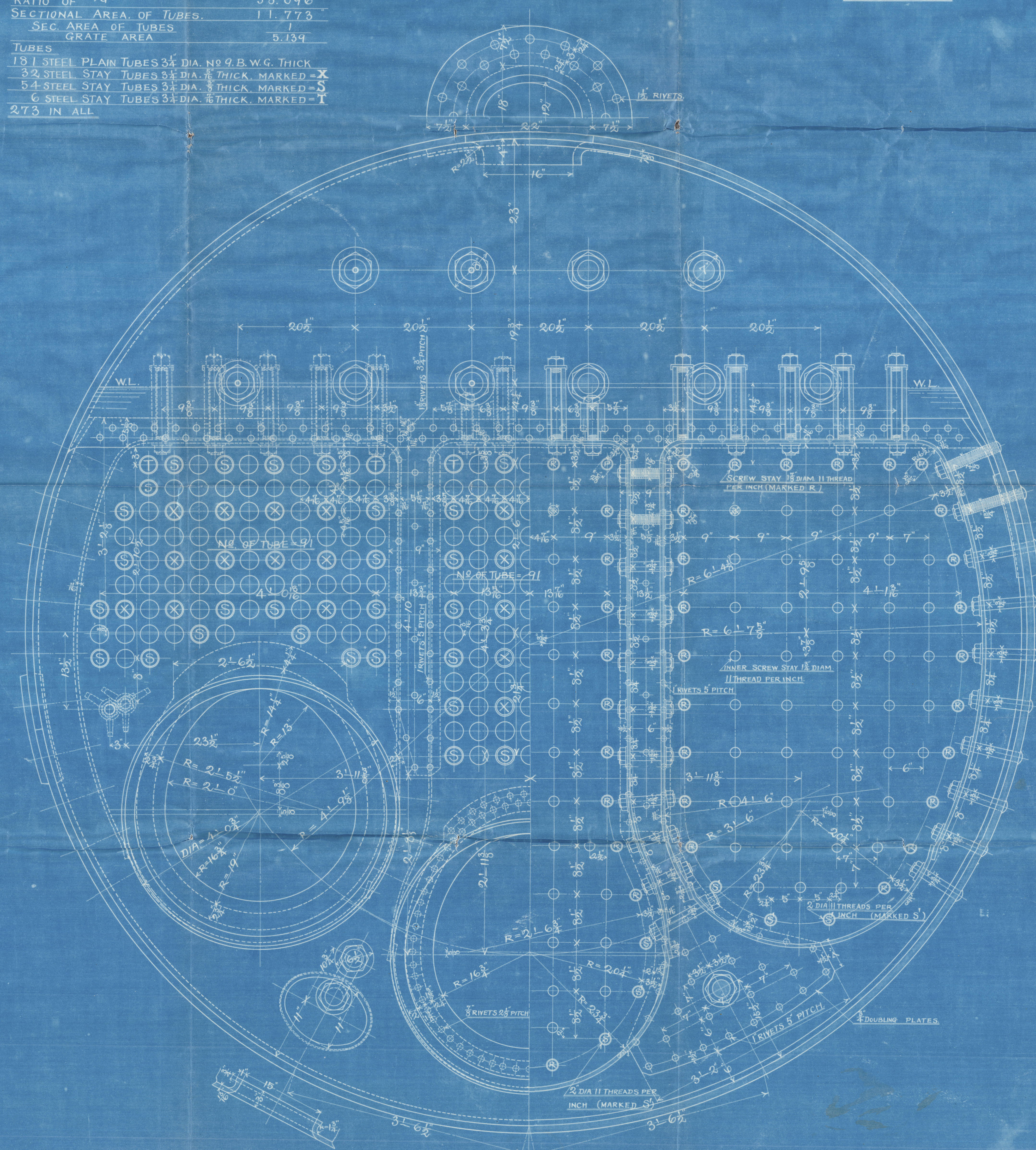
HEATING SURFACES.	1881.221 ^{sq. ft.}
TUBES.	161.053
FLUES.	216.345
FIRE BOXES.	46.205
BACK TUBE PLATES.	2304.824
TOTAL.	60.500
GRATE AREA.	33.096

RATIO OF $\frac{H}{G}$	11.773
SECTIONAL AREA OF TUBES.	1
SEC. AREA OF TUBES	5.139

TUBES
181 STEEL PLAIN TUBES $\frac{3}{4}$ " DIA. NO 9 B.W.G. THICK
32 STEEL STAY TUBES $\frac{3}{4}$ " DIA. $\frac{1}{8}$ " THICK. MARKED = X
54 STEEL STAY TUBES $\frac{3}{4}$ " DIA. $\frac{1}{8}$ " THICK. MARKED = S
6 STEEL STAY TUBES $\frac{3}{4}$ " DIA. $\frac{1}{8}$ " THICK. MARKED = T
273 IN ALL

DIA 14'-6" x 12'-0" LONG.
WORKING PRESSURE 200 LBS.

SCALE $\frac{1}{4}$ " INCH TO A FOOT.
4 THUS.



REGISTERED
DESIGN
JAN 14 1916
TOKYO, JAPAN

Kawasaki no. 388.

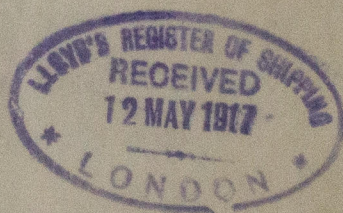
Steel Boiler.

Same as for 391.2.3.4

T. S. S. Itakodate

1st Blr tested 22/9/16

Robt Rpt No 1999



RETAIN



© 2021

Lloyd's Register
Foundation

W59270182