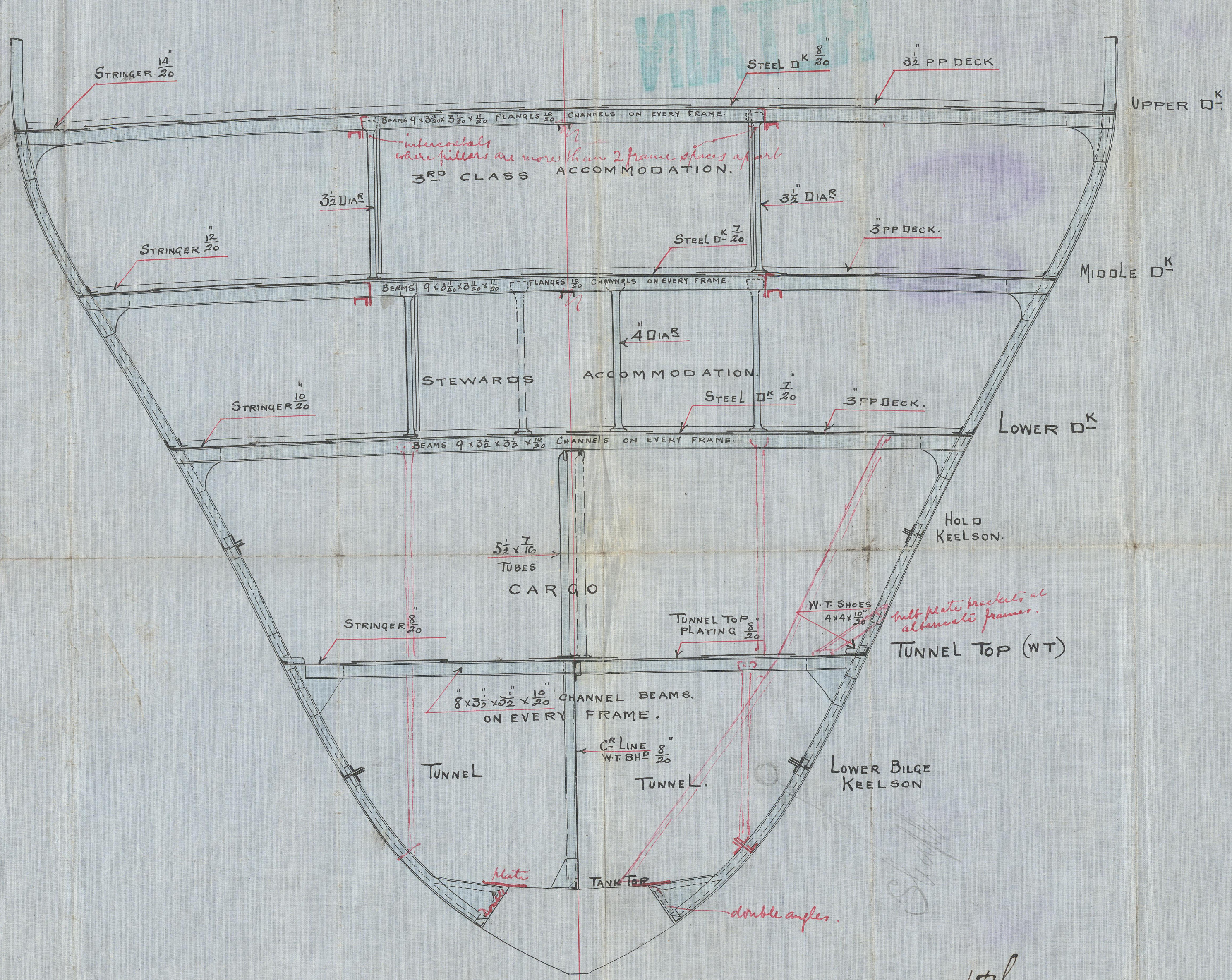


2.4.07
 73.4.07
 21.5.07



— N^o 342 —

— SECTION THRO CENTRE OF AFTER HOLD. —

— SCALE $\frac{1}{4}$ " = ONE FOOT. —

J.H.L.
 18/3/07



Belfast
Harland & Wolff's
No 342

Section through after
hold.

RETAIN



Lloyd's Register
Foundation

W590-0107