

<sup>4</sup>Walmer Castle<sup>4</sup>

TO CLASS 100 A1 AT LLOYDS THREE DECK RULE

SCALE  $\frac{1}{2}" = 1 \text{ FOOT}$ .

## NUMERALS

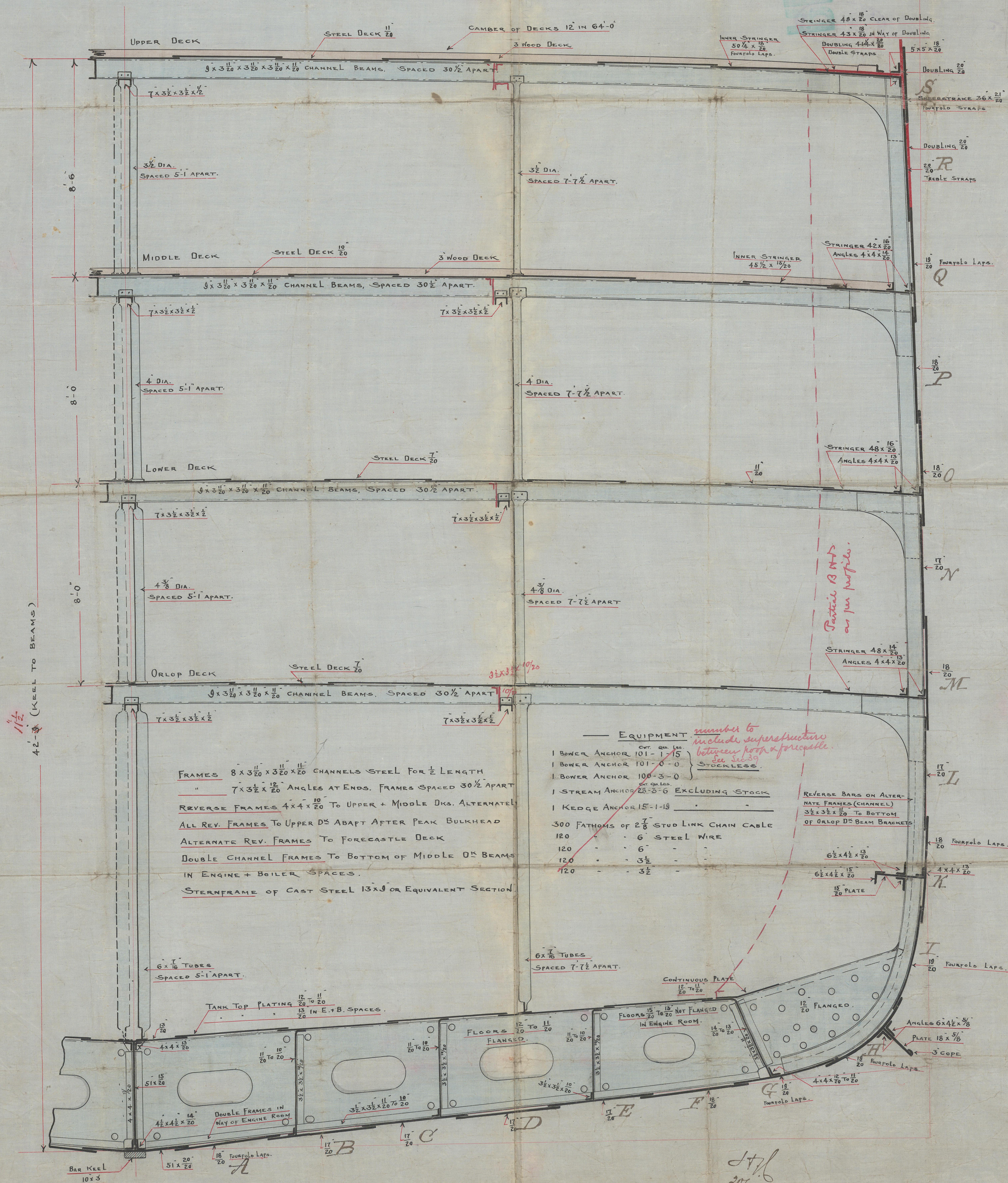
43.25 with normal bands

$32.00 + 42.75 + 68.91 + 58 - 7.00 = 137.24$  <sup>37</sup> FRAMING NUMBER

69.12

$$137.24 \times 568 = 77052.3 \text{ PLATING "}$$
$$144 \times 568 + 2659 = 84587 \text{ EQUIPMENT}$$

8.87 BREADTHS TO LENGTH  
13.28 DEPTHS " "



9.2.01



Belfast  
Scotland Works  
P.P. No 342  
Midship Section,  
"Walmer Castle"

RETAIN



© 2021

Lloyd's Register  
Foundation

W590-0104