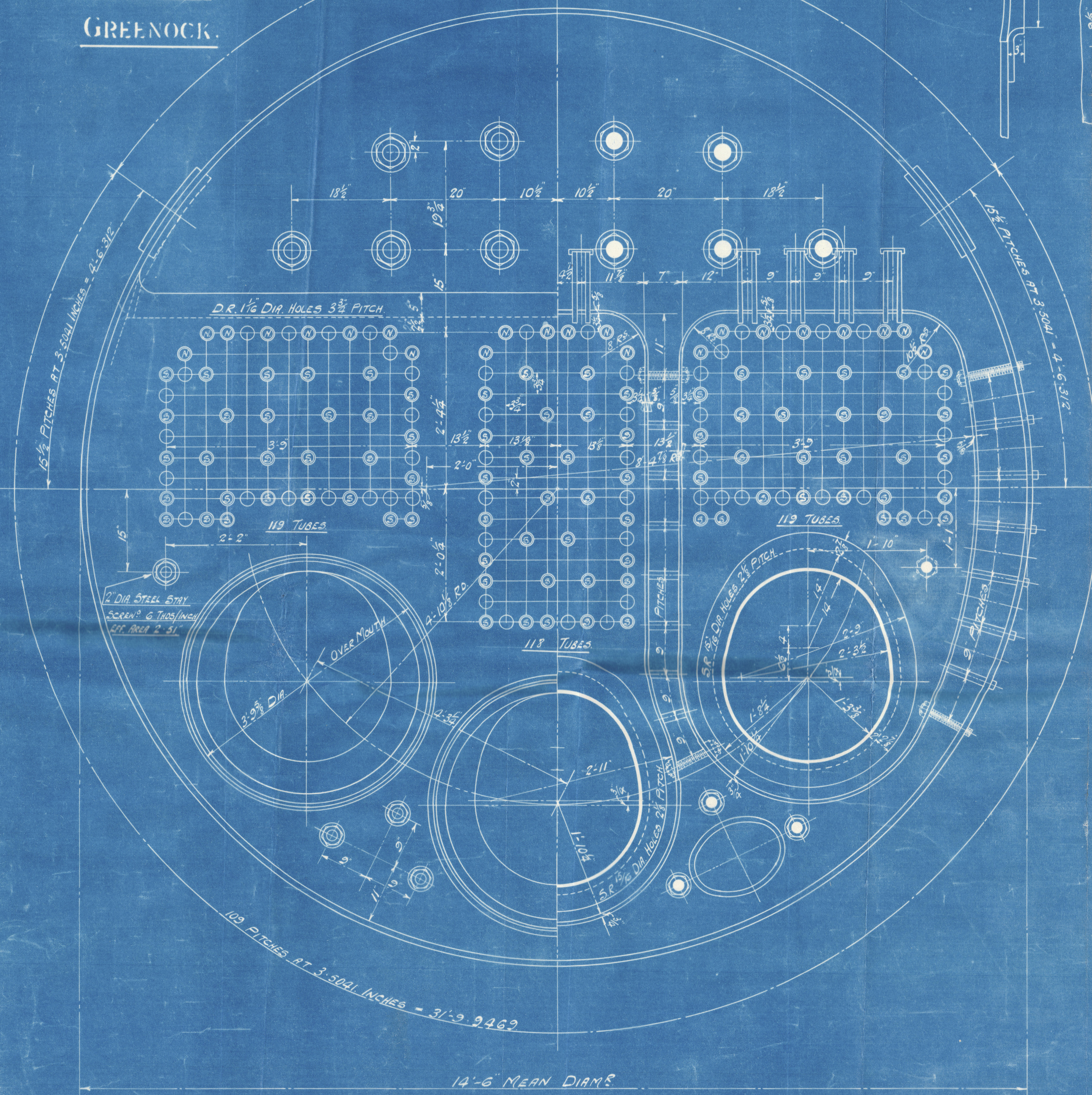
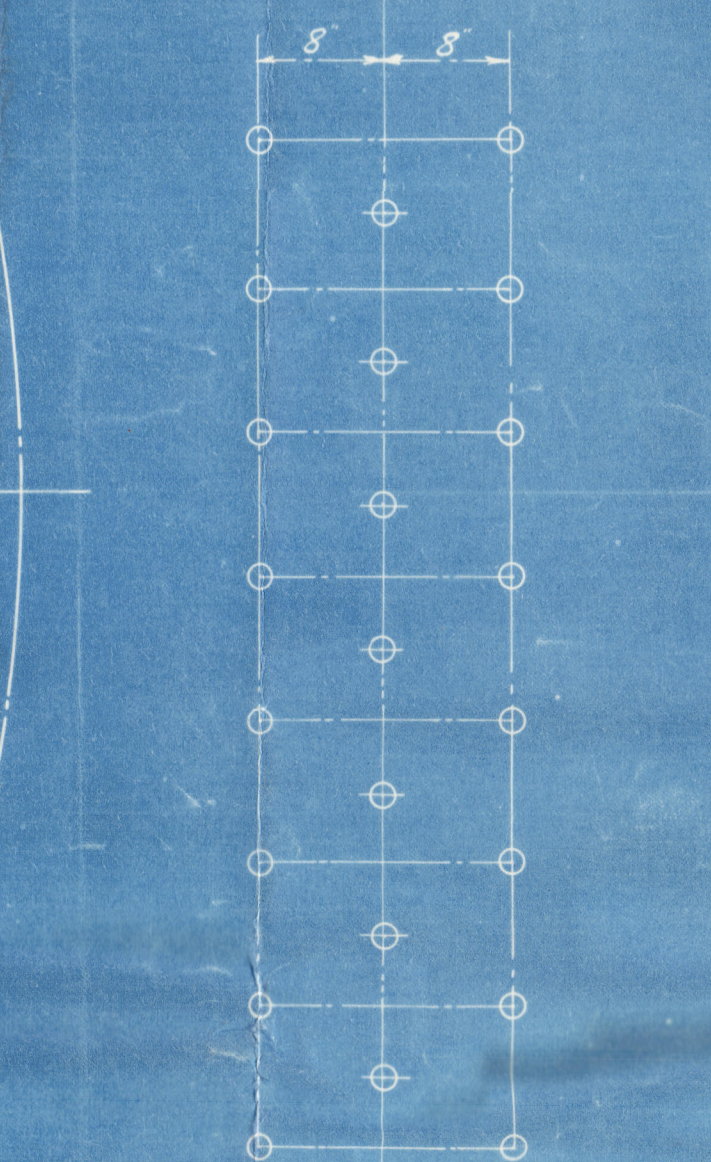


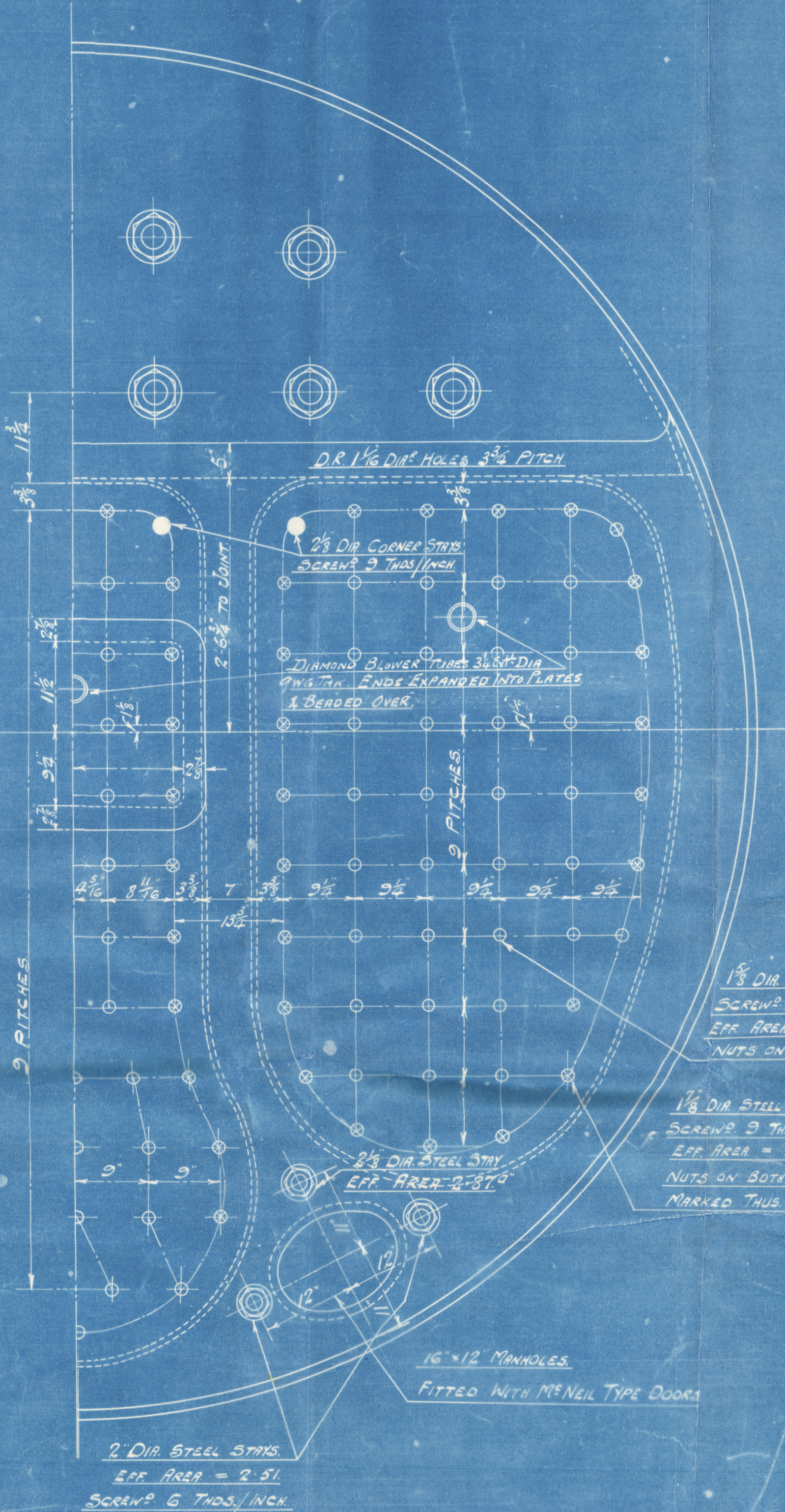
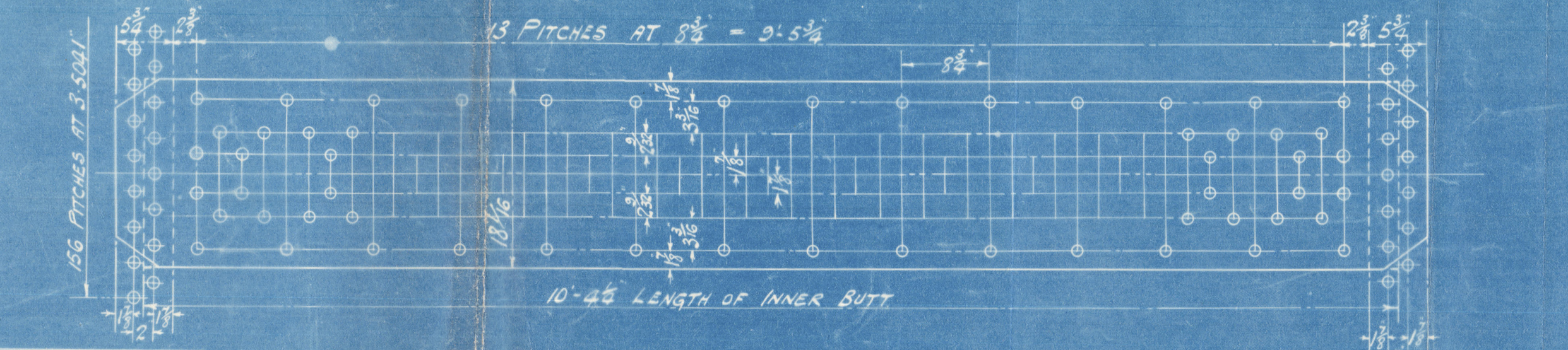
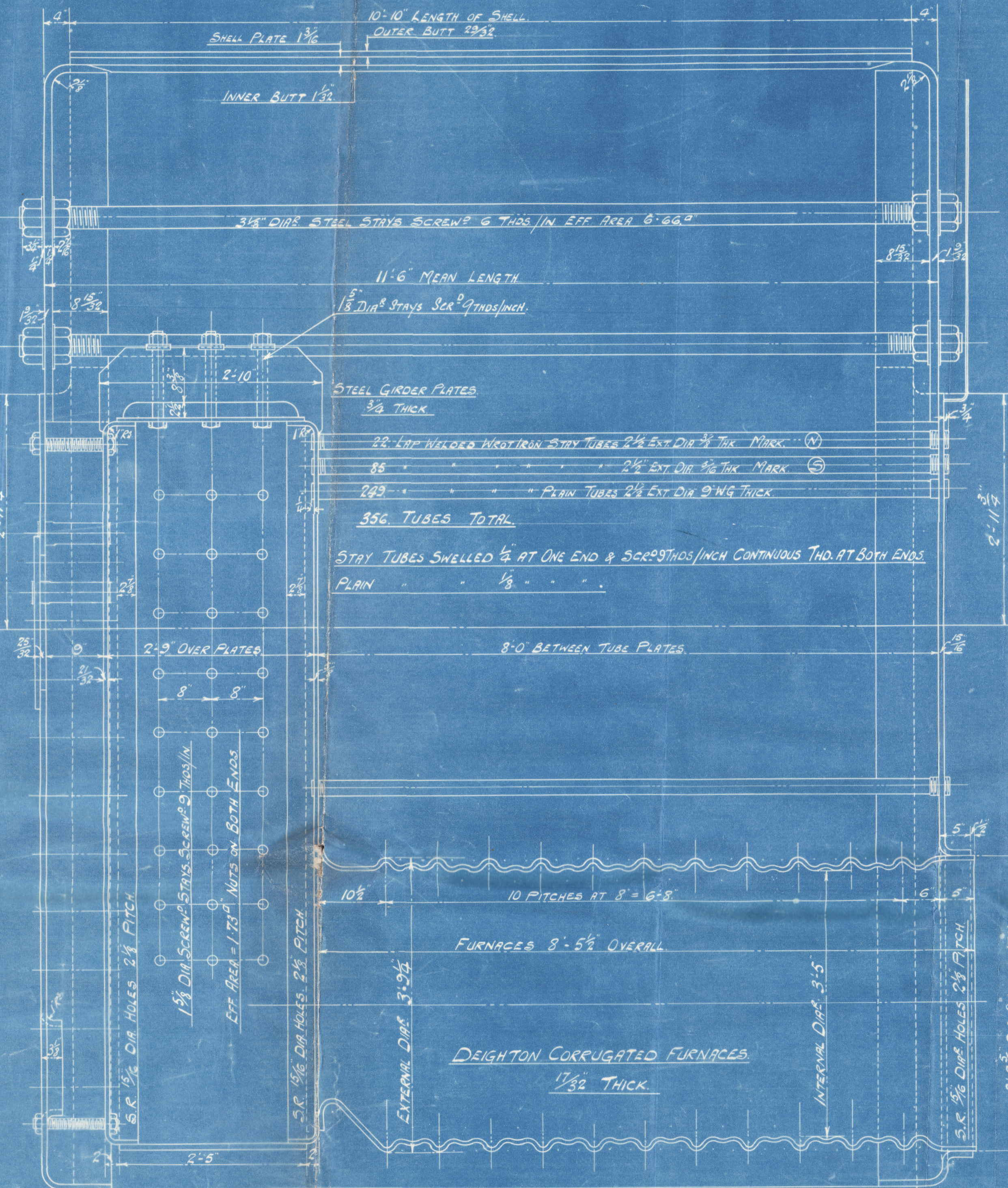
47 PITCHES AT 3.5041 INCHES = 13'-8.6227"



MANHOLE COMPENSATION RING
36 RIVETS 1 1/2\"/>



ARRANGEMENT OF STAYS BETWEEN WING C.C.
AND SHELL
1 1/2\"/>



ALL PLATES STAYS & RIVETS OF SIEMENS MARTIN MILD STEEL
TUBES LAP WELDED WROUGHT IRON.
LONG JOINT DOUBLE BUTT STRAP TREBLE RIVETED.
CIRCUMFERENTIAL JOINT DOUBLE RIVETED LAP.
WORKING PRESSURE 180 LBS / SQ. IN.
TEST PRESSURE 320 LBS / SQ. IN.
ALL RIVET HOLES TO BE DRILLED AFTER PLATES ARE BENT & FITTED
TOGETHER, THEN PLATES TAKEN APART & BURRS REMOVED.
RIVETING BY HYDRAULIC PRESSURE WHERE PRACTICABLE.

STRENGTH OF MATERIAL

	THICKNESS	TENSILE / Q
SHELL PLATES	1 1/2"	28-32
INNER BUTT STRAPS	1 1/2"	28-32
OUTER BUTT STRAPS	1 1/2"	28-32
GINDER PLATES	1 1/2"	28-32
TOP END PLATES	1 1/2"	28-32
FRONT BOTTOM END	1 1/2"	28-32
BACK	1 1/2"	28-32
TUBE PLATES	1 1/2"	28-32
FURNACES	1 1/2"	28-32
C.C. BACKS	1 1/2"	28-32
WRAPPED PLATES	1 1/2"	28-32
MANHOLE COMP. RING	1 1/2"	28-32
STEAM SPACE STAYS	1 1/2"	28-32
CORNER CHIMES	1 1/2"	28-32
RIVET SACS	1 1/2"	28-32

HEATING SURFACE	50 FEET
TUBES (326)	1868.00
FURNACES	169.80
COMBUSTION CHAMBERS	247.88
TOTAL FOR ONE BOILER	2285.68
THREE BOILERS	6856.04
AREA TWO TUBES FOR ONE BOILER	8.6
LENGTH OF FIRE GERTS	5'-6"
GORTS AREA IN ONE BOILER	50-36
THREE BOILERS	169.08
RATIO H.S. G.A. : 408:1	
SIZE OF SAFETY VALVE	3 1/4 (DOUBLE)

	DIAM. OF STAY	DIAM. OF FITTING	PITCH	PLATE	DIAM. OF STAY	DIAM. OF FITTING	W. FOR SHELL BY RING
LONGITUDINAL JOINT	1 1/2"	1 1/2"	8 1/2"	15.7	91.1	10.6	181.5 LBS / SQ. IN.
CIRCUMFERENTIAL JOINT	1 1/2"	1 1/2"	3.504	64.4	48.25		

TO BURN COAL WITH HANDSOME FORCED DRAUGHT.

SPARE GEAR 12 TUBES

APPROVED BY LLOYDS 7-5-25.

TO PASS LLOYDS TESTS & REQUIREMENTS.

BOILERS. ENGINES NO. 626

SCALE ONE INCH = ONE FOOT.

25th APRIL 1925.

14'-6" MEAN DIA. x 11'-6" MEAN LENGTH x 180 LBS / SQ. IN. W.P.

THREE OFF AS DRAWN

JOHN G. KINCAID & Co. LTD.
(DRAWING OFFICE)
8 FEB. 1925
ENGINEERS & BOILERMAKERS.
GREENOCK.

DRC. NO. 3907

© 2021
W 59-0217

Main Boiler
Thucards 626
showing Blowers
Rules

JOHN G. KINCAID & CO. LTD.
(DRAWING OFFICE)
8 FEB. 1926
ENGINEERS & BOILERMAKERS.
GREENOCK.