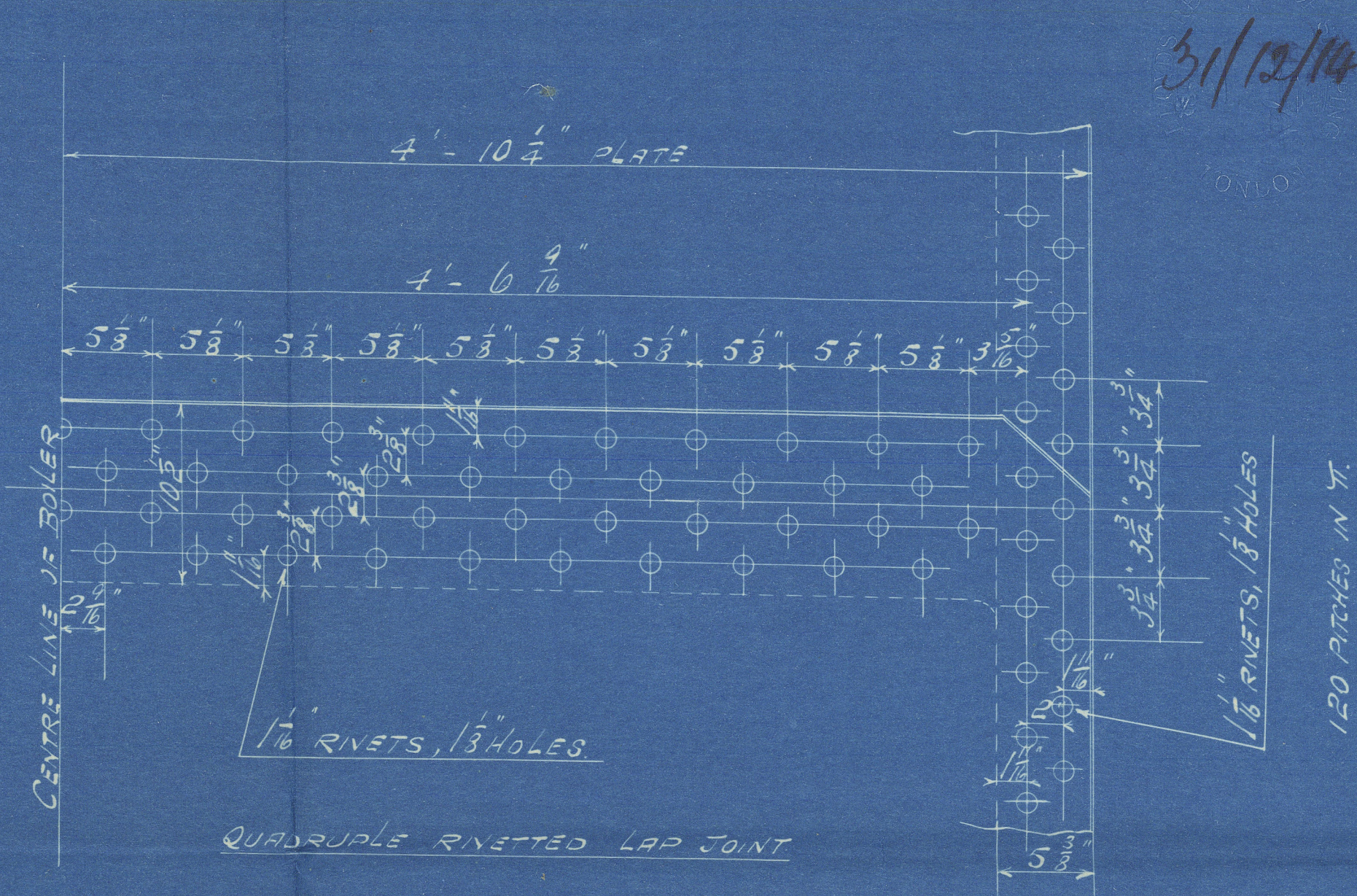
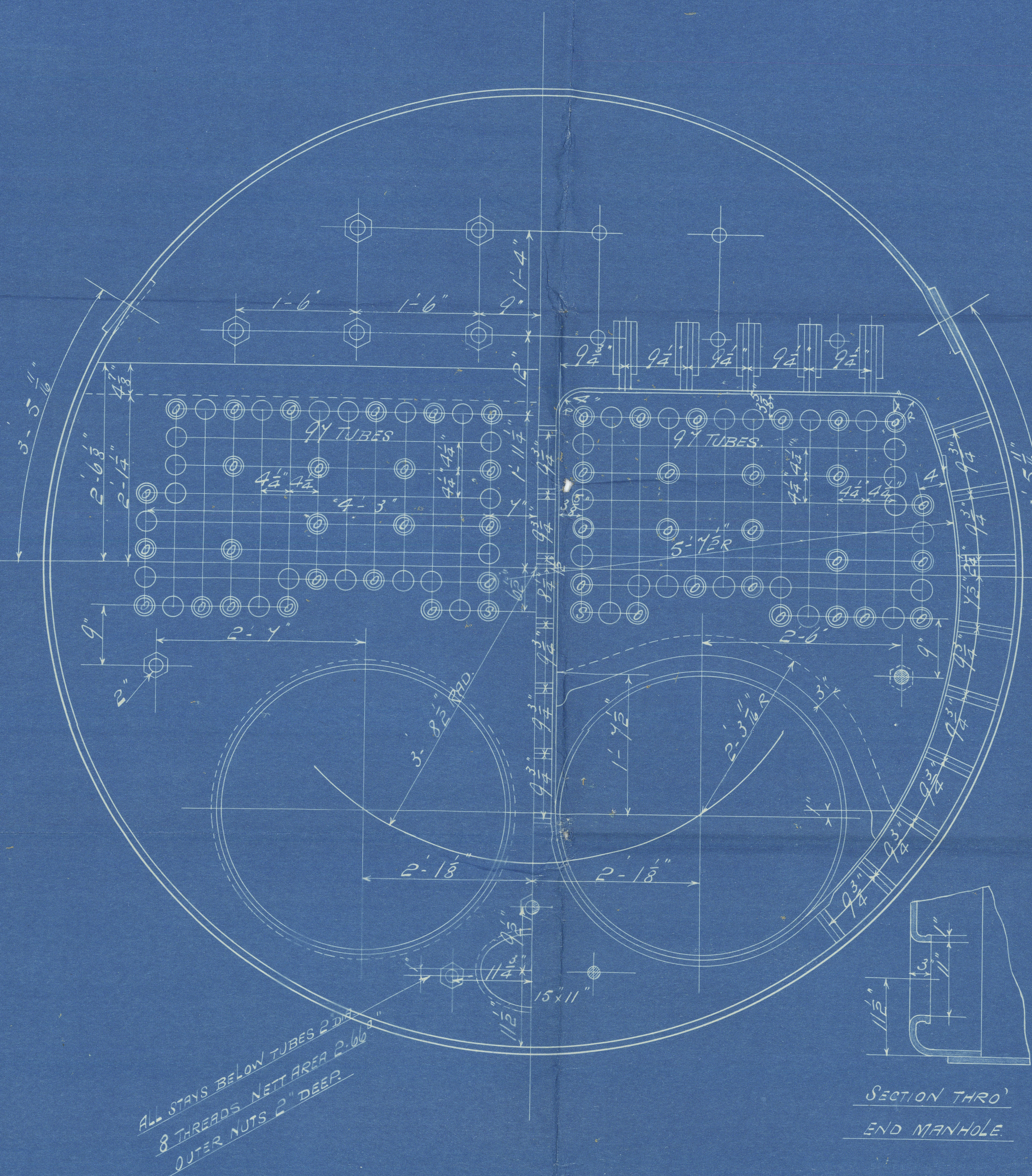


PARTICULARS	
HEATING SURFACE IN 194 TUBES.	1009#
" " 2 COMB CHAMBERS.	171 "
" " 2 FURNACES.	82 "
" " TOTAL.	1262 "
GRATE SURFACE (5-3 BARS).	37 "
AREA THRO TUBES.	7.332 "
RATIO HEATING SURFACE GRATE SURFACE.	34.1
GRATE SURFACE AREA THRO TUBES.	5.046
STEAM SPACE IN CU. FEET.	252

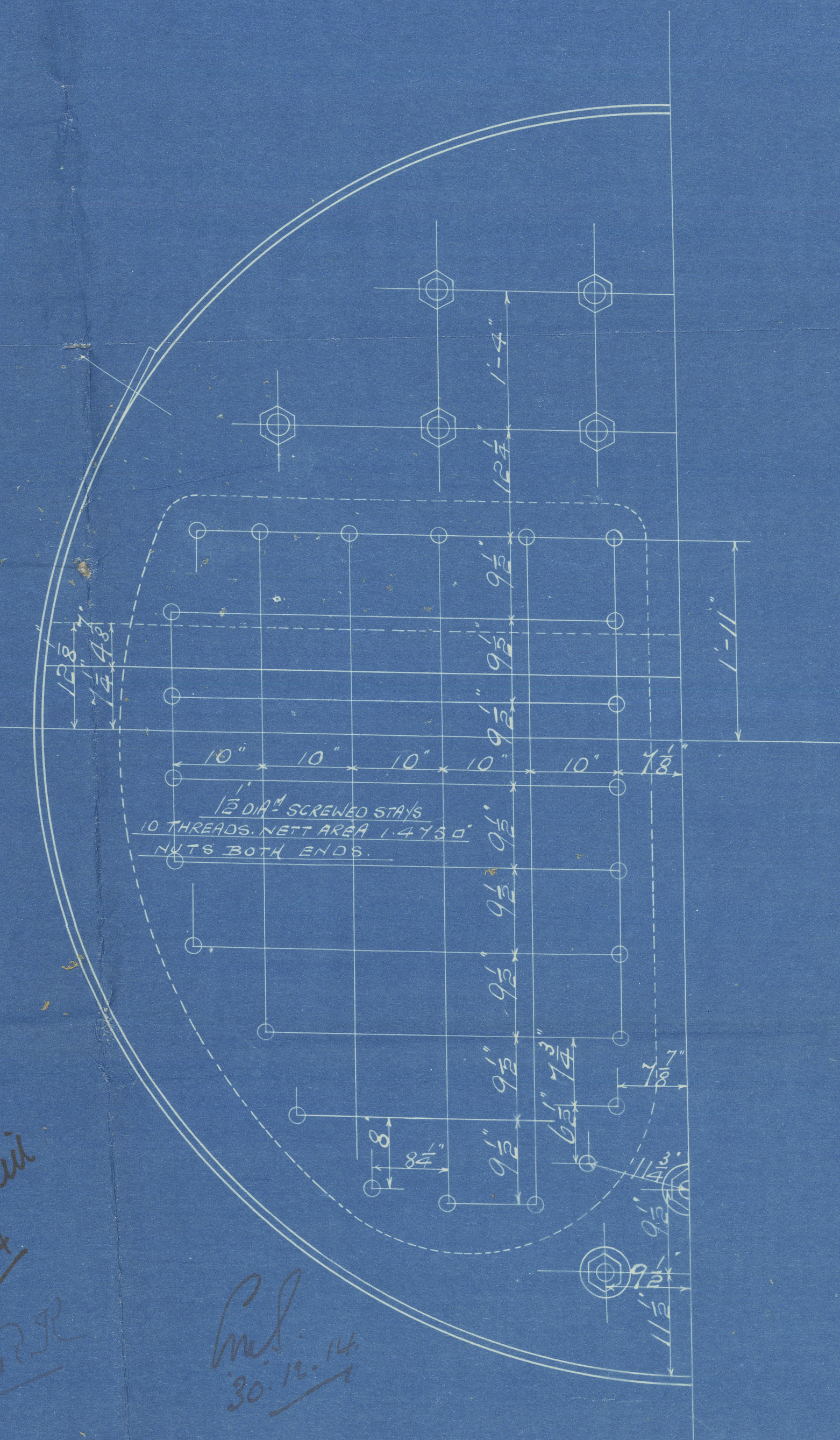
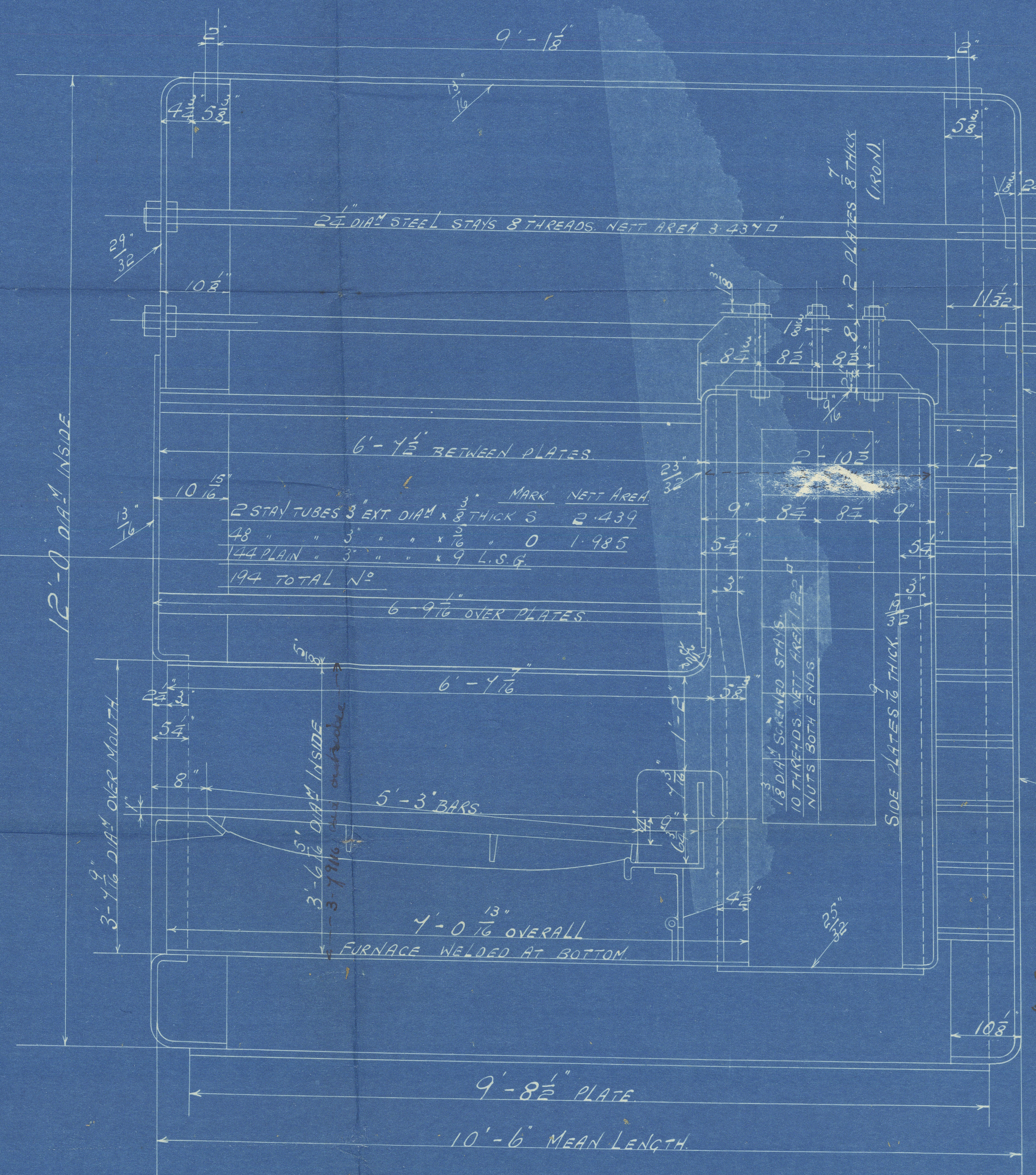


RIVETING 40.
LONGITUDINAL SEAMS.
SHELL 1/16", RIVETS 1/8", HOLES 1/8" DIA; PITCH 5 1/2"; PLATE 78.04% RIVETS 8.2%.
SHELL PLATES TO HAVE A TENSILE STRENGTH OF 28 TO 32 TONS PER SQ. IN.
CIRCUMFERENTIAL SEAMS.
RIVETS 1/16", HOLES 1/8", PITCH 5 1/2", PLATE 70%, RIVETS 55.5%.
ALL HOLES DRILLED IN PLACE. BOILER STEEL, TUBES AND GIRDERS OF IRON.
UNDER LLOYD'S SURVEY FOR A WORKING PRESSURE OF 120 LBS. PER SQ. IN.

DETAIL OF SHELL RIVETING.
SCALE 1/2" = 1 FOOT



SECTION THRO'
END MANHOLE.



MARGINAL STAYS IN COMB CHAMBER.
MARKED 1/4 DIA, 3 THREADS. NETT AREA 1.985 sq.
NUTS BOTH ENDS.

ONE DONKEY BOILER FOR N° 454.
SCALE 1" = 1 FOOT.



Donkey Boiler.

Dunsmuir & Partners No 454

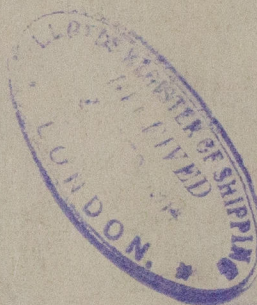
WR 120 lbs 20. 12. 14

3/8 Nairn Miller No 200

3/8 Feruleaf

GLASGOW REPORT No. 36641

RETAIN



© 2021

W587-0171

Lloyd's Register
Foundation