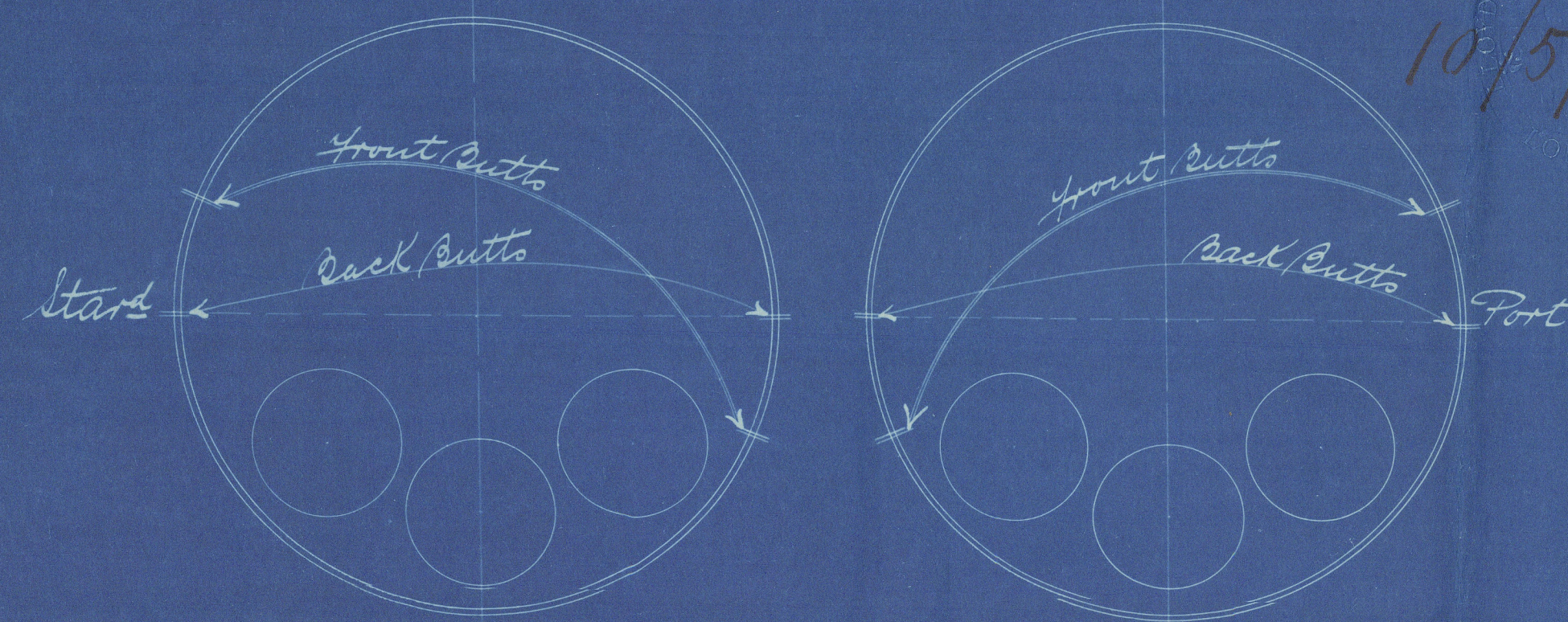


10/5/07

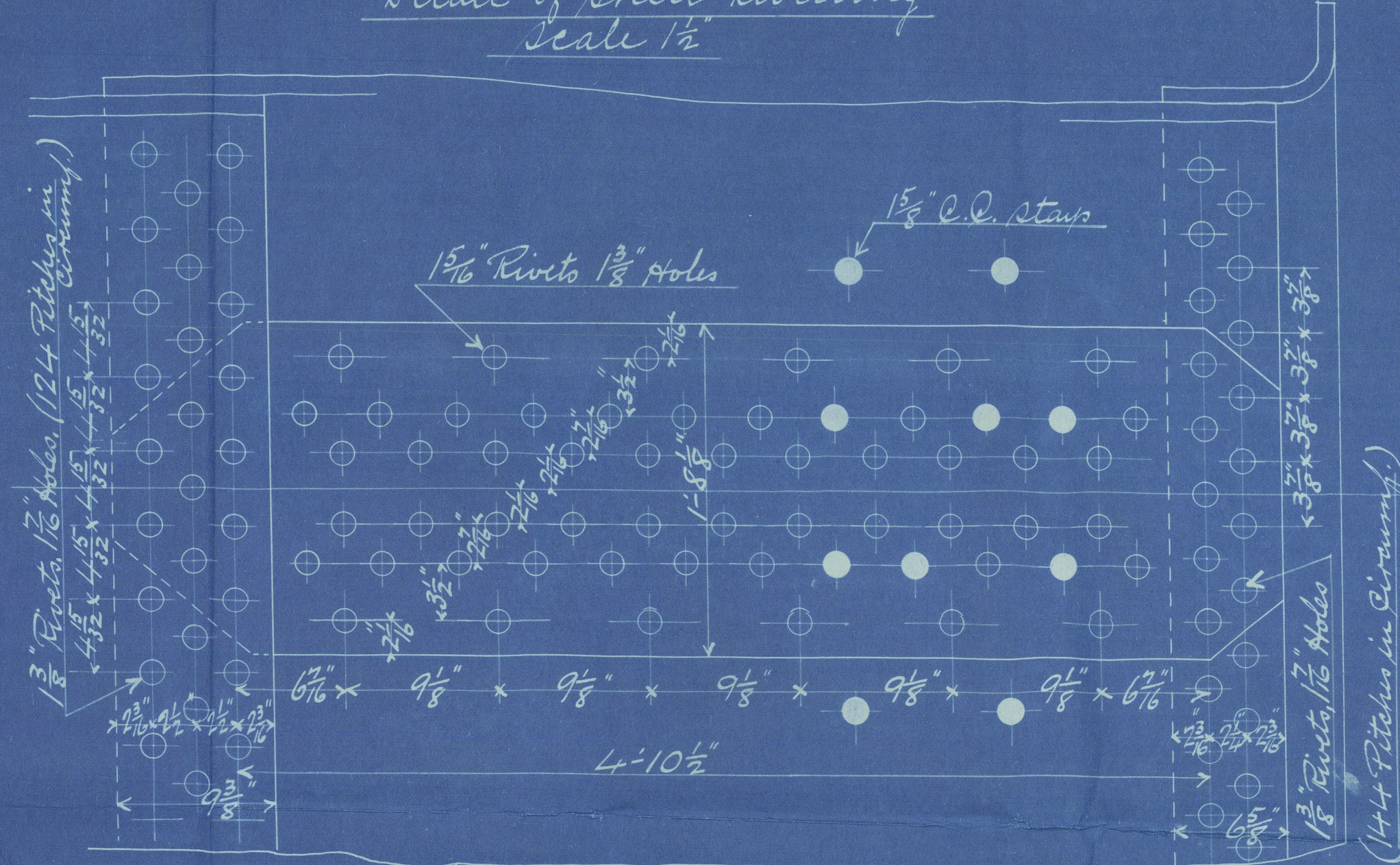


Position of Butt Straps and Manhole Doors
Looking on front of Boilers

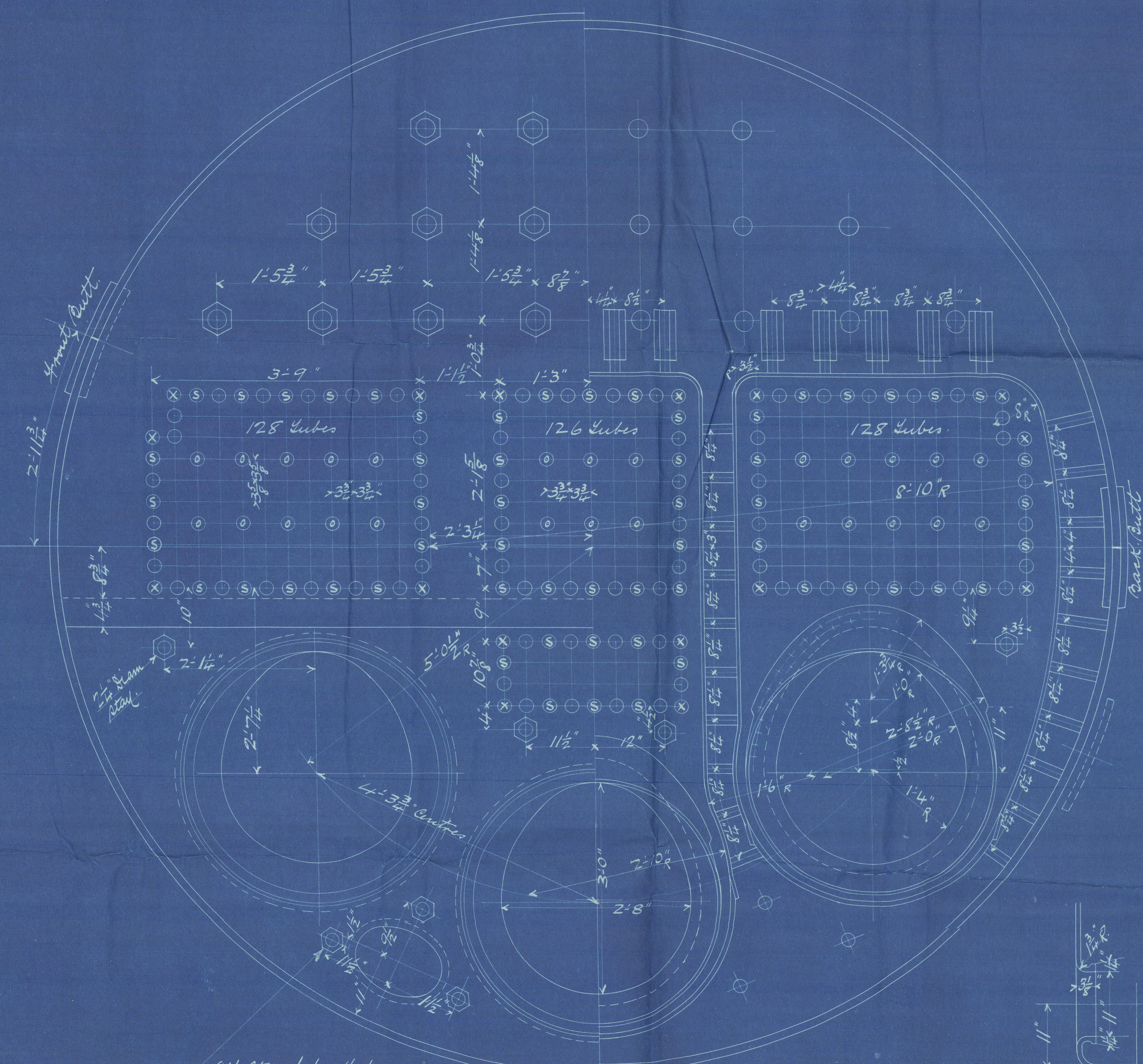
Particulars

Heating Surface in 352 Tubes	2021.4
" " 3 Furnaces	158. "
" " 3 Comb. Chs.	252. "
" " Total	2431. "
Grate Surface (4-6" Bars)	146.125
Area Thro. Tubes	9.14
Ratio $\frac{H.S.}{G.S.}$	52.7
" Area Thro. Tubes	5.04
Steam Space Cub. Feet.	496
for 2 Boilers	
Total Heating Surface	4862.4
" Grate "	92.4

Detail of Shell Rivetting
Scale 1/2"

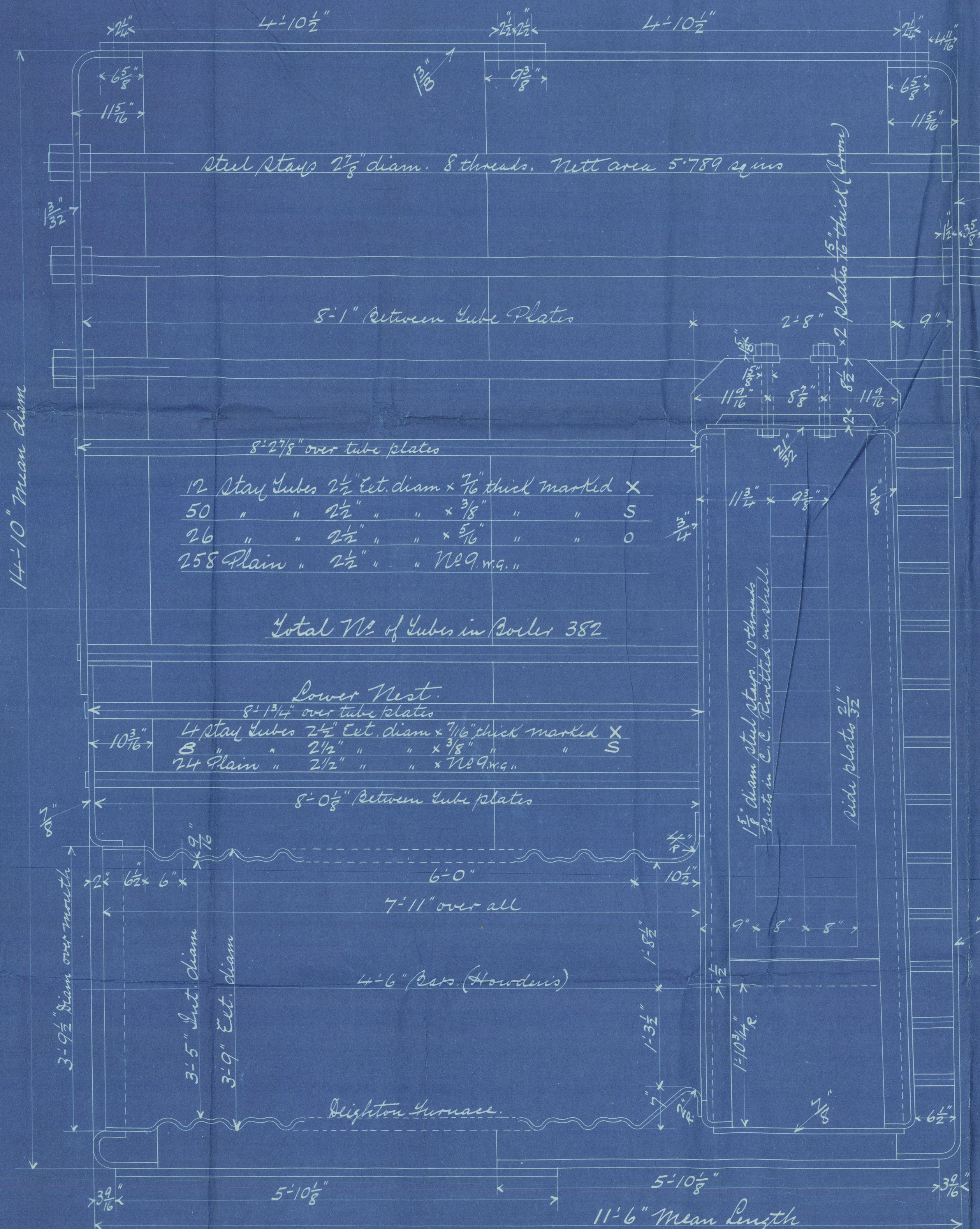


Rivetting
Longitudinal Seams
 Shell 1 1/2", Rivets 1 1/2", Holes 1 1/8", Pitch 9 1/8", Plate 85%
 Rivets (B.O.V. 54.95%); Closets 88%, Inner Butt straps 1 1/2"
 outer 1 1/8", Shell plates and butt straps to have a
 tensile strength of 28 to 32 tons per sq. inch.
Circumferential Seams
Mid Seam Rivets 1 1/2", Holes 1 1/8", Pitch 4 1/2", Plate 67%
End Seams Rivets 1 1/2", Holes 1 1/8", Pitch 3 1/2", Plate 62%, Rivets 50%
 All holes drilled in place. Boiler steel, tubes and
 girders iron. M. Nails 16" x 12" manhole door
 and saddle in shell.
 Under Board of Grate and Closets survey for a
 working pressure of 180 lbs per sq. inch.



All stays below tubes
2 1/2" diam. 8 threads, Nett. area 3.43"

Section thro' Manhole.

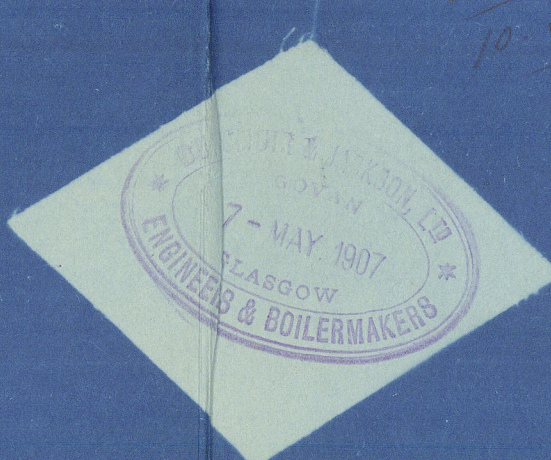


MM 8-107

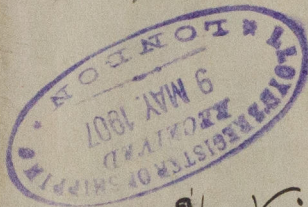
Marginal stays in Comb. Chs.
 Marked ● 2" diam 10 threads Nett. area 2.75 sq. ins
 " ○ 1 1/2" " 8 " " 1.98 " "
 All marginal stays to have nuts at both ends.

2 MAIN BOILERS FOR No 324
SCALE 1" = ONE FOOT

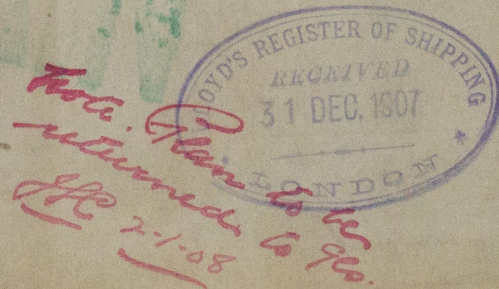
May 7/07



S/s "Kintail"
Dunsmuir, Jackson
Maui, Mori N^o. 32416
Dr P. 1801h
Glasgow Report No 26115



S/s Killin N^o 326
Glasgow Rpt. No. 26577



© 2020

Lloyd's Register
Foundation
W585-0158