

# MIDSHIP SECTION

S.S. "AKABO"

## DIMENSIONS

LENGTH OVERALL 352 FT. 0 IN.  
LENGTH B.P. 352 FT. 0 IN.  
BREADTH EXTREME 44 FT. 0 IN.  
DEPTH OF HOLD 26 FT. 0 IN.  
DEPTH MOULDED 26 FT. 0 IN.  
CLASS 100 A1 LLOYD'S THREE DECK RULE

SCALE 1/2" = 1 FOOT

LLOYD'S NUMERALS  
1/2 BREADTH 21' 90  
DEPTH 26' 91  
1/2 GIRTH 43' 12  
93 93  
Y 00  
FRAME N° 86 93  
PLATING N° 30395 9438

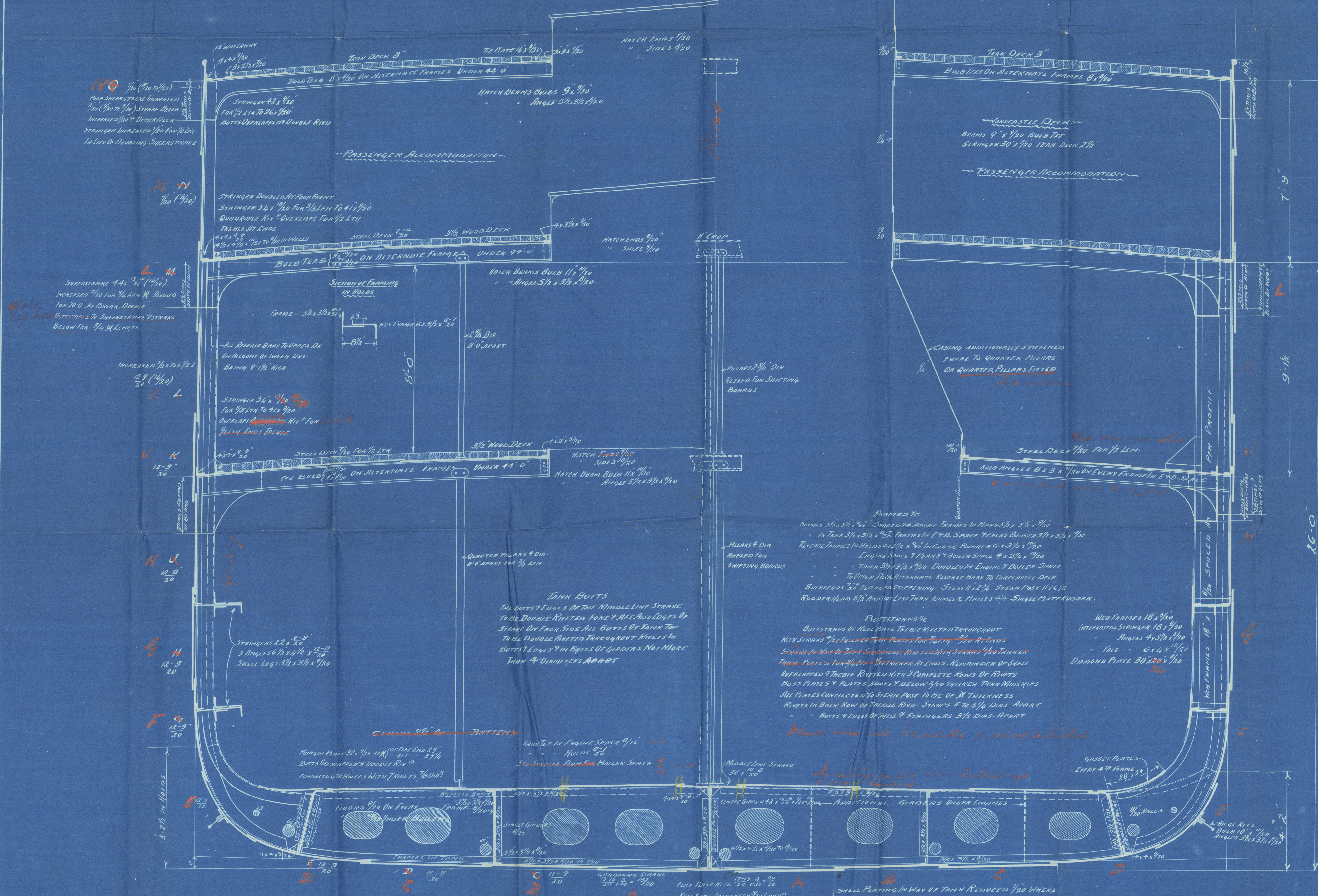
DEPTH TO LENGTH 12' 99 U.D.  
19' 61 M.D.

EQUIPMENT N° 30395 9438

BREADTHS TO LENGTH Y'98

## EQUIPMENT

2 BOWKER ANCHORS STOCKLESS 50 CWT.  
1 " " " 42 1/2 "  
1 STREAM " 6" STOCK 12 "  
1 HEDGE " " 6 "  
270 FATHOMS 2 1/4" STUD CHAIN CABLE  
90 " 1 3/4" STREAM CHAIN  
120 " 4 1/2" WIRE TOWLINE  
30 " 3 1/4" WIRE  
90 " 4 "  
90 " 3 1/2" HAWSER MANILLA  
90 " 1 1/2 "  
6 of 90 " EACH 6" THREE STRAND



N° 482



SIR RAYLTON DIXON & COMPANY, L<sup>TS</sup>,  
SHIPBUILDERS & ENGINEERS,  
CLEVELAND DOCK YARDS, 1920  
MIDDLESBROUGH-ON-TEES.  
N° 10854. APRIL 11, 1902  
Lloyd's Register  
58516399



Sir R. Dixon V6°

Nº 482

Midship Section

"Akabo"

Shab. report Nº 3328

Visiter vessel

S. Nigeria

Shab. 3187

RETAIN



© 2020

Lloyd's Register  
Foundation

W585-0039