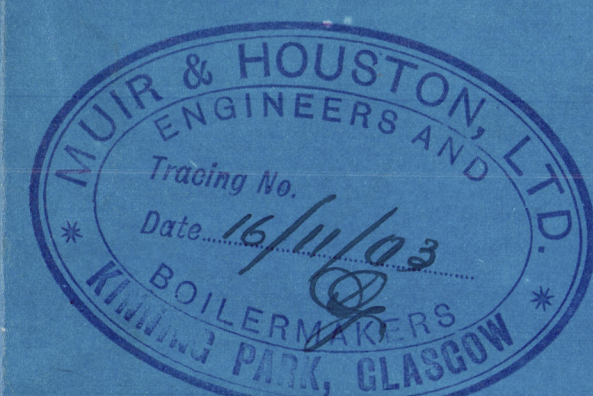
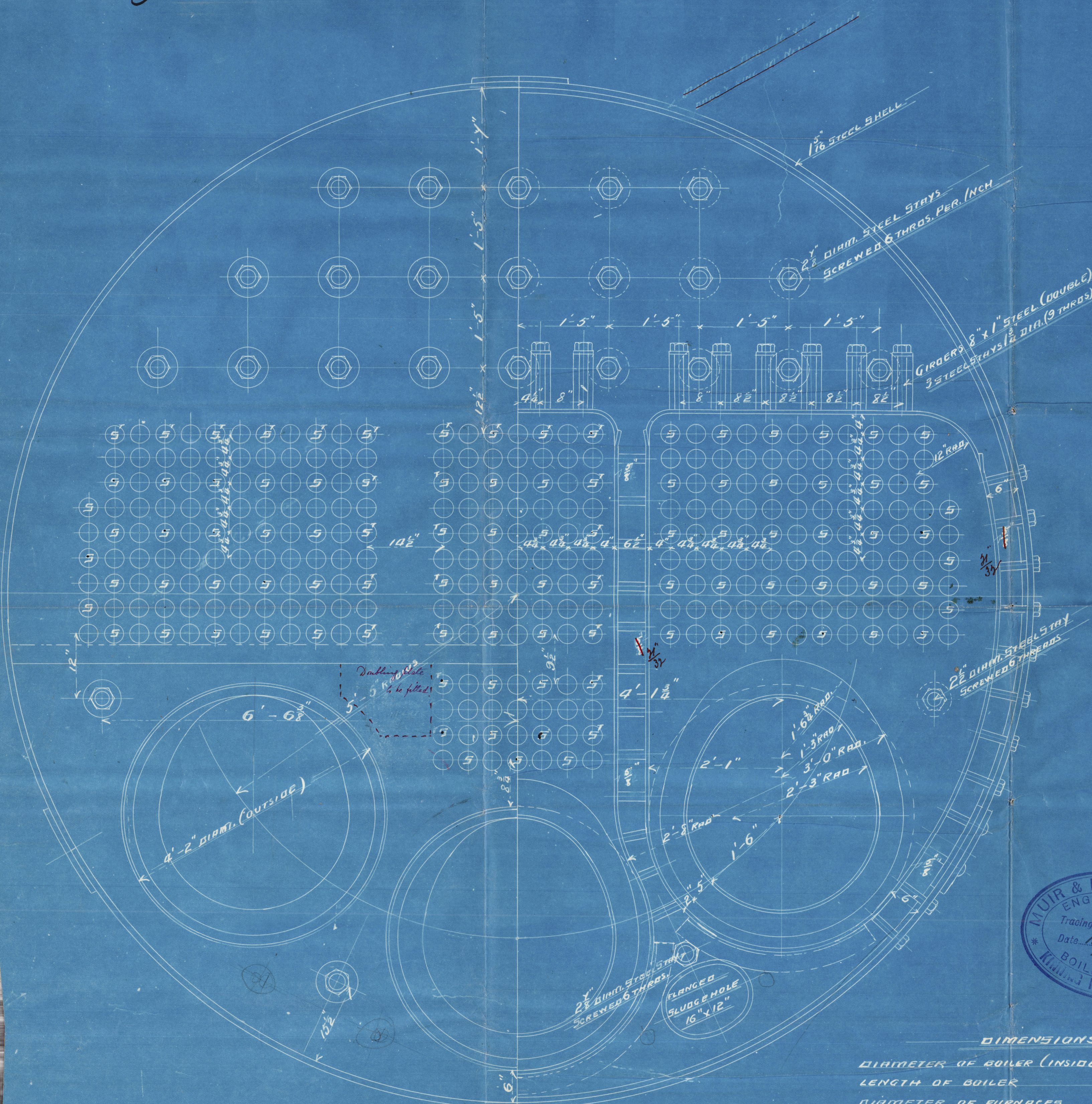


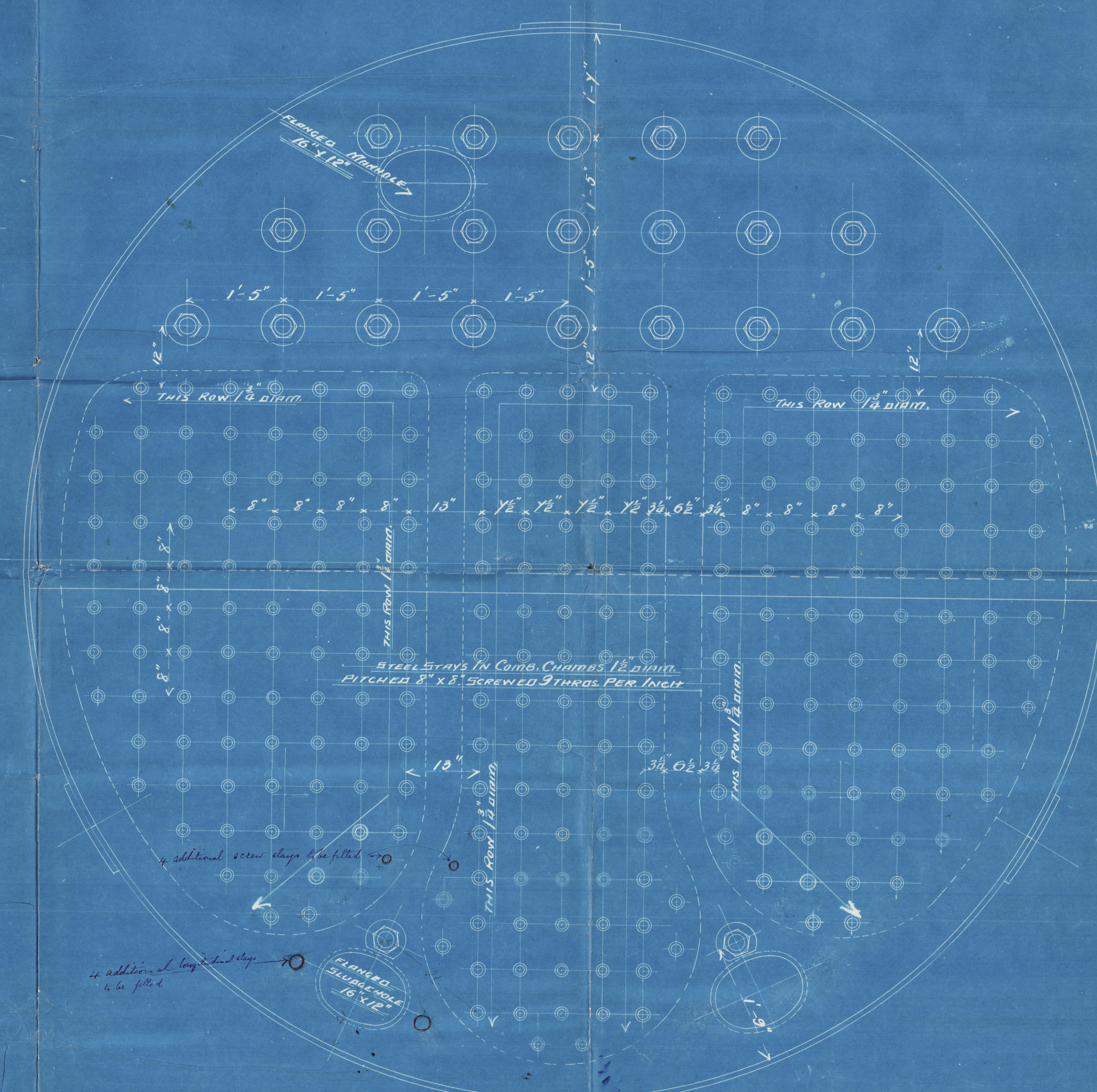
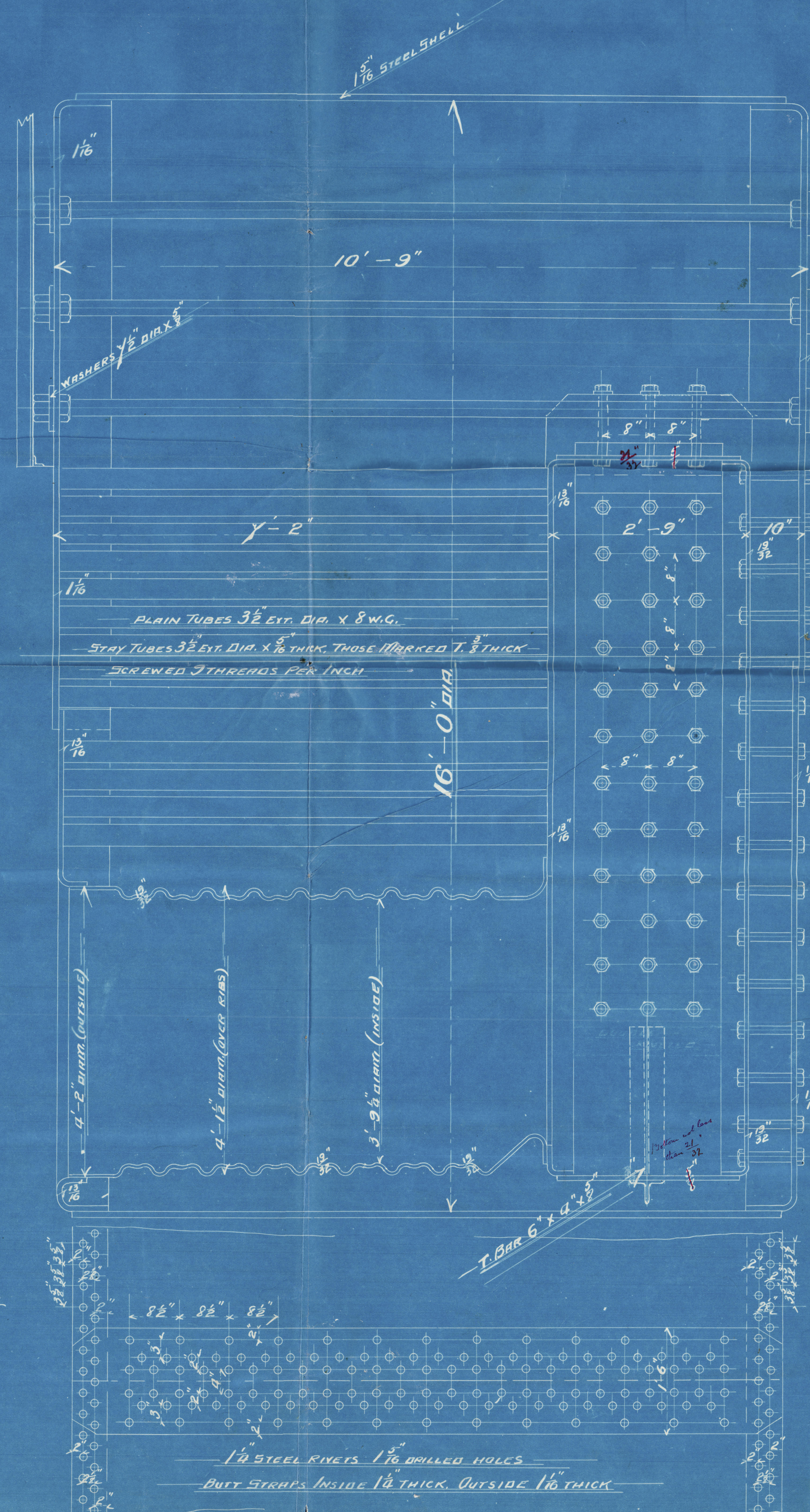
MARINE BOILER N^o 572

SCALE 1 INCH = 1 FOOT

TENSILE STRENGTH OF SHELL PLATES & BUTT STRAPS TO BE FROM 28 TO 32 TONS



DIMENSIONS	
DIAMETER OF BOILER (INSIDE)	= 16'-0"
LENGTH OF BOILER	= 10'-9"
DIAMETER OF FURNACES	= 4'-1 1/2"
NUMBER OF PLAIN TUBES	= 204
NUMBER OF STAY TUBES	= 87
TOTAL NUMBER OF TUBES	= 301
TOTAL HEATING SURFACE	= 2350 sq ft
TOTAL FIREGRATE AREA (6'-0" DIA.)	= 68 sq ft
WORKING PRESSURE	= 180 LBS. PER. Q. INCH



20.11.03

Muir & Houston
Main Boiler No 542

180 lbs w.P.

sp "Main"
Glasgow No 21822



RETAIN

RETAIN

W583-0132



© 2021

Lloyd's Register
Foundation