

— MIDSHIP SECTION —

L. S. Crite

TO CLASS 100 A.I. AT LLOYDS —

THREE DECK RULE

SCALE $\frac{1}{2}'' = 1$ FOOT.

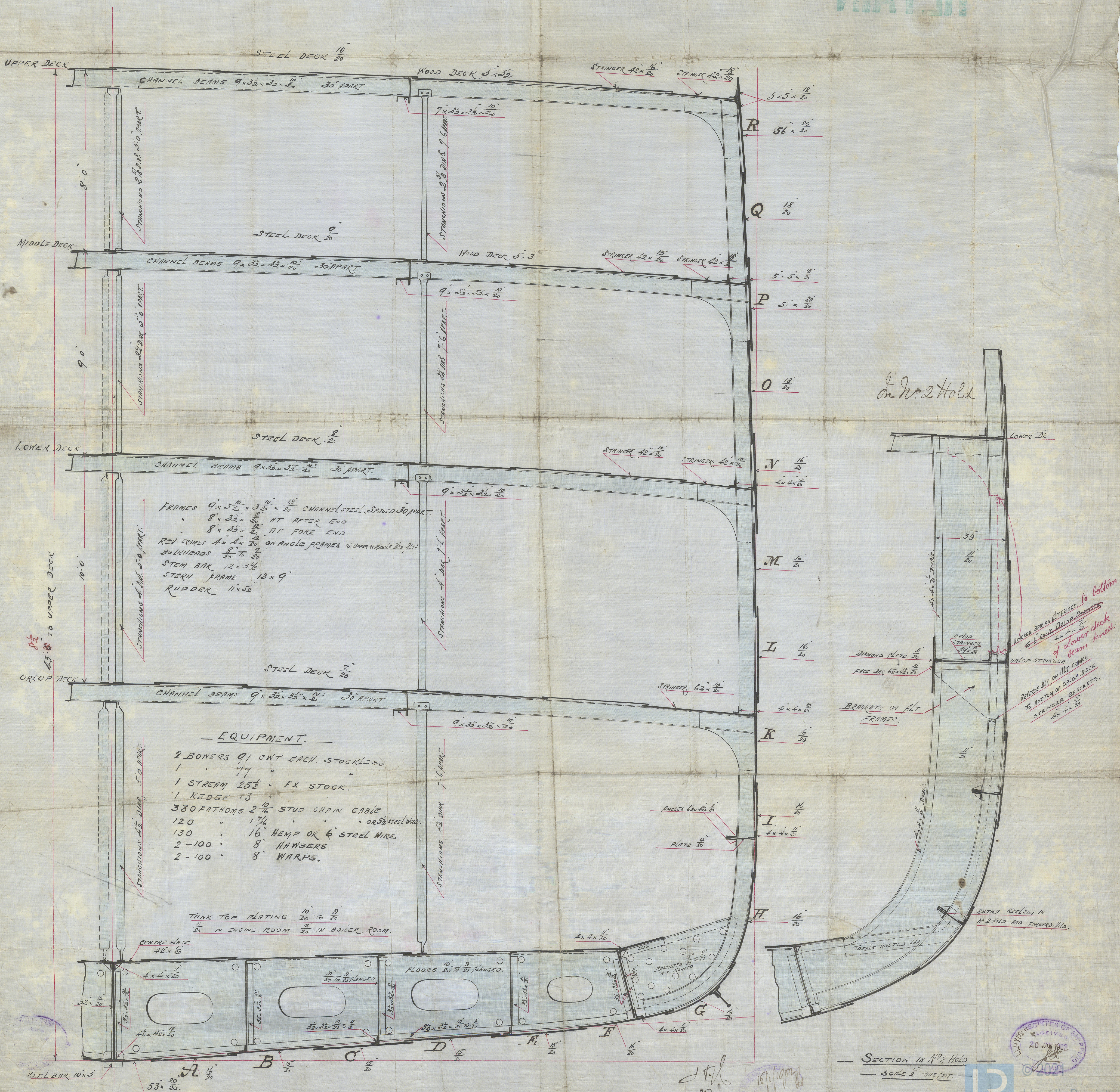
NUMERALS.

$$29.0 + 43.5 + 67.20 + 6.3 - 7.00 = 133.32 \text{ FRAMING NO.}$$

133.52 x 483.00 = 64,424 P/LATING No

$$140.58 \times 483 + 5035 = 72,838 \text{ EQUIPMENT No}$$

ROUND OF BEAM $12\frac{1}{2}$ " IN 58'-0"



In No. 2 Hold

SECTION IN N^o 2 HOLD
SCALE 2" = ONE FOOT.

— SCALE $\frac{1}{2}$ " = ONE FOOT.




 Lloyd's Register
 Foundation

Belfast
Harland & Wolff's
J.C.C. No 351

Midship Section
as a 3 DK vessel

"Orta"

Pl 5514 !

"Orta"

W 581-0066

RETAIN



© 2021

Lloyd's Register
Foundation