

SURFACES.	ONE BOILER	3 BOILERS
TUBES.	2065	6195
FIREBOX TOP & SIDES.	158	474
" " BACK.	82	246
" " TUBEPLATE.	55	165
FURNACES.	161	483
TOTAL HEATING SURFACE.	2521	7563
GRATE AREA (5'-6" BARS)	63.3	190
TUBE AREA.	11.41	34.23
WATER " "	160	480
STEAM SPACE.	514	1542
GRATE AREA HEATING SURFACE.	1:40	
" " : TUBE.	1:32.6	
" " : " AREA.	5.54:1	
" " : WATER.	1:2.52	
" " : STEAM SPACE.	1:8.1	
% BOILER ABOVE FIREBOX.	32.2	
WEIGHT OF WATER.	262 TONS	792 TONS

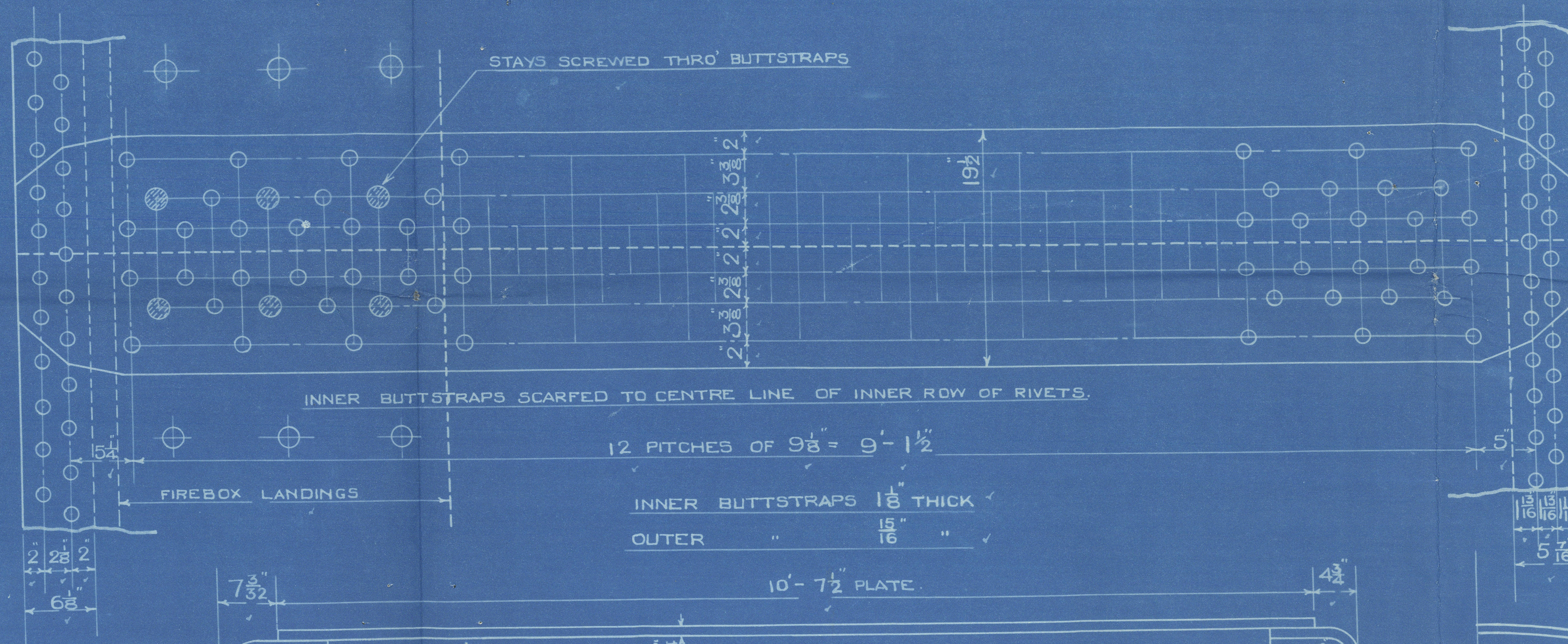
RIVETING.	LONG.	BACK END CIRC.	FRONT END CIRC.
RIVET HOLE DIA.	1 1/8	1 1/8	1 1/8
PITCH.	9.125	3.54	3.19
% PLATE.	85.6	63	63.3
% RIVET.	88.3	51.9	46.5

LIMITS OF TENSILE STRENGTH & MATERIAL.	
SHELL, BUTTSTRAPS & GIRDERS	28 TO 32 TONS
OTHER PLATES	26 " 30 "
FURNACES	26 " 30 "
MAIN STAYS	28 " 32 "
SCREWED STAYS	26 " 30 "
RIVET BARS	26 " 30 "

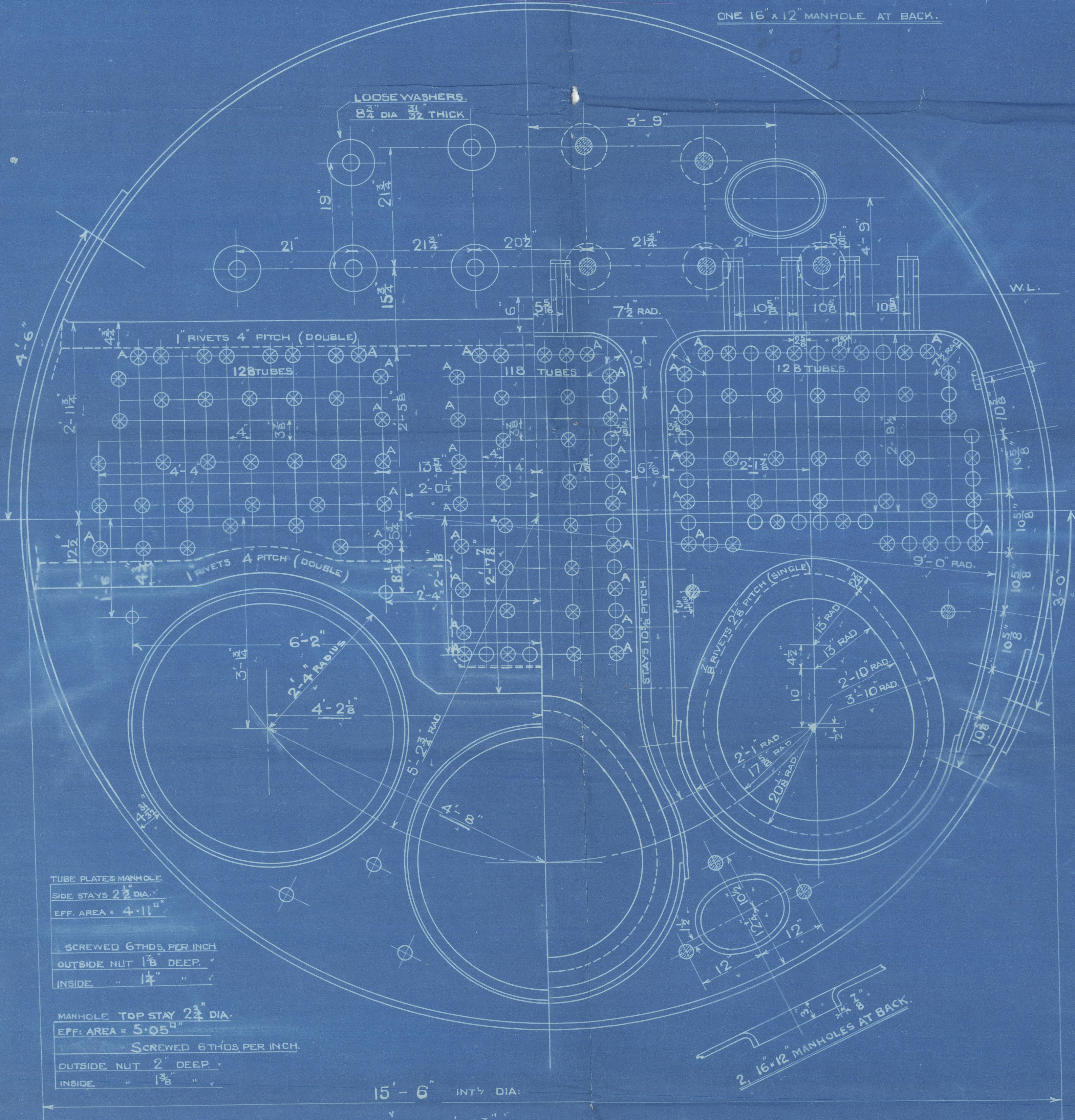
ALL RIVET HOLES DRILLED IN PLACE.

ONE 16" x 12" MANHOLE AT BACK.

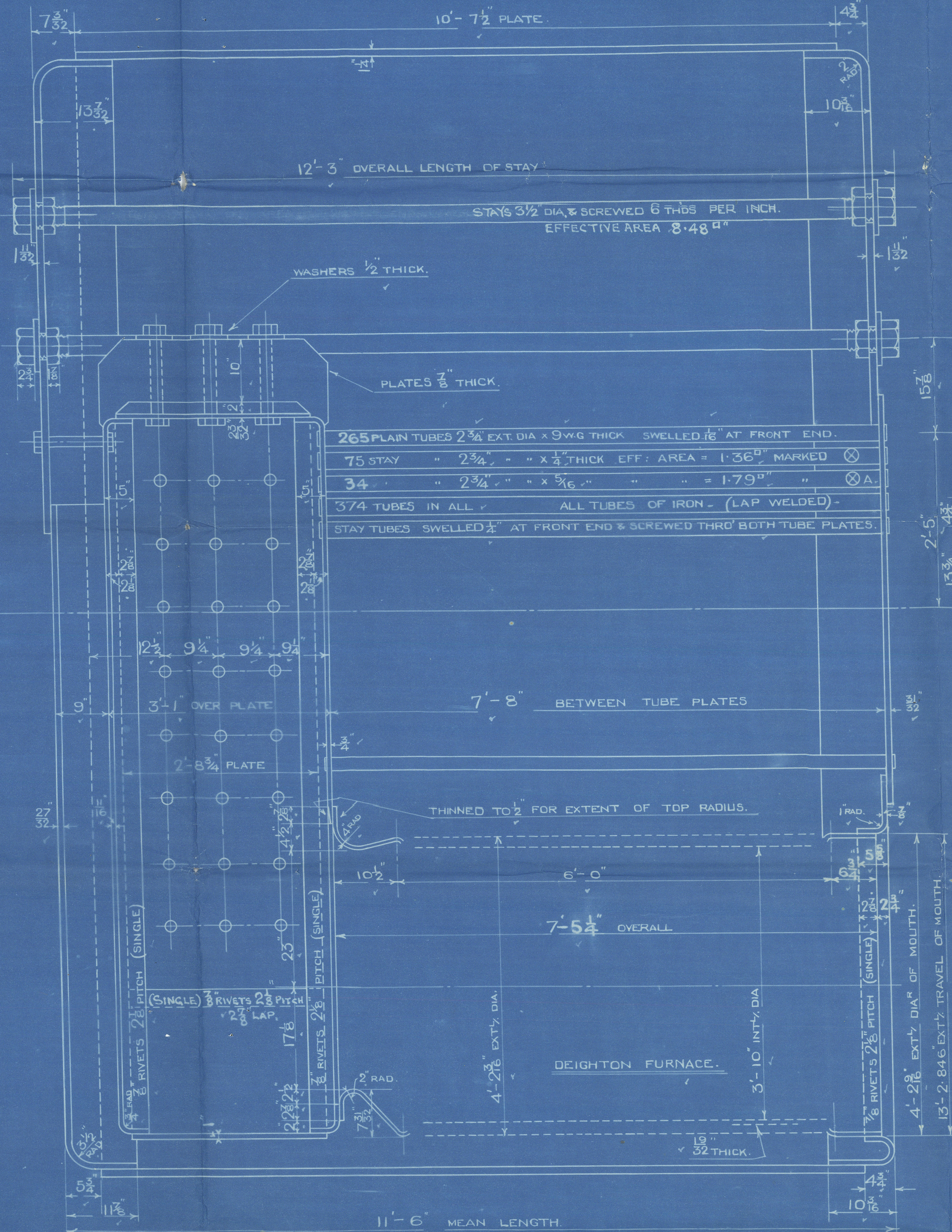
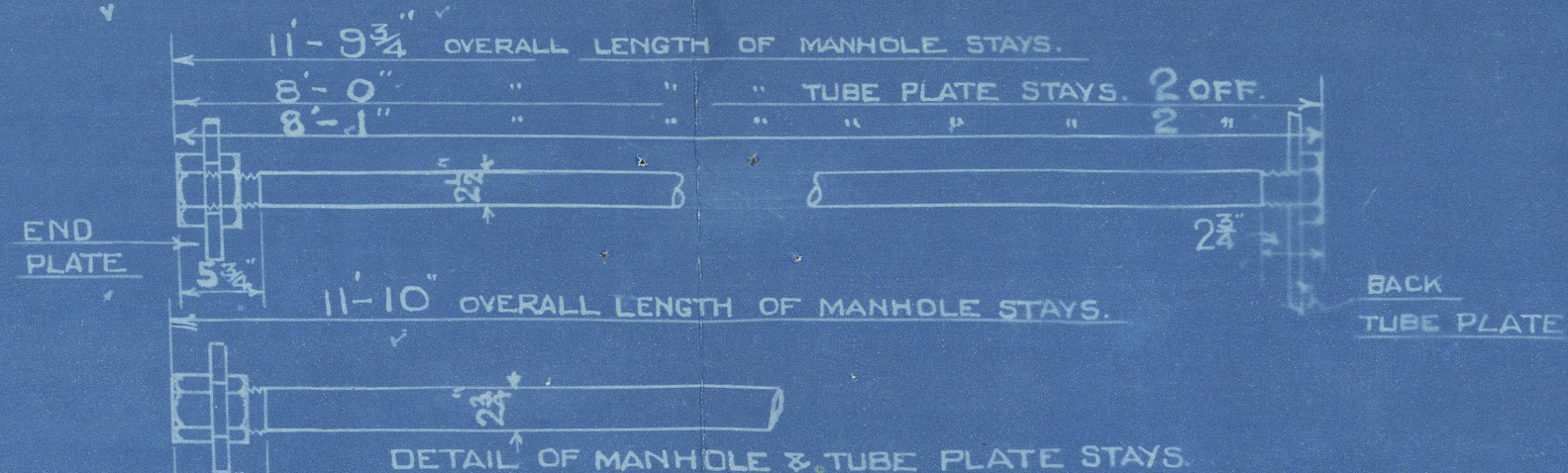
BACK END CIRC.
166 PITCHES OF 3.54



FRONT END CIRC.
182 PITCHES OF 3.23



TUBE PLATE MANHOLE
SIDE STAYS 2 1/2" DIA.
EFF. AREA = 4.11
SCREWED 6 THDS. PER INCH
OUTSIDE NUT 1 1/8" DEEP
INSIDE " 1 1/8"
MANHOLE TOP STAY 2 1/2" DIA.
EFF. AREA = 5.05
SCREWED 6 THDS. PER INCH
OUTSIDE NUT 2" DEEP
INSIDE " 1 1/8"



265 PLAIN TUBES 2 3/4" EXT. DIA. x 9 W.G. THICK SWELLED 1/8" AT FRONT END.
75 STAY " 2 3/4" " " x 3/4" THICK EFF. AREA = 1.36
34 " 2 3/4" " " x 3/4" " " " = 1.79
3/4 TUBES IN ALL ALL TUBES OF IRON (LAP WELDED).
STAY TUBES SWELLED 1/8" AT FRONT END & SCREWED THRO' BOTH TUBE PLATES.

POSITION	MARK	DIA.	EFF. AREA.
BACK, TOP & SIDES.	○	1 1/8	2.395
" " WIDE SPACE.	○	2	2.75
" " TOP ROW.	○	2 1/4	3.43

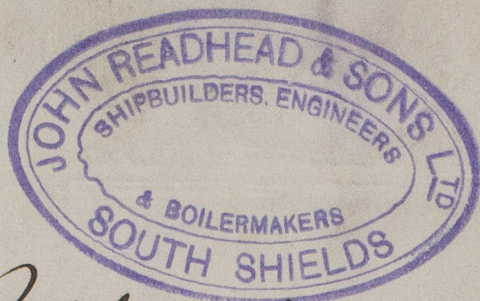
ALL FIREBOX STAYS SCREWED THRO' BOTH PLATES & NUT FITTED AT EACH END EXCEPT STAYS FROM WING FIREBOX TO SHELL WHICH PROJECT 1/8" & ARE CAULKED. ALL 1 1/8" NUTS 1 1/2" DEEP EXCEPT ON GIRDER TOPS WHERE THE OUTSIDE NUTS ARE 1 1/8" DEEP ALL 2" & 2 1/4" NUTS 1 1/2" DEEP.

MAIN BOILERS. 3 OFF.
ENGINE NOS 2158 - 2159 -

WORKING PRESSURE = 180 LBS PER SQ. INCH.
TO PASS LLOYD'S SURVEY
SCALES 1" & 1 1/2" = ONE FOOT.



DRAWING NO 3001



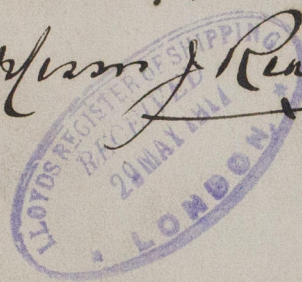
Boilers Numbered

2158 & 2159

HP 180 lb per sq in

Intended for Standard
vessels. No

by Messrs J Readhead & Sons Ltd



Haliartus
W J H B

S.S. DENNISTOUN.

NEWCASTLE ON TYNE.

Report No. 71953.

REMAIN



© 2020

Lloyd's Register
Foundation