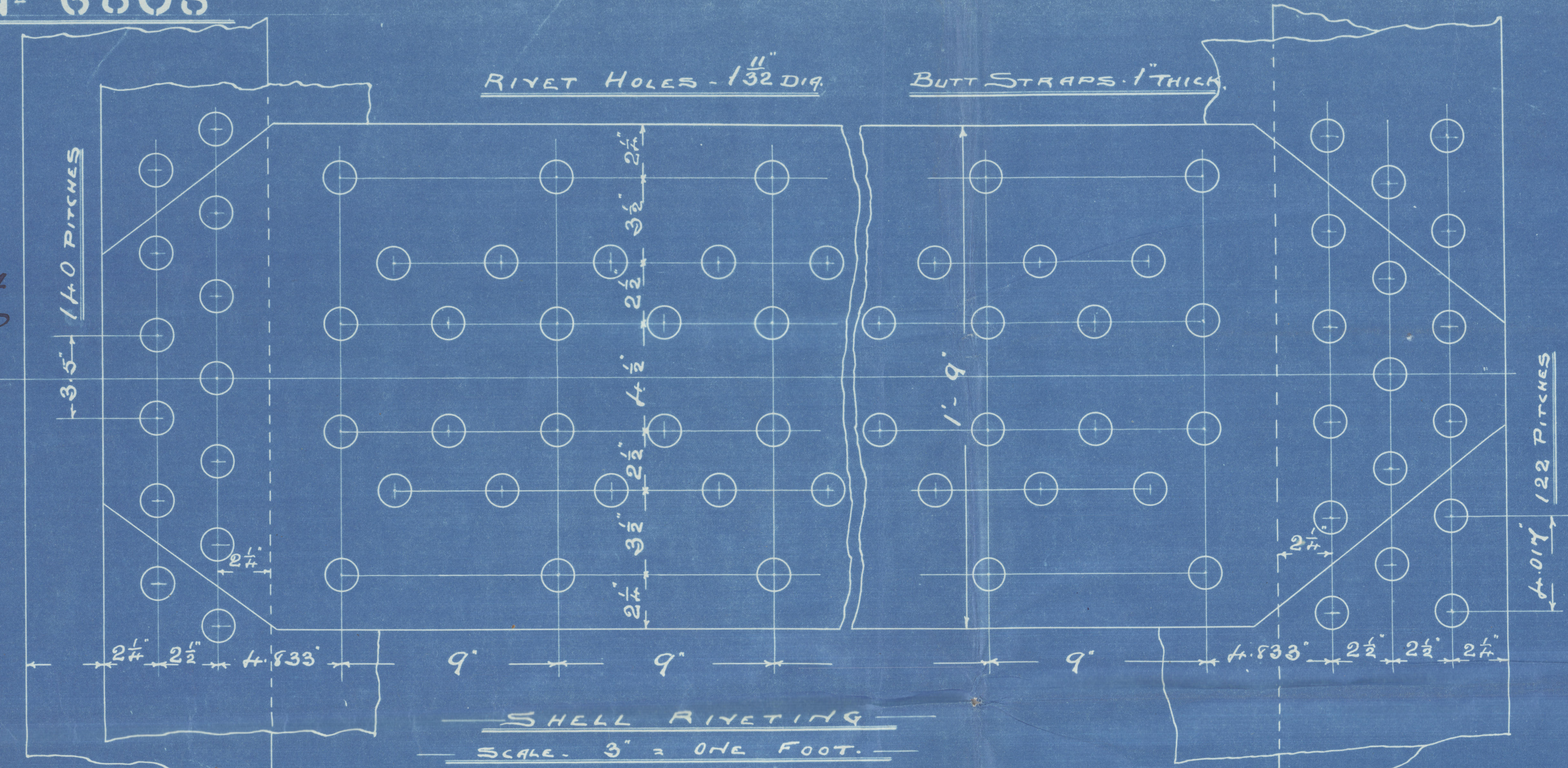
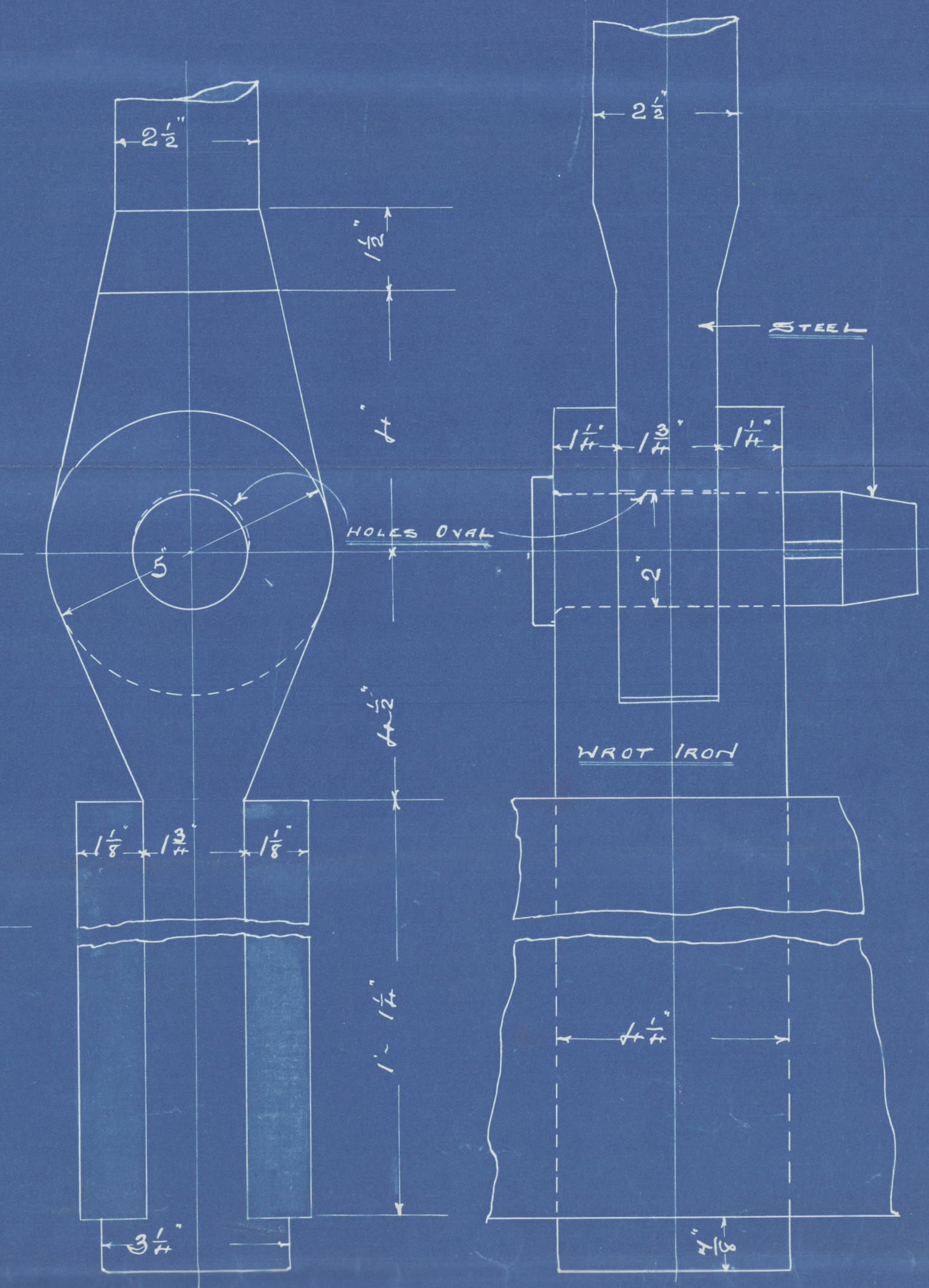
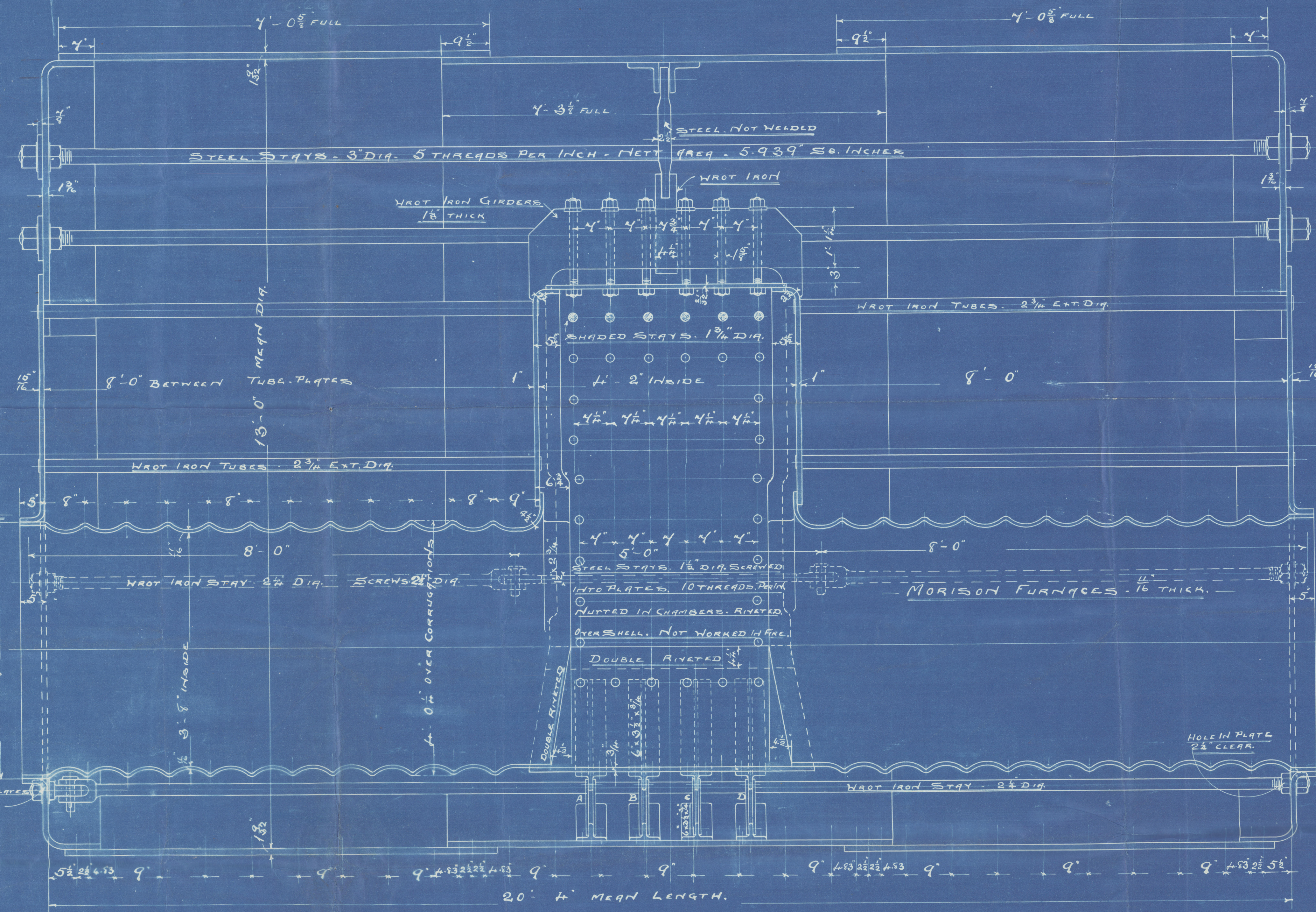
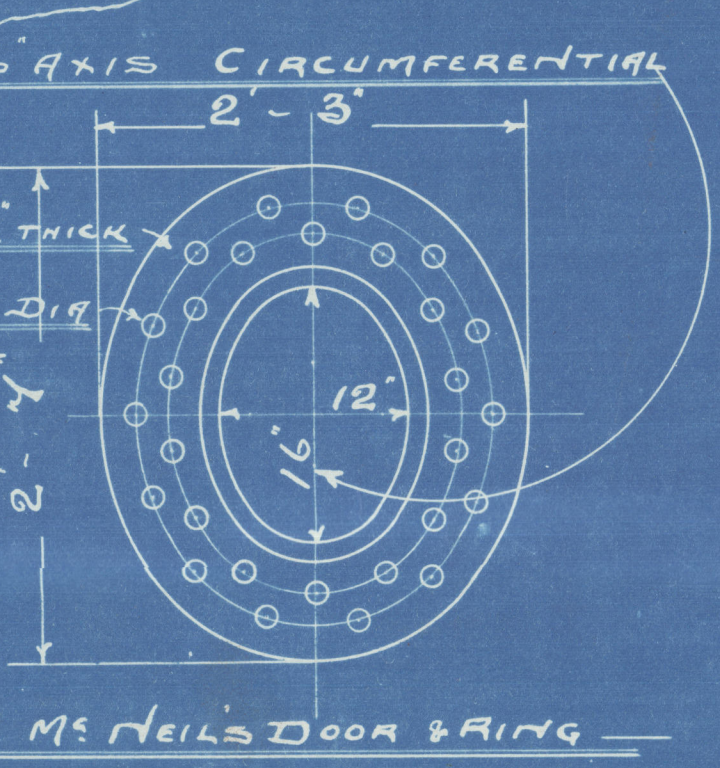
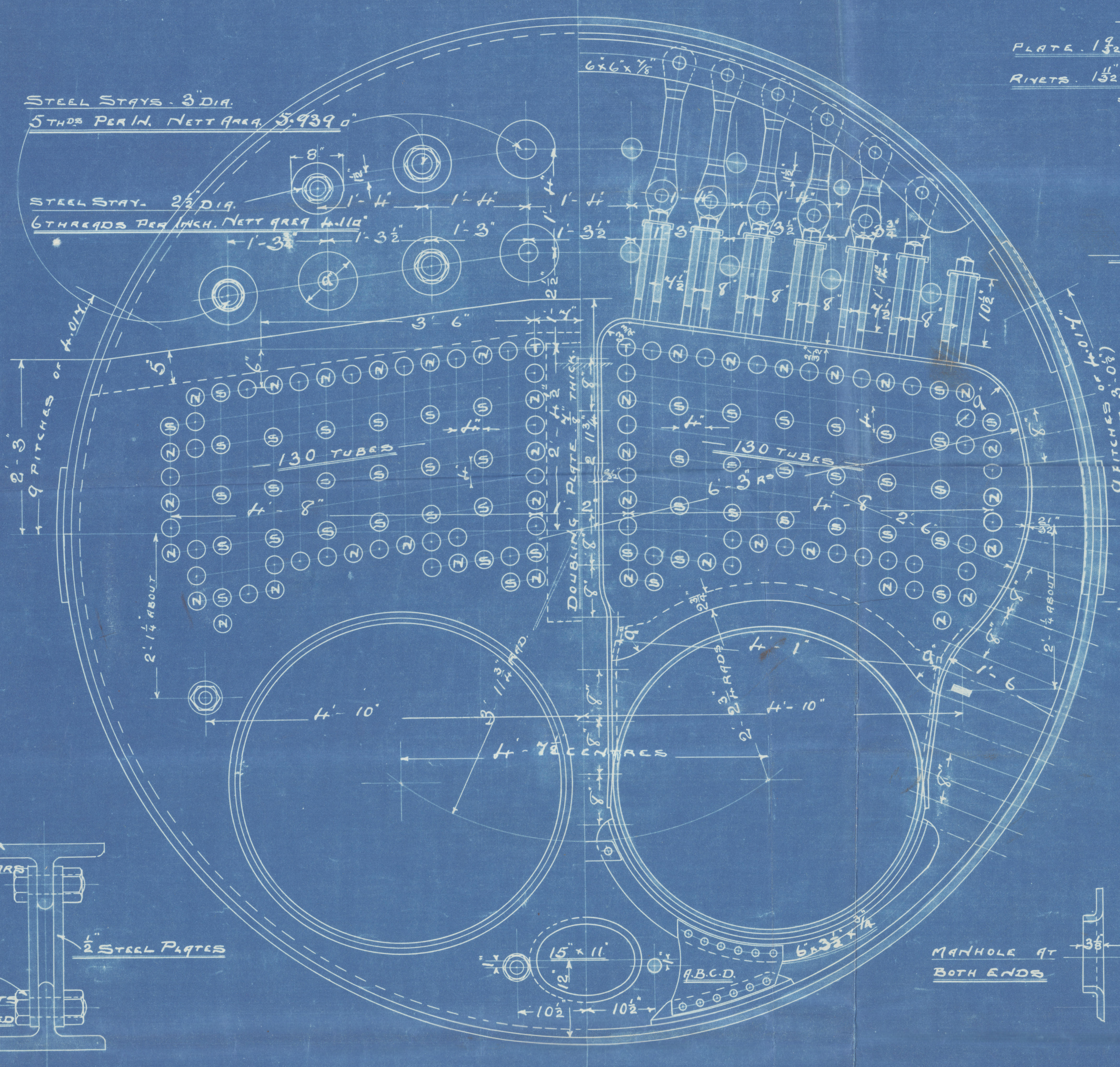
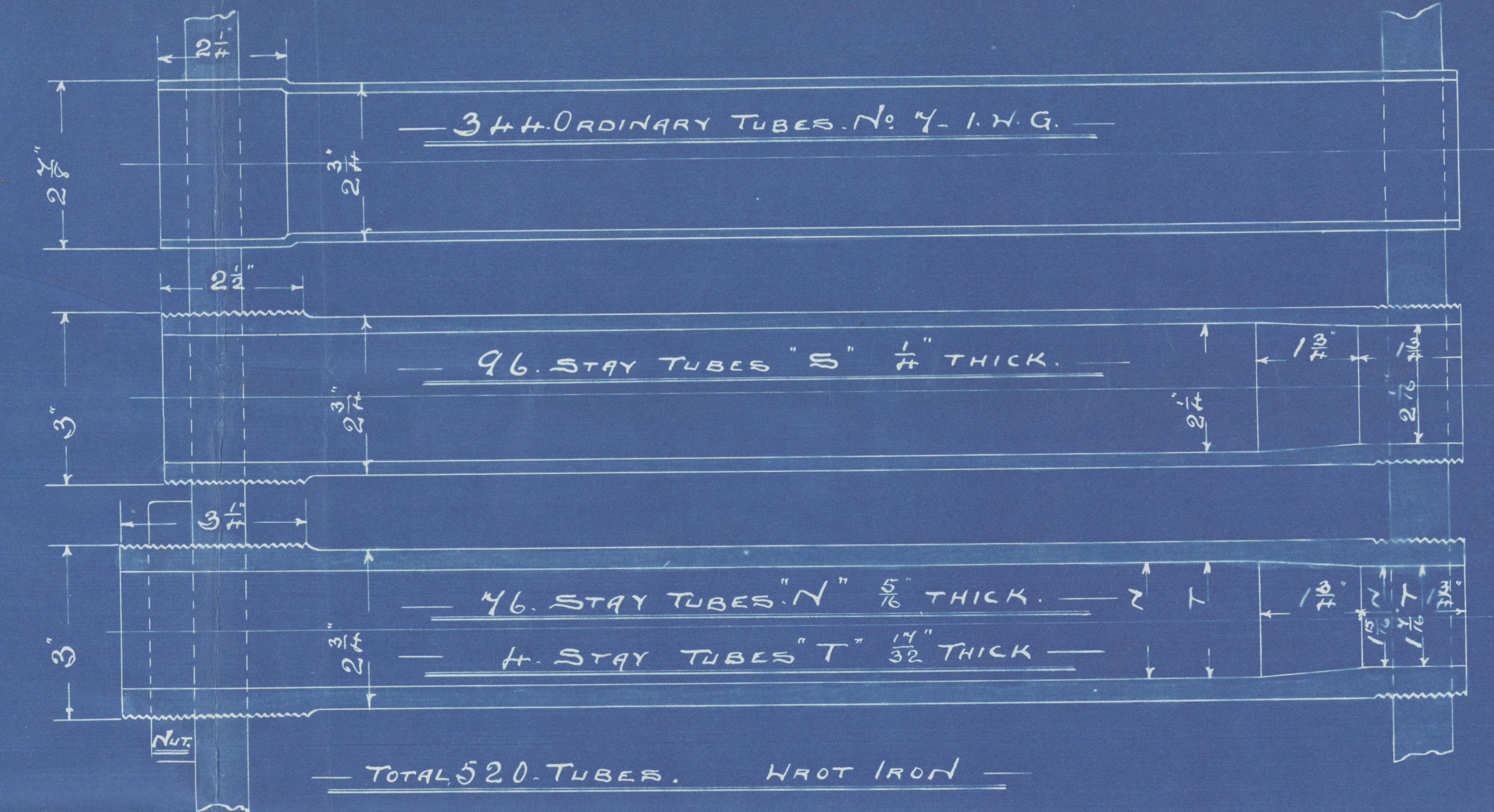


31.8.04



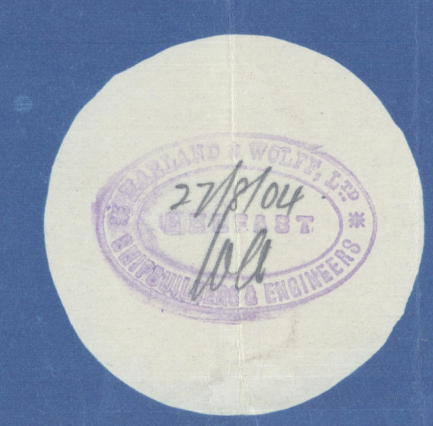
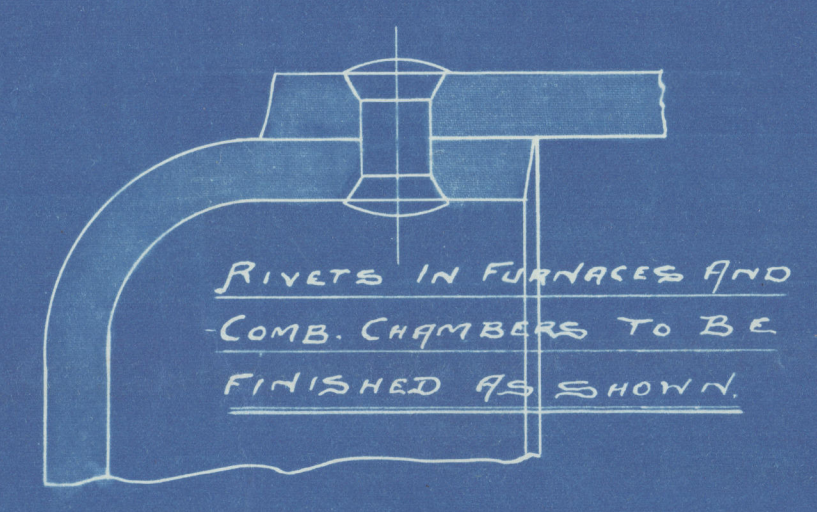
HEATING SURFACE	1 BOILER	2 BOILERS
TUBES	2995	5990
FURNACES	244	488
COMB. CHAMBERS	175	350
FRONT TUBE PLATES	40	80
TOTAL	3454	6908
GRATE SURFACE	86.25	172.5



PARTICULARS OF RIVETING

LONGITUDINAL SEAMS - DOUBLE BUTT STRAPS - RIVETED AS SHOWN.
SHELL - STRENGTH OF PLATE 85.06%. STRENGTH OF RIVET 85 H. %.
CIRCUMFERENTIAL SEAMS - TABLE RIVETED AT CENTRE. AS SHOWN.
END PLATES - LAPPED. DOUBLE RIVETED. 1/4 RIVETS. 3/4 PITCH.
FURNACES & COMB. CHAMBS. - DOUBLE RIVETED. 1/4 RIVETS. 3/4 PITCH. SINGLE RIVETED. 1/4 RIVETS. 2/4 PITCH.
ALL PLATES & RIVETS STEEL. ALL HOLES DRILLED IN PLACE.
MINIMUM TENSILE STRENGTH OF SHELL PLATES. 29 TONS PER SQ. IN.
MAXIMUM. 32 TONS.
MINIMUM. BUTT STRAPS 29 TONS.
MAXIMUM. 32 TONS.

WORKING PRESSURE	200	LBS PER SQ. INCH
TEST	400	



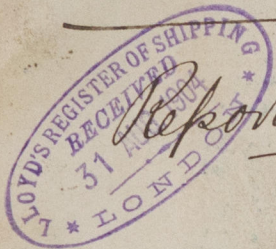
UNDER SURVEY OF:-
BOARD OF TRADE.
HAMBURG BAUPOLIZEI
REGISTRO ITALIANO.

2-OFF

MAIN BOILER N° 368

SCALE - 1" = 1'-0"

Boefact
Carlandt Wolff
I.S.S. 368
Main Boilers
SS. Bologna



Report No. 5915

W577-0034



© 2021

Lloyd's Register
Foundation