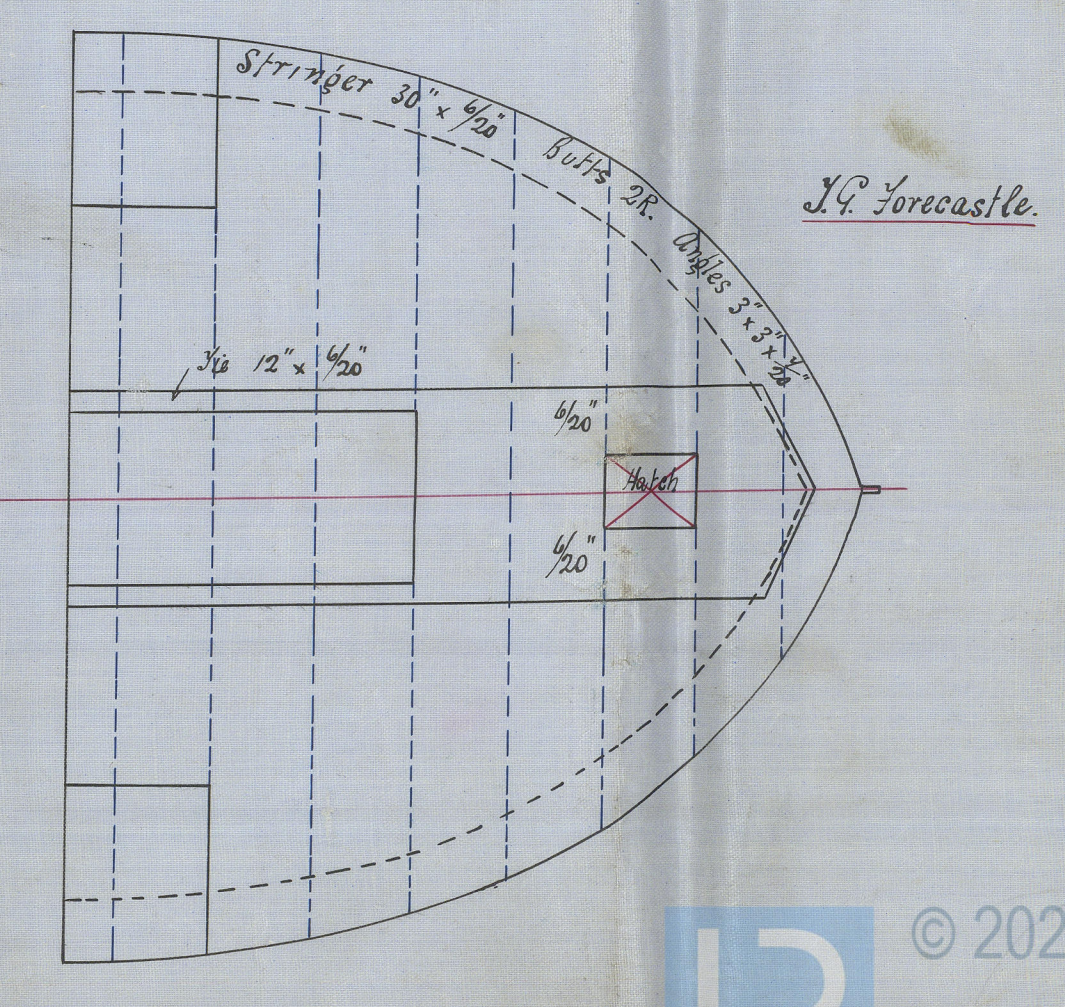
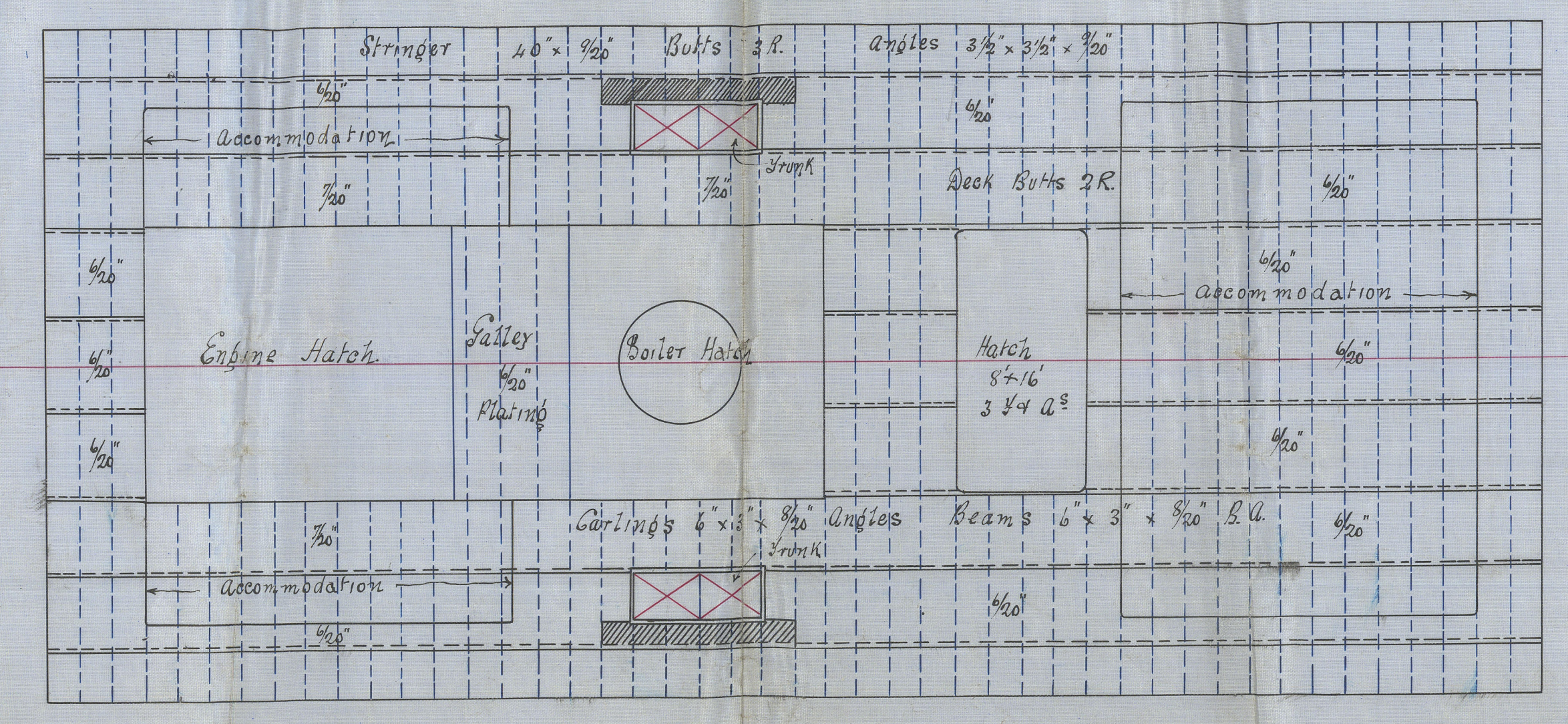
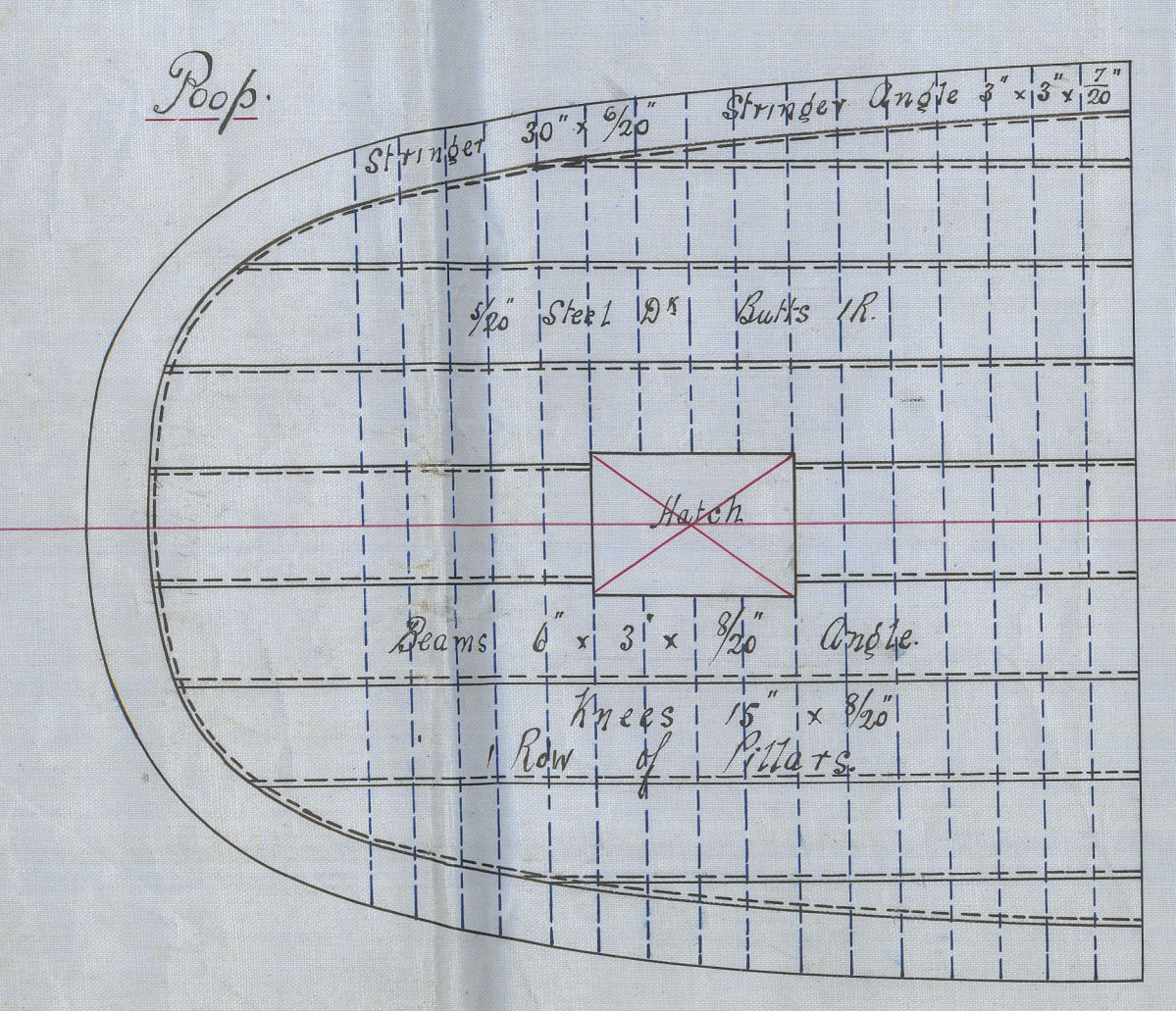
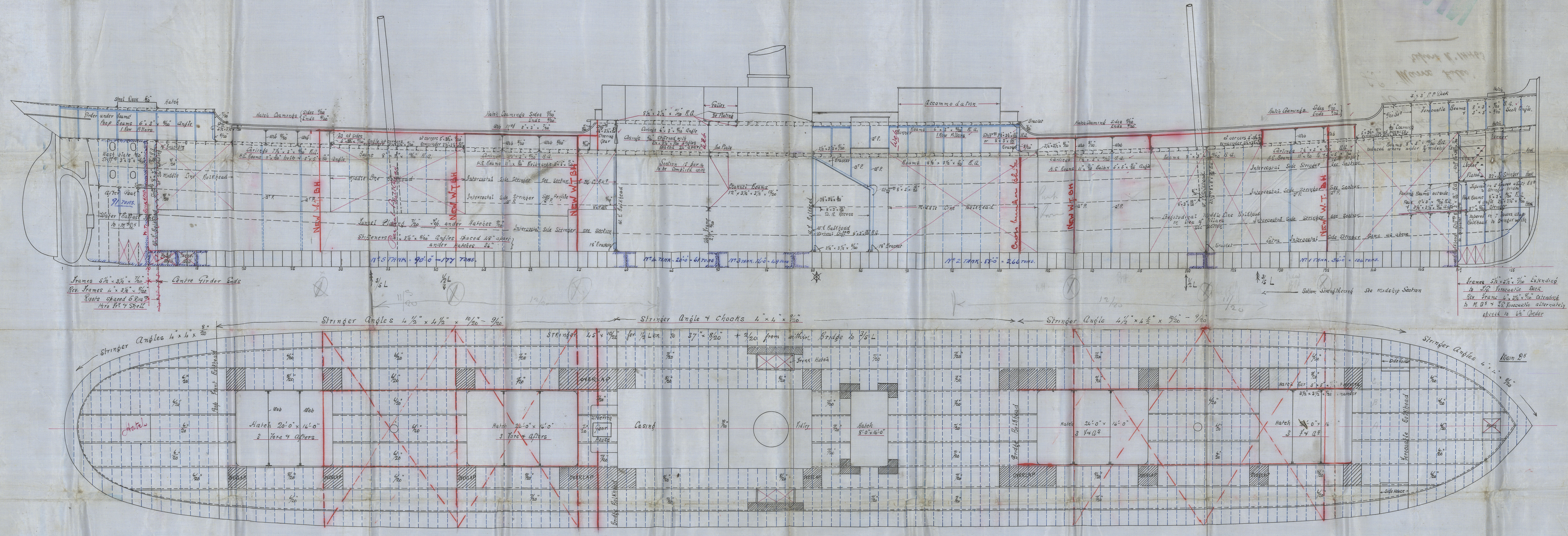


11.11.04

— LONGITUDINAL SECTION & DECK PLANS —
— S.S. N° 176 —
— SCALE 1/8" = 1 FOOT —
— LENGTH BP 315'0" BREADTH ML 44'6" DEPTH ML 23'8" —



Longitudinal Plans
Hamilton Co.
No. 146.

S.S. 'Marx Isles'
Greenock's report N° 14463

REMAIN



© 2021

W574-0164

Lloyd's Register
Foundation