

BLAIR Co.

Boilers No 1978-9.

Duplicate of

No 1966 - 7 - 8 - 9.

S.S. Llanfair

MDB. RPT. No. 13353

B No 1978.

No.	6638
LLOYD'S TEST.	
	320 lbs.
WP.	180 lbs.
	18.528 PTB

Llanfair

B No 1979.

No.	6662
LLOYD'S TEST.	
	320 lbs.
WP.	180 lbs.
	8.928 PTB

Llanwern

S.S. Llanwern

MDB. RPT. No. 13431

LR

Lloyd's Register
Foundation

WST-0208

MARINE ENGINES NO 1978. 1979. 1980.

MESSRS BARTRAM & SONS LTD S.S. NO 263. 264.

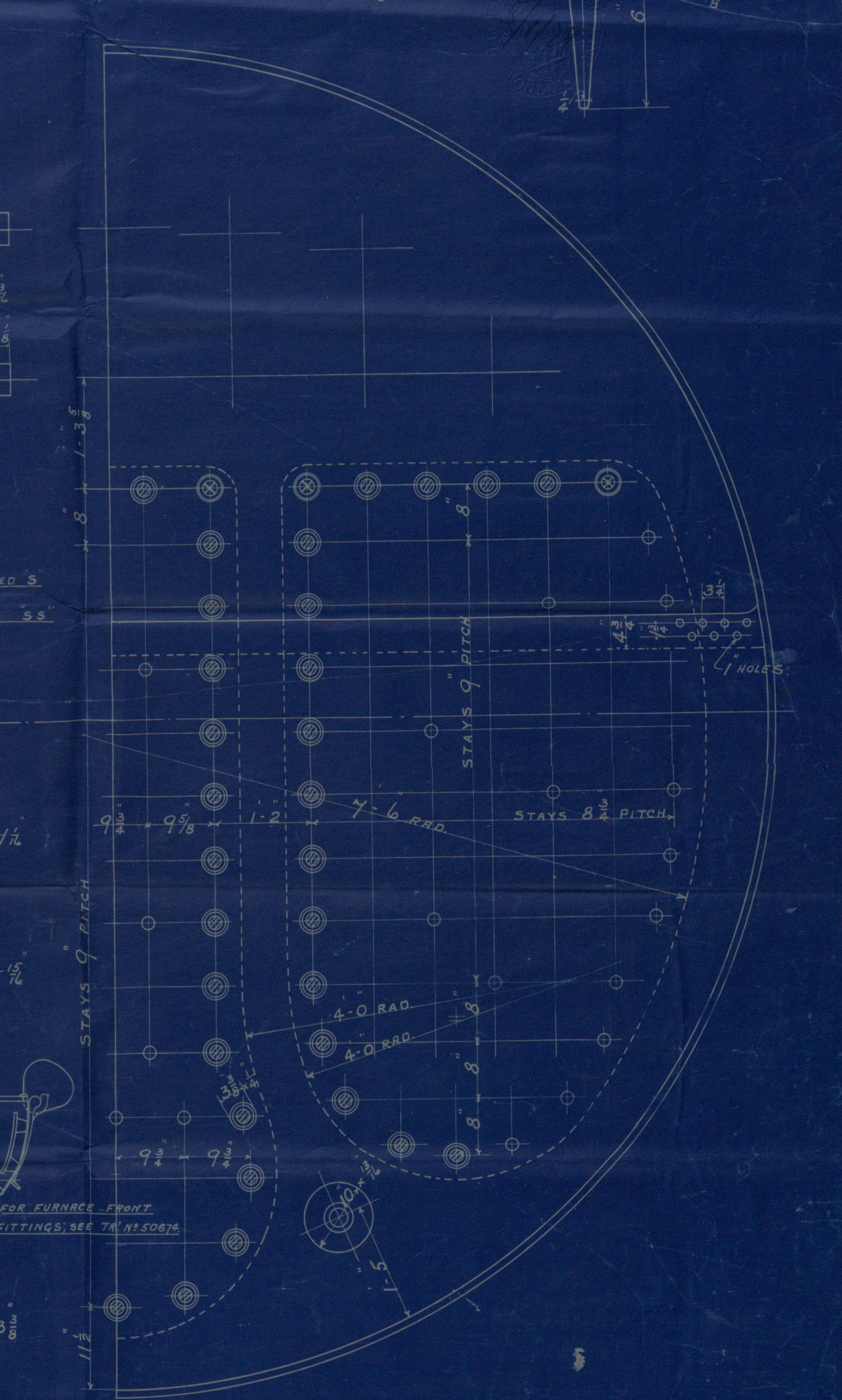
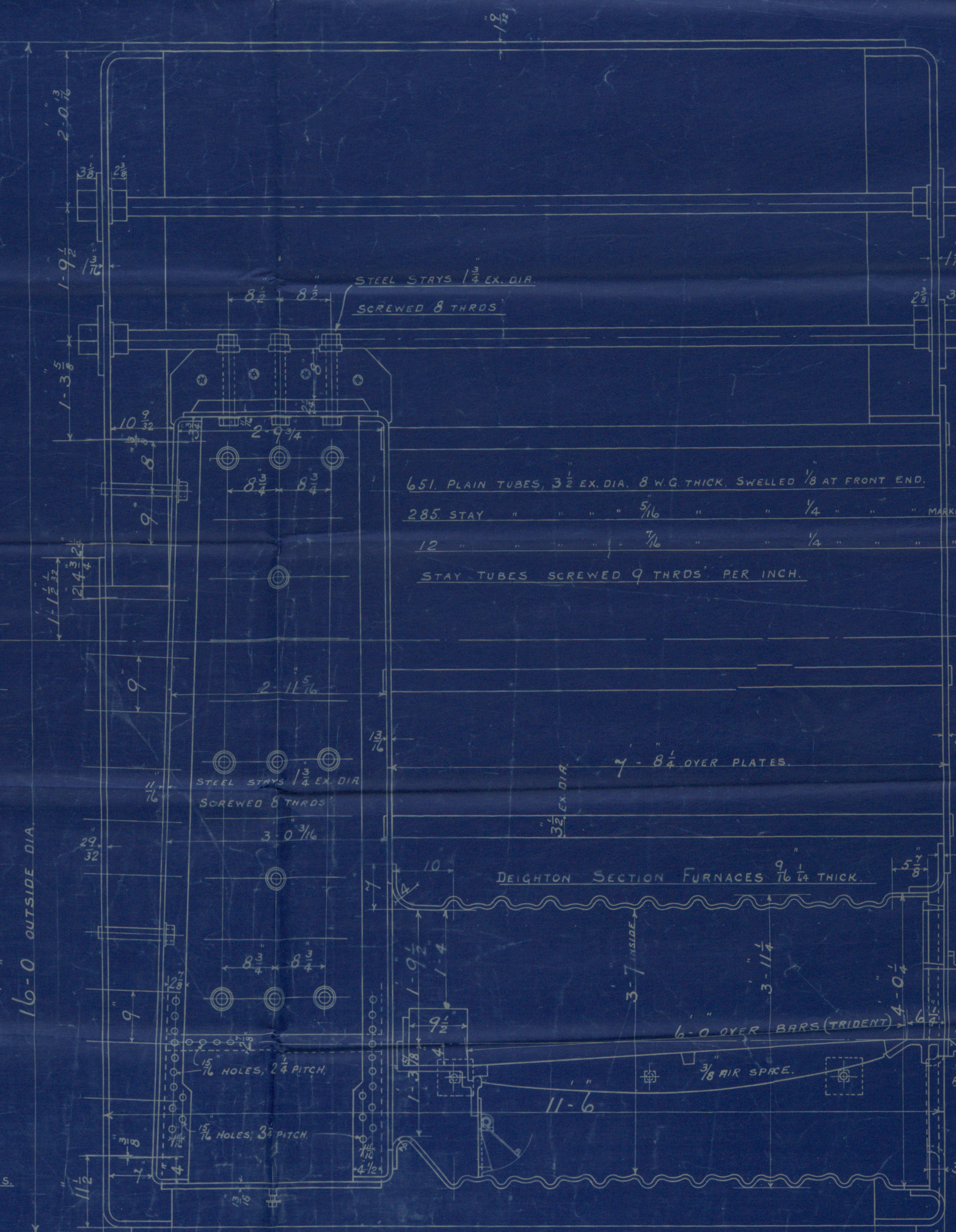
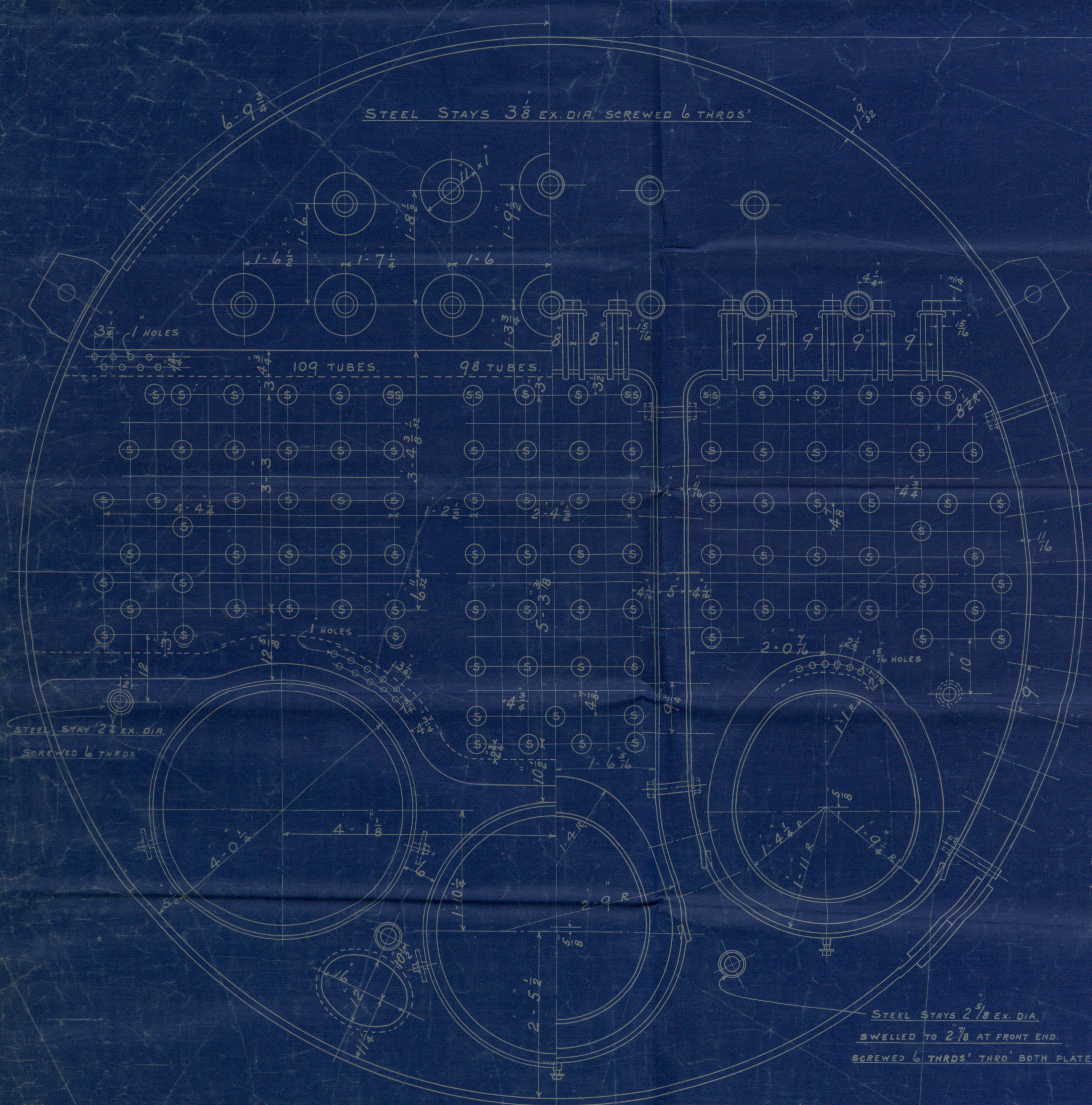
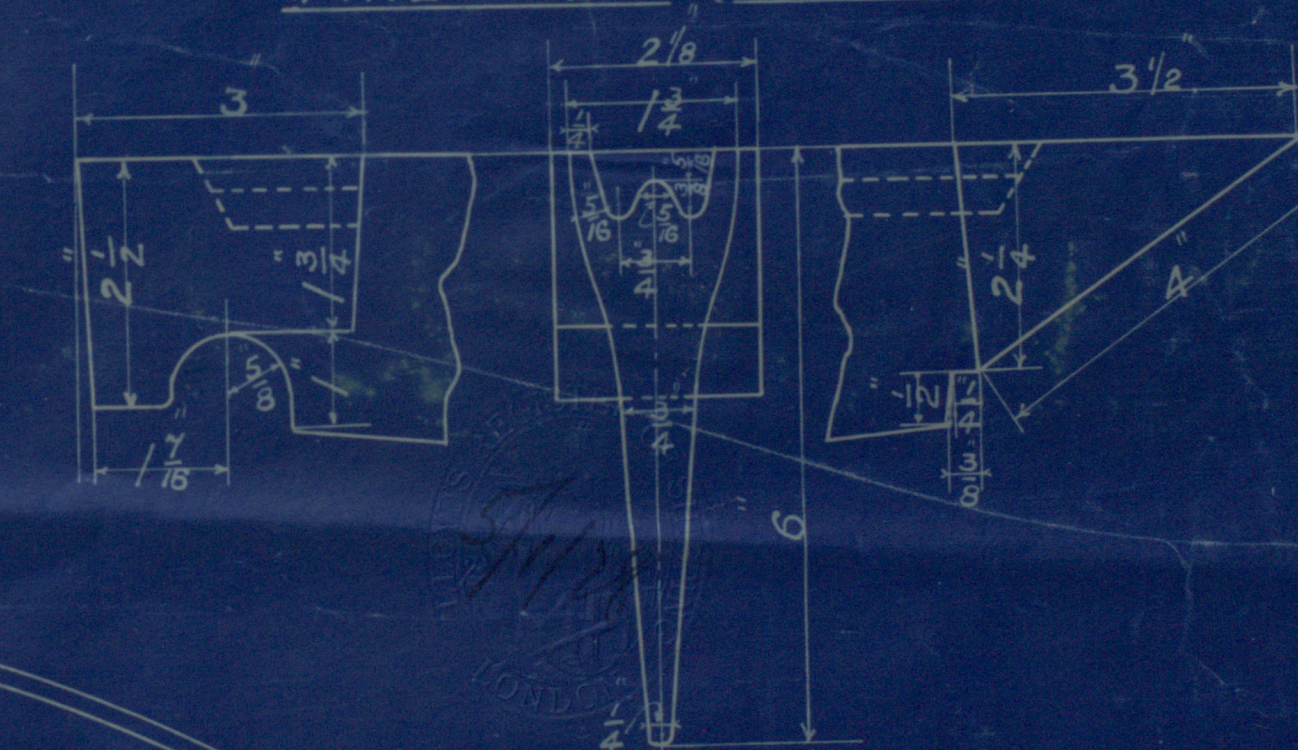
BOILERS S. 3-OFF.

SCALE 1 INCH TO A FOOT

150. LBS. W. P.

BOILERS TO LLOYDS REQUIREMENTS & TESTS, INCLUDING HYDRAULIC TEST TO 320 LBS. PER SQ. INCH.

FIRE BARS (TRIDENT PATENT)



TOTAL HEATING SURFACE IN THREE BOILERS = 7917 SQ. FT.

TOTAL GRATE SURFACE IN THREE BOILERS = 197 SQ. FT.

TENSILE STRENGTH OF SHELLS, BUTT STRAPS, MANHOLE STIFFENERS, DOORS & GIRDERS 28 TO 32 TONS.

OTHER PLATES, SCREW STAYS & FURNACES 26 TO 30 TONS.

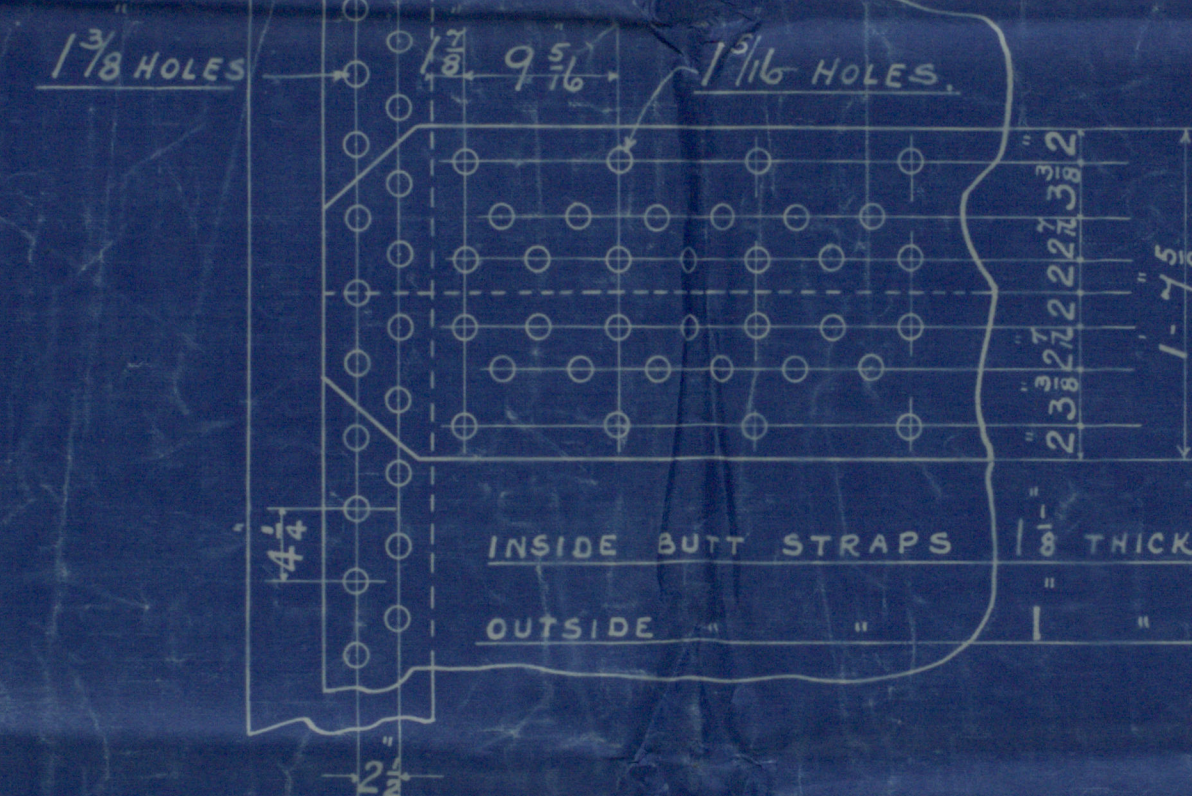
MAIN STAYS 28 TO 32 TONS.

E70L E 428 FULL SET OF SPIRAL RETARDERS FITTED IN BOILER TUBES. E790 E815 E839 E864
N° 1966 N° 1967 N° 1968 N° 1969

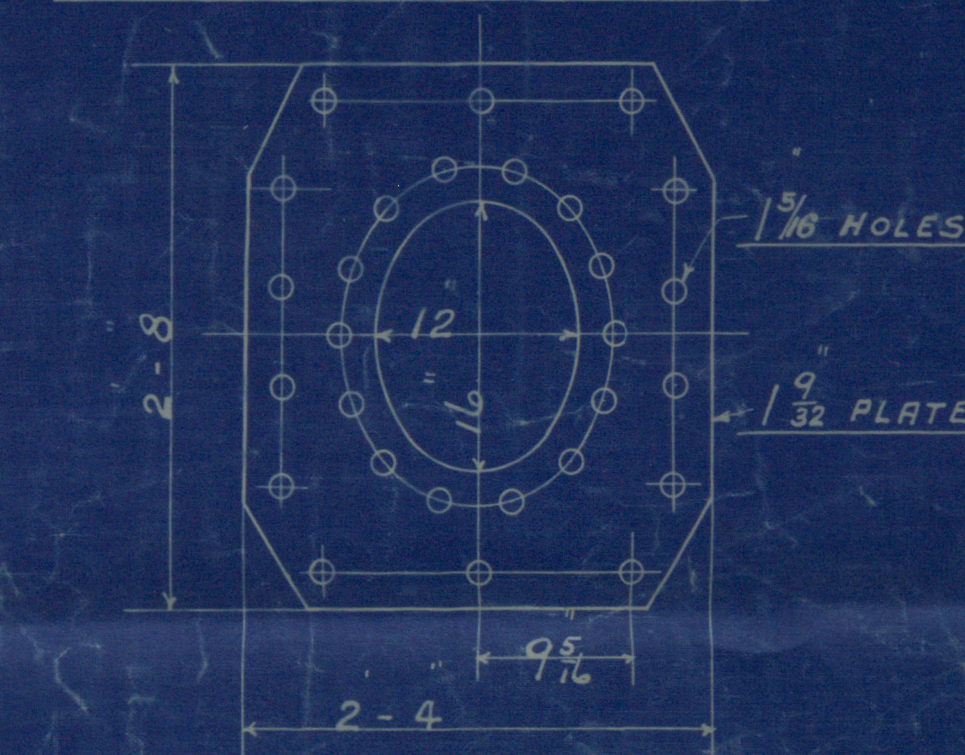
BOILERS COVERED WITH NON CON COMPO. ON CIRCULAR PARTS ABOVE SEATING & WHOLE OF BACKS.

& LAGGED WITH SHEET IRON ON CIRCULAR PARTS.

BACK OF BOILERS COVERED WITH SHEET IRON 8 W.G. THICK TO BE MADE A DUST TIGHT FIT & ATTACHED TO ANGLE BAR RIVETED ON TANK TOP.



TOP MANHOLE STIFFENING PLATE.



STEEL SCREW STAYS MARKED THUS: ⊗ ARE 2 1/8 EX. DIA. NUTTED AT BOTH ENDS.

OTHER STEEL SCREW STAYS IN BACK ARE 1 3/4 EX. DIA. NUTTED AT FIRE SIDE END.

& PROJECT 3/8 THRO' PLATE AT OUTER END & CAULKED.

ALL SCREW STAYS ARE 8 THRS. PER INCH.

STUDS FOR CARRYING ZINC PLATES - 63-OFF

ZINC PLATES TO OUR USUAL NUMBER (36 OFF)

HALF SIZE.

