

TELEGRAMS:
"BOILER, WOLVERHAMPTON".

TELEPHONES,
1138 (3 LINES) WOLVERHAMPTON.
REGENT. 3216 (2 LINES) LONDON

Established 1840.

WOLVERHAMPTON,
Eng.



GOLD MEDALS
1891-92 AND 1910.

DIPLOMA FRANCO-BRITISH
EXHIBITION 1908.

LONDON OFFICE,
IMPERIAL HOUSE,
KINGSWAY, W.C.2.

MANCHESTER OFFICE,
KING'S HOUSE,
KING STREET WEST.

YORKSHIRE OFFICE,
42, ROYAL EXCHANGE CHAMBERS
CITY SQUARE,
LEEDS.

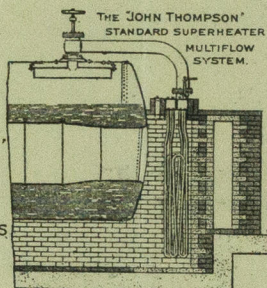
GLASGOW OFFICE,
50, WELLINGTON STREET

CARDIFF OFFICE,
PRINCIPALITY BUILDINGS
QUEEN STREET,

Dr. to

Nearest Stations:-

LM. & S.R. ETTINGSHALL ROAD. (2 MINUTES)
G. W. R. PRIESTFIELD. (10 MINUTES.)



GOVERNING DIRECTORS. DIRECTORS.
JAMES THOMPSON. E. BRAZIER.
A.E. THOMPSON. J. JEAVONS.
W.J. THOMPSON. D.A. HILL.
S.J. THOMPSON. P.L. TURNER.
A. JEAVONS.
W.E. PINNEGAR.
J. W. PERRY.



Codes Used:-

A.B.C. 5TH & 6TH EDITIONS.
ENGINEERING, LIEBER'S, PRIVATE.
WESTERN UNION. MARCONI.
SALIS. BENTLEY'S

Messrs. Riley Bros (Boilermakers) Ltd.,

Persoverance Boiler Works, STOCKTON-ON-THEE. 26th. Oct. 1928.

YOUR ORDER NO. **R.1453.**

OUR ORDER NO. **F.3285/00.**

3. "Deighton" type Corrugated Furnaces

2'11 3/4" diameter x 7'0.1/4"

long overall, with Stephen Gourlay 1 18 1 0

Backends, 3'4 outside diameter at

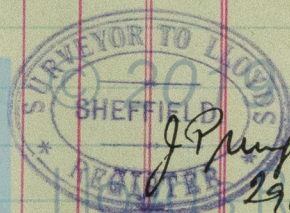
mouth, 3/8" thick, for their

reference Boilers 5848/9.

Plate Makers:- Messrs. Guest Keen & Nettlefolds Ltd.,
CARDIFF.

Test Particulars:-

2 Plates test No. 5388.
One Plate test No. 4959.



WS7-0161



Foundation