

MARINE ENGINES N° 1981 1982

TRACING N° 5664H

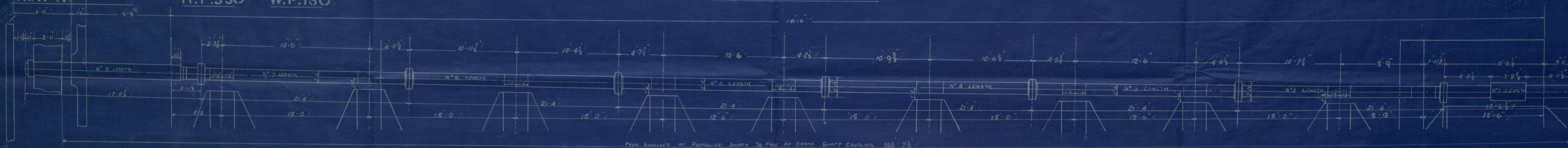
PRINT N°

H.P.330

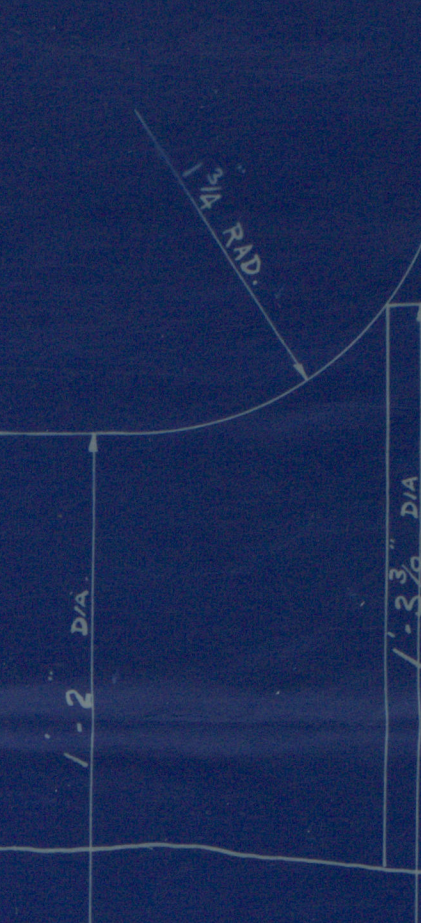
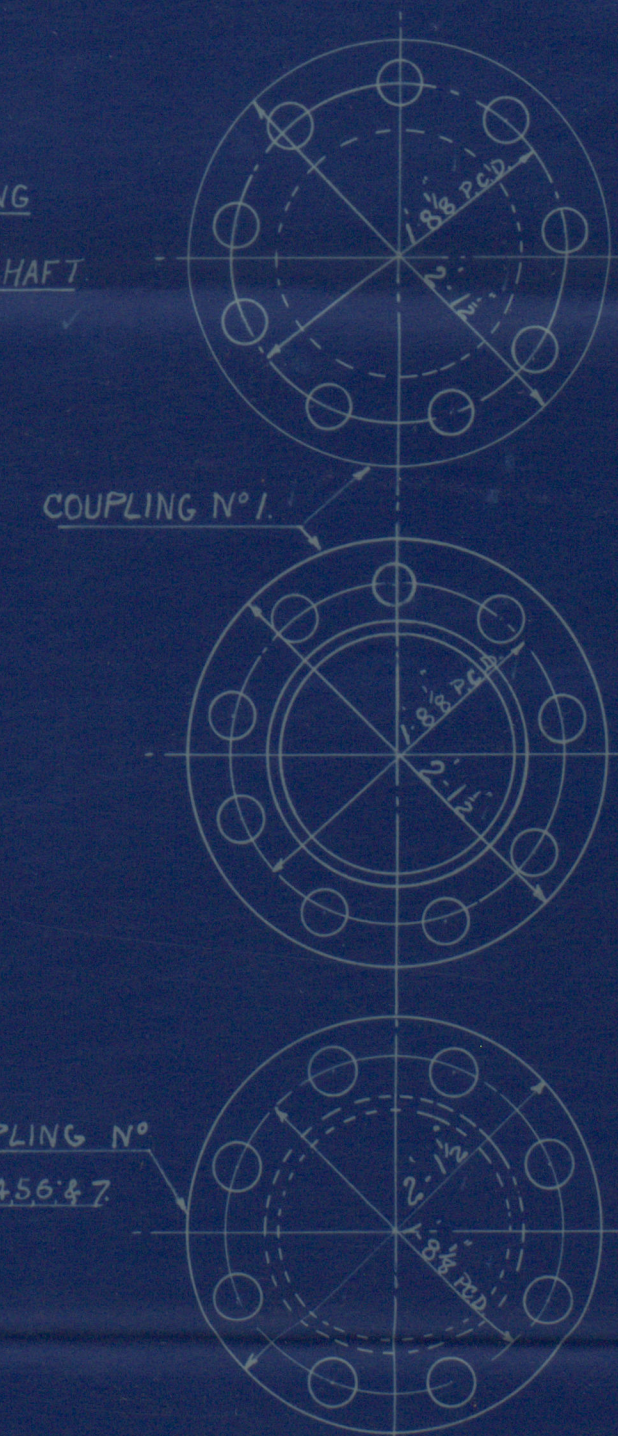
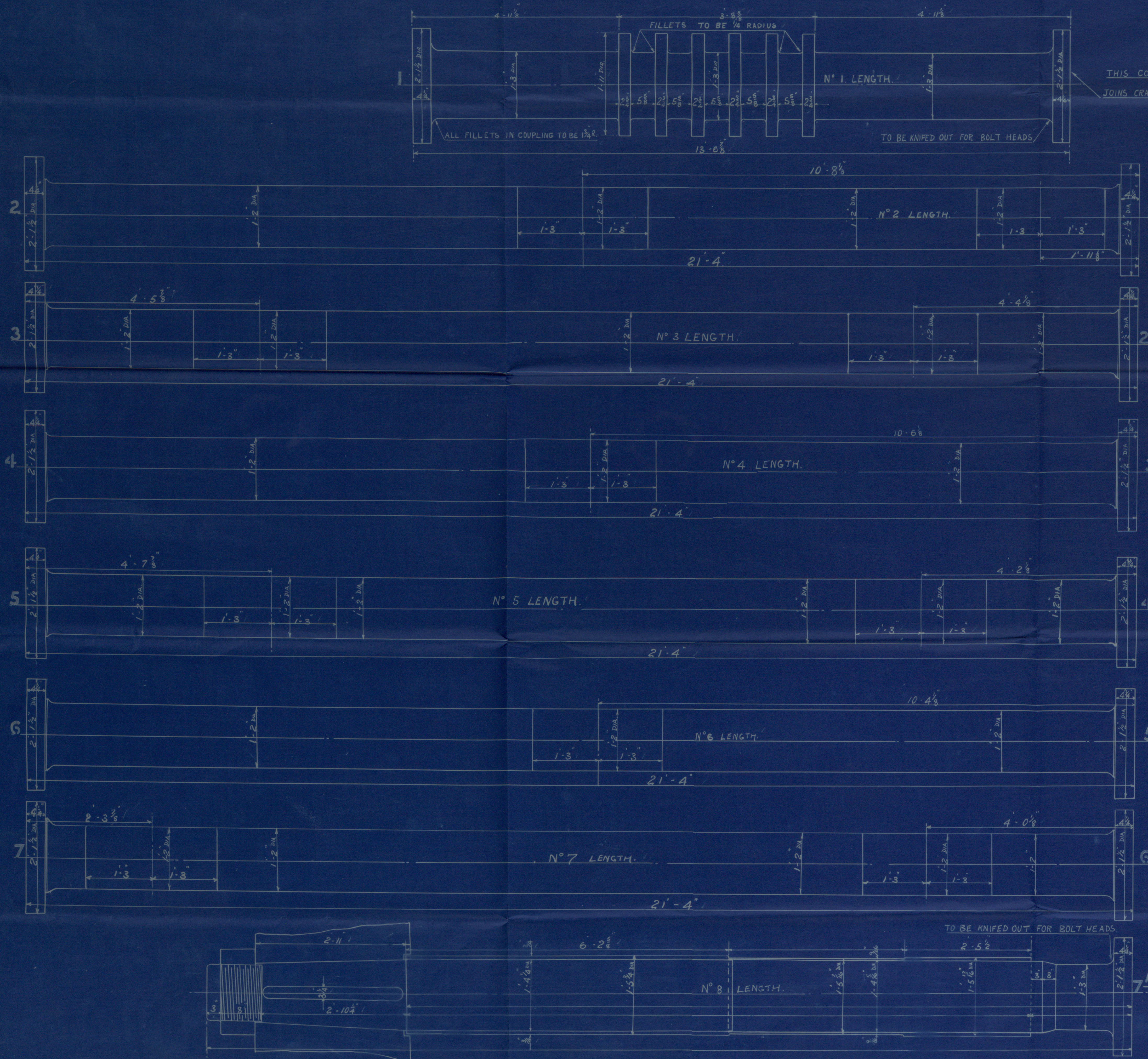
W.P.ISO

SCREW SHAFTING

SCALE 1/4 INCH TO A FOOT

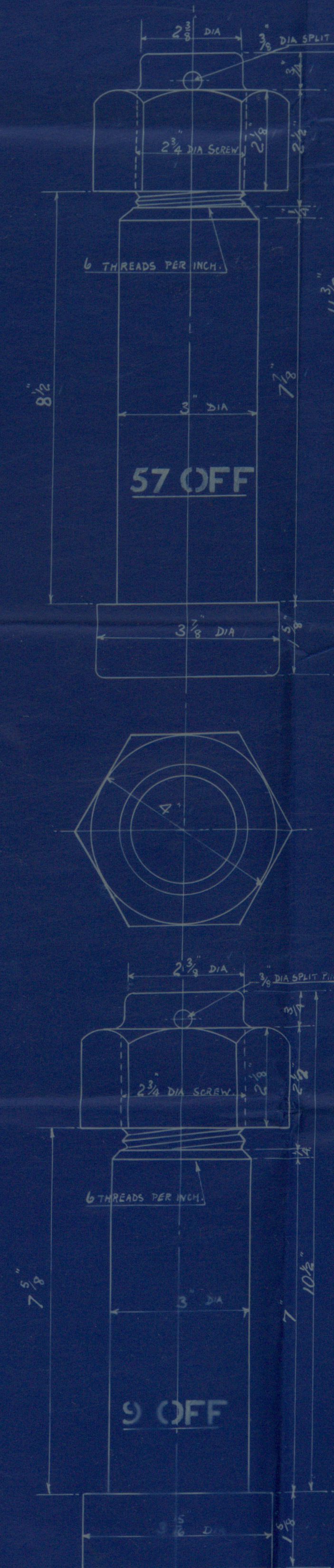


SCALE 1 INCH TO A FOOT



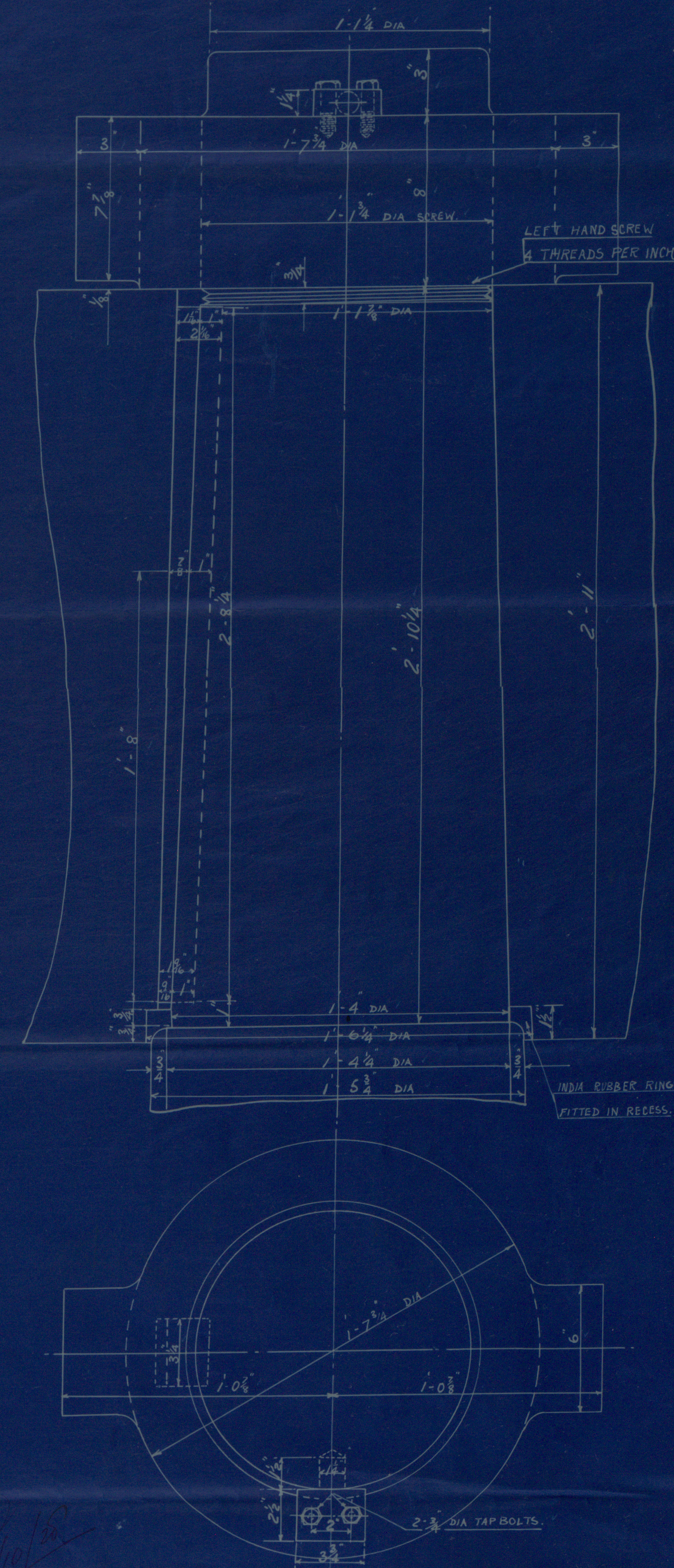
DETAIL OF FILLETS.
FULL SIZE.

HALF SIZE



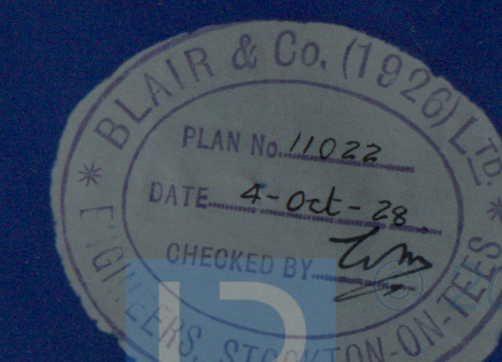
NOTE - ALL COUPLING BOLTS TO BE
DRIVEN IN FROM AFT.

SCALE 3 INCH TO A FOOT



BLAIR & CO 1926 LIMITED
ENGINEERS
STOCKTON ON TEES

SPARE TAIL END SHAFT E.148. ORDER 1981



From BLAIR & Co. (1926) Ltd.,
STOCKTON-ON-TEES.

For Enclosure to

Messrs Lloyds

Middlebrook

W57-0118 2/2

Blair Co

N^o 1981-2

for

Barham & Sons N^o 265-6

SHAFTING

Lanark



© 2019

Lloyd's Register
Foundation

W57-0118