

W57-0117

RILEY Bros.

Nos 5848-9.

12'-6" x 11'-0" x 120 lbs.

for.

Bartiam & Sand No. 265-6

Riley Bros

5848/9

268. Llanorth
266. Llanishen

B. No. 5848.

No. 6672.
LLOYD'S TEST.
230 lbs.
w.p. 120 lbs.
29. 11. 28 PTB

B. No. 5849.

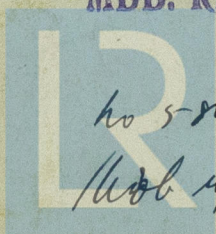
No. 6705.
LLOYD'S TEST.
230 lbs.
WP. 120 lbs.
26. 4. 29 PTB.

S.S. 5848

MDB. RPT. No. 13489

ho 5-29

1606 rpt ho. 13662



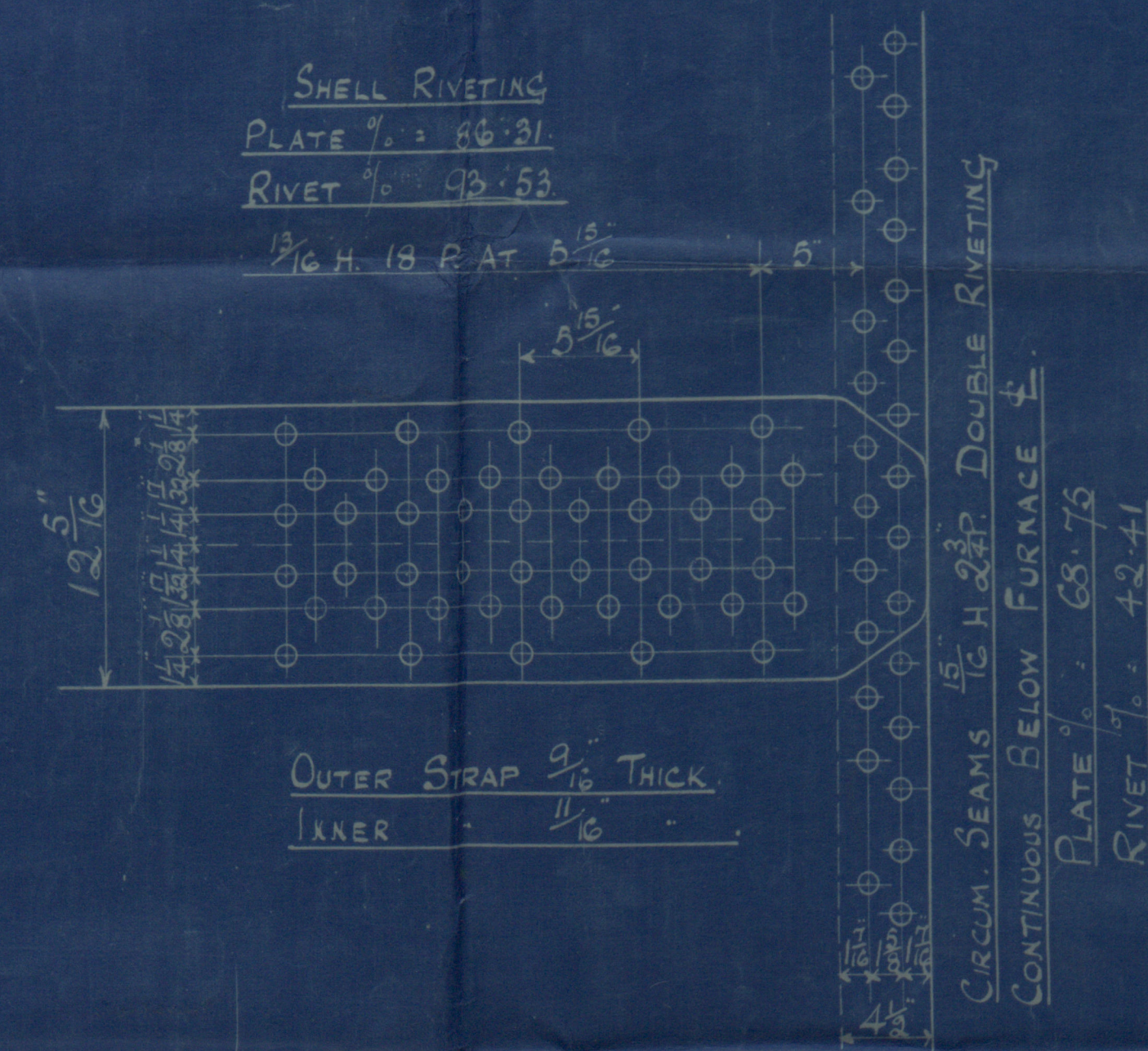
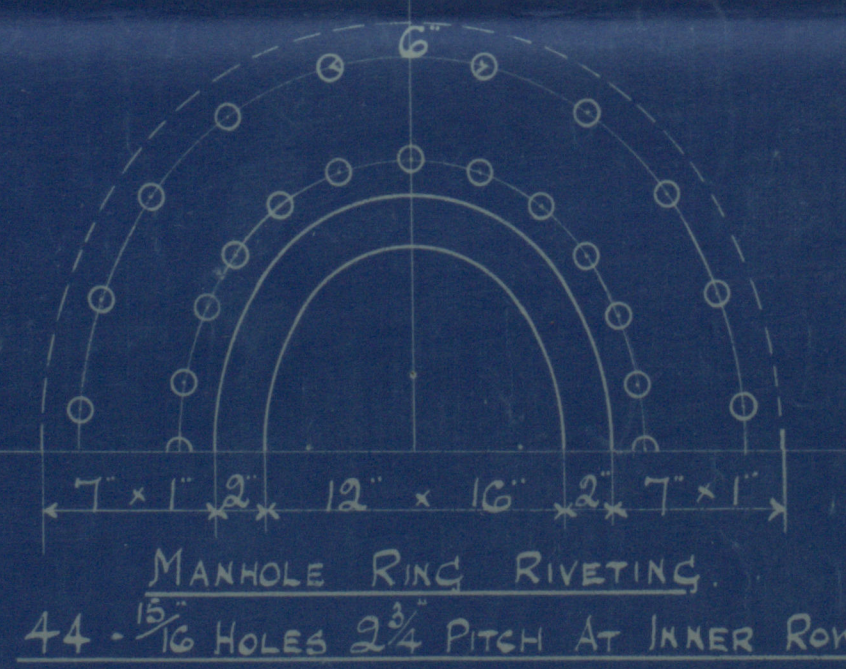
© 2019

Lloyd's Register
Foundation

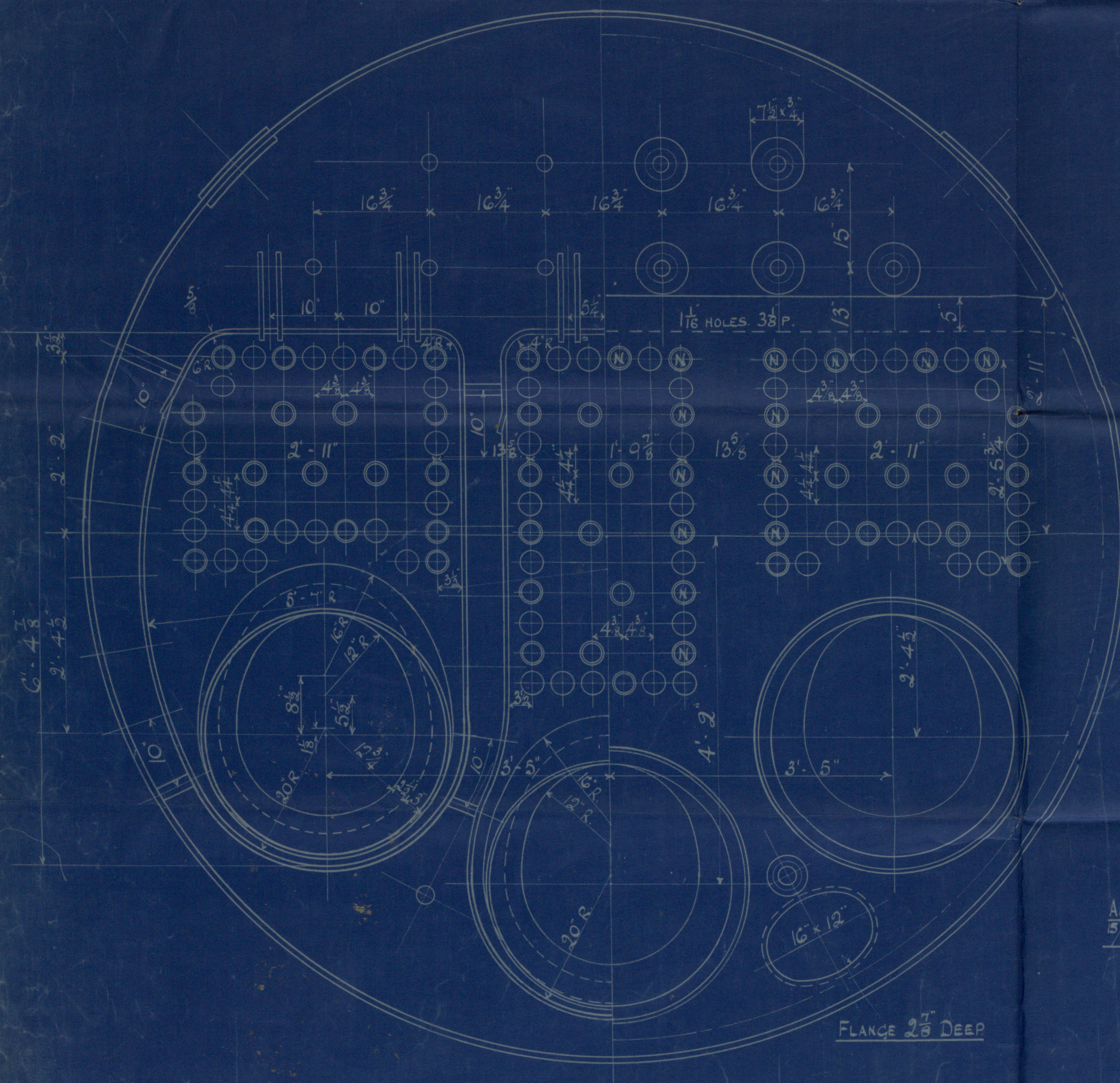
5848-9

SPECIFICATION OF MATERIALS.

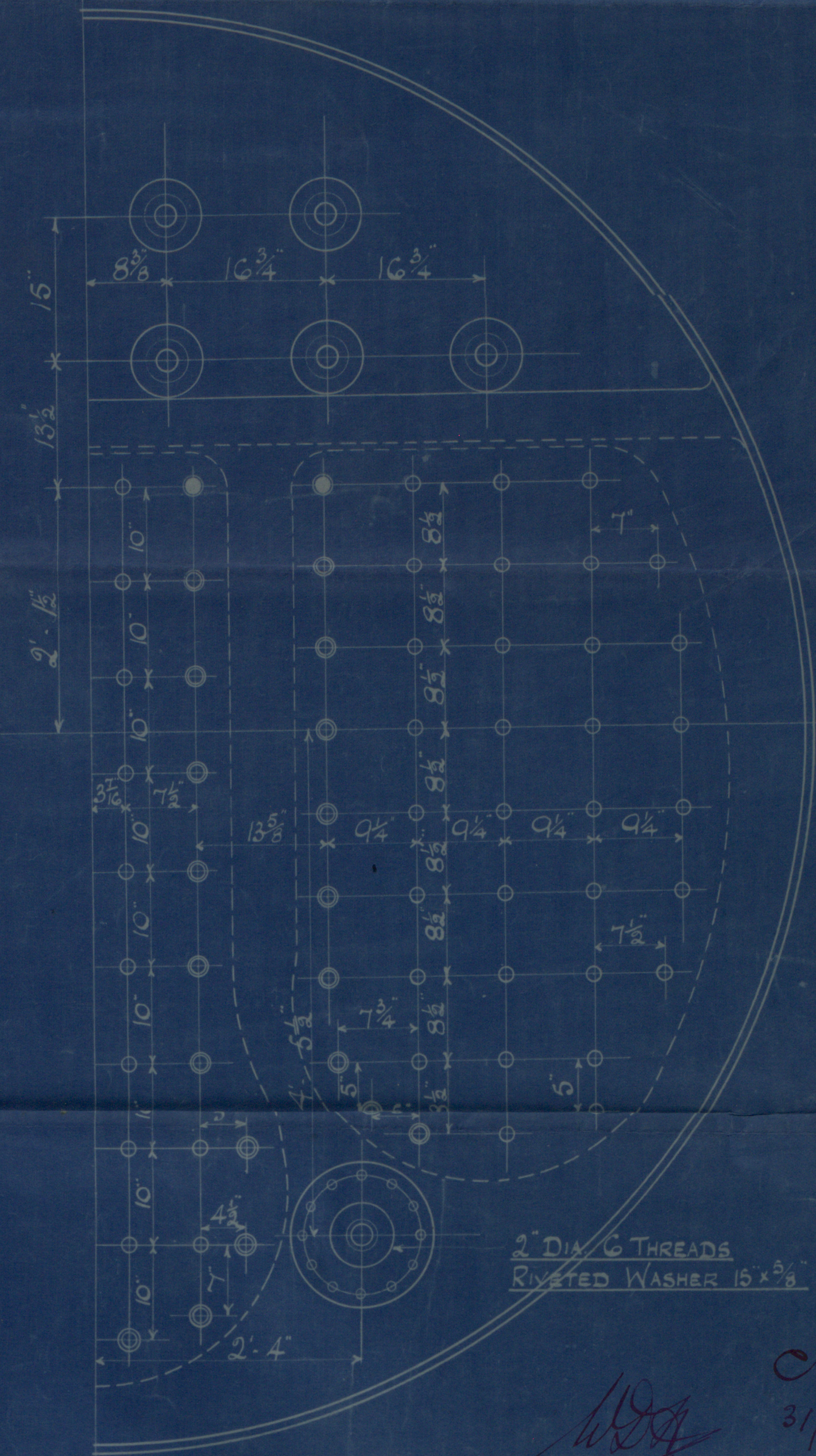
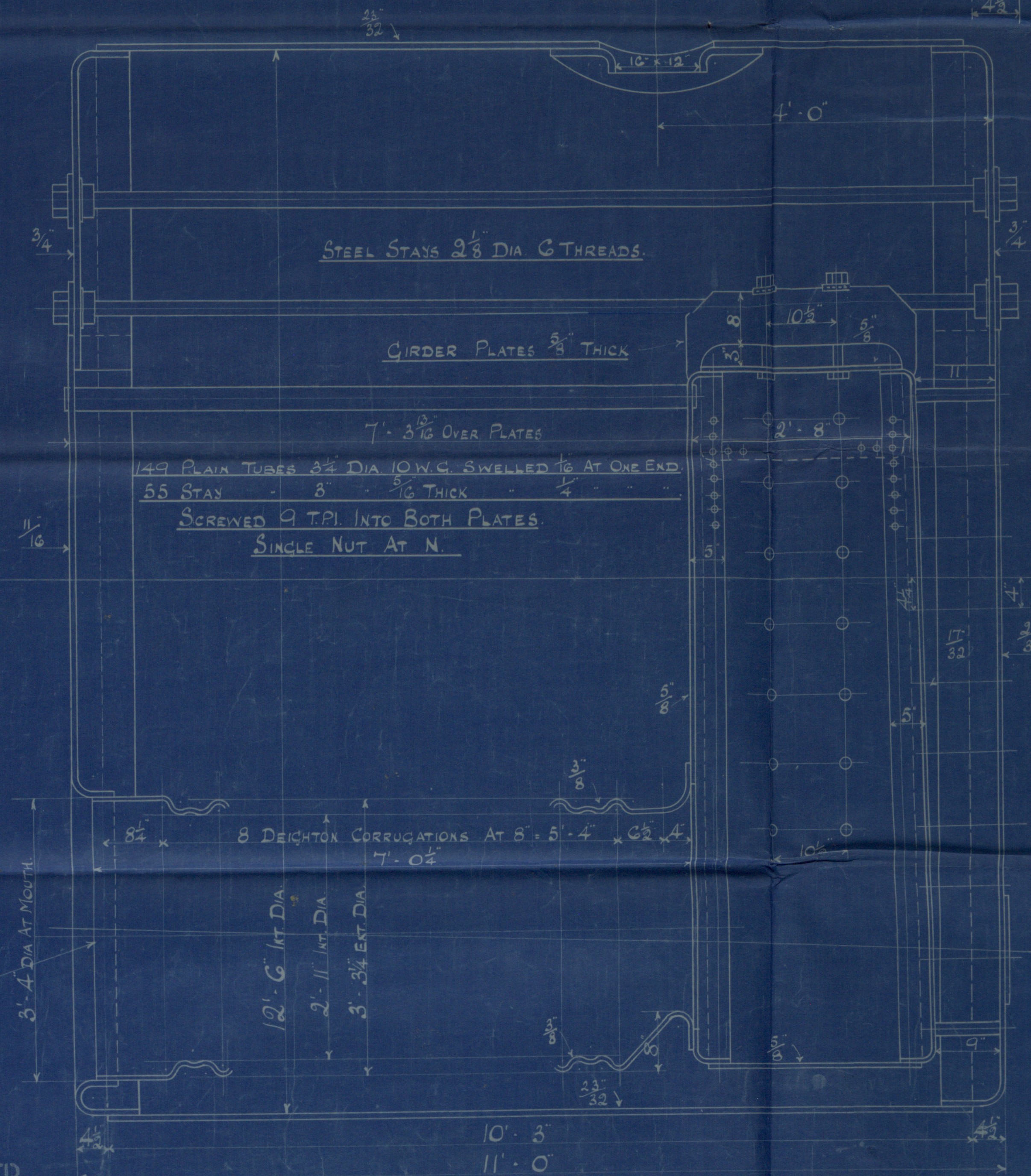
SHELLS STRAPS GIRDERS & MAINSTAYS 28 TO 32 TONS.
BALANCE OF PLATES RIVETS & SCREW STAYS 26-30 "



COMBUSTION CHAMBER SCREW STAYS
SCREWED 9 T.P.I. NUTTED AT ENDS
AT BACK MARK 1 3/8 DIA
1 3/8
1 3/8
AT SIDES 1 3/8
IN GIRDERS 1 3/8



ALL INTERNAL RIVETING
5/16 H. 2 3/4 P. 3" LAP.



HEATING SURFACE 1550 sq ft
GRATE AREA (5' 6 BARS) 50 sq ft