

BUTTS OF KEELPLATE TO BE DOUBLE STRAPPED AND TREBLE
 KNITED: ALL FIVE AND AFT
 BUTTS OF SHELL PLATING FROM A TO J STRAKES INCLUSIVE
 TO BE LAPPED AND TREBLE KNITED FOR 1 LENGTH TO DOUBLE
 KNITED AT ENDS
 BUTTS OF K STRAKE (ANNING DECK SHEERSTAKE) TO BE
 DOUBLE STRAPPED AND TREBLE KNITED *double*
 FOR 1 LENGTH *1 1/2* LENGTHS AND DOUBLE AT ENDS
 LANDINGS OF SHELL PLATING TO BE DOUBLE KNITED FOR 2
 LENGTHS TO SINGLE AT ENDS
 ANNING DECK STRINGER TO HAVE LAPPED BUTTS TREBLE KN
 1 LENGTH TO DOUBLE AT ENDS
 MAIN DECK STRINGER TO HAVE LAPPED BUTTS TREBLE KN
 2 LENGTH TO DOUBLE AT ENDS
 LOWER DECK STRINGER TO HAVE LAPPED BUTTS DOUBLE RIVE

[illegible]

See ledger page 20/4/15. ⁹⁰⁰
D.F.

9 Sept 1945
27 Sept 1945

N^{os} 370 & 371 ³⁸²

MIDSHIP SECTION

SCALE $\frac{1}{2}'' = 1$ FOOT.

71, ^{Shelton} ~~Living~~ St Irish Channel Service -
Dep't Meo & 17-8"
cns 10/4

3. ...
OLYBES

Sept	10 ⁵ 52
1/2 B	20-50
1/2 Girl H	3460
1 st W	7362
	<u>849</u>
2 nd W	25693

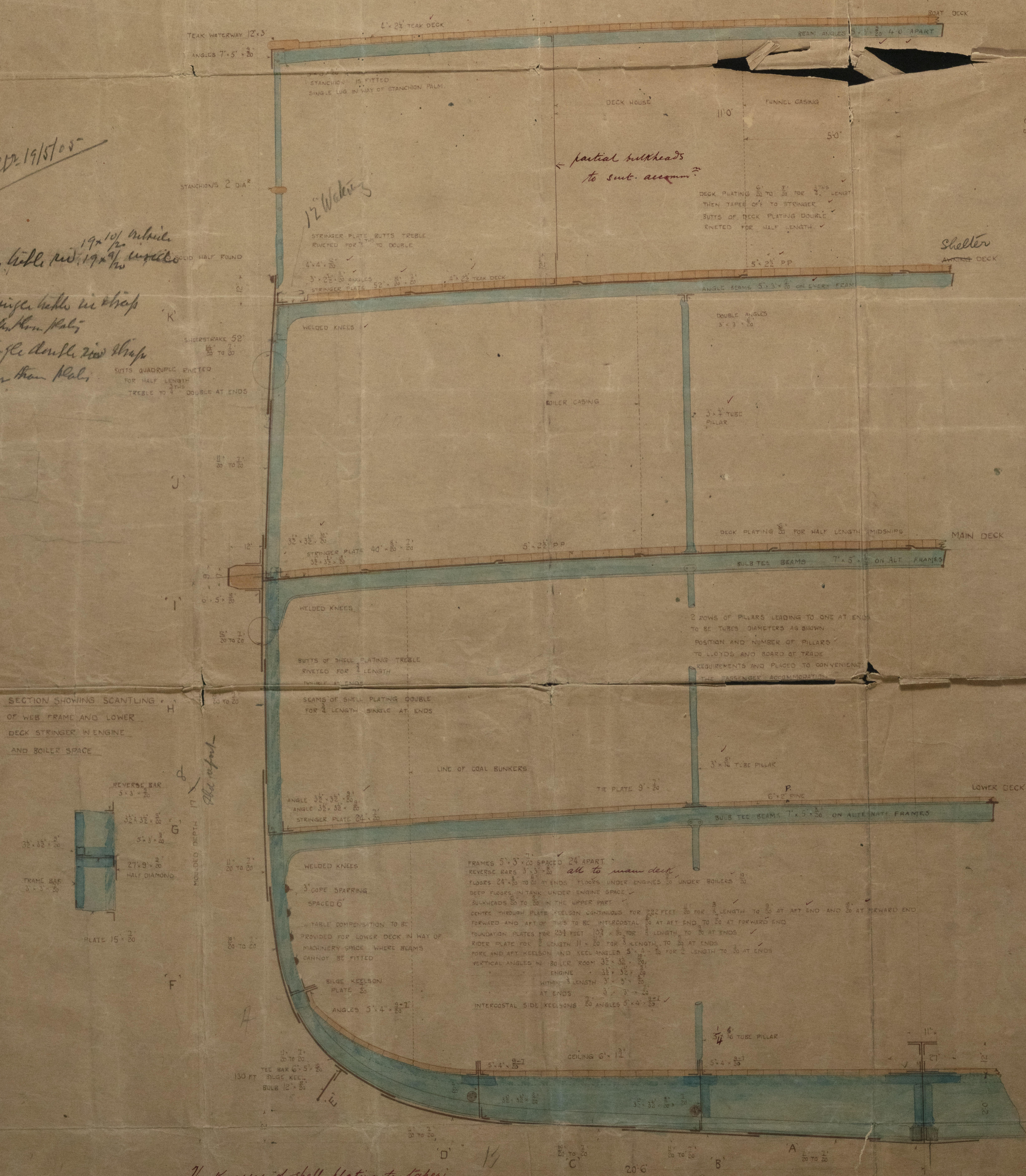
13. 3. 05
17. 3. 05
6. 4. 05
14. 4. 05
20. 4. 05
27. 4. 05
2. 5. 05
19. 5. 05
8. 7. 05
14. 8. 05
4. 10. 05
382. 25. 6. 07.

See sketch + formulae 19/5/05

Double strap, white, red, 19 $\frac{10}{16}$ inches
for $\frac{1}{2}$ off.

$\frac{1}{2}$ off 6 $\frac{1}{4}$ lbs single handle in strap
 $\frac{1}{2}$ off 4 $\frac{1}{2}$ lbs double handle in strap
 $\frac{1}{4}$ off under single double end strap
 $\frac{1}{4}$ off $\frac{1}{2}$ lbs under then plate.

SETTS, QUADRANT
TOP, HALL
1905



Thicknesses of shell plating to taper
from $\frac{3}{8}$ Length to ends in equal gradations

St David
Glas. rpt. no. 24351
St. Patrick
Glas. rpt. no. 24353

St. Andrew
Glasgow rpt. no. 26561

Revenue Section

870 & 871. 1382
J. Brown

W569-0116



© 2020

Lloyd's Register
Foundation