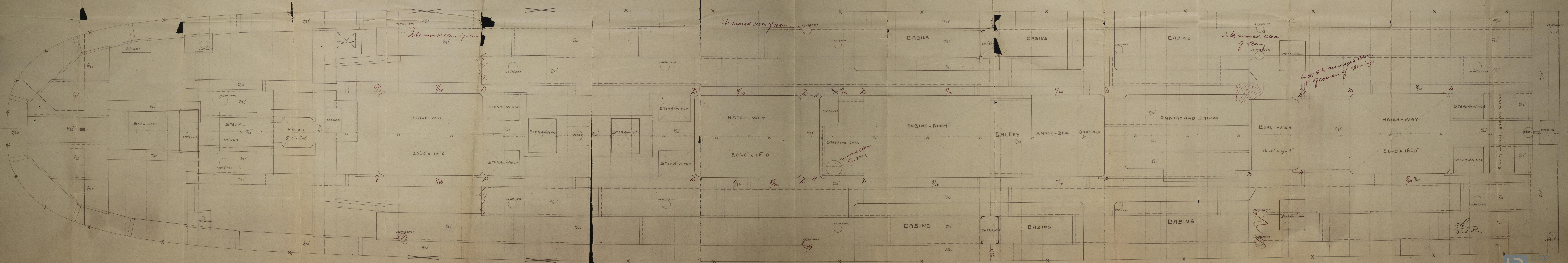
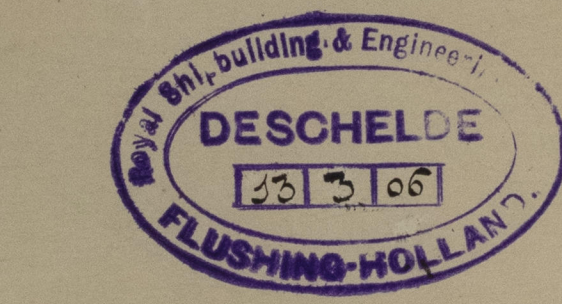


31-3-06

Boatling
 Stingerplate Quadruple and Treble riveted Buttlays
 Deckplating $\frac{1}{2}$ " for $\frac{1}{2}$ hr. amidships double riveted Buttlays
 for half hr. single at ends.
 Signlates double riveted Buttlays

S. S. "Sjirini" No 124.
 Deckplating of Poop and Bridgedeck.



Scale $\frac{1}{4}$ " = 1'-0"

31.3.06.

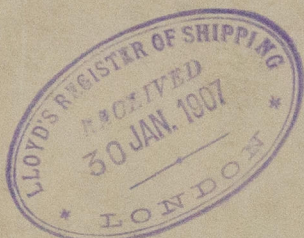
124

Brize bl

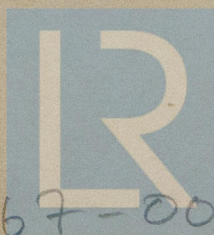
Brize bl.

Brize bl. report 5042.

P. P. Tjichini



RETAIN



© 2021

Lloyd's Register
Foundation

W567-0088

124

0' x 16'

CH-W

2 1/2"

2 1/2"

VENTILATOR

STEAM-WINCH

STEAM-WINCH

MHST

STEAM-WINCH

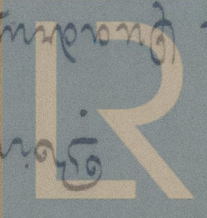
2 1/2"

VENTILATOR

2 1/2"

Stimulating 2 1/2" for 1/2 lb. ammonia and 2 lb. for half lb. single at end. Ventilates double ended Bottle Cays

Stimulating



Lloyd's Register Foundation