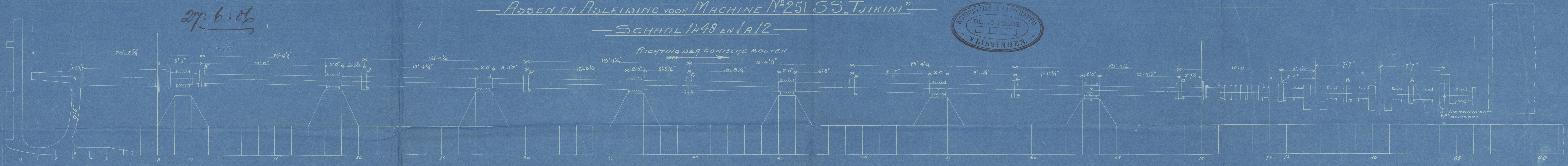


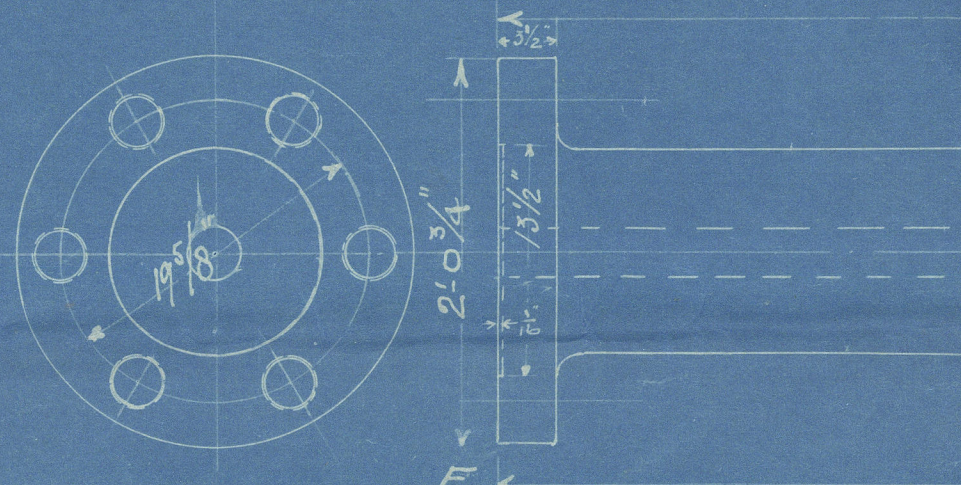
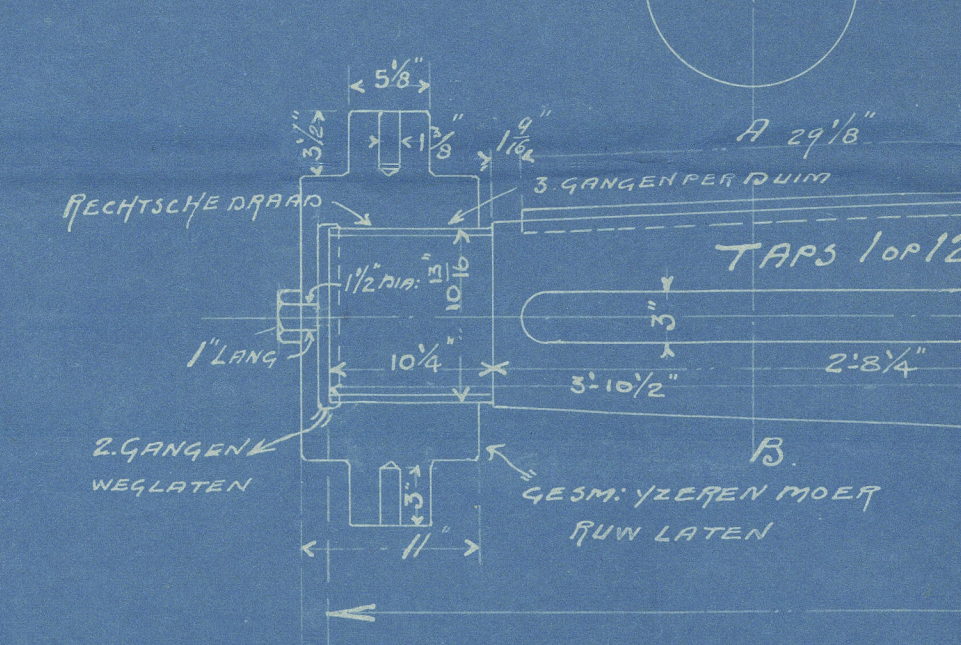
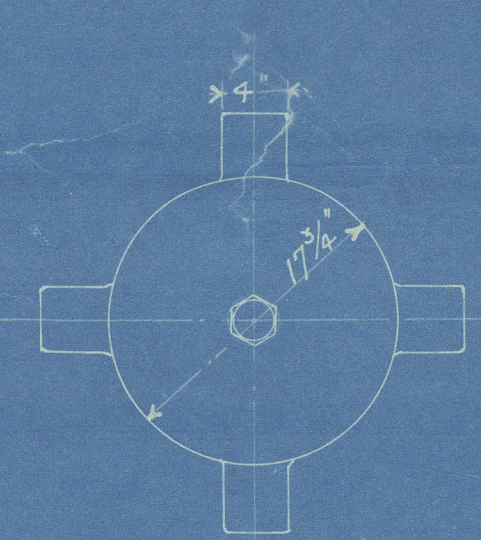
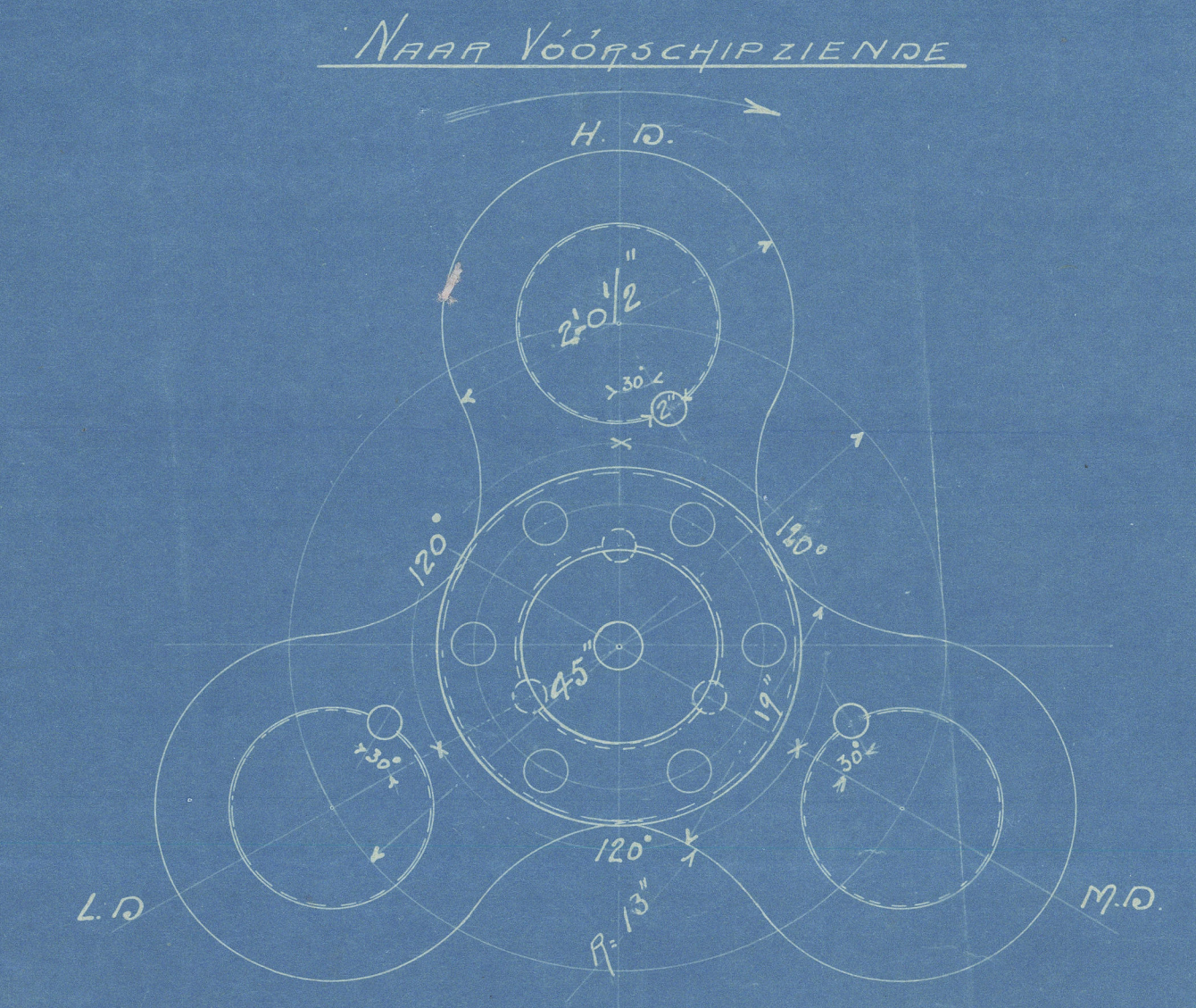
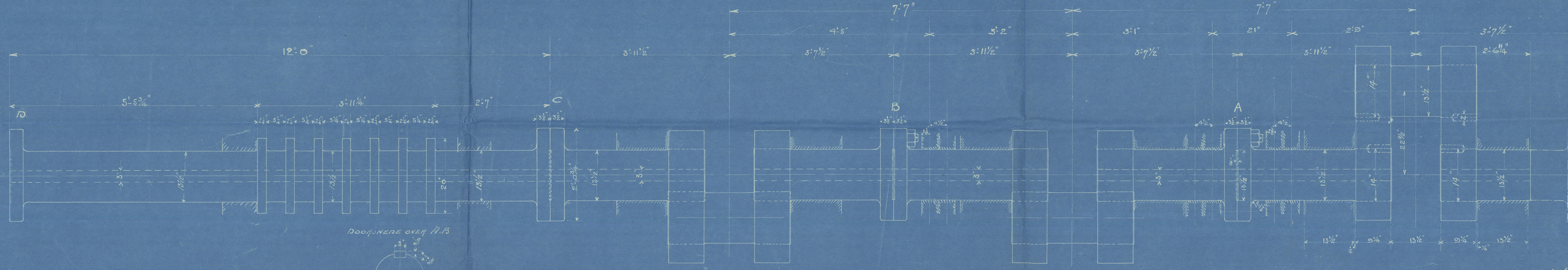
27.6.06

ASSEN EN AFLEIDING VOOR MACHINE N^o 251 SS. TJIKINI

SCHAAL 1/48 EN 1/12

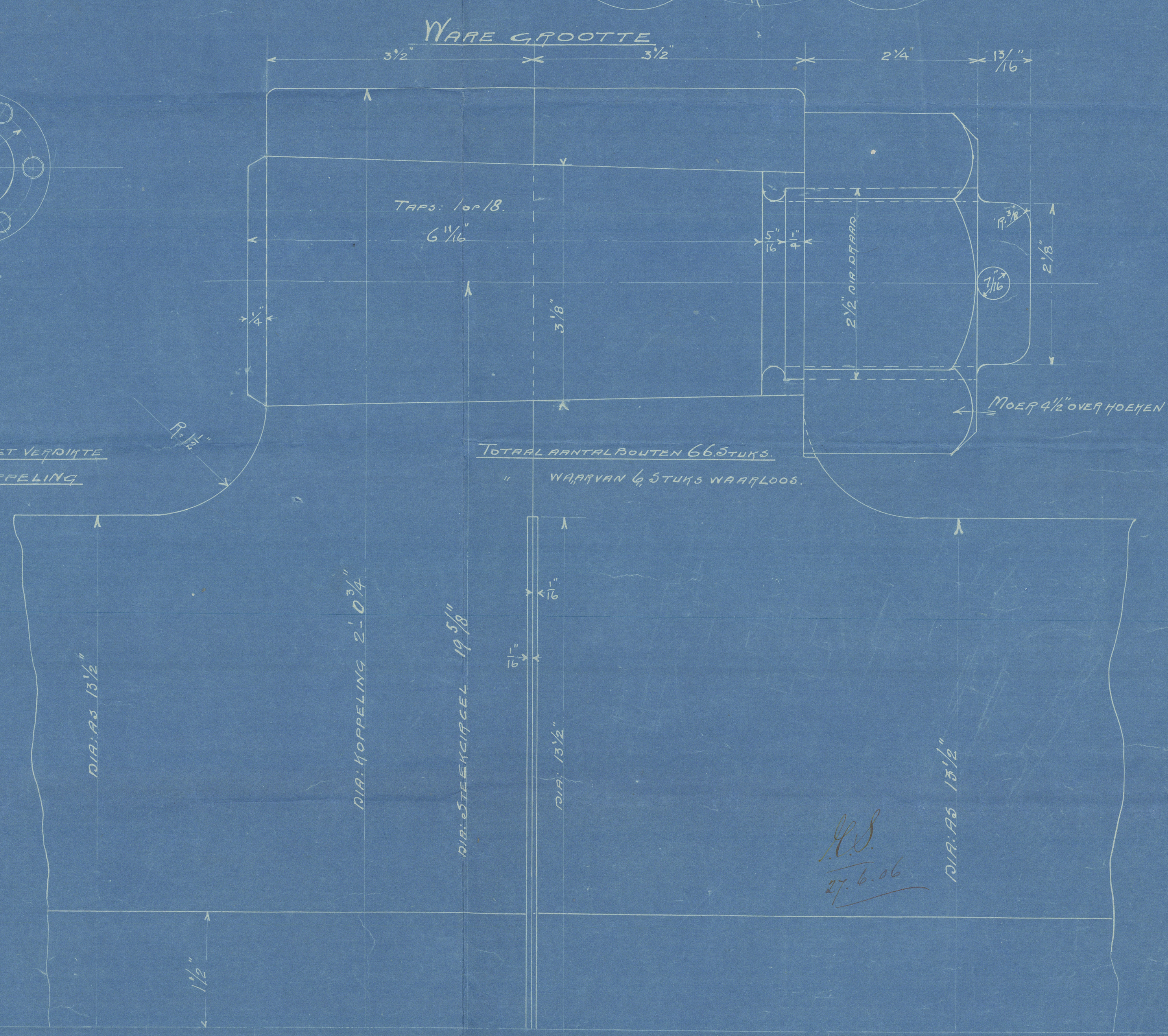


ALLE ASSEN VAN SIEMENS MARTIN'S STAAL



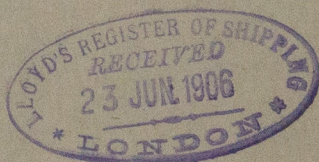
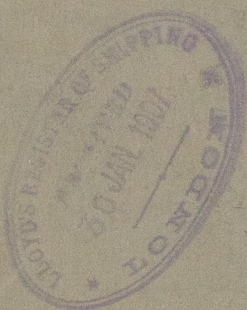
E	7'-11 3/4"	X	2'-0"	X	1.5 stuk 2'-4 1/2"	Y D
F	9'-4"	X	2'-0"	X	1.5 stuk 8'-0 3/4"	Y E
G	10'-0 1/4"	X	2'-0"	X	1.5 stuk 6'-8"	Y F
H	12'-0 1/2"	X	2'-0"	X	1.5 stuk 5'-3 3/4"	Y G
J	13'-4 3/4"	X	2'-0"	X	1.5 stuk 3'-11 1/2"	Y H
K	14'-0"	X	2'-0"	X	1.5 stuk 2'-7 1/4"	Y J

Principal Dimensions
 Dia. of cylinder 24 1/4", 40", 64"
 Stroke 45"
 Boiler pressure 180 lbs.
 Diameter of propeller 16'-6"



S.S. "Tjikini"
Shafting

Port of Rotterdam
Report No. 5072 ⁶



RETAIN



© 2021

Lloyd's Register

W567-005 Foundation